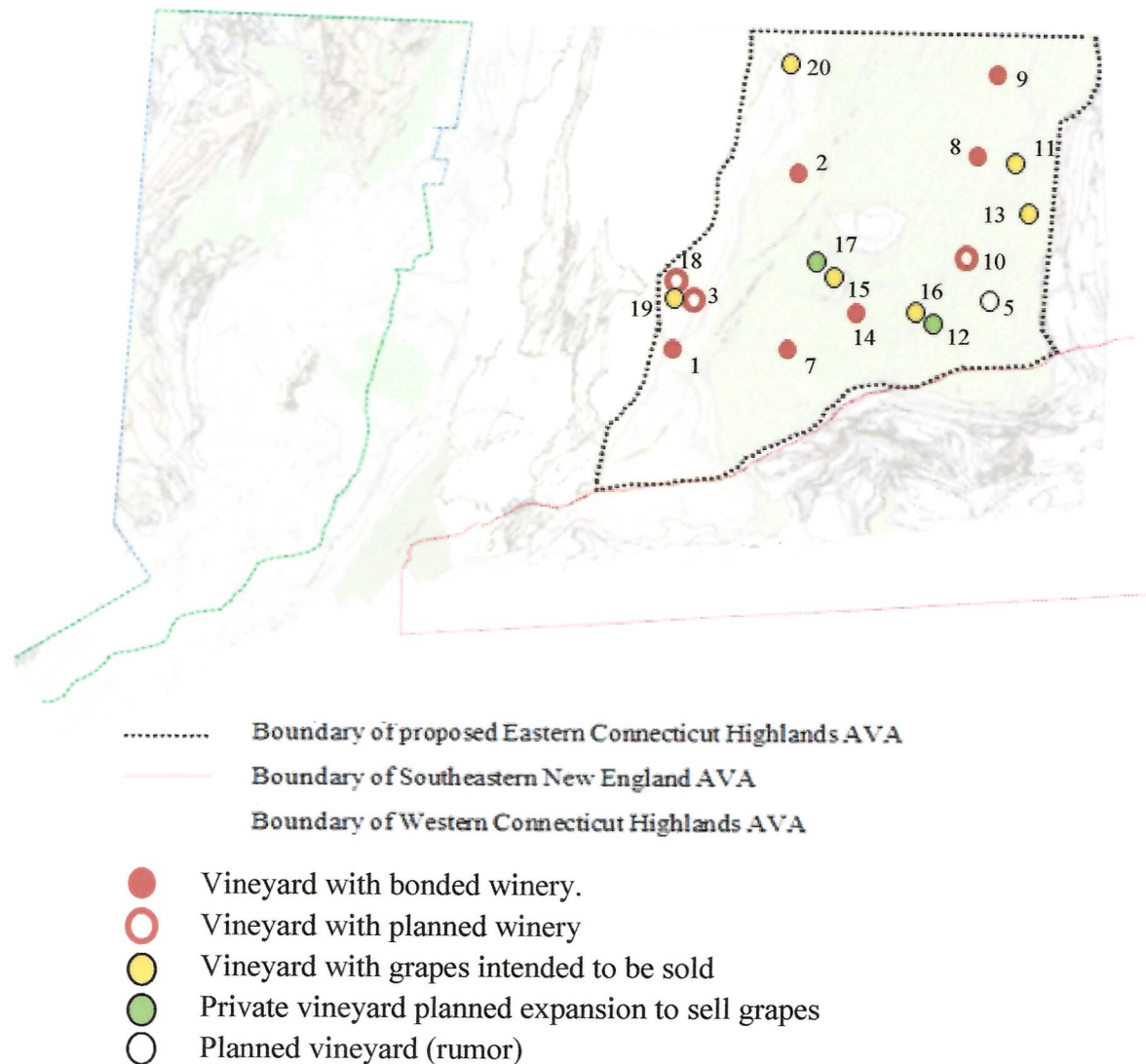


**Appendix 2.** Vineyards in proposed Eastern Connecticut Highlands AVA. Maps from GoogleEarth or Bing Maps; scale bar when included, = 500 ft unless otherwise noted.



**INDEX MAP.** Numbers refer to Appendix 1 Table 2 numbering system. Vineyard descriptions listed alphabetically

**TTB Note:** Preston Ridge Vineyard, which is included in the listings below as number 6, was inadvertently omitted from this map.

**Location of vineyards in proposed Eastern Connecticut Highlands AVA.**

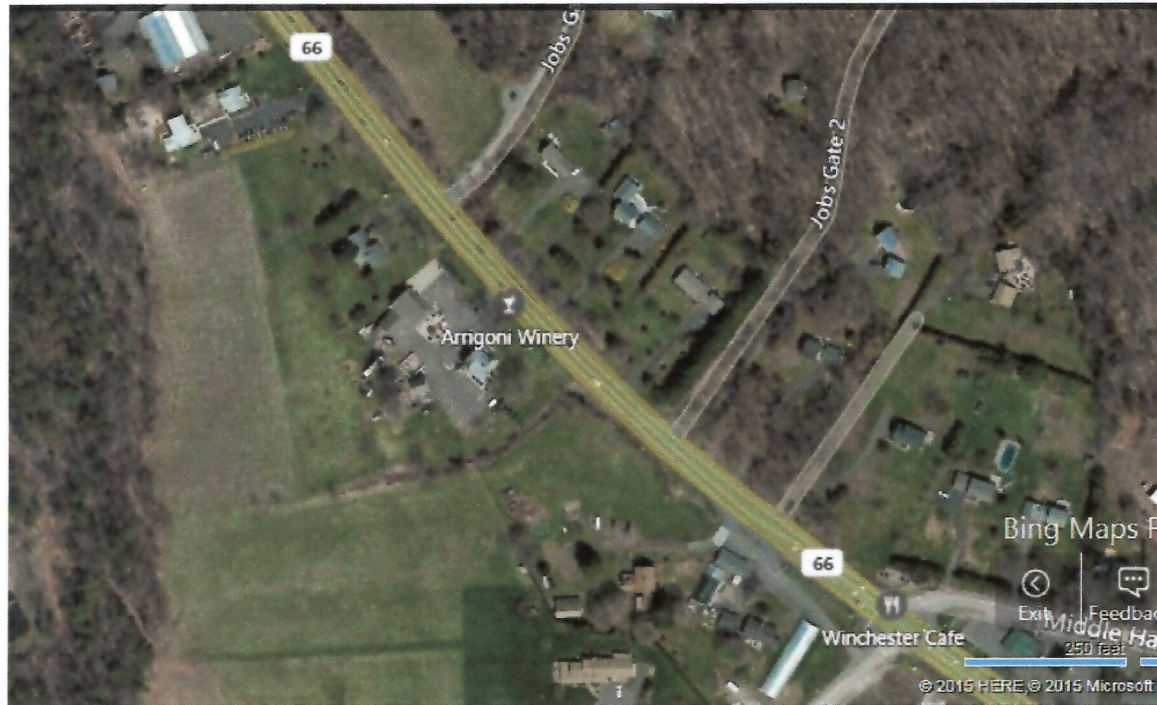
**Arrigoni Winery;**

Edward Manner owner.

1287 Portland-Cobalt Road

Portland, CT

Number 1 on map.



**Wines produced (2015).**

Red wines:

Brownstone

Ruby

Driftwood

Rosso

Chocolate Love

Grapes used

Cabernet franc

Merlot

?

Bacco noir, Catawba

C. franc, Merlot

White wines

Riverbend

Summer Daze

Sunset

Pearl

Grapes used

Cayuga

Chardonnay

Reisling, Traminette

Vidal blanc

Blush

Rozy

Cranberry Love

Pinot noir

?

**Varieties currently grown on estate:**

Vignoles

Frontenec

Frontenec gris

Chardonnay

Riesling

Vidal blanc

Baco noir



Vineyard behind winery on Rt. 66. (2 ac)



Part of new vineyard planted in 2014 on Sand Hill Road, eventually 4 ac. to be planted here.



## Arrow Head Acres

Mackenzie Beckwith, proprietor

519 Pond Road (Rte 207)      Mail: 700 Rte 32  
Franklin, CT 06254              Franklin, CT 06254

860-933-9311

Number 16 on map



Aerial photograph taken before vineyard was planted, starting in 2013. Expanded somewhat in 2016.

### Red Grapes planted

Baco Noir  
Chamborcin

### White grapes

Cayuga white  
Riesling  
Alpen Glow

### Table grapes

2 varieties



July, 2015



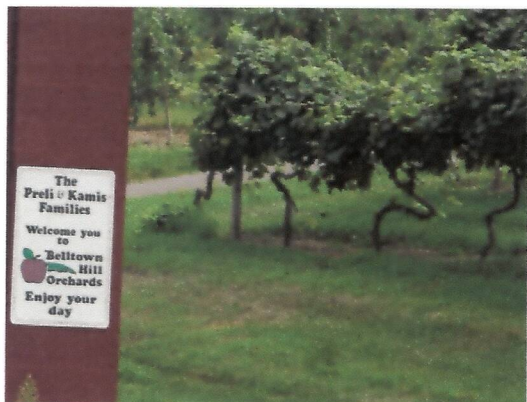
### **Belltown Hill Orchards**

468 Marston Hill Road (location of vineyard illustrated; additional vineyards may exist)

Glastonbury, CT

Preli-Kamis Families

Small vineyard likely growing concord grapes some of which are sold as table grapes and some of which will be sold to make wine. This company may have other vineyards in the area.





**Bergendahl Vineyard**  
18 Plains Road  
Franklin, CT  
Jean Bergendahl, owner.

Number 12 on map.



This is a small (0.5+ ac) plot has added new vines since picture and may be selling grapes in future.



Blackwells Brook Farm  
371 North Canterbury Road  
Canterbury, CT  
John Labossiere, owner  
860-546-9149

Number 13 on Map.

1 Acre plot; grapes sold. Varieties  
unknown.





Cassidy Hill; Robert Chipkin proprietor  
 454 Cassidy Hill Road  
 Coventry, CT 06238  
 860-498-1126  
[www.cassidyhill.com](http://www.cassidyhill.com)  
 Number 2 on map.



Red wines  
 Coventry Spice ?  
 Coventry Red \*\* ?  
 Jet's Red\*\* Merlot, Syrah, Malbec  
 Cabernet sauvignon C. sauvignon

White wines  
 Pinot grigio Pinot grigio  
 Reisling Reisling  
 Jet's White Vidal\*, Traminette\*  
 Coventry White\*\* ?  
 Summer Breeze Cayuga White  
 Catawba

Rosé  
 Chambourcin rosé Chambourcin\*

\*\*Website identified as wines made with estate grown grapes

\*Website identified variety grown on estate .

Estate planting: 10 acres; south and east facing

Cassidy Hill, (cont)

Grapes grown

Red

Chambourcin

St. Croix

Sabrevois

Frontenac

Catawba (?)

White

Cayuga blanc

Vidal

Vignoles

Traminette

Frontenac gris

Seyval blanc

LaCrescent





Chestnut Hill Vineyard  
410 Rte. 87  
Columbia, CT  
Garrett McDonald, Owner  
860-228-0230

Number 17 on map.

0.5 ac plot with grapes currently for private use.  
Planning to expand to a full acre and possibly to  
2 acres and sell extra grapes.





Crystal Ridge  
James Family  
257 Belltown Road  
Glastonbury, CT

Number 3 on Map

A tasting room is currently being constructed. Winery permit not yet issued (2015).



Red grapes

Landot noir,  
St. Croix,  
Dornfelder  
Cabernet franc

White Grapes

Vignoles,  
Riesling  
Pinot gris  
Chardonnay

Heritage Trail Vineyards  
291 North Burnham Highway  
Jewett City, CT 06351

Currently not in production. Rumor persists that by new owner will be replanting the vineyard.

Number 5 on map.

Joseph Preli Farm-Winery  
233 Hopewell Road  
Glastonbury, CT  
John Yushkevich and Jeanne Ellice, Proprietors  
860-633-7333  
[josephprelifarm@icloud.com](mailto:josephprelifarm@icloud.com)

Number 18 on map.

Preli Vineyard grows concord grapes that were already on the property when the family purchased the farm in 1920. A winery permit has been applied for from the State of Connecticut. They plan to make wine from Concord grapes (some of which they may have to purchase) and several fruits.





Lebanon Green Vineyards  
William and Sandy Landon  
589 Exeter Road  
Lebanon, 06249

860-642-7867; Don Joy, Gen. mgr 860-222-4644.

Number 14 on map.

Winery opened for tasting in August, 2015. Seeking to lease nearby land and expand plantings.



Red Grapes estate grown

St. Croix (1.5 ac)

Cabernet franc (0.5 ac)

Marquette

White estate grown grapes

Cayuga white (3 ac)

Traminette (0.75 ac)

Red wine

Red Blend

White wine

White blend



Preston Ridge Vineyard  
 Cara and Andrew Sawyer, owners  
 100 Miller Road  
 Preston, CT  
 860-383-4278  
[www.prestonridgevineyard.com](http://www.prestonridgevineyard.com)  
[Number 6 on map.](#)



**Wines produced:**

Red wines

Rock Ridge Red	Chambourcin, Marechal Foch
Cabernet franc	C. franc
Estate C. franc	C. franc*

Rosé

Zundell Farm Rosé\*\*

Sunset Farm Dry Rosé\*\*

White wines

Fieldstone white	Cayuga
Estate Vidal blanc	Vidal blanc*
Chardonnay	Chardonnay (Long Isl)
Reserve	Chardonnay
Estate Chard.	Chardonnay*

\*\*Made from primarily estate grown grapes

\*Identified as estate grown variety



Preston Ridge (cont)

**Estate grown varieties** (listed on website)

Chardonnay, Cabernet franc, Riesling, Triamenette, Vidal blanc, Baco noir.



Lower vineyard



Preston Ridge (cont)



Lower vineyard

Priam Vineyards  
11 Shailor Hill Road  
Colchester, CT 06415  
860-267-8520  
[www.priam-vineyards.com/](http://www.priam-vineyards.com/)  
Number 7 on map.



**Wines produced:**

Red wines

Winchester Red  
Salmon River Red  
St. Croix                      St. Croix  
Essence of St. Croix      St. Croix

White wines

Jeremy River White  
Salmon River White  
Riesling  
Late Harvest Riesling  
Chardonnay  
Barrel Select Chardonnay

Riesling +?  
Chardonnay +?  
Riesling  
Riesling  
Chardonnay  
Chardonnay



Rosé

Blackledge Rosé

St. Croix

Gewurztraminer

Late Harvest Gewurztraminer

Gewurztraminer

Gewurztraminer

**Estate grown varieties:**

St. Croix (6 ac)

Cabernet franc (1 ac)

Muscat (1 ac)

Chardonnay (4 ac)

Riesling (6 ac)

Gewurtztraminer (2 ac)



Vineyard on upper part of hill near residence. Note wide spacing between rows.



Sharpe Hill Vineyard  
 Stephen and Catherine Vollweiller, proprietors  
 108 Wade Road  
 Pomfret, CT 06258  
 860-974-3549  
[www.sharpehill.com](http://www.sharpehill.com)  
 Number 8 on map.



#### Red Wines

St. Croix	St. Croix*
Red Seraph	C. franc, St. Croix
Cabernet franc	C. franc*
Fleur Rouge	Blend
Pontefract	St. Croix*

#### Rosé

Dry Summer Rosé	St. Croix
Angelica Rosé	?

#### White wines

Ballet of Angels	Blend
Am. Chardonnay	Chardonnay
Reserve Chardonnay	Chardonnay*, Melon*
Cuvee Ammi Phillips	Chardonnay (Long Is)
Dry Riesling	Riesling
Riesling	Riesling*
Select Late Harvest	Vingnoles*

- Advertised as estate grown grapes.

Sugar Creek Vineyard  
Robert Dwyer, Owner  
20 Wheelock Road  
Ellington, CT  
860-690-0063  
[bob@cutterenterprises.com](mailto:bob@cutterenterprises.com)  
Number 20 on map

**Estate grown vines:**

Red

Dorenfelder  
Landot noir  
Cabernet franc  
Pinot noir

White

Chardonnay  
Vidal blanc  
Riesling



Existing 0.5 acre (8/10/15)



Part of 7 acres in background that is being prepared for planting in spring 2016.



Tabor Vineyard

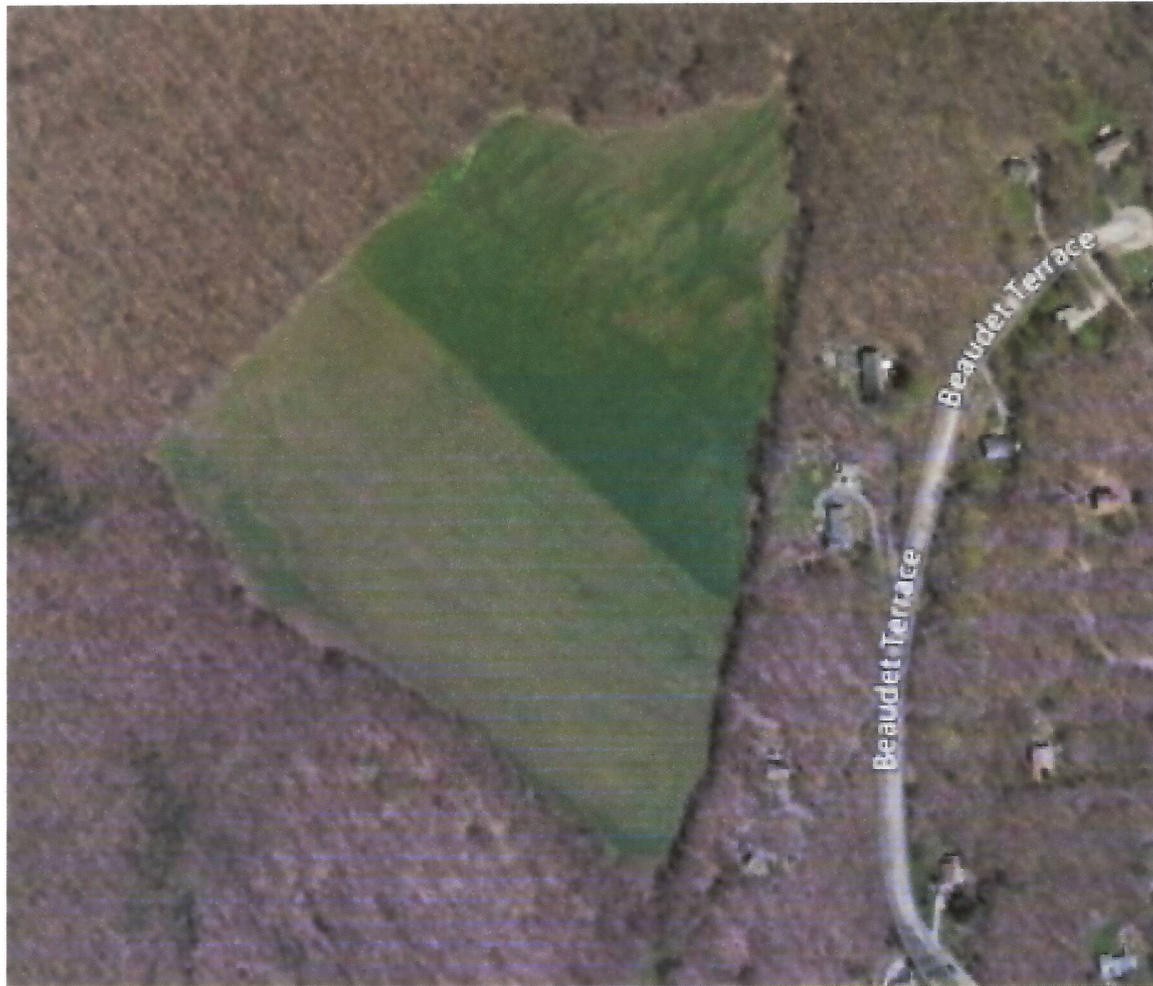
544 Rte. 87

Columbia, CT

Walter and Nancy Tabor, owners.

Address above for residence. Vineyard located on adjacent property owned by Tabors.

Number 16 on map.



Taylor Brooke Winery  
 848 Route 171  
 Woodstock, CT 06281  
 860-974-1263  
[www.taylorbrookewinery.com](http://www.taylorbrookewinery.com)  
 Number 9 on map.



Since this photo was made, land has been cleared and planted south and east of the parking lot.

#### Red wines

Corot noir	Corot noir
Roseland Red	C. sauvignon, Merlot
	St. Croix
Woodstock Valley	St. Croix*
Red	

#### Rosé

St. Croix Rosé	St. Croix
----------------	-----------

#### White wines

Autumn Raspberry	Riesling
Cranberry Riesling	Riesling
Green Apple Riesling	Riesling
Riesling	Riesling
Summer Peach	Riesling
Traminette	Traminette
Wine Dog #1	Cayuga*
Woodstock Hill White Blend	



Vineyard at Fox Run Farm  
John Cordes, Owner  
580 Pomfret Road  
Brooklyn, CT 06230  
860-779-0230  
Number 11 on map.



Fox Run sells grapes to wine-makers and does not make wine commercially.

Estate grown vines:

Red:

St. Croix (2 ac)

White

Vignoles (2/3 ac)

Trammenette (2/3 ac)

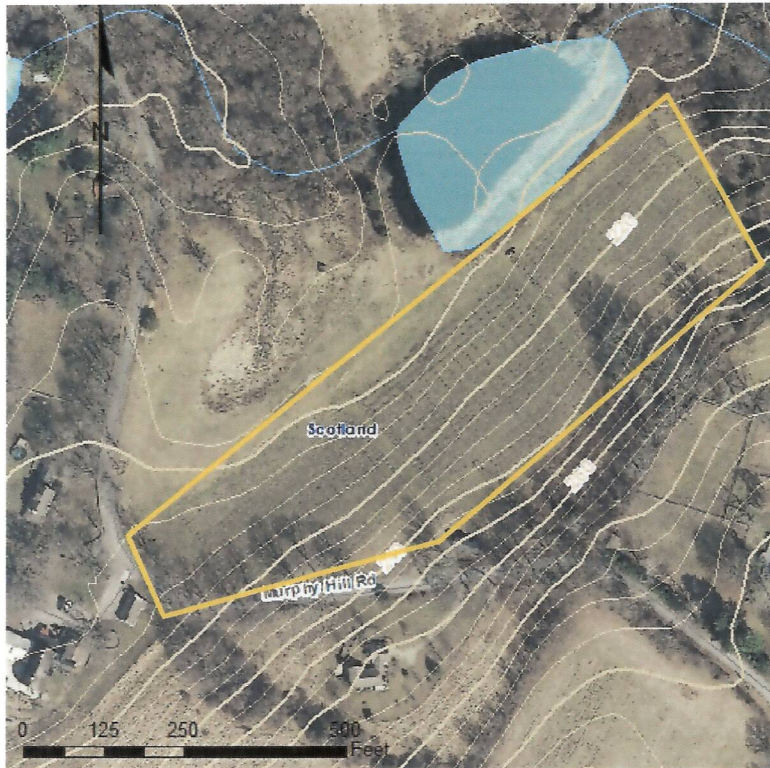
Frontanec gris (2/3 ac)



Vineyard at Hillyland  
75 Murphy Hill Road  
Scotland, CT  
Douglas Stearns, owner.

mailing address:

51 Murphy Hill Road  
Windham, CT 06280



About 4.5 acres are currently in production. More acreage is available and a hilltop vineyard may be planted in near future. Grapes have been sold in the past, but application for a winery license is in process and they plan to open a tasting room.