



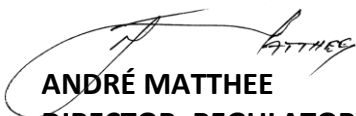
INFORMATION & CALL FOR COMMENTS

PROPOSED NEW DEMARCATIONS

The Wine and Spirit Board has published the following proposed new demarcations in the *Government Gazette* and various newspapers for objections:

1. **Vlottenburg** as a new ward. See the attached application notice and ANNEXES A1 to A4, showing a satellite view, geology, soil and topography respectively.
2. **Helderberg-Stellenbosch** as a new ward. See the attached application notice and ANNEXES B1 to B4.

If you have any comments or objections in this regard please submit same in writing to the board's secretary, Olivia Poonah, at olivia@wsb.org.za, to reach her before 5 March 2020. If you have any queries please feel free to contact Olivia at +27 (0)21 889 6555.



ANDRÉ MATTHEE

DIRECTOR: REGULATORY SERVICES

WINE AND SPIRIT BOARD

Tel: +27 83 444 6963 **Email:** matthee@wo.org.za

Disclaimer: This document has been prepared primarily for the general information of the South African wine industry and does not represent any form of legal advice. Accordingly, readers should not rely on the comments contained herein, whether express or implied, and should consult the legislation concerned and obtain specific advice on these matters from their own legal advisers. Writer or his employer does not accept responsibility for the accuracy or completeness of any recommendations, comments, information or advice contained herein, and will not be held liable for any loss or damage that may arise as a result of the use of the information.

WINE LAW is a publication of:

THE WINE AND SPIRIT BOARD

WINE OF ORIGIN (WO) · INTEGRATED PRODUCTION OF WINE (IPW) · ESTATE BRANDY

**NOTICE OF APPLICATION FOR THE DEFINING OF A PRODUCTION AREA
VLOTTENBURG (WARD)**

(In terms of Section 6 of the Wine of Origin Scheme published by Government Notice No. R.1434 of 29 June 1990)

Please take note that Vloottenburg Boerdery (Edms) Bpk applied to the Wine and Spirit Board to define Vloottenburg (Ward) as a production area to produce Wine of Origin.

Definition of proposed ward boundary

The proposed Vloottenburg Ward (Fig. 1) boundary starts on the Polkadraai Road where it crosses the Sanddrif River and then moves in a westerly direction along the Polkadraai Road to right against the Polkadraai Hills Ward just past Skilpadvlei. From there the boundary runs south- and then westwards along the existing outer boundary of the Polkadraai Hills Ward, to where it crosses the Vlaeberg River. From there the boundary follows the Vlaeberg River in a general southerly direction to where it joins the Eerste River. From there, upstream with the Eerste River in a north-easterly direction to where the Sanddrif River flows into the Eerste River right against the Vloottenburg farm. From there, in a general northerly direction up along the Sanddrif River to where it rejoins the starting point mentioned above.

Geology

The proposed ward consists of well weathered granite soils (N-Ck, coloured red in Fig. 2), with large parts of the soils of binary origin, with younger, sandy Table Mountain Sandstone material overlying the primary rocks (Qgg, coloured yellow in Fig. 2), often with ferricrete ('ouklip'/laterite concretions or banks) on the contact zone.

Topography

The proposed Vloottenburg Ward can be considered a natural unit with a generally convex hill landscape and abundant cooler southern slopes. It mostly drains southwards to the Eerste River (Fig. 1; Fig. 3).

The proposed boundaries can be viewed at www.sawis.co.za – "Certification – News and Information" or contact Jackie Cupido at 021-807 5704.

Anyone having any objection against this application is hereby notified to lodge their objections, with motivations, in writing with Olivia Poonah (olivia@wsb.org.za), The Secretary, Wine and Spirit Board, P O Box 2176, Dennesig, Stellenbosch, 7599 within 30 (thirty) days of publication of this notice.

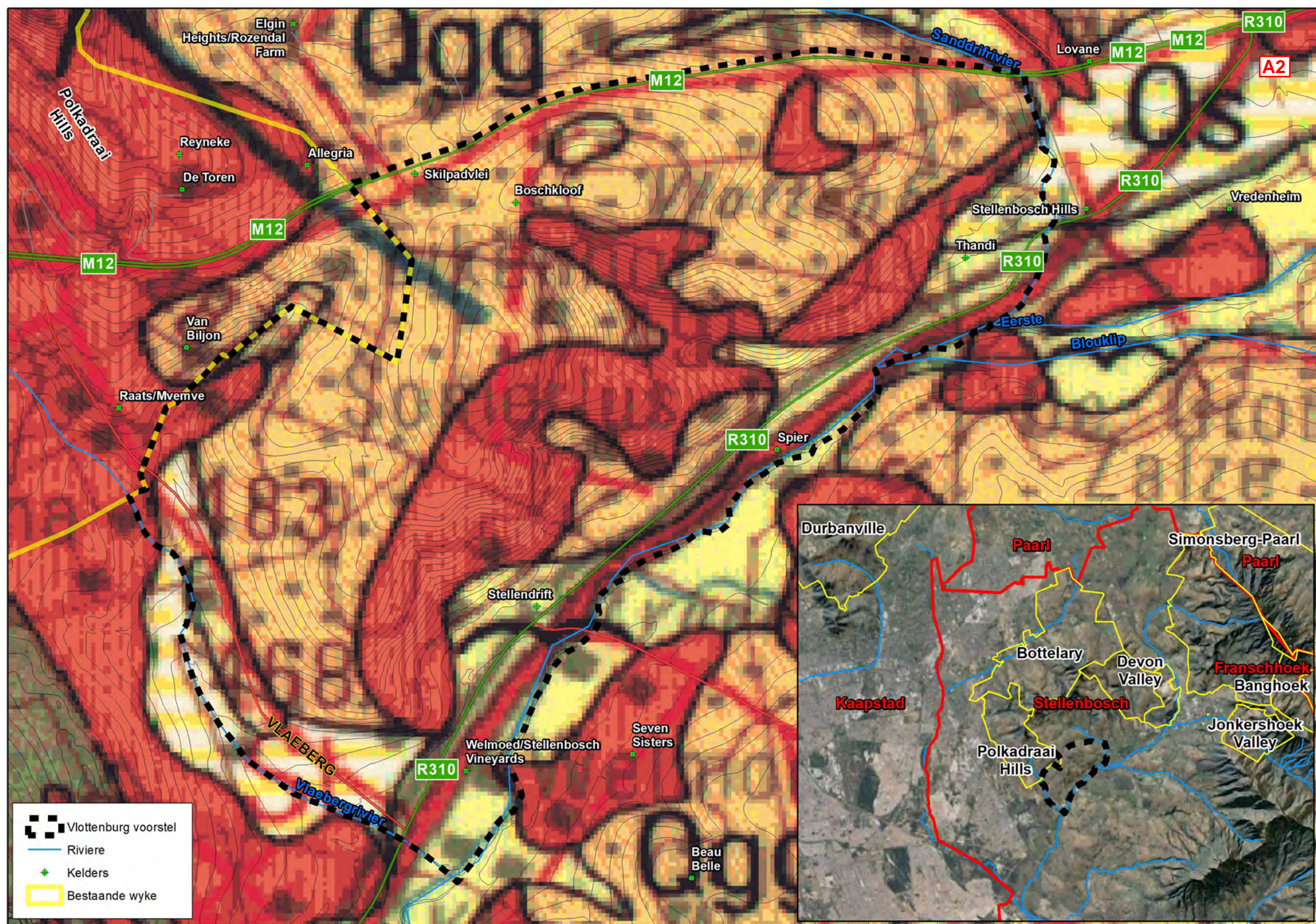


A1

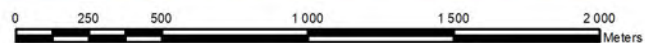
R310

Google Earth

© 2018 AfriGIS (Pty) Ltd.
Image © 2019 Maxar Technologies



Vlotenburg



Coordinate System: GCS WGS 1984WGS 1984

C:\Projekte\Afbakenings\Vlotenburg\Vlotenburg.mxd

Map compiled by Heinrich Schloms
Date: 2019/11/07
heinrich@vinpro.co.za
083 480 2686



VINPRO
growing together

Viottenburg voorstel

Riviere

Kelders

Bestaande wyke

Tipe, beskrywing

A(G), Vlak residuele gronde (Brak dupeks en alluviale leemgronde)

A, Vlak residuele gronde

B(A), Rooi en geel apedale gronde (Vlak residuele gronde)

B, Rooi en geel apedale gronde

D(G), Matig-diep nat dupeks gronde (Brak dupeks en alluviale leemgronde)

D, Matig-diep nat dupeks gronde

Dv, Vlak nat dupeks gronde

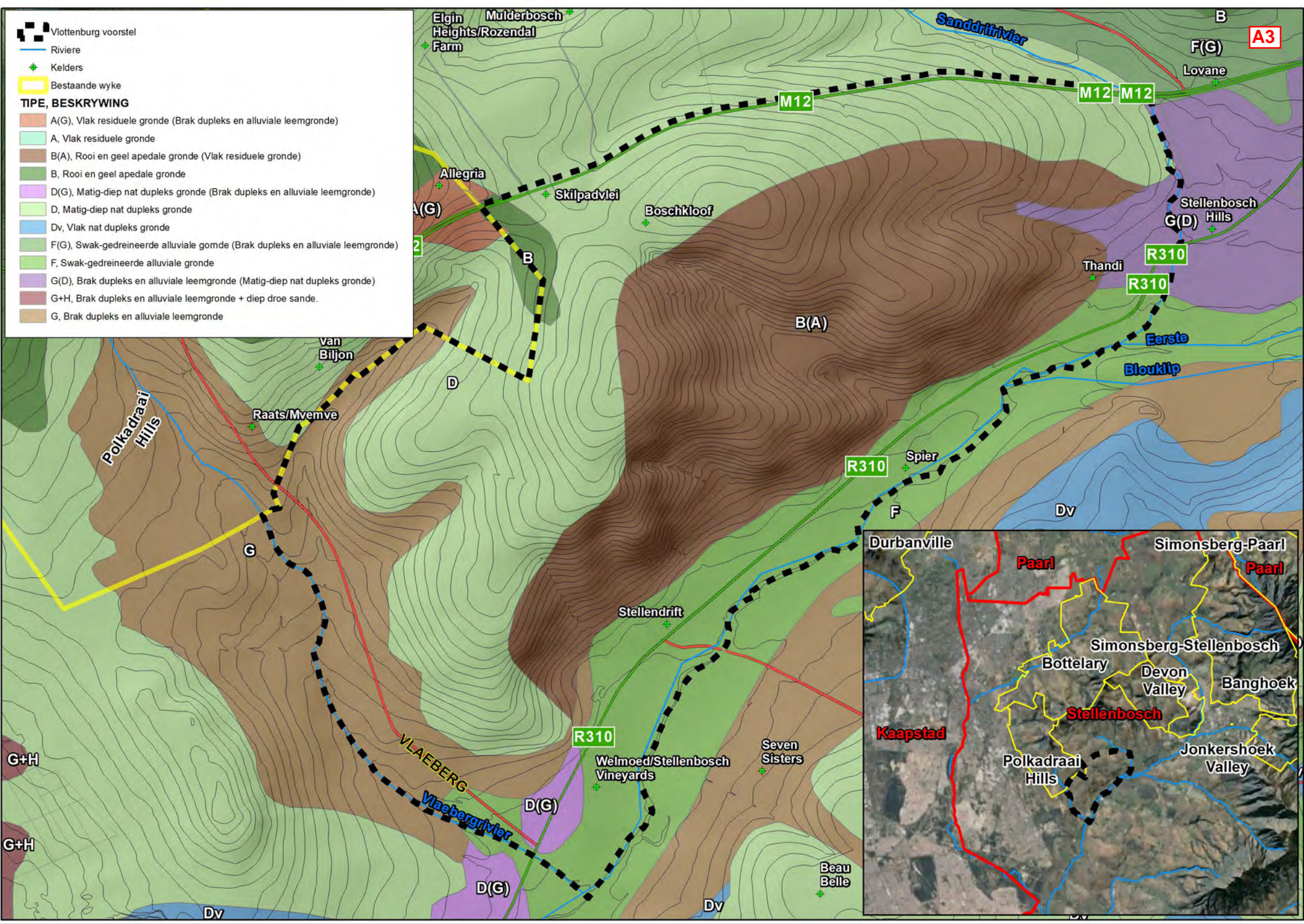
F(G), Swak-gedreineerde alluviale gomde (Brak dupeks en alluviale leemgronde)

F, Swak-gedreineerde alluviale gronde

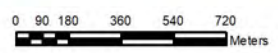
G(D), Brak dupeks en alluviale leemgronde (Matig-diep nat dupeks gronde)

G+H, Brak dupeks en alluviale leemgronde + diep droe sande.

G, Brak dupeks en alluviale leemgronde



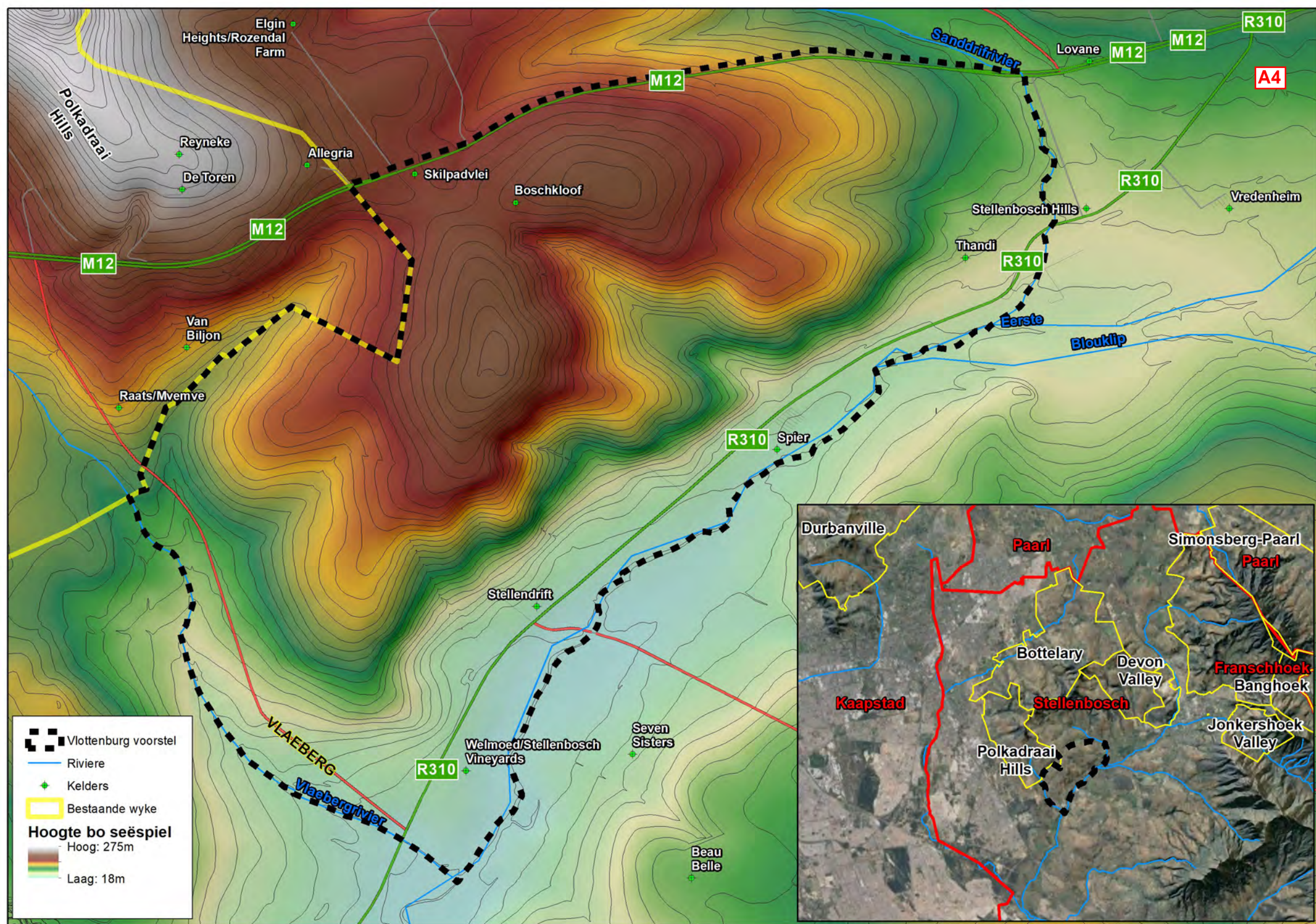
Vlottenburg Grondassosiasies



Coordinate System: GCS WGS 1984WGS 1984

Map compiled by Heinrich Schloms
 Date: 2019/11/07
 heinrich@vinpro.co.za
 083 480 2686





Vlottenburg

0 250 500 1 000 1 500 2 000 Meters

Coordinate System: GCS WGS 1984WGS 1984

Map compiled by Heinrich Schloms
Date: 2019/11/07
heinrich@vinpro.co.za
083 480 2686



VINPRO
growing together

**NOTICE OF APPLICATION FOR THE DEFINING OF A PRODUCTION AREA
HELDERBERG-STELLENBOSCH (WARD)**

(In terms of Section 6 of the Wine of Origin Scheme published by Government Notice No. R.1434 of 29 June 1990)

Please take note that Uva Mira Vineyards (Pty) Ltd applied to the Wine and Spirit Board to define Helderberg-Stellenbosch (Ward) as a production area to produce Wine of Origin.

Definition of the proposed ward boundary

The proposed Helderberg-Stellenbosch Ward (Fig.1) boundary starts in the neck between Stellenbosch Mountain and Helderberg Mountain at Grootnek (529 m) and the upper reaches of the Blouklip River. From here it runs along the course of the Blouklip River downwards in a northerly and westerly direction until it reaches the R44, and excludes Jamestown and other non-agricultural areas. It further follows the R44 generally southwards to right against the residential area of Bel Aire and from there the north-south watershed up along Helderberg to right against the peak. It then follows the peak (watershed) of the mountain in a north-easterly direction to where it rejoins the neck that separates Helderberg and Stellenbosch Mountain, the starting point mentioned above.

Geology

The proposed ward consists mainly of well weathered granite (N-Ck) and greywacke soils (Nf) (Fig. 2). Some of the soils are of binary origin with younger, sandy Table Mountain Sandstone overlying the primary rocks. (Qgg)

Aspect

The proposed Helderberg-Stellenbosch Ward mostly face (29.3%) in a north-westerly direction (pink sections; Fig. 3), which means that these slopes receive more solar radiation than the south-east facing slopes of the mountain. Approximately 71% of the proposed ward's aspects lie between north and west, which contrasts greatly with the south and south-east facing slopes of the Helderberg.

The proposed boundaries can be viewed at www.sawis.co.za – "Certification – News and Information" or contact Jackie Cupido at 021-807 5704.

Anyone having any objection against this application is hereby notified to lodge their objections, with motivations, in writing with Olivia Poonah (olivia@wsb.org.za), The Secretary, Wine and Spirit Board, P O Box 2176, Dennesig, Stellenbosch, 7599 within 30 (thirty) days of publication of this notice.

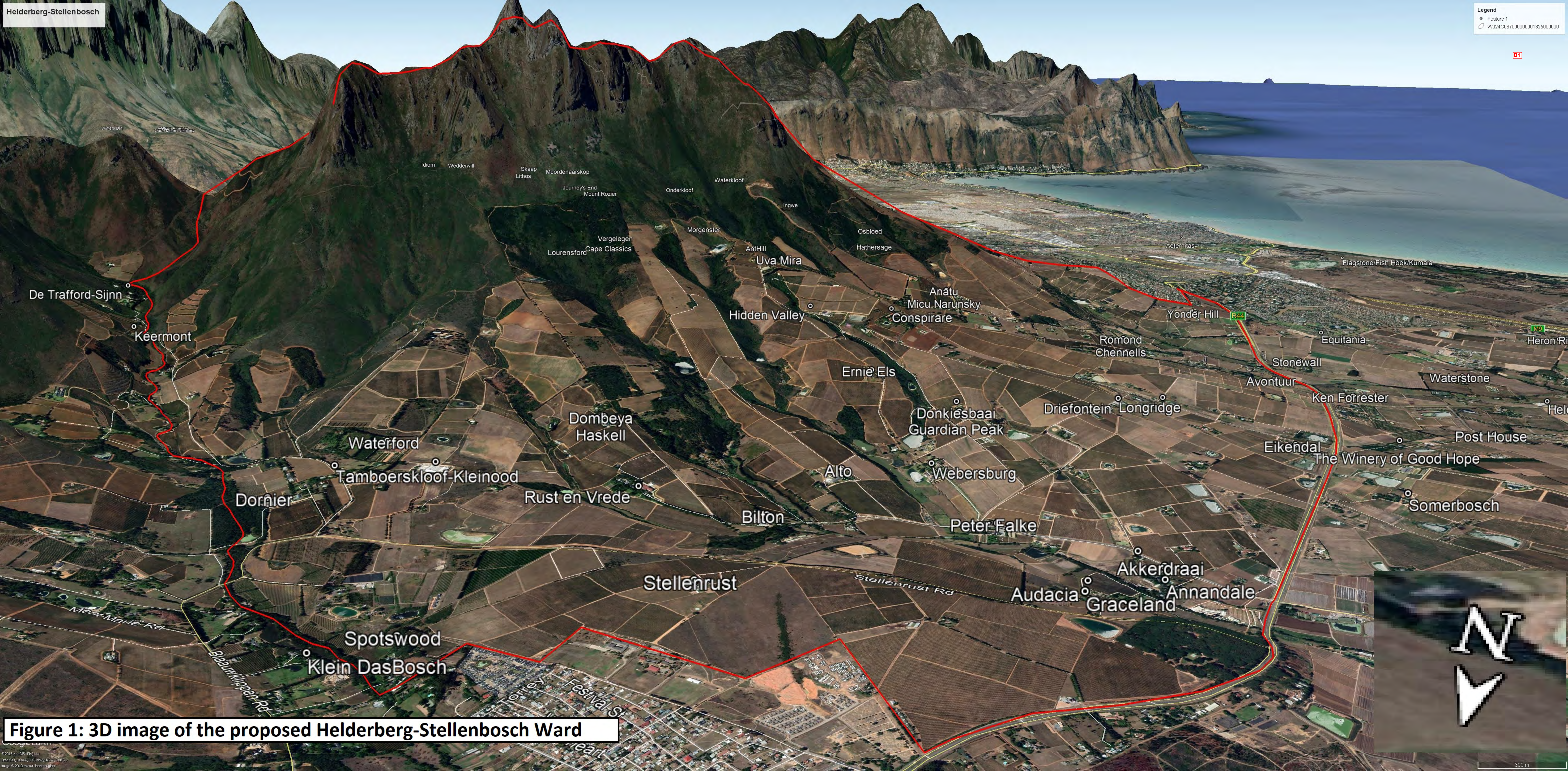
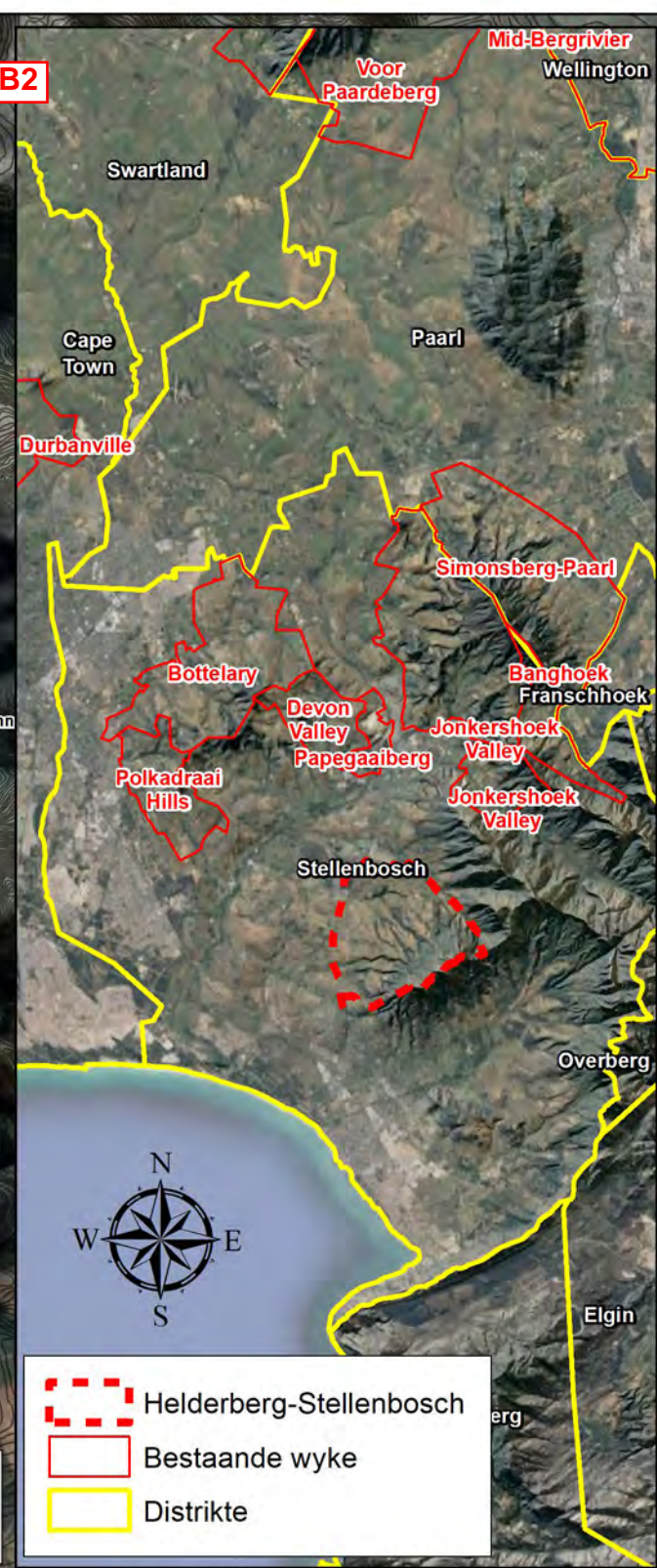
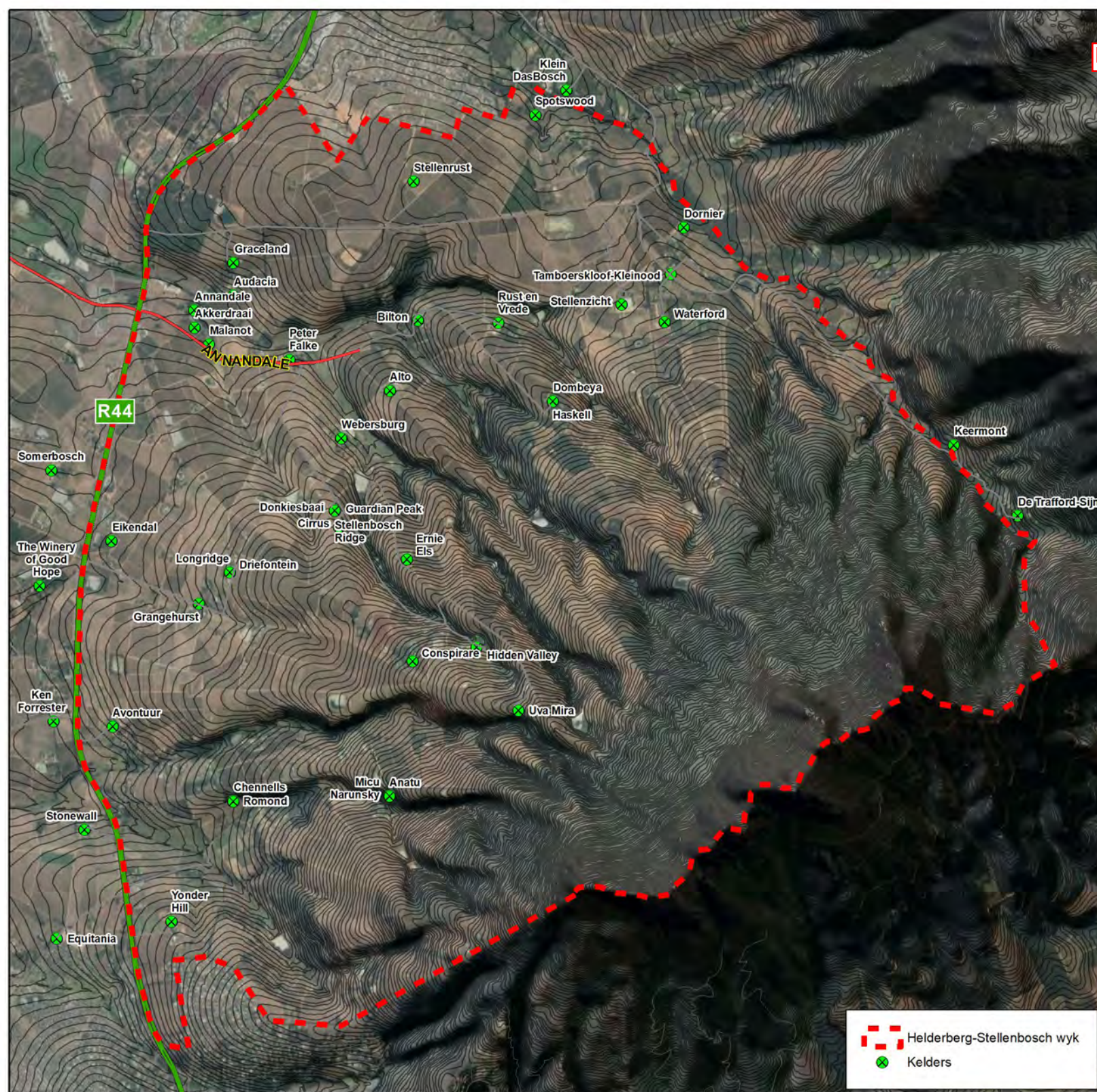


Figure 1: 3D image of the proposed Helderberg-Stellenbosch Ward



Helderberg-Stellenbosch wyk

0 0.15 0.3 0.6 0.9 1.2
Kilometers

Coordinate System: WGS 1984 UTM Zone 34S
Projection: Transverse Mercator WGS 1984

C:\Projekte\Afbakenings\Afbakenings\Helderberg\Helderberg.mxd

Map compiled by Heinrich Schloms
Date: 2019/11/07
heinrich@vinpro.co.za
083 480 2686



VINPRO
growing together

