



Wines of
**South
Africa**

welcome to our world of discovery



/WOSAUS



@WOSA_USA



@WOSA_USA

#drinkSA

Wine Grapes as a % of total vineyard area

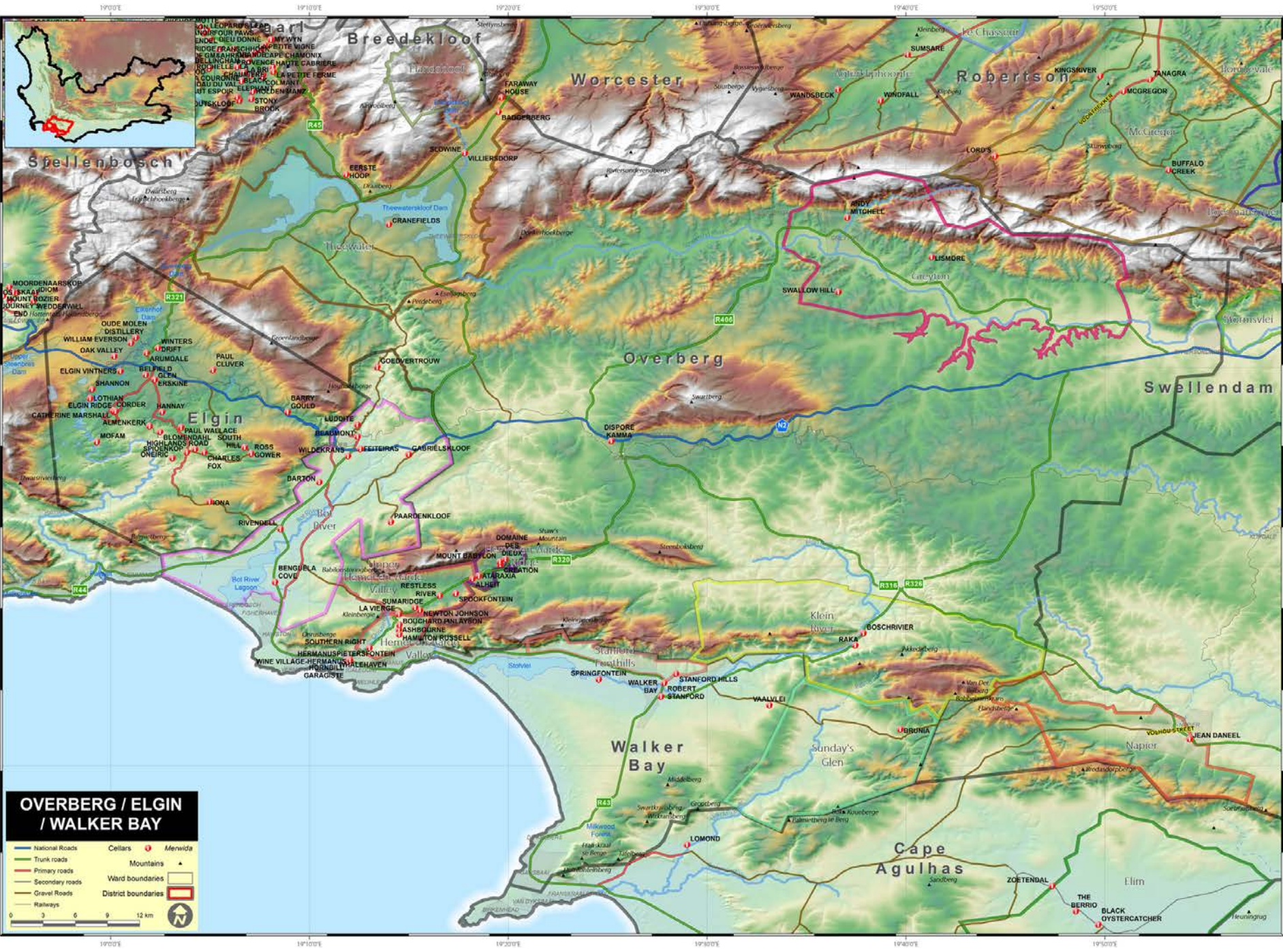
Chenin Blanc	18.5%
Colombard	12%
Sauvignon Blanc	9.7%
Chardonnay	7.2%
Others: (Muscat, Semillon, Viognier, Grenache Blanc, Bukettraube...)	
Total White:	54.6%
Cabernet Sauvignon	11.1%
Shiraz	10.4%
Pinotage	7.4%
Merlot	5.8%
Others: (Cinsault, Pinot Noir, Cabernet Franc, Grenache, Mourvedre...)	
Total Red:	45.4%



The most Chenin Blanc plantings in the world



Wine of Origin Districts



**OVERBERG / ELGIN
/ WALKER BAY**

National Roads	Cellars	Merwede
Trunk roads	Mountains	
Primary roads	Ward boundaries	
Secondary roads	District boundaries	
Gravel Roads		
Railways		

0 3 6 9 12 km



Bot River



Beaumont Chenin Blanc 2016

9-24 year-old vines

6-8 tons/ha

Concrete and Stainless Steel





Wines of Origin

Regions, Districts, Wards, Estates and Single Vineyards



2007

Vintage

SHIRAZ · VIOGNIER

Variety

PRIVATE CELLAR, FRANSCHHOEK VALLEY
SOUTH AFRICA

Origin



Wine of Origin Districts

Momento Chenin Blanc-Verdelho 2015

91% old vine Chenin
Blanc, aged
oxidatively in old
400L barrels for 10
months



9% Verdelho (Bot
River; 12 year old
vines), fermented
with 7 days of skin
contact





Swartland

Painted Wolf 'The Den' Chenin Blanc 2016

Mostly Swartland (labeled Coastal Region)

Yield 4 tons/acre

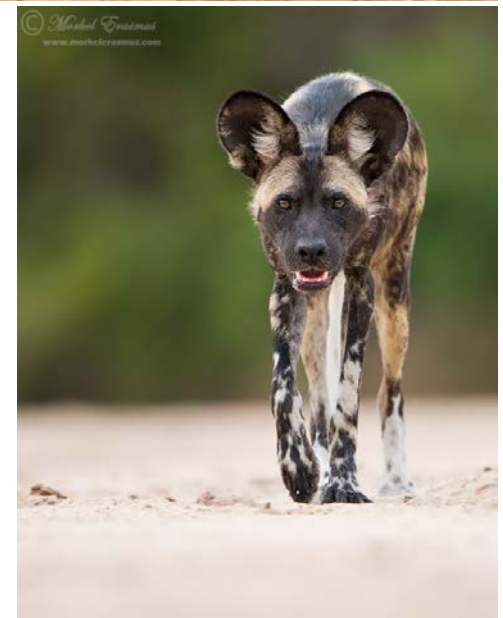
Mixed of irrigated and dry farmed

20-40 year-old vines

30% fermented in oak; 11 months in barrel/tank

Fermented at 15 C then dropped to 8 C for slow ferment with glycerol development

1800 cases made



**INTEGRITY &
SUSTAINABILITY**

Certified

WINE AND SPIRIT BOARD
www.swsa.co.za

**4477
796701**

Sustainability seal



Biodiversity & Wine Initiative (BWI)



Cape Floral Kingdom – over 10 000 plant species



Wine of Origin Districts



SWARTLAND

- National Roads
- Trunk roads
- Primary roads
- Secondary roads
- Gravel Roads
- Railways
- Cellars
- Merwida
- ▲ Mountains
- District boundaries
- Ward boundaries



Mullineux White 2015



*Chris Mullineux, Anajit Singh,
& Andrea Mullineux*

74% Chenin Blanc

12% Clairette Blanche

6% Viognier

4% Semillon Gris

4% Grenache Blanc

Indigenous Yeast, MLF,
8 –week fermentation

11 months in barrels &
1 2000L foudre (20%
new)



From 7 different parcels:

Kasteelberg: 36-year-old Chenin Blanc and 7-year-old Grenache Blanc (shale and schist)

Paardeberg: 2 parcels dry-farmed bushvine Chenin Blanc (40-65 years), 1 parcel 40-year-old Clairette , 1 parcel 56-year-old Semillon Gris (granite)

West of Malmesbury: 17-year-old Viognier (iron-rich soils)



SWARTLAND INDEPENDENT PRODUCERS: 25 Members

80% of production under own label; “natural” – no nutrients, fining, inoculations, etc.; uses representative varieties; no more than 25% new wood (and no non-European wood); burgundy bottles

CHENIN BLANC: VINE AGE

< 4 YEARS	1,685
4-10 YEARS	4,678
11-15 YEARS	3,600
15-20 YEARS	1,579
21-34 YEARS	5,166
35+	998



OLD VINES PROJECT

IAMOLD.CO.ZA



Rosa Kruger

35+ YEARS OLD

998 HA CHENIN
BLANC

189 HA PINOTAGE

179 HA CINSAULT

168 HA MUSCAT
D'ALEXANDRIA

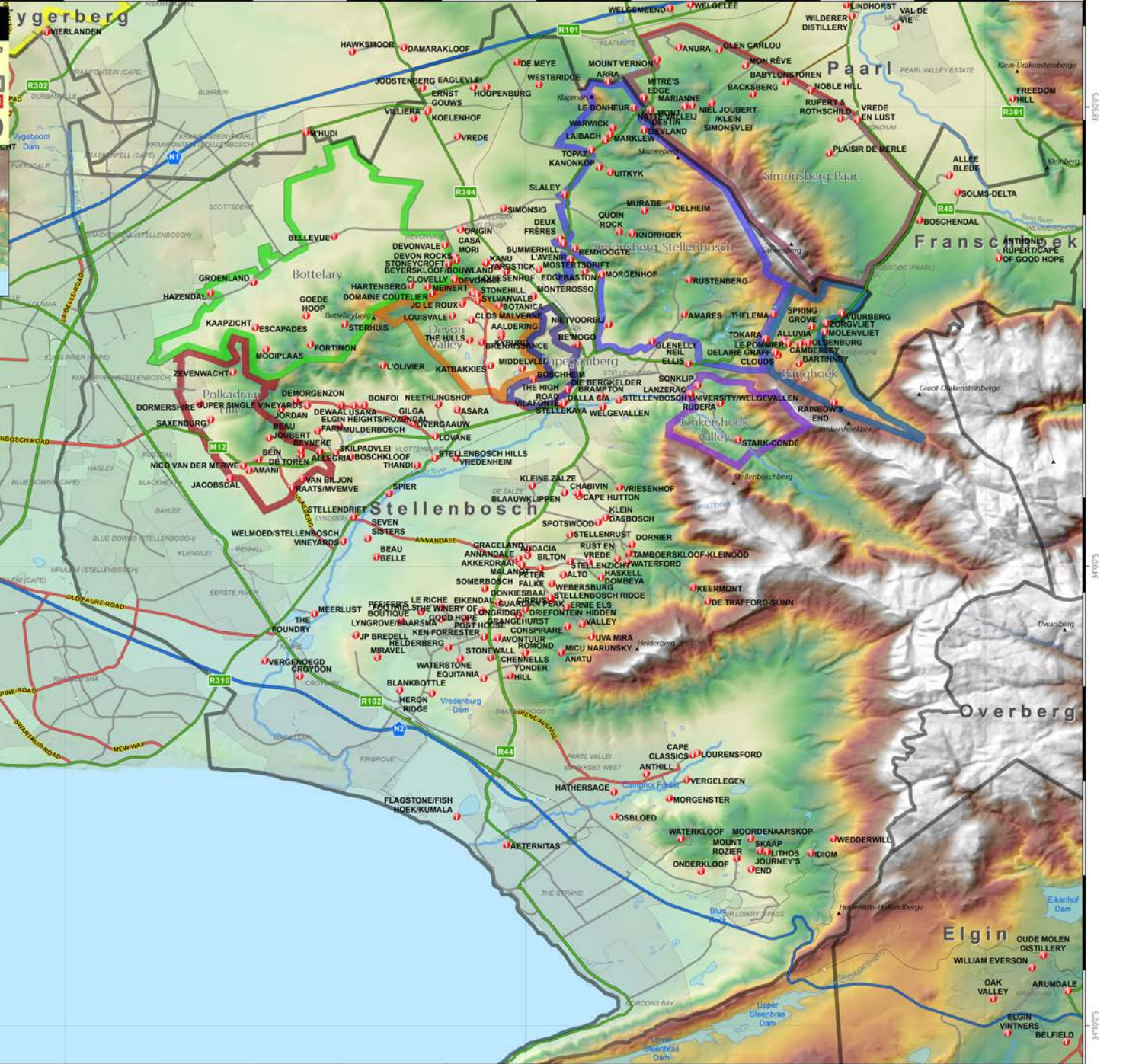
131 HA
COLOMBARD



Wine of Origin Districts

STELLENBOSCH

- National Roads
- Trunk roads
- Primary roads
- Secondary roads
- Gravel Roads
- Railways
- Cellars
- Mountains
- District boundaries
- Ward boundaries
- Merwede





SIMONSBERG

L'Avenir Single Block Chenin Blanc 2015

2 ha, south-facing
block

Planted in 1973

Sometimes gets
small amount of
botrytis

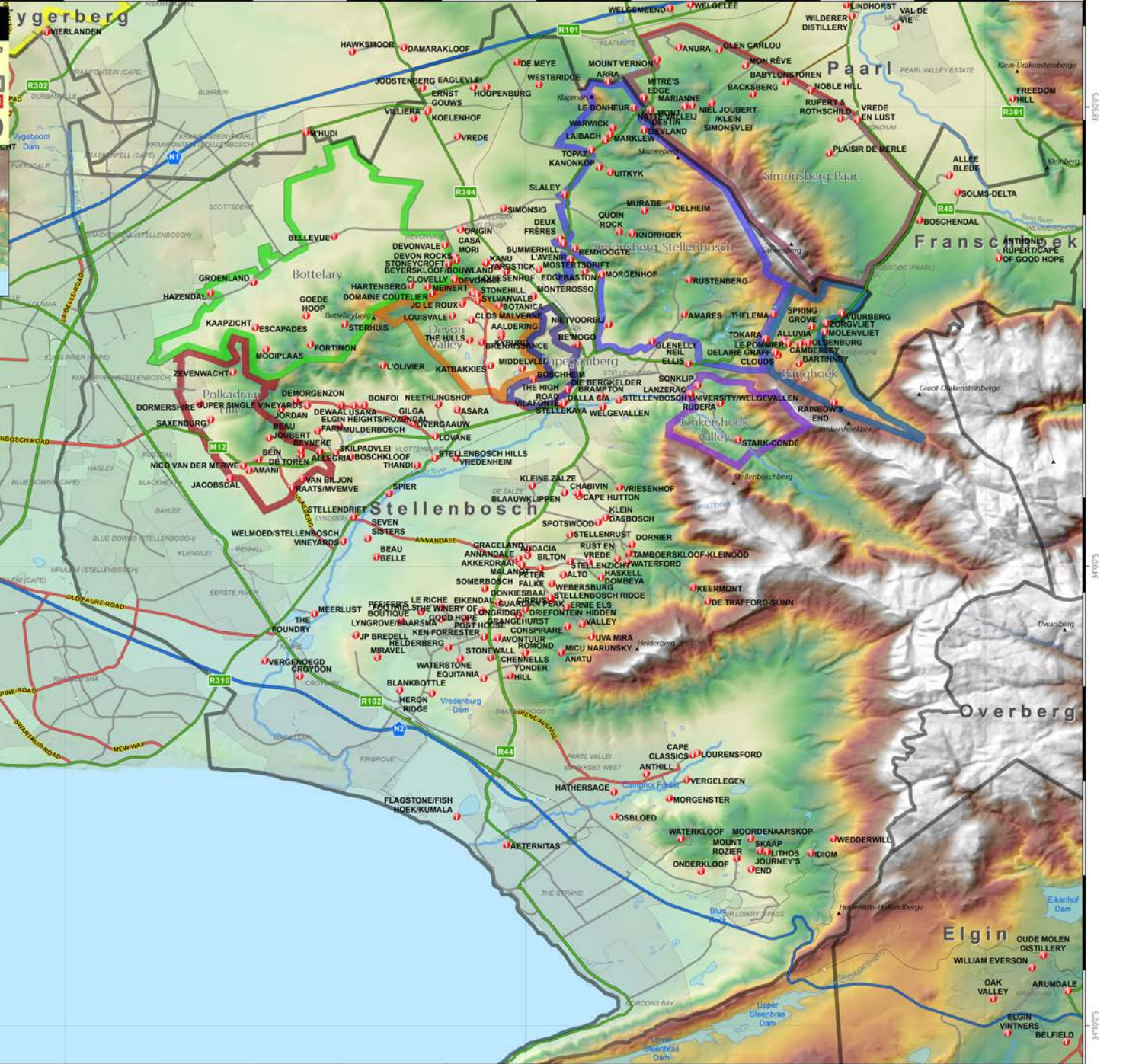
Fermentation starts in
stainless steel; after 3 days
transferred to older Acacia
and French Oak

No malolactic
fermentation

12 months on lees, with
batonnage

STELLENBOSCH

- National Roads
- Trunk roads
- Primary roads
- Secondary roads
- Gravel Roads
- Railways
- Cellars
- Mountains
- District boundaries
- Ward boundaries
- Merwede





Raats Old Vine Chenin Blanc 2016

From 3 parcels, w/granite and sandstone soils

40+ year old vines, bush & trellised



70% stainless steel,
from granite soils;
30% in 300L French
oak (20% new)

Blended after 9
months; aged 2
more months before
bottling

Defining Chenin?

The Chenin Blanc Association's (previous classification) of the six recognized styles:

- Fresh & fruity (less than 9 g/ℓ residual sugar)
- Rich & ripe – unwooded (less than 9 g/ℓ residual sugar)
- Rich & ripe – wooded (less than 9 g/ℓ residual sugar)
- Rich & ripe – slightly sweet (between 9 and 30 g/ℓ residual sugar)
- Sweet (more than 30 g/ℓ residual sugar)
- Sparkling Tank fermented or Cap Classique



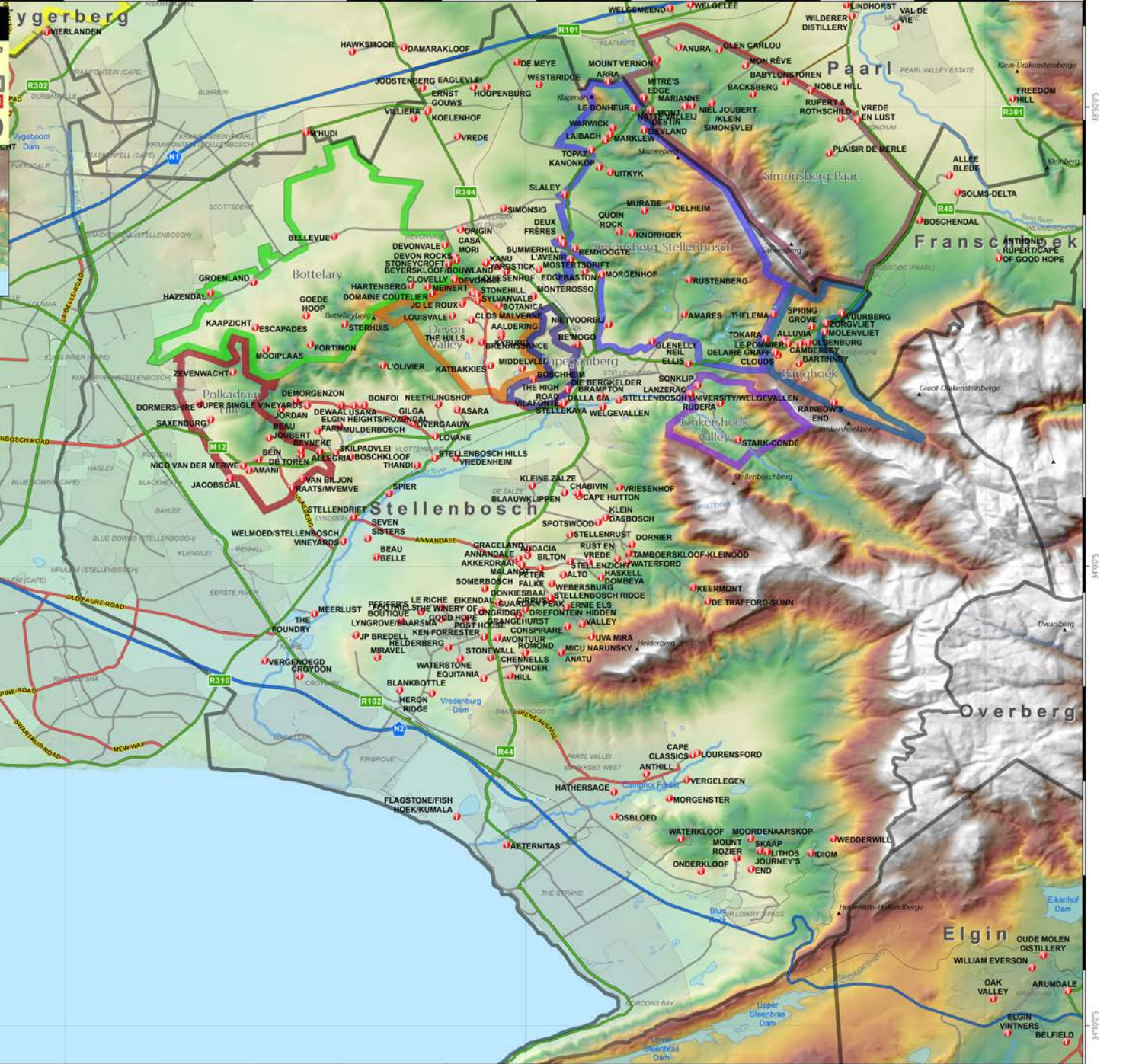
Chenin Blanc





STELLENBOSCH

- National Roads
- Trunk roads
- Primary roads
- Secondary roads
- Gravel Roads
- Railways
- Cellars
- Mountains
- District boundaries
- Ward boundaries
- Merwede



Stellenbosch

Franschhoek

Overberg

Elgin

Ken Forrester FMC 2015

43-year-old bushvines

Harvested in 3 passes;
last includes botrytized
grapes

3 tons/ha

Spontaneous
fermentation in new
400L French oak

12 months in barrel





Wines of
**South
Africa**

welcome to our world of discovery



/WOSAUS



@WOSA_USA



@WOSA_USA

#drinkSA