



WINE REGIONS OF AUSTRALIA



WESTERN AUSTRALIA

- 1 Swan District
- 2 Perth Hills
- 3 Peel
- 4 Geographe
- 5 Margaret River
- 6 Blackwood Valley
- 7 Pemberton
- 8 Manjimup
- 9 Great Southern

SOUTH AUSTRALIA

- 10 Southern Flinders Ranges
- 11 Clare Valley
- 12 Barossa Valley
- 13 Eden Valley
- 14 Riverland
- 15 Adelaide Plains
- 16 Adelaide Hills
- 17 McLaren Vale
- 18 Kangaroo Island
- 19 Southern Fleurieu
- 20 Currency Creek
- 21 Langhorne Creek
- 22 Padthaway
- 23 Mount Benson
- 24 Wrattenbully
- 25 Robe
- 26 Coonawarra

QUEENSLAND

- 27 South Burnett
- 28 Granite Belt

NEW SOUTH WALES

- 29 New England Australia
- 30 Hastings River
- 31 Hunter
- 32 Mudgee
- 33 Orange
- 34 Cowra
- 35 Riverina
- 36 Hilltops
- 37 Southern Highlands
- 38 Gundagai
- 39 Canberra District
- 40 Shoalhaven Coast
- 41 Tumbarumba
- 42 Perricoota
- 43 Murray Darling
- 44 Swan Hill

VICTORIA

- 43 Murray Darling
- 44 Swan Hill
- 45 Goulburn Valley
- 46 Rutherglen
- 47 Glenrowan
- 48 Beechworth
- 49 King Valley
- 50 Alpine Valleys
- 51 Strathbogie Ranges
- 52 Upper Goulburn
- 53 Heathcote
- 54 Bendigo
- 55 Pyrenees
- 56 Macedon Ranges
- 57 Sunbury
- 58 Grampians
- 59 Henty
- 60 Geelong
- 61 Yarra Valley
- 62 Mornington Peninsula
- 63 Gippsland*

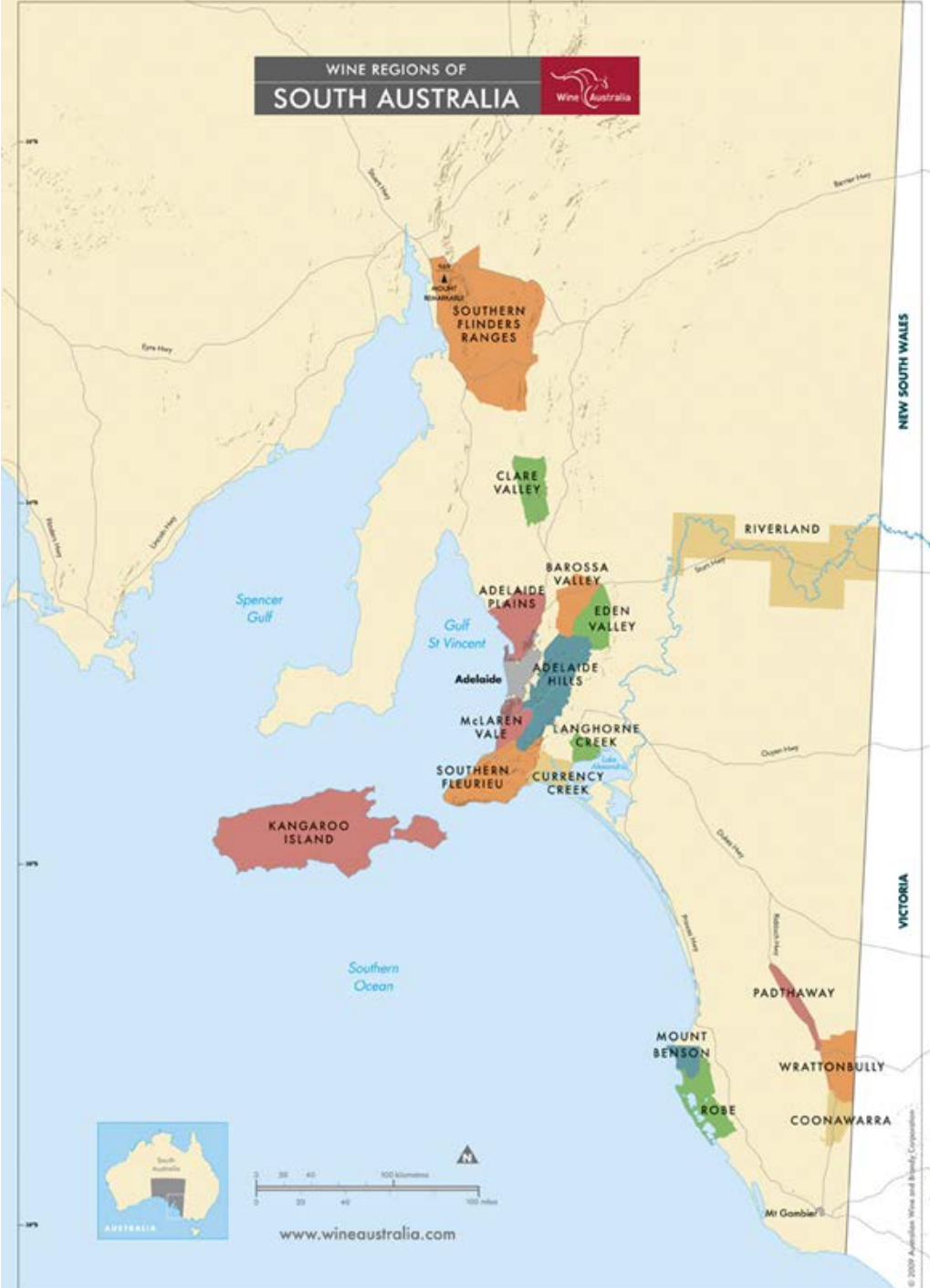
TASMANIA

- 64 Tasmania*



* Gippsland, South Eastern Australia and Tasmania are zones.

WINE REGIONS OF
SOUTH AUSTRALIA



www.wineaustralia.com

© 2009 Australian Wine and Brandy Corporation

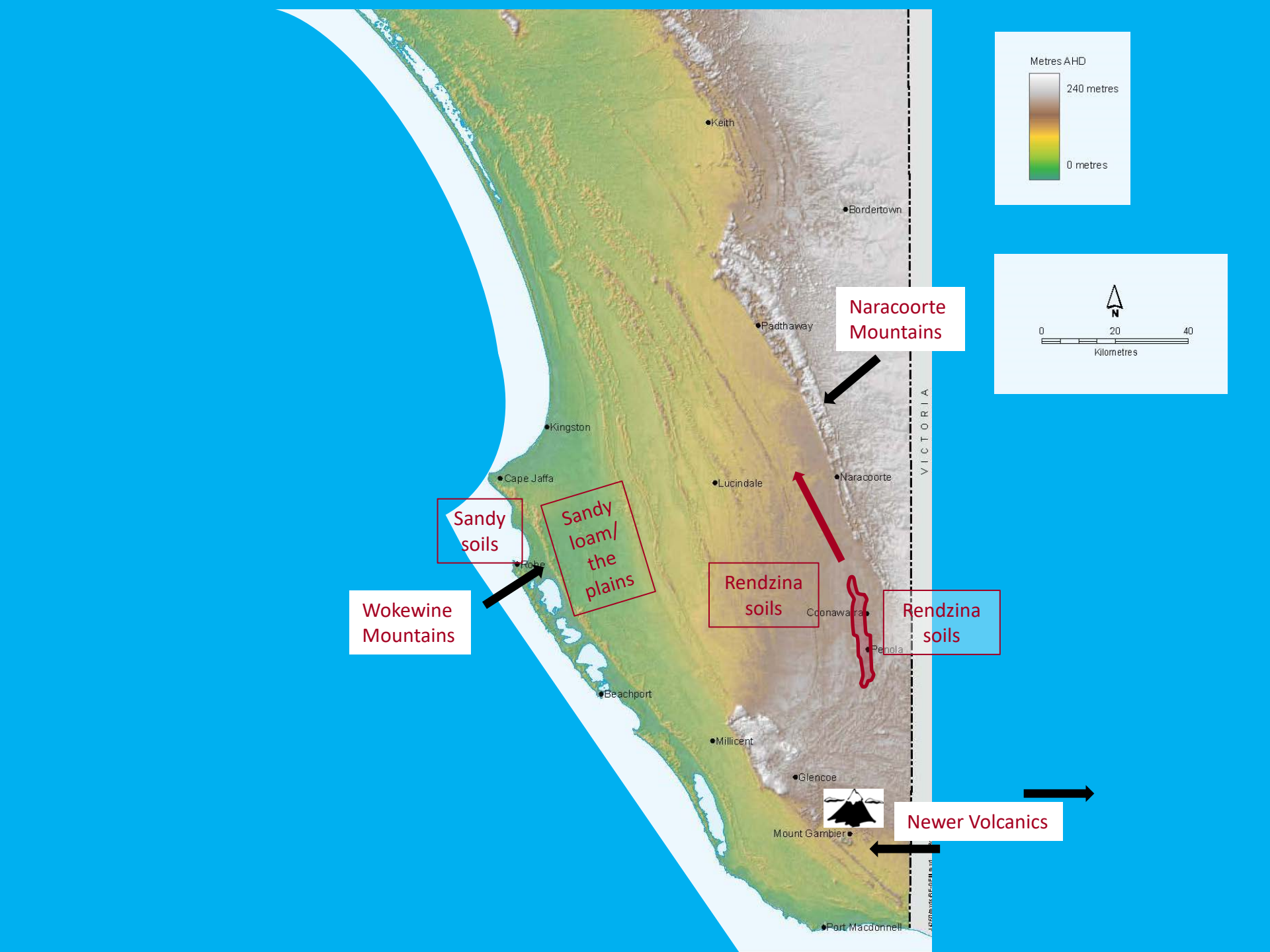


Limestone Coast Wine Regions & Vineyards



- Towns
- Vineyards
- Limestone Coast Zone
- Coonawarra Wine Region
- Mt Benson Wine Region
- Mt Gambier Wine Region
- Padthaway Wine Region
- Robe Wine Region
- Wrattenbully Wine Region



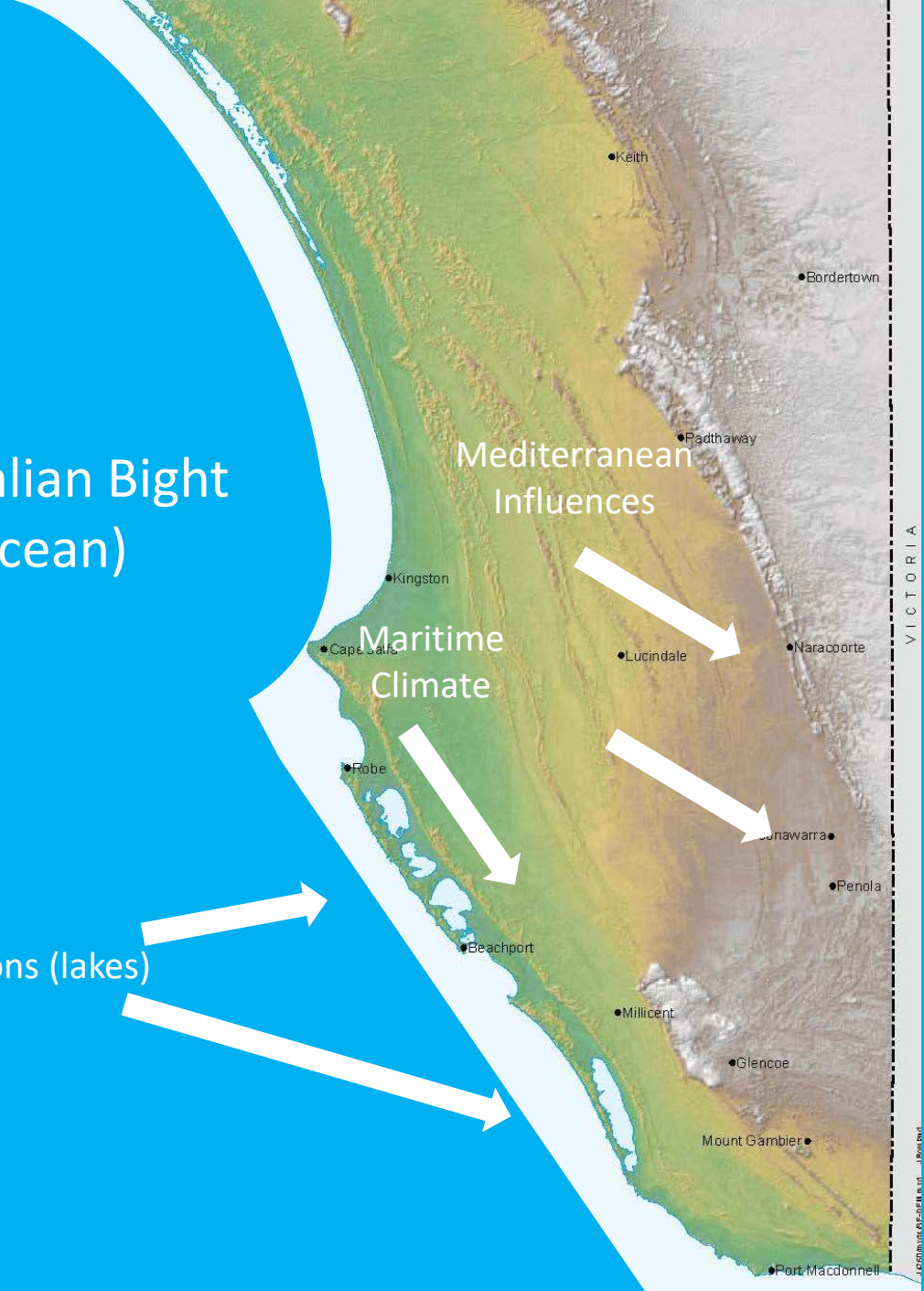
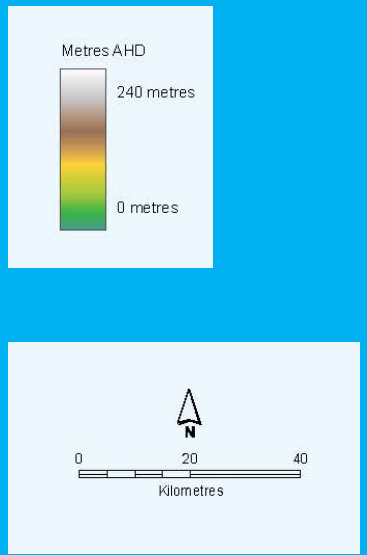
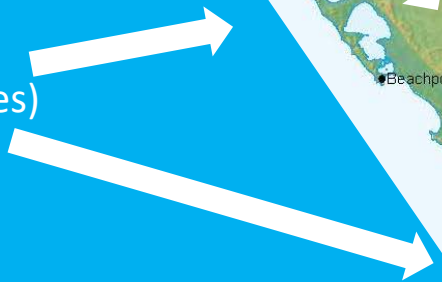


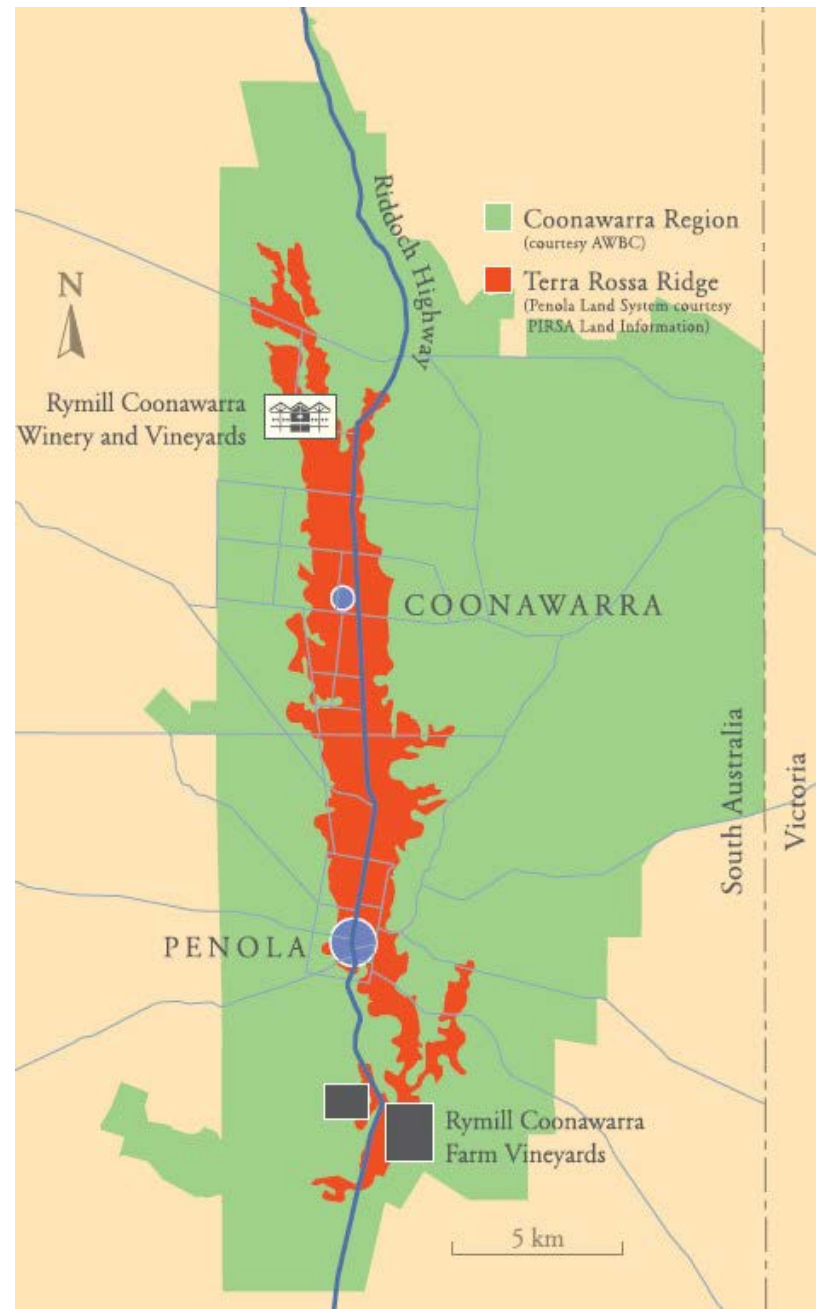
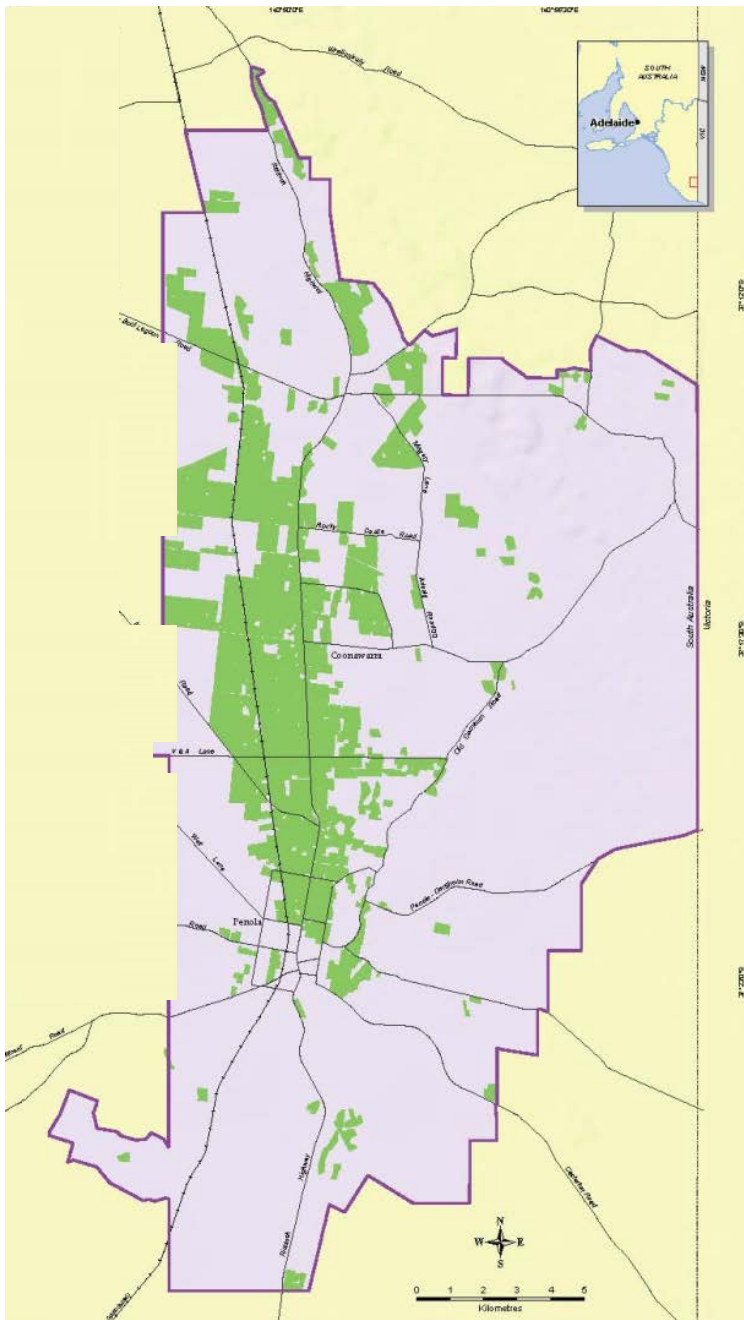
Great Australian Bight
(Southern Ocean)

Salt Water Lagoons (lakes)

Mediterranean
Influences

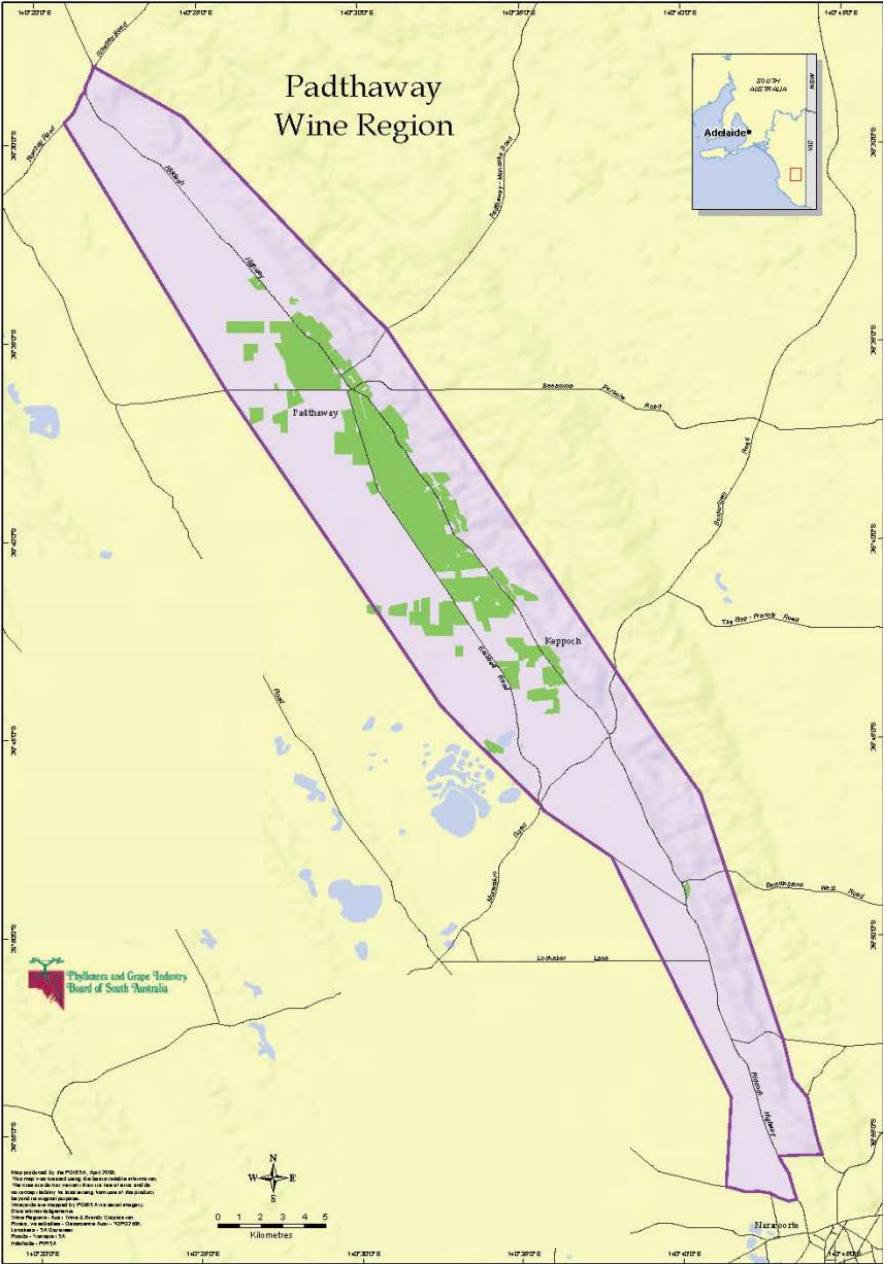
Maritime
Climate





Coonawarra map via: Phylloxera and Grape Industry Board of South Australia

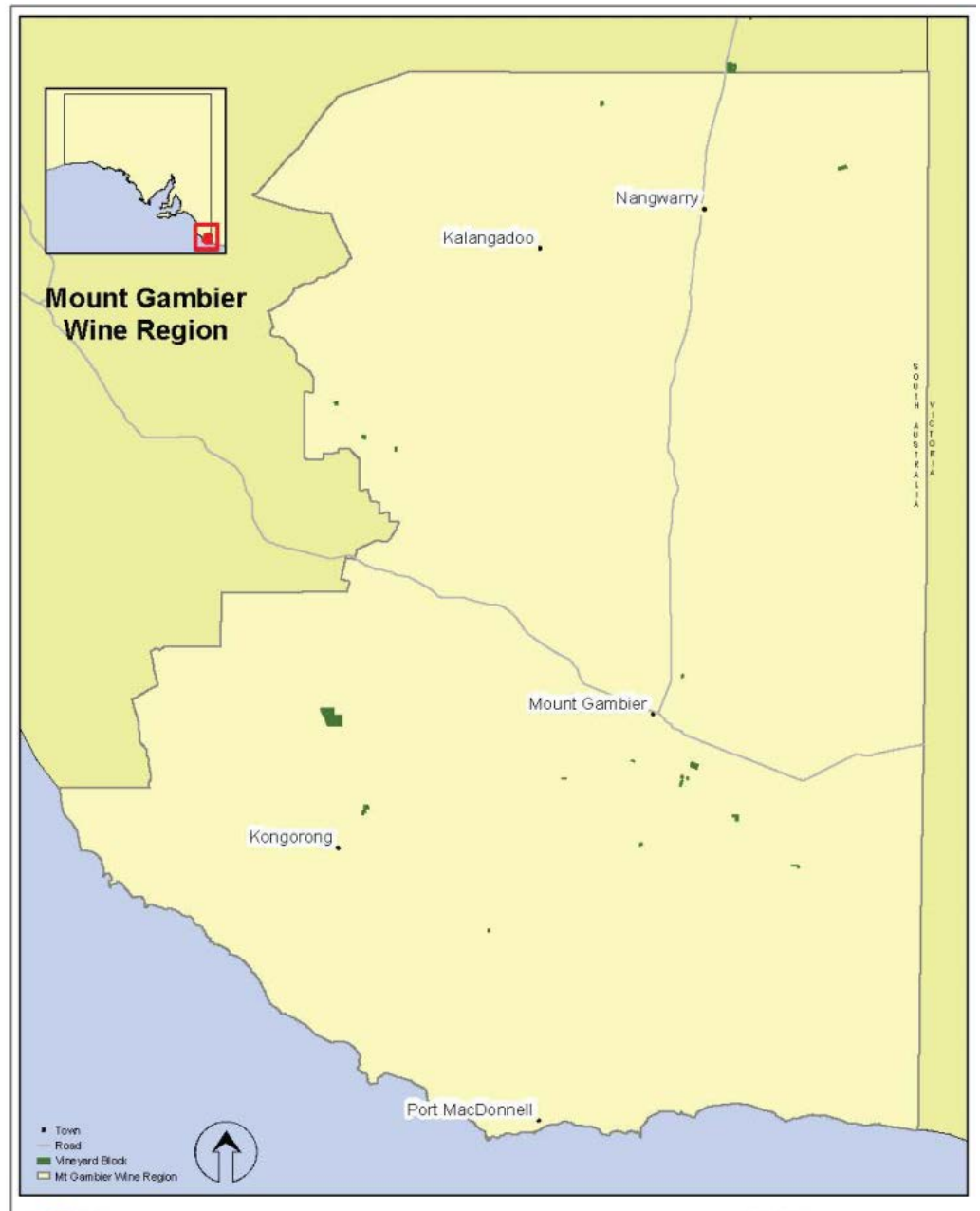
Terra Rossa map via <http://www.rymill.com.au/>



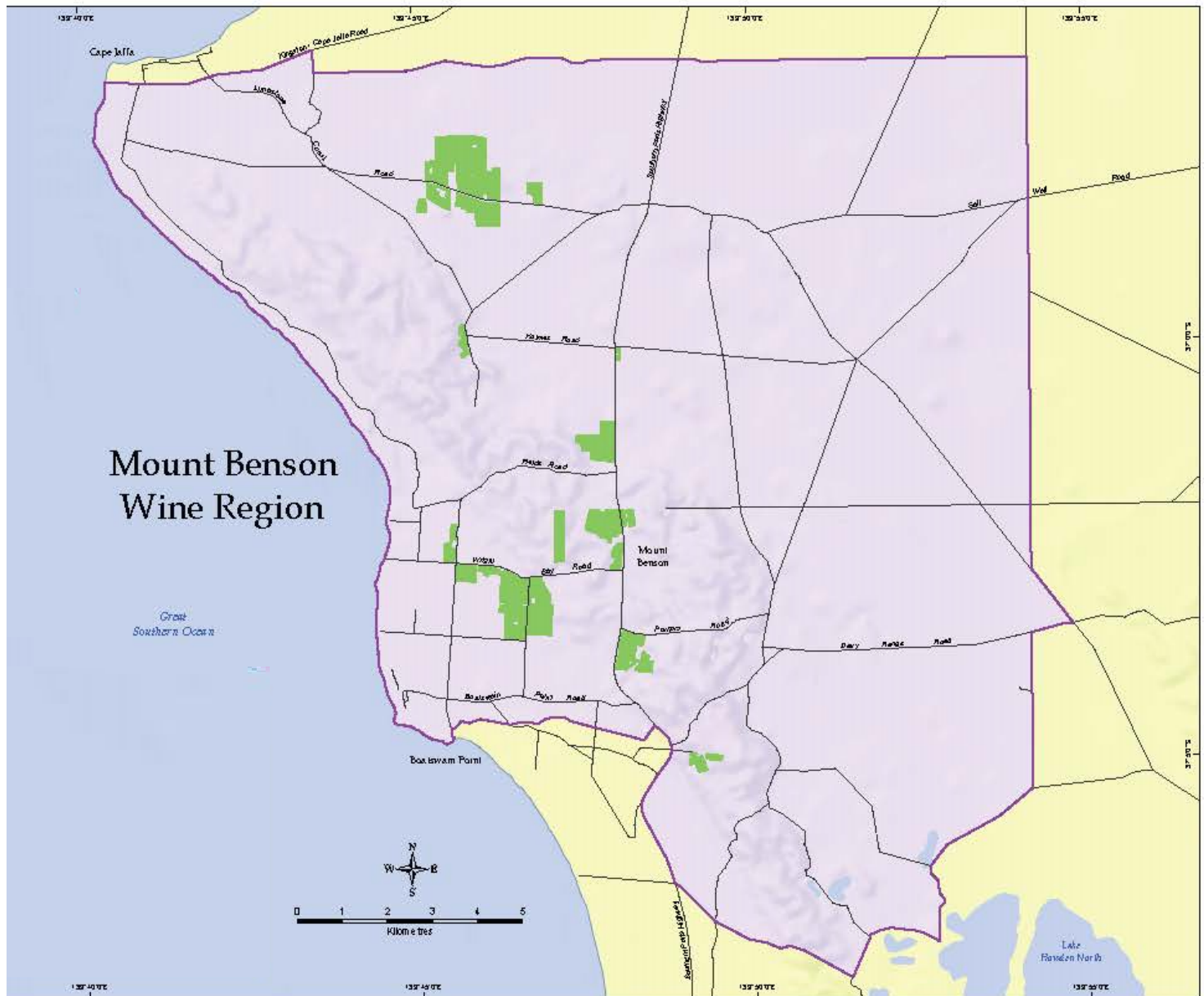
Phylloxera and Grape Industry Board of South Australia

Map published by the PGI Board, April 2008.
 The map is not intended to be used as a cadastral or planning map.
 The map is not intended to be used as a map of land ownership.
 The map is not intended to be used as a map of land use.
 The map is not intended to be used as a map of land value.
 The map is not intended to be used as a map of land title.
 The map is not intended to be used as a map of land tenure.
 The map is not intended to be used as a map of land rights.
 The map is not intended to be used as a map of land interests.
 The map is not intended to be used as a map of land obligations.
 The map is not intended to be used as a map of land liabilities.
 The map is not intended to be used as a map of land claims.
 The map is not intended to be used as a map of land disputes.
 The map is not intended to be used as a map of land boundaries.
 The map is not intended to be used as a map of land encroachments.
 The map is not intended to be used as a map of land easements.
 The map is not intended to be used as a map of land covenants.
 The map is not intended to be used as a map of land restrictions.
 The map is not intended to be used as a map of land conditions.
 The map is not intended to be used as a map of land requirements.
 The map is not intended to be used as a map of land obligations.
 The map is not intended to be used as a map of land liabilities.
 The map is not intended to be used as a map of land claims.
 The map is not intended to be used as a map of land disputes.
 The map is not intended to be used as a map of land boundaries.
 The map is not intended to be used as a map of land encroachments.
 The map is not intended to be used as a map of land easements.
 The map is not intended to be used as a map of land covenants.
 The map is not intended to be used as a map of land restrictions.
 The map is not intended to be used as a map of land conditions.
 The map is not intended to be used as a map of land requirements.

Padthaway map via: Phylloxera and Grape Industry Board of South Australia



Mount Gambier map via: Phylloxera and Grape Industry Board of South Australia



Mount Benson Wine Region

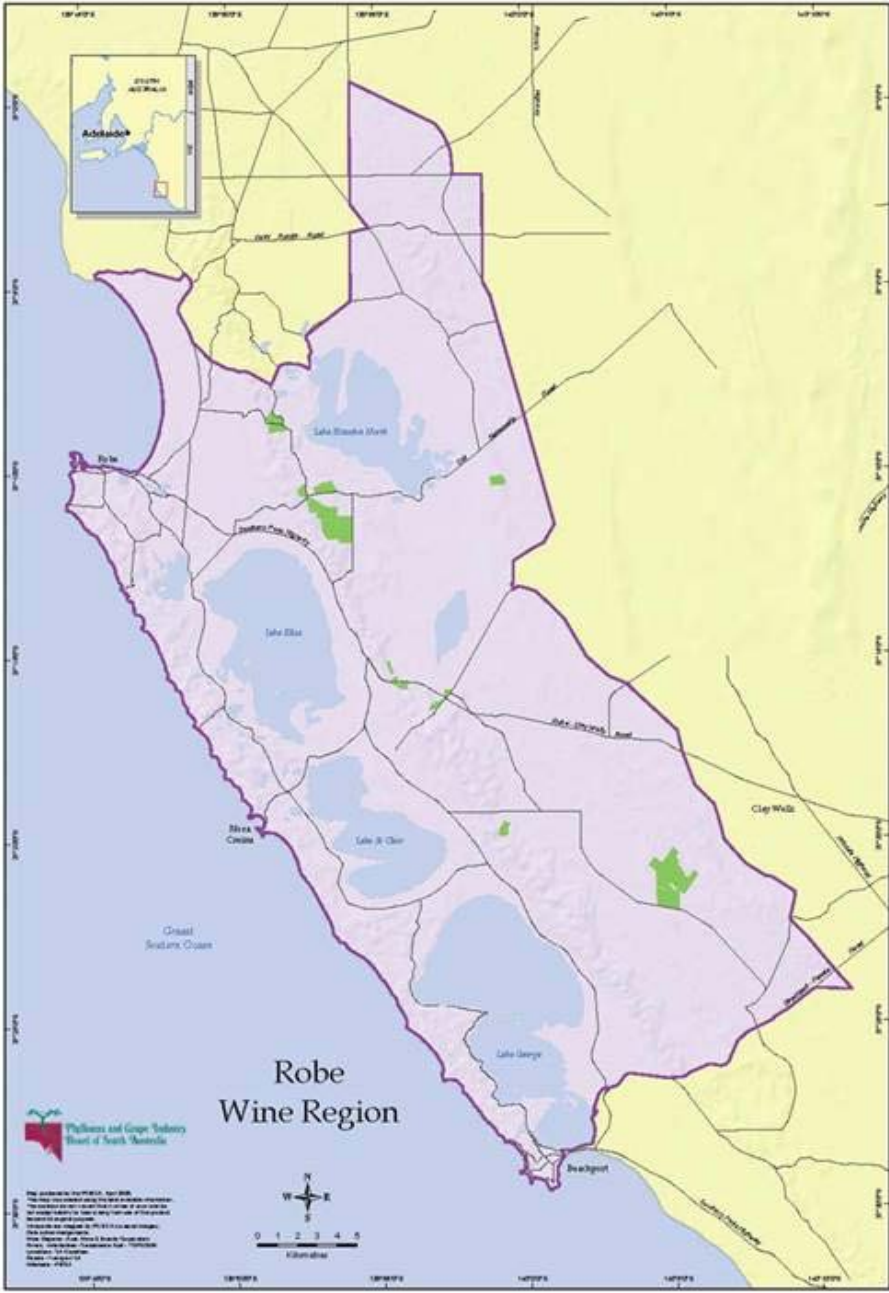
Great
Southern Ocean

Mount
Benson



0 1 2 3 4 5
Kilometres

Lake
Flouren North



Robe Wine Region map via: Phylloxera and Grape Industry Board of South Australia

MURRAY DARLING

Mildura

WINE REGIONS OF VICTORIA



SWAN HILL

NEW SOUTH WALES

Lake Albacutya
Lake Hindmarsh

GOULBURN VALLEY

GLENROWAN

RUTHERGLEN

BEECHWORTH

HEATHCOTE

STRATHBOGIE RANGES

KING VALLEY

ALPINE VALLEYS

PYRENEES

BENDIGO

MACEDON RANGES

UPPER GOULBURN

GRAMPIANS

HENTY

SUNBURY

YARRA VALLEY

GIPPSLAND*

GEELONG

MORNINGTON PENINSULA

Warrnambool

Lake Corangomite
Lake Colac



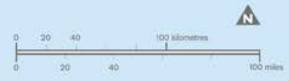
www.wineaustralia.com

*Gippsland is a zone.

SOUTH AUSTRALIA

© 2009 Australian Wine and Brandy Corporation

WINE REGIONS OF WESTERN AUSTRALIA



www.wineaustralia.com

