



Wines of  
**South  
Africa**

welcome to our world of discovery

---



/WOSAUS



@WOSA\_USA



@WOSA\_USA

#drinkSA



Eighth largest producer in the world – 1 414 474 tons (2012)

# WINEGROWING AREAS OF SOUTH AFRICA

## WESTERN CAPE

### COASTAL REGION

Districts:

- SWARTLAND
- STELLENBOSCH
- TYGEBERG
- CAPE POINT
- CONSTANTIA (Ward)
- TULBACH
- PAARL
- FRANSCHHOEK VALLEY
- DARLING
- WELLINGTON

### KLEIN KAROO

Districts:

- CALITZDORP
- LANGEBERG-GARCIA

### CAPE SOUTH COAST

Districts:

- OVERBERG
- WALKER BAY
- SWELLENDAM
- CAPE AGULHAS
- PLETTENBERG BAY
- ELGIN

### OLIFANTS RIVER

Districts:

- LUTZVILLE VALLEY
- CITRUSDAL VALLEY
- CITRUSDAL MOUNTAIN

### BREEDE RIVER VALLEY

Districts:

- BREEDEKLOOF
- WORCESTER
- ROBERTSON

### WARDS NOT PART OF A REGION

- CERES
- CEDERBERG
- PRINCE ALBERT VALLEY
- SWARTBERG
- LAMBERTS BAY

## NORTHERN CAPE

- CENTRAL ORANGE RIVER (Ward)

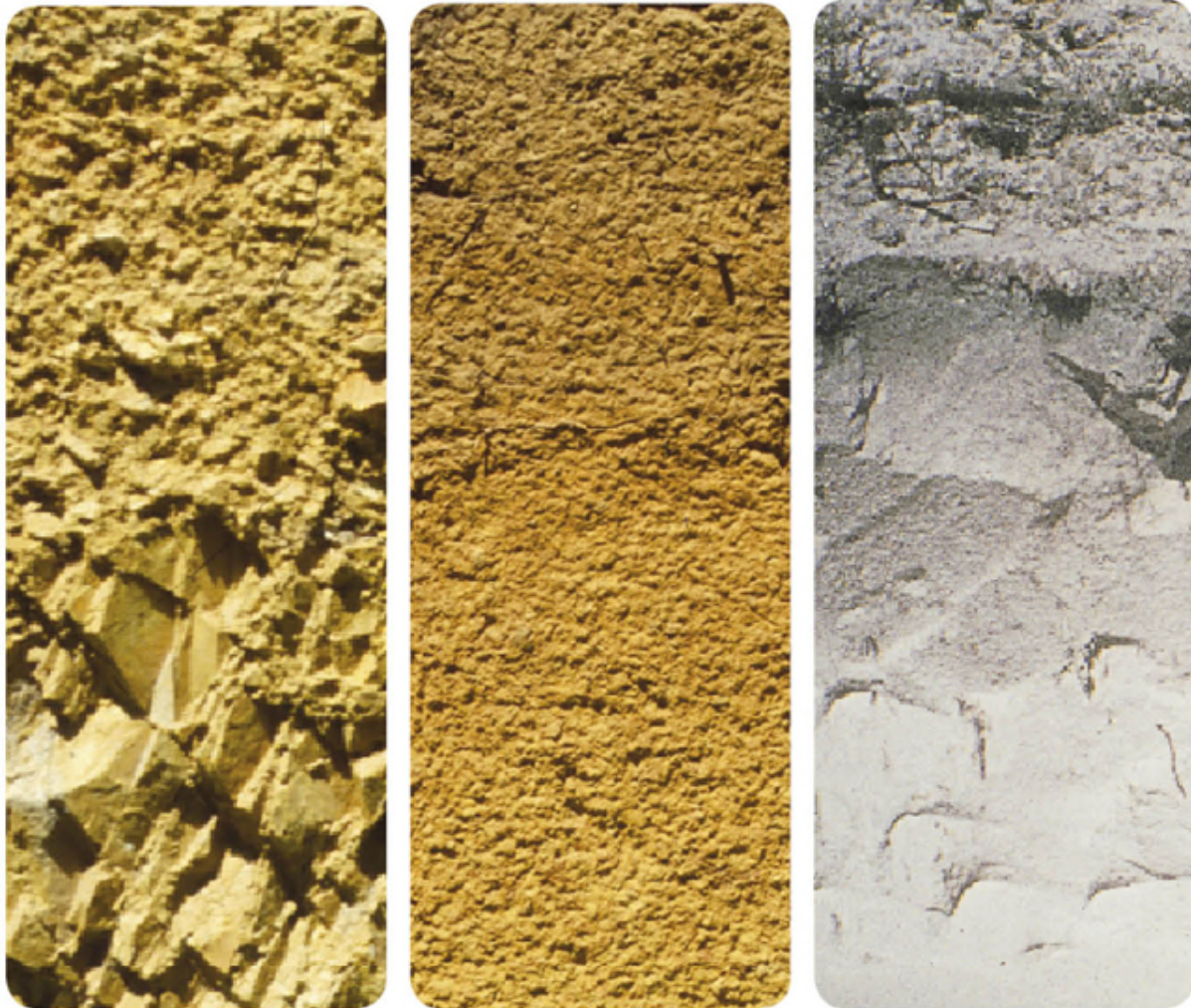




Our natural environment



Oldest viticultural soils



Soil types – shale, gravel and sandstone



Two mighty oceans generate cooling fogs, mists and winds



Steep mountain ranges



# Ken Forrester 'Sparklehorse' 2016

W.O. Western Cape – Stellenbosch,  
Helderberg

41-year-old vines, dry-farmed

100% Chenin Blanc      4-6 tons/ha

14 months on lees

*Alc: 12.5% Dosage: 3.2 g/L TA: 7.4 g/L pH: 3.2*



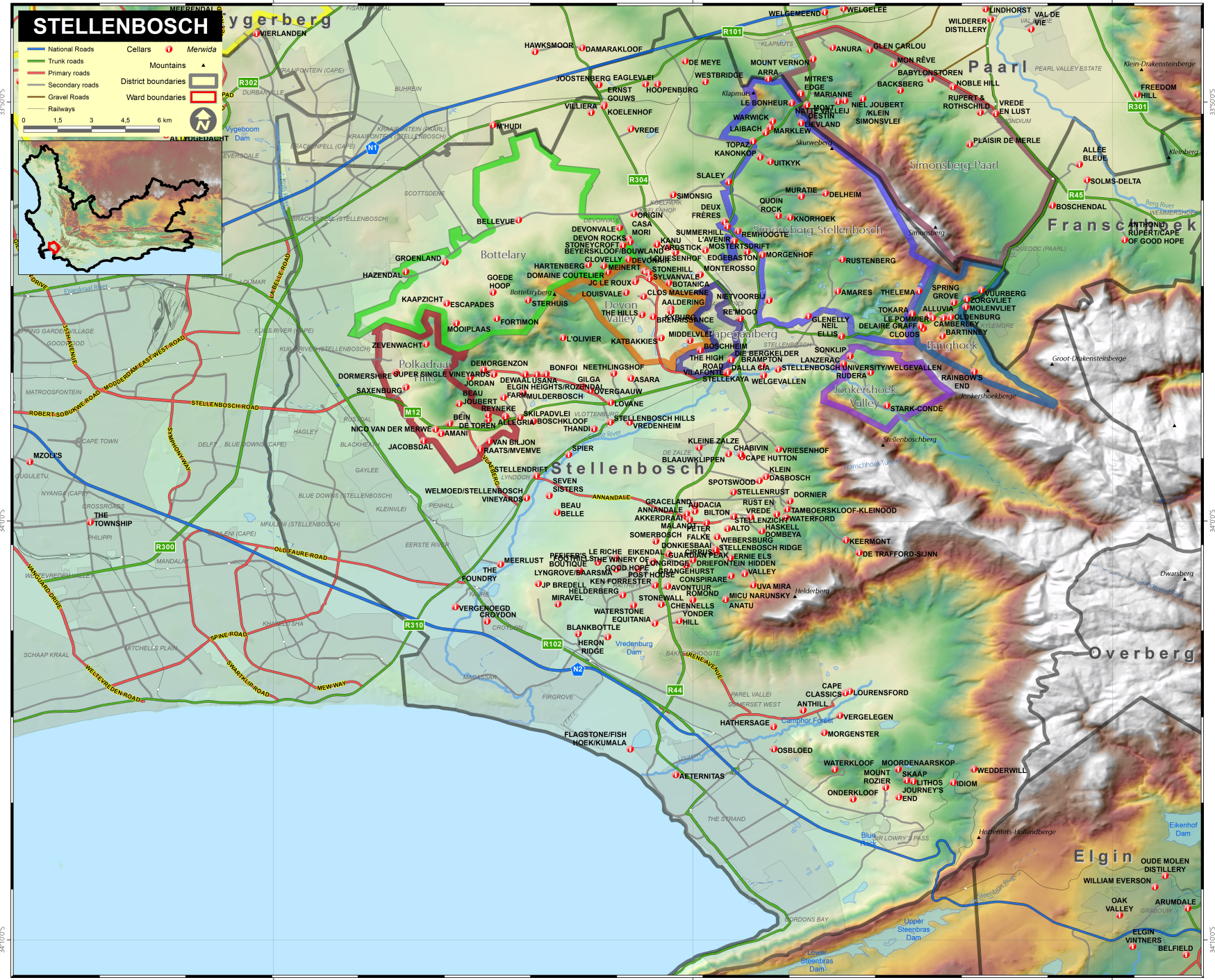
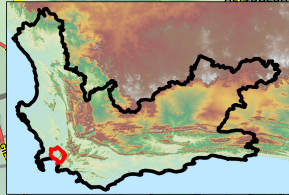


# STELLENBOSCH

- National Roads
  - Trunk roads
  - Primary roads
  - Secondary roads
  - Gravel Roads
  - Railways
- Cellars
- Mountains
- District boundaries
- Ward boundaries



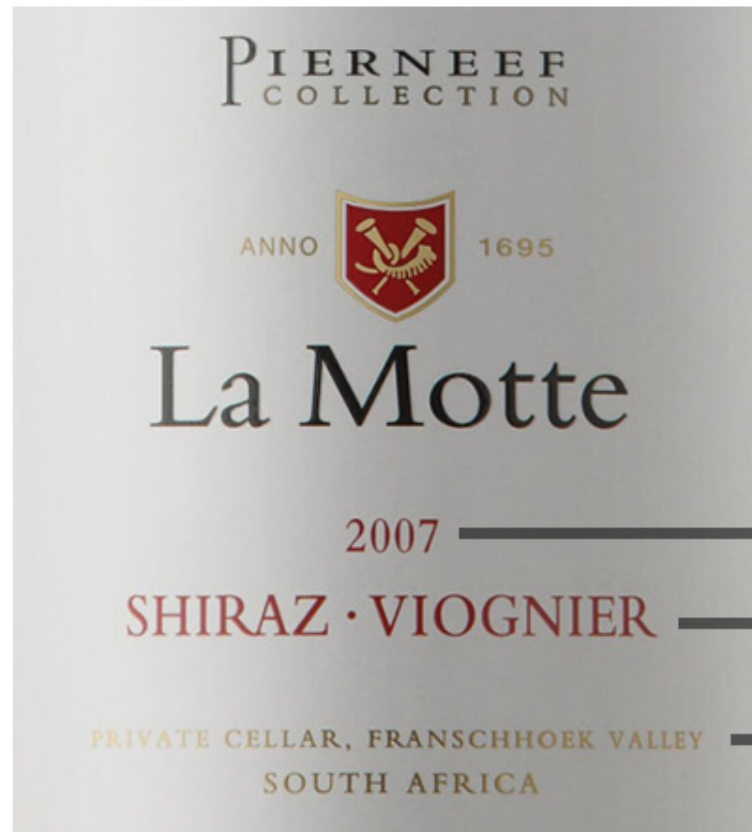
0 1.5 3 4.5 6 km





## **Wines of Origin**

Regions, Districts, Wards, Estates and Single Vineyards



2007

Vintage

SHIRAZ · VIOGNIER

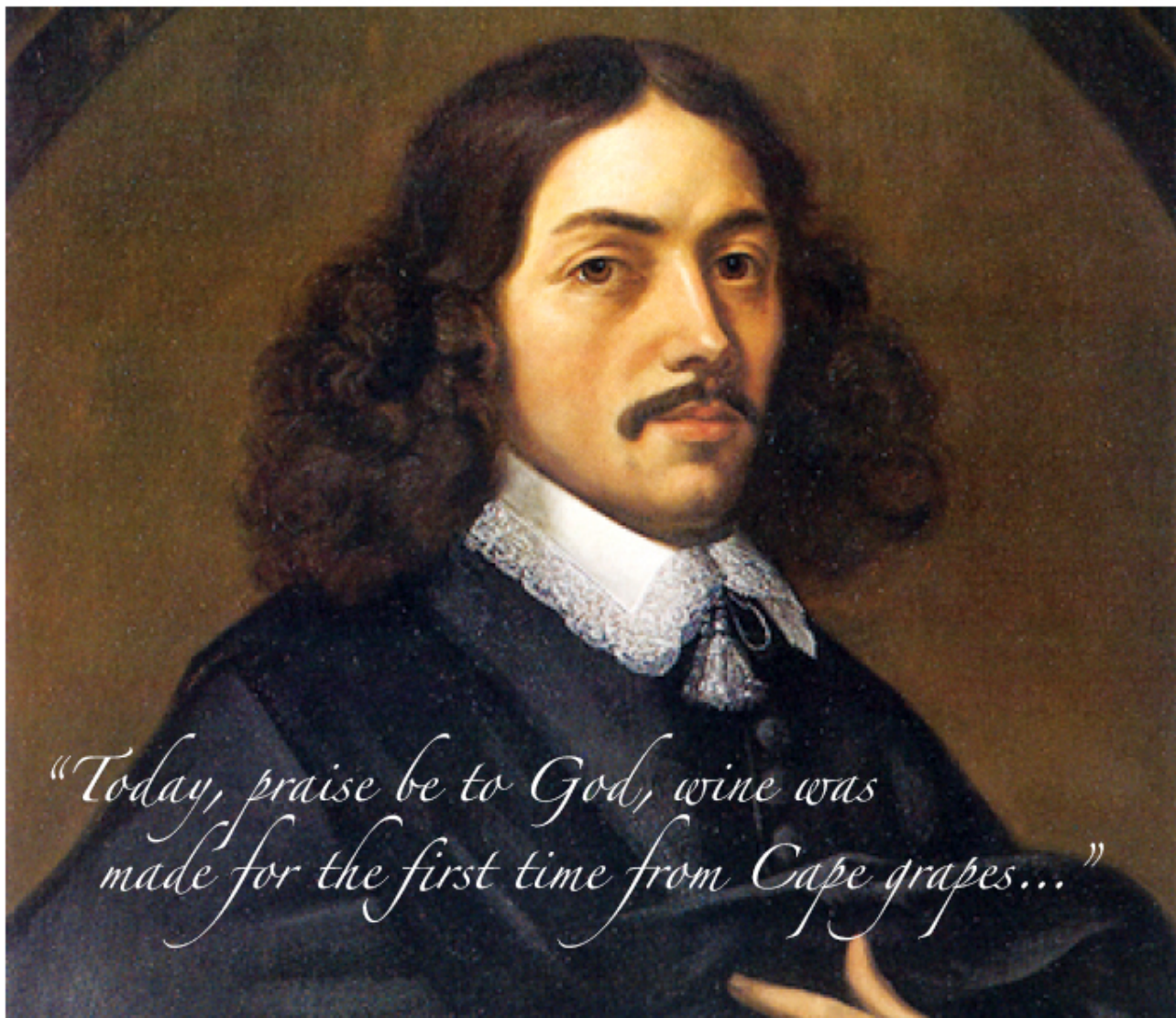
Variety

PRIVATE CELLAR, FRANSCHHOEK VALLEY  
SOUTH AFRICA

Origin



16 April 1652 – first fleet of VOC ships arrives in Table Bay



Jan van Riebeeck's famous diary entry of 2 February 1659



1688 – French Huguenots





Mid 1700s – Our wine was famous in the courts of Europe

## Important Dates:

1935: Crayfish Agreement

1971: 1<sup>st</sup> Kaapse Vonkel

1984: 1<sup>st</sup> bubbly from only  
Champagne varieties

1992: Creation of  
Methode Cap Classique  
designation



# Simonsig Kaapse Vonkel Brut 2015

49% Pinot Noir

49% Chardonnay  
(portion barrel-fermented)

3% Pinot Meunier

No malo



*Alc: 12.6% RS: 4.0 g/L TA: 7.2 g/L pH: 3.2*





Coastal Region

Paarl

# Backsberg Kosher Brut NV

W.O. Paarl



# Backsberg Kosher Brut 2016

100% Chardonnay

Ave. yield 6 tons/ha

Flash pasteurized  
before 2<sup>nd</sup> fermentation



*Alc: 12.79% RS 8.1 g/L TA: 6.1 g/L pH: 3.27*

**INTEGRITY &  
SUSTAINABILITY**

*Certified*

**WINE AND SPIRIT BOARD**  
**www.swsa.co.za**

**4477  
796701**

Sustainability seal

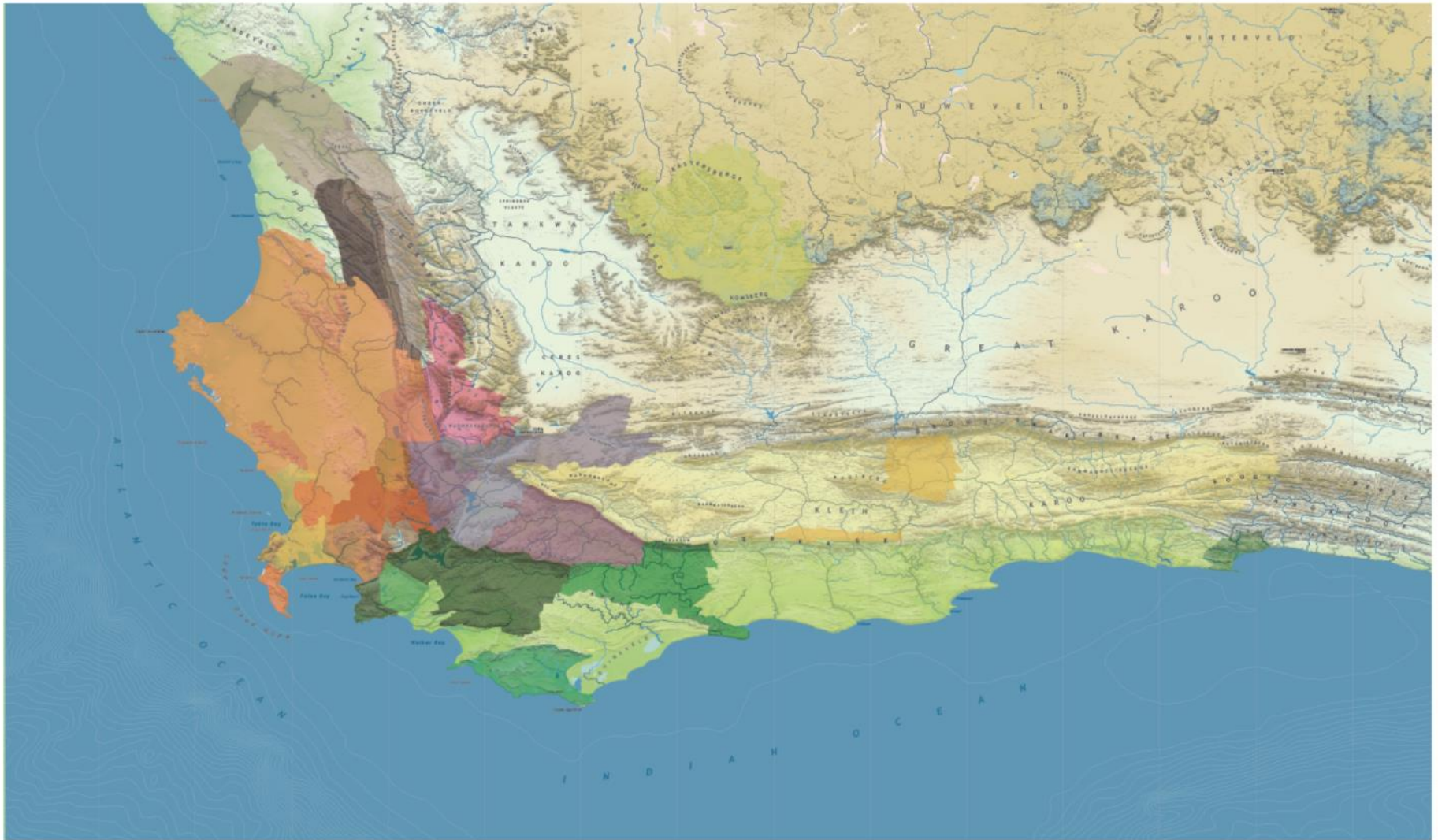




Biodiversity & Wine Initiative (BWI)



Cape Floral Kingdom – over 10 000 plant species



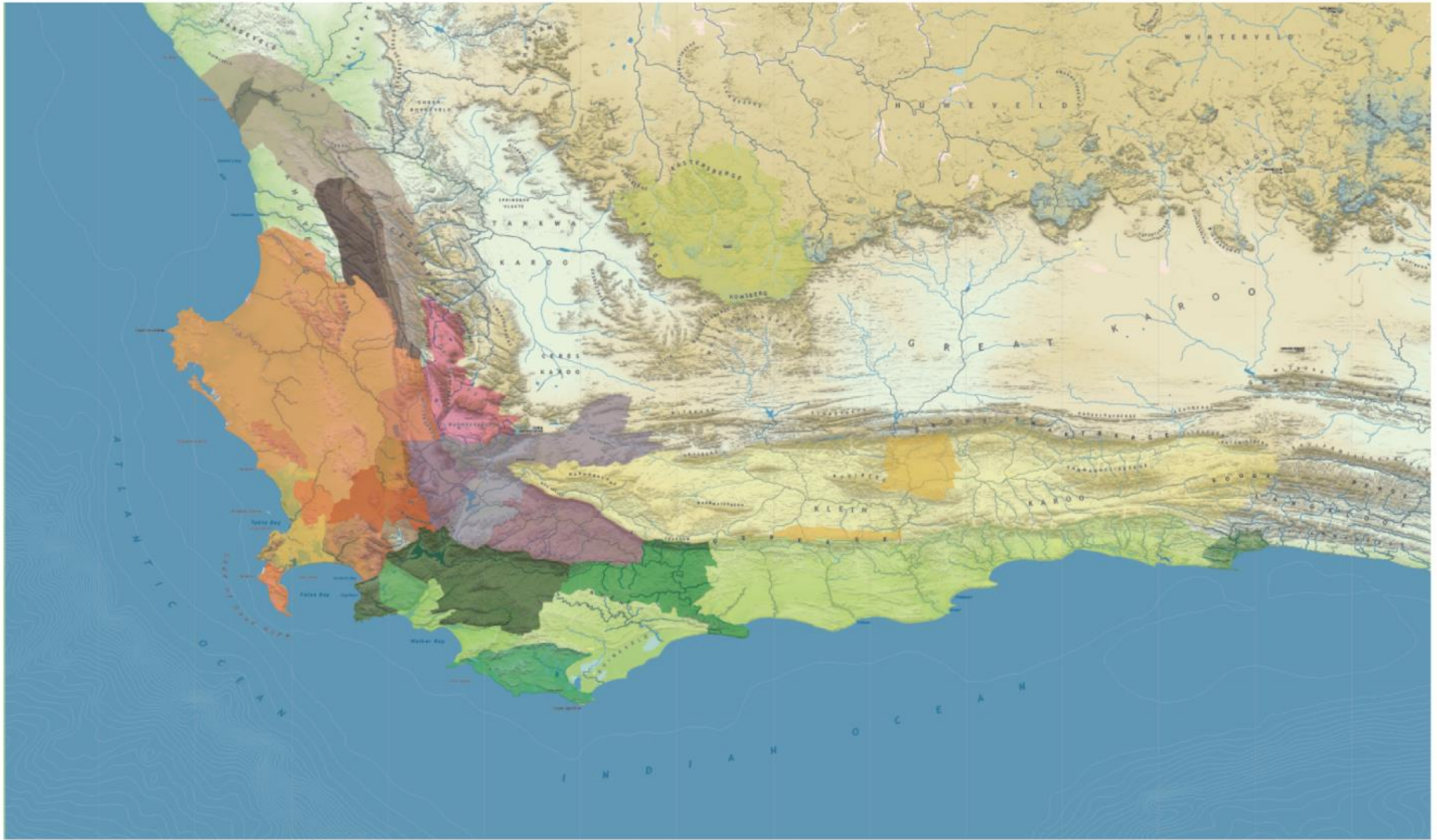
Our winelands are located at the very tip of South Africa.

# Colmant Brut Reserve NV

W.O. Western Cape

Franschhoek and Robertson





Our winelands are located at the very tip of South Africa.

# Colmant Brut Reserve NV

52% Chardonnay

48% Pinot Noir

80% from base vintage; 20% reserve, kept in barrel

10% of each vintage's base wines barrel fermented

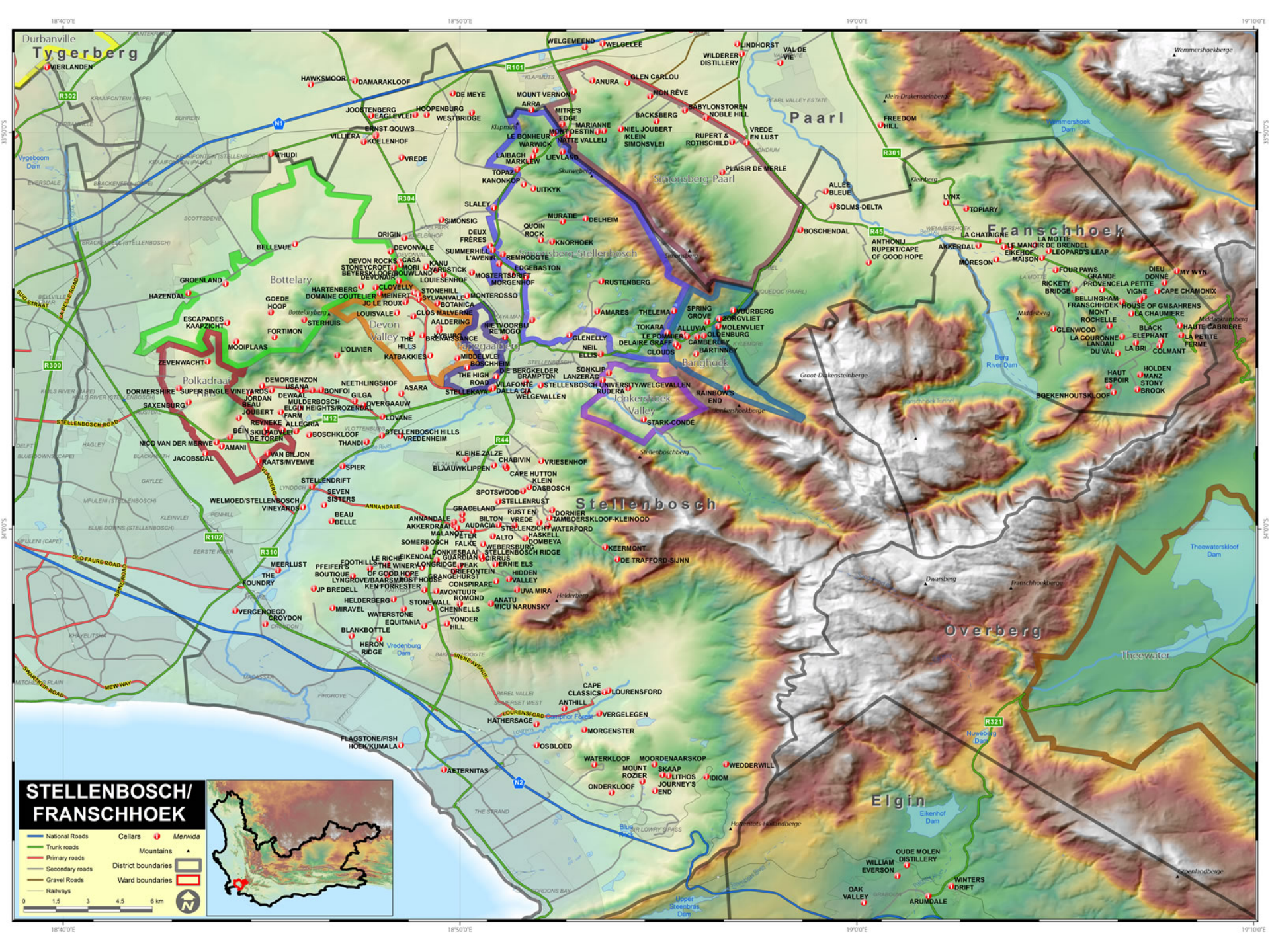
30 months on lees

*Alc. 12.5%; other data not available*

# Boschendal Brut Rosé NV

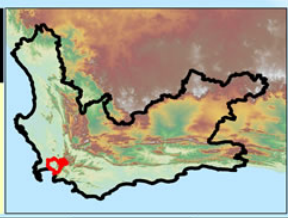
W.O. Western Cape





# STELLENBOSCH/ FRANSCHHOEK

- National Roads
- Trunk roads
- Primary roads
- Secondary roads
- Gravel Roads
- Railways
- Cellars
- ▲ Mountains
- District boundaries
- Ward boundaries







Boschendal

# Boschendal Brut Rosé 2015

30% Pinotage

50% Pinot Noir

20% Chardonnay

15-18 months on the lees



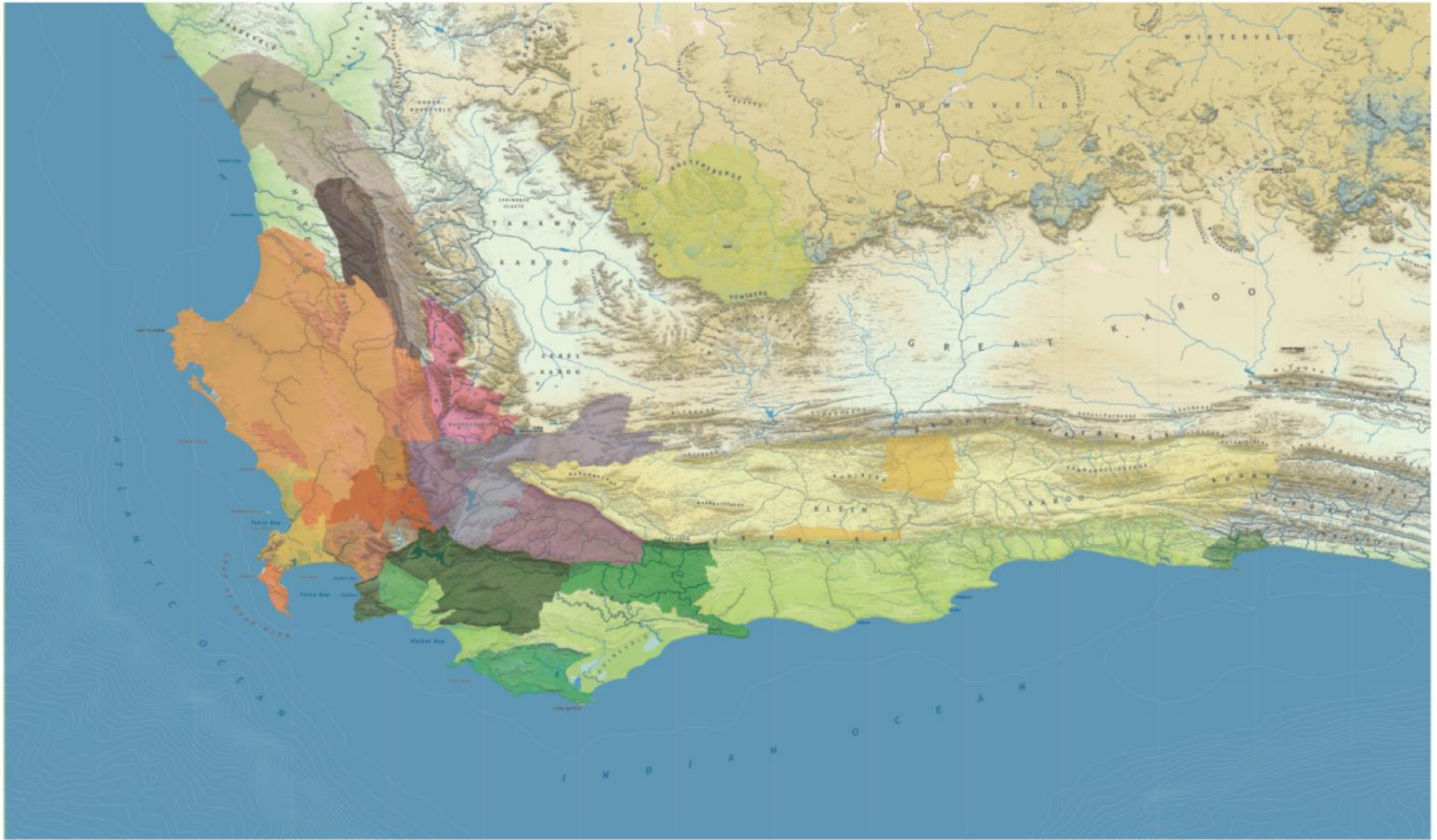
*Alc: 12.5% RS: 10 g/L TA: 5.8 g/L pH 3.5*

# Graham Beck Brut Rosé NV

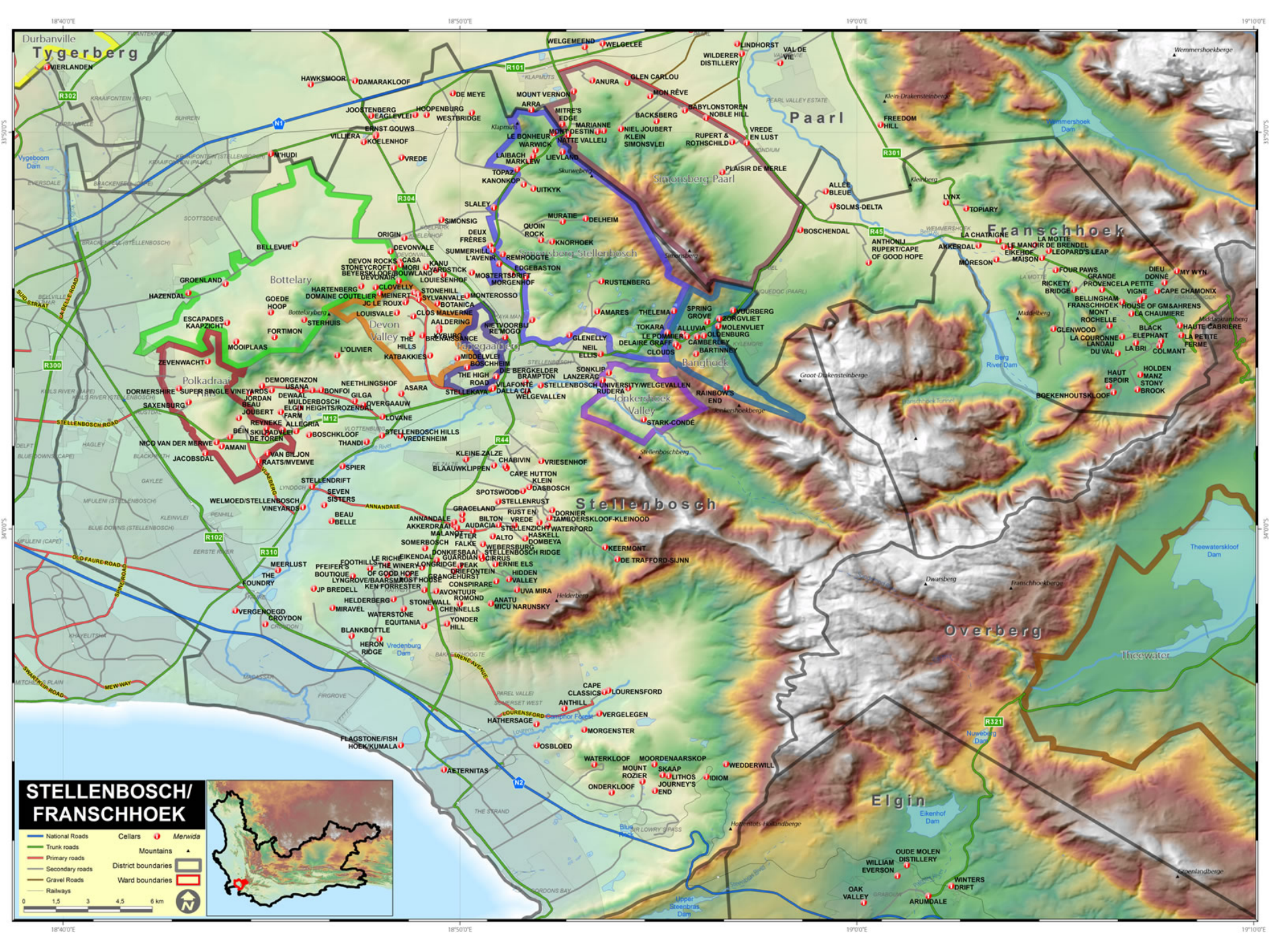
W.O. Western Cape

Robertson, Stellenbosch, and  
Franschhoek



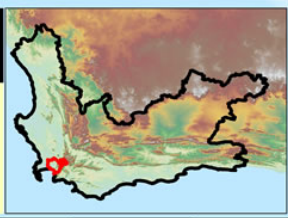


Our winelands are located at the very tip of South Africa.



# STELLENBOSCH/ FRANSCHHOEK

- National Roads
- Trunk roads
- Primary roads
- Secondary roads
- Gravel Roads
- Railways
- Cellars
- ▲ Mountains
- District boundaries
- Ward boundaries

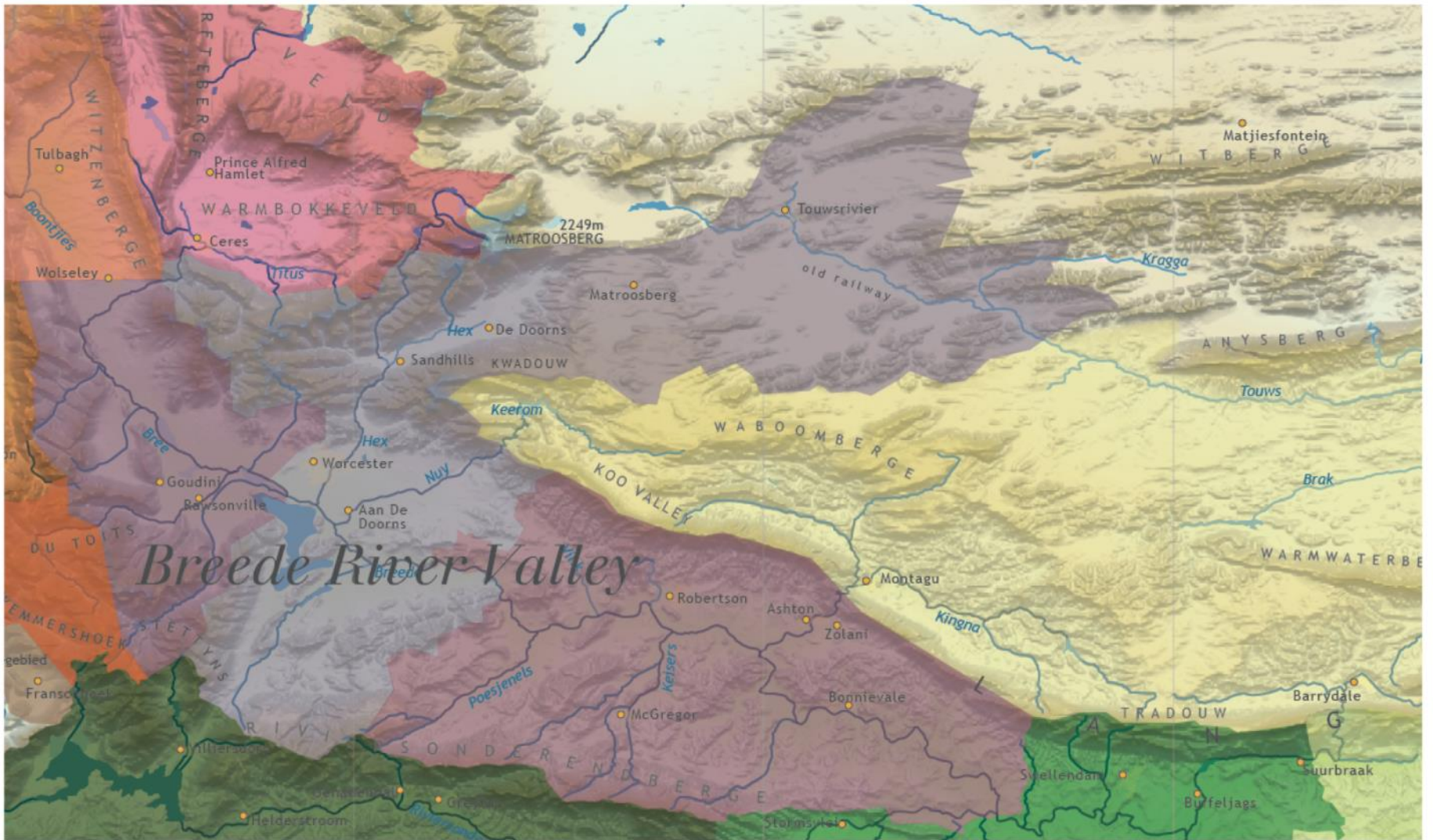




Stellenbosch



Franschhoek Valley



Breede River Valley

Robertson





Its lime-rich soils make the area eminently suitable for racehorse stud farming and also, of course, for winegrowing. Many of the farms have been owned by the same family for generations.

# Graham Beck Brut Rosé NV

60% Chardonnay, 40% Pinot Noir

Fermented separately

Color obtained by enzymatic action during transport

Time on lees ~15 months

*Alc: 12.36% RS: 10.58 g/L TA: 6.34 g/L pH: 3.16*

# Review: Methode Cap Classique

All varieties permitted, but Chardonnay, Chenin Blanc, and Pinot Noir dominate

Whole bunch pressing preferred

Dosage indications conform to int'l standards

Minimum 12 months on lees; going to 15 months in 2018

Minimum 3 bars of pressure



Wines of  
**South  
Africa**

welcome to our world of discovery

---



/WOSAUS

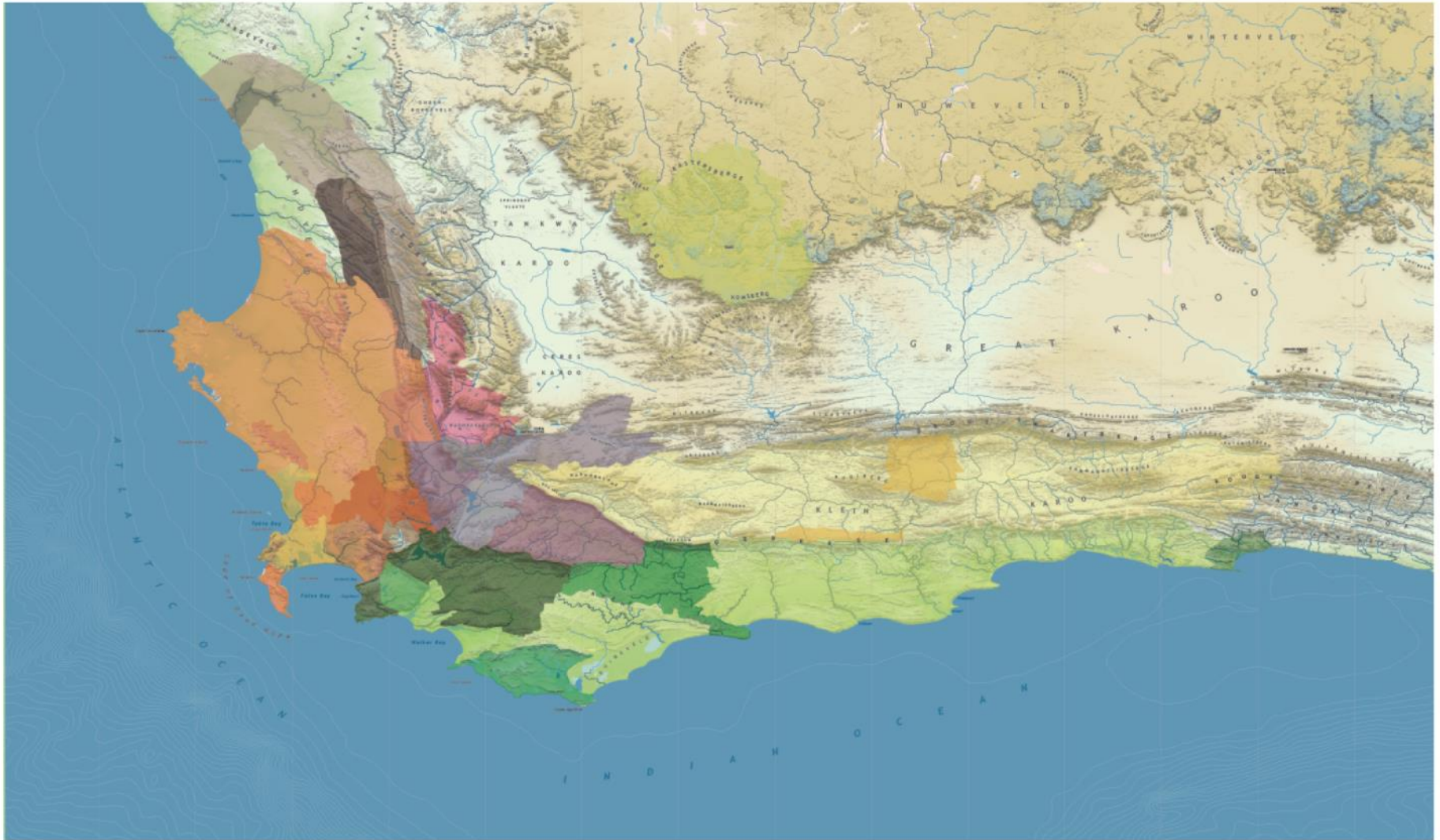


@WOSA\_USA



@WOSA\_USA

#drinkSA



Our winelands are located at the very tip of South Africa.



Coastal Region

Paarl



Paarl