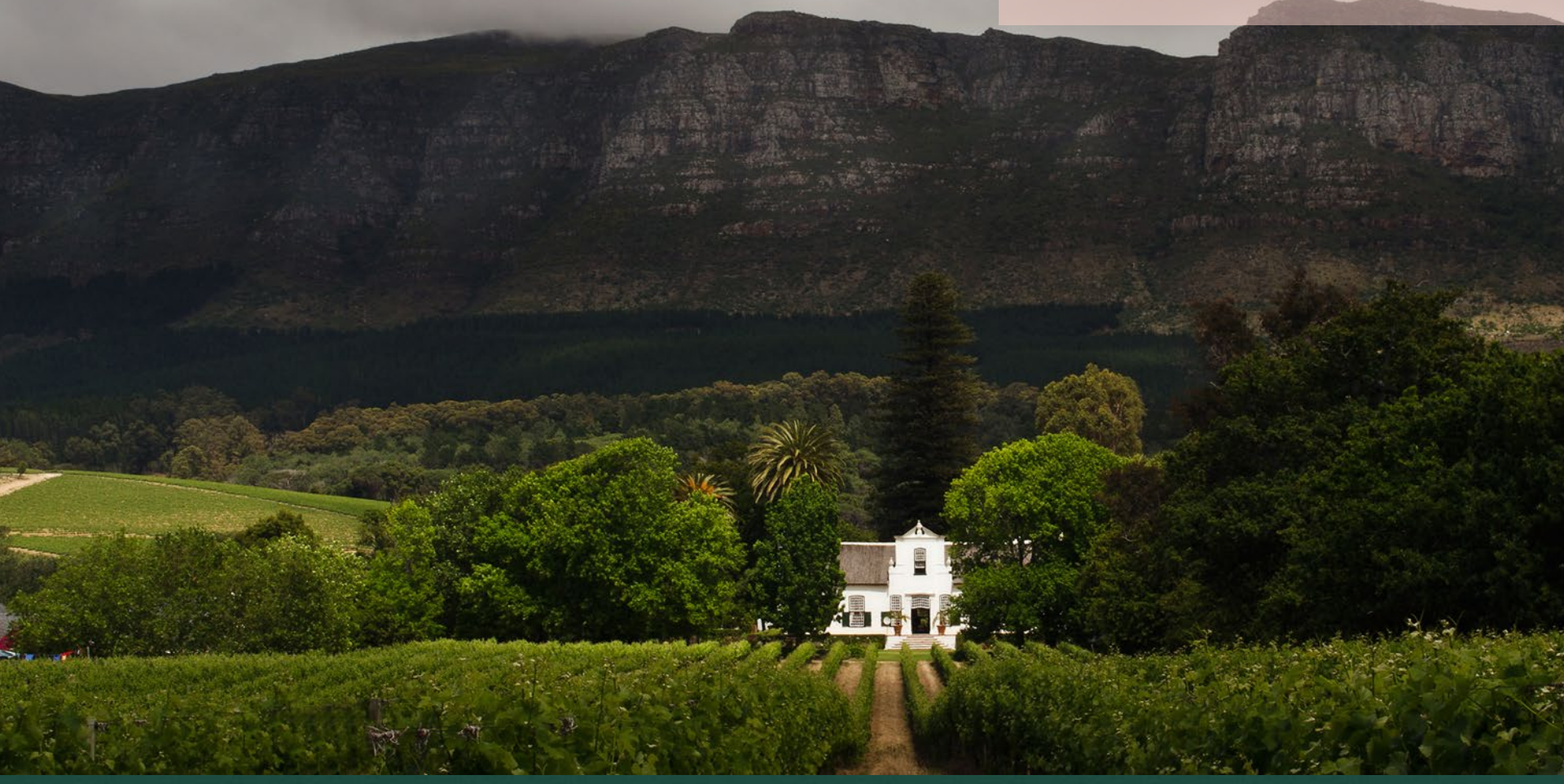


Certification Summit:

South Africa's Coastal Region

Handout – Part 2



Taste-along:

Kaapzicht Winery Chenin Blanc, Stellenbosch 2018



Kaapzicht

Wine Estate

STELLENBOSCH

Legend:

- National Roads
- Trunk roads
- Primary roads
- Secondary roads
- Gravel Roads
- Railways
- Collars
- Mountains
- District boundaries
- Ward boundaries
- Menwido

Scale: 0 1.5 3 4.5 6 km

Kaapzicht Winery

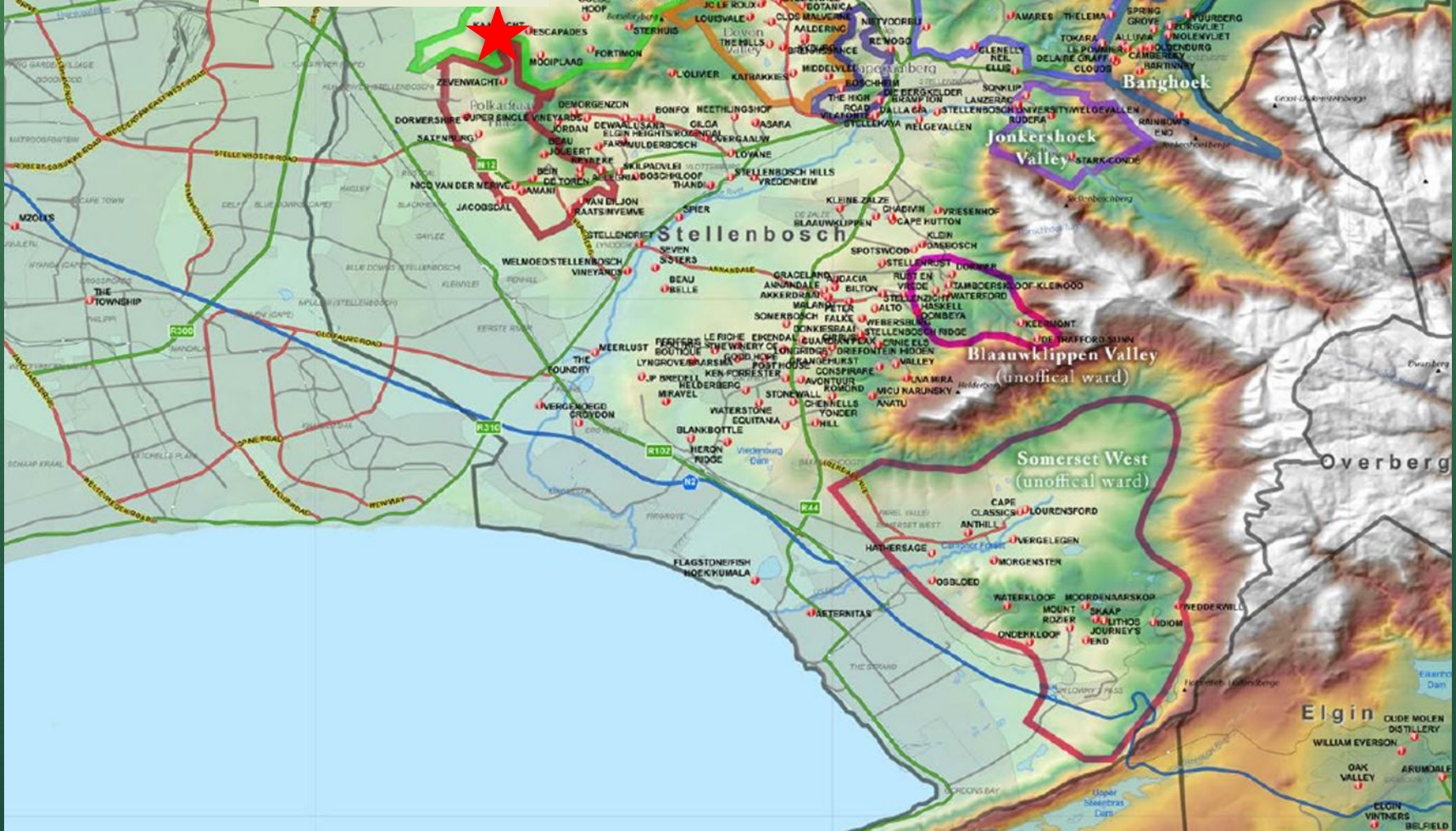




Photo via: www.kaapzicht.co.za

Here are my tasting notes for Kaapzicht Winery Chenin Blanc, Stellenbosch 2018

- 100% Chenin Blanc
- 8-10 hours skin contact
- 3 months lees aging
- 13.3% abv
- Aromas: Pear, pineapple, peach, apricot, citrus, mineral, biscuit (lees), floral
- Palate: Fruity (hint of RS), crisp, "waxy" mouthfeel
- Flavors: Melon, grapefruit, peach
- Finish: Clean, lingering, mineral



Stellebosch District

as part of South Africa's Coastal Region in the Western Cape Geographic Unit



Stellenbosch is the second-oldest wine growing region in South Africa (after Constantia)



Photo of Old Rhenish Mission Church by Raymond Ellis vis Wikimedia Commons

Eikestad – the City of Oaks



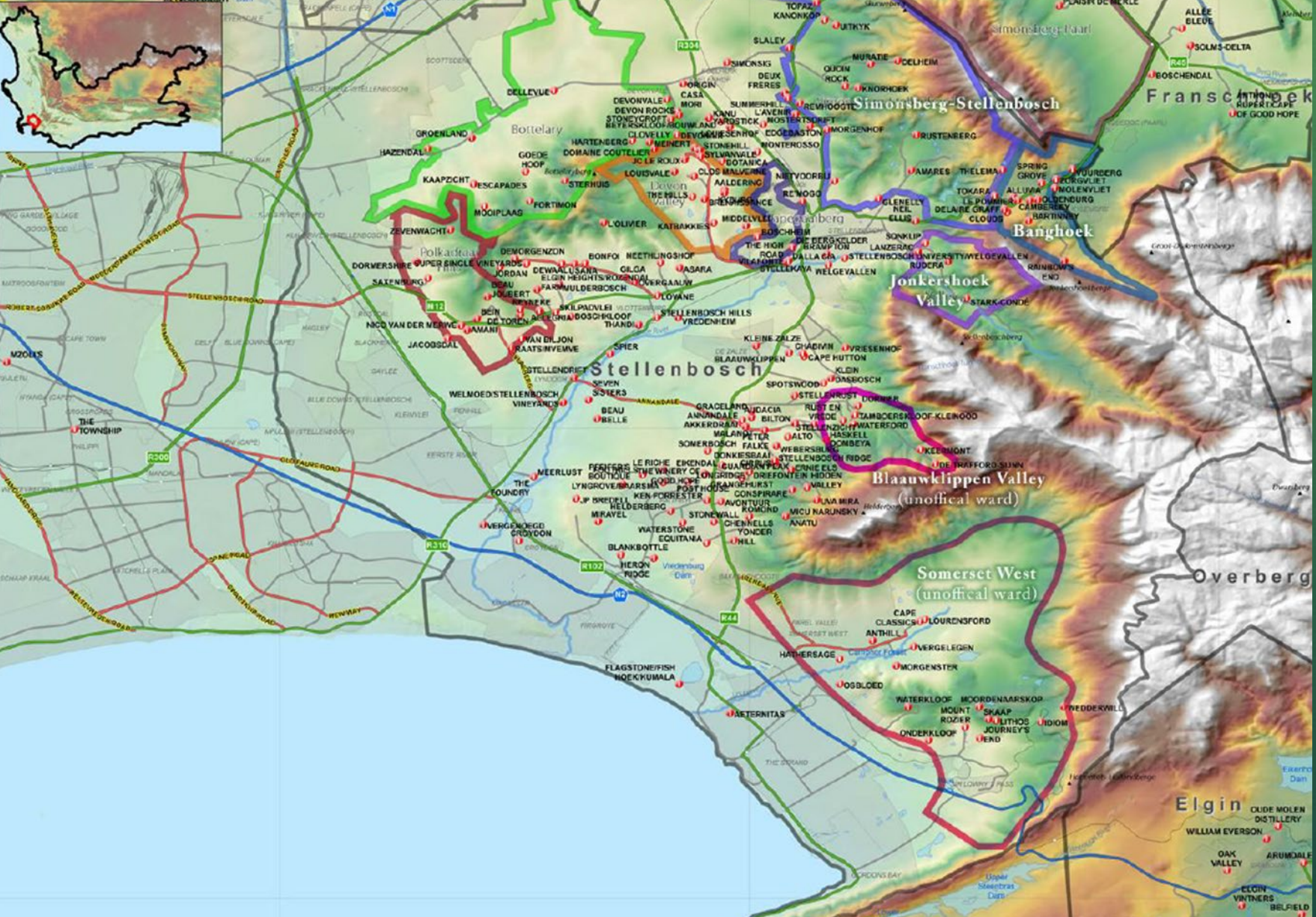

Photo via: www.winetourismza.blogspot.com

STELLENBOSCH

Legend

- National Roads (Blue line)
- Trunk roads (Green line)
- Primary roads (Red line)
- Secondary roads (Grey line)
- Gravel Roads (Brown line)
- Railways (Black line)
- Collars (Red circle)
- Mountains (Brown triangle)
- District boundaries (Black outline)
- Ward boundaries (Red outline)

Scale: 0 1.5 3 4.5 6 km

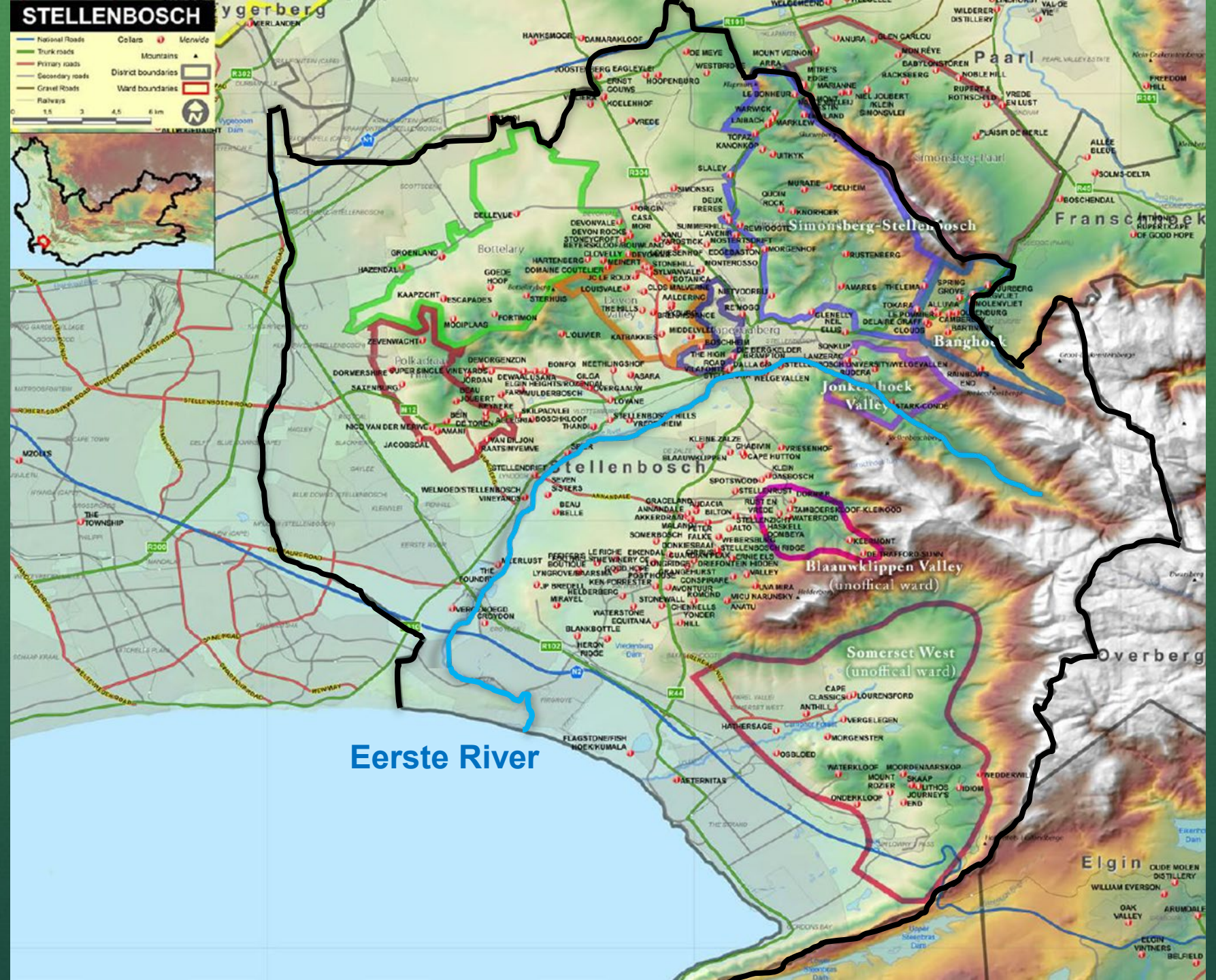


STELLENBOSCH

Legend

- National Roads
- Trunk roads
- Primary roads
- Secondary roads
- Gravel Roads
- Railways
- Collars
- Mountains
- District boundaries
- Ward boundaries
- Menvide

Scale: 0 1.5 3 4.5 6 km



Eerste River

The Eerste River – on the Spier Wine Estate



STELLENBOSCH

Legend

- National Roads
- Trunk roads
- Primary roads
- Secondary roads
- Gravel Roads
- Railways
- Collars
- Mountains
- District boundaries
- Ward boundaries
- Menvide

Scale: 0 1.5 3 4.5 6 km



Paarl

Simonsberg

Franschoek

Jonkershoekberg

Stellenboschberg

Blaauwklippen Valley (Part of the Hottentots Holland Mountains)

Helderberg

Elgin

False Bay

Stellenbosch Climate:
Overall—Mediterranean

Hot, dry summers
Cool, wet winters



Soils:
Sandstone
Granite
Clay
Alluvial

Breezy near the coast
Mountainous interior

Stellenbosch has the most plantings
of any wine district in South Africa



39,317 acres/
15,911 ha

16.14%
of the country's total

Stellenbosch – Red Grapes: 63%



Stellenbosch – White Grapes: 37%

**Sauvignon
Blanc
17%**



**Chenin Blanc
9%**



**Chardonnay
8%**



**Other white
4%**

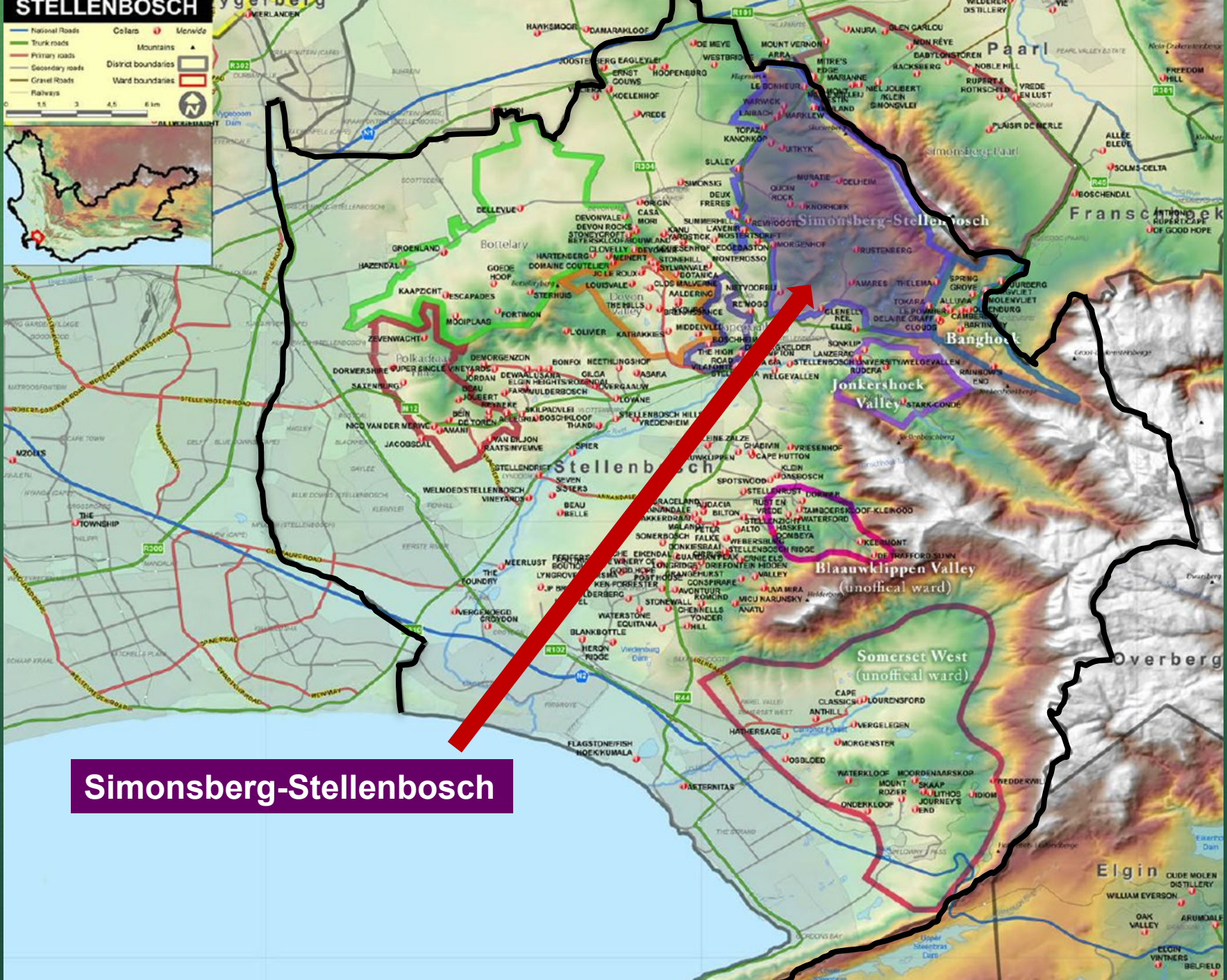


STELLENBOSCH

Legend

- National Roads
- Trunk roads
- Primary roads
- Secondary roads
- Gravel Roads
- Railways
- Collars
- Mountains
- District boundaries
- Ward boundaries
- Menside

Scale: 0 1.5 3 4.5 6 km



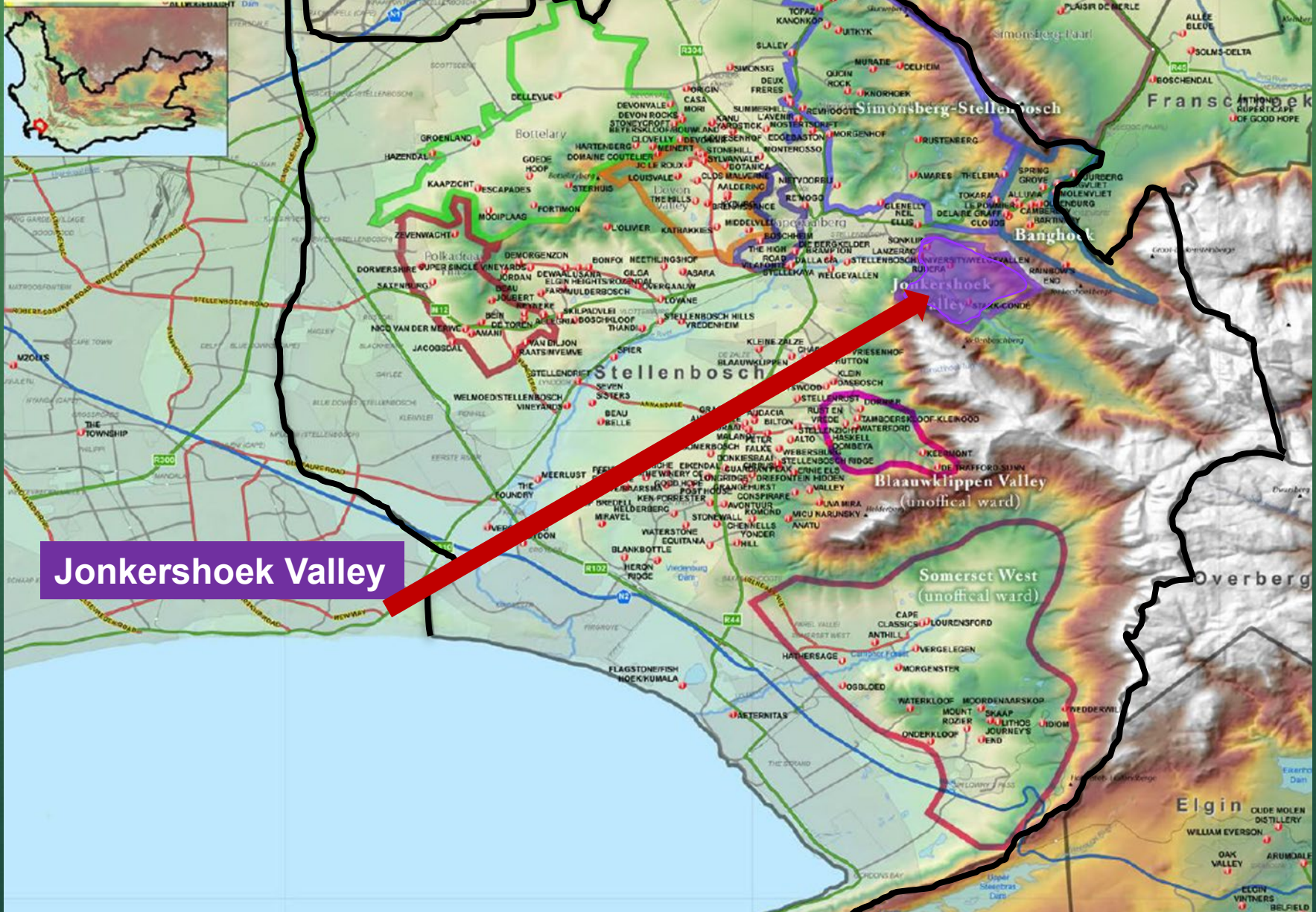
Simonsberg-Stellenbosch

STELLENBOSCH

Legend:

- National Roads
- Trunk roads
- Primary roads
- Secondary roads
- Gravel Roads
- Railways
- Collars
- Mountains
- District boundaries
- Ward boundaries
- Menvide

Scale: 0 1.5 3 4.5 6 km



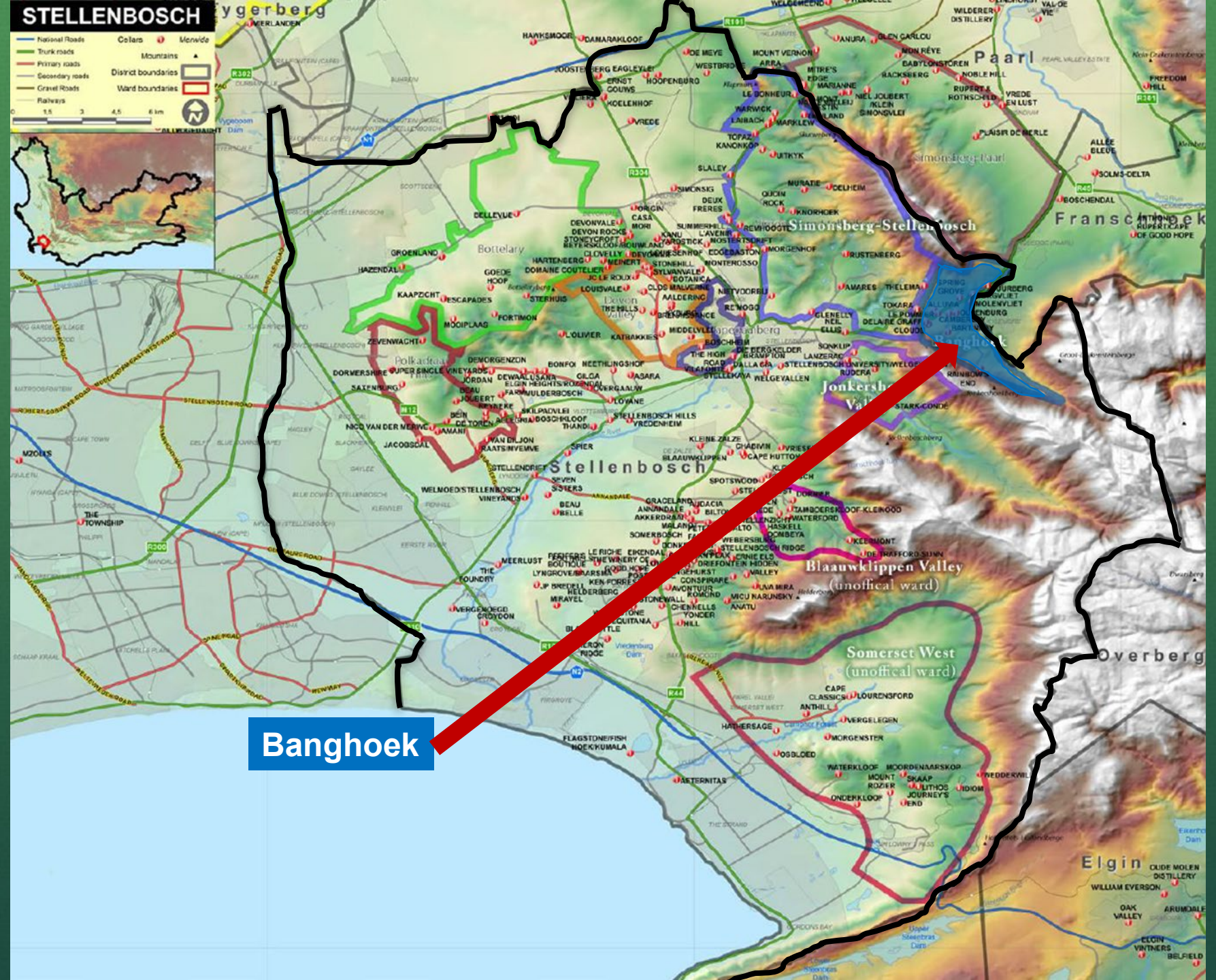
Jonkershoek Valley

STELLENBOSCH

Legend:

- National Roads
- Trunk roads
- Primary roads
- Secondary roads
- Gravel Roads
- Railways
- Collars
- Mountains
- District boundaries
- Ward boundaries
- Menvide

Scale: 0 1.5 3 4.5 6 km



Banghoek

STELLENBOSCH

Legend:

- National Roads
- Trunk roads
- Primary roads
- Secondary roads
- Gravel Roads
- Railways
- Collars
- Mountains
- District boundaries
- Ward boundaries
- Menwide

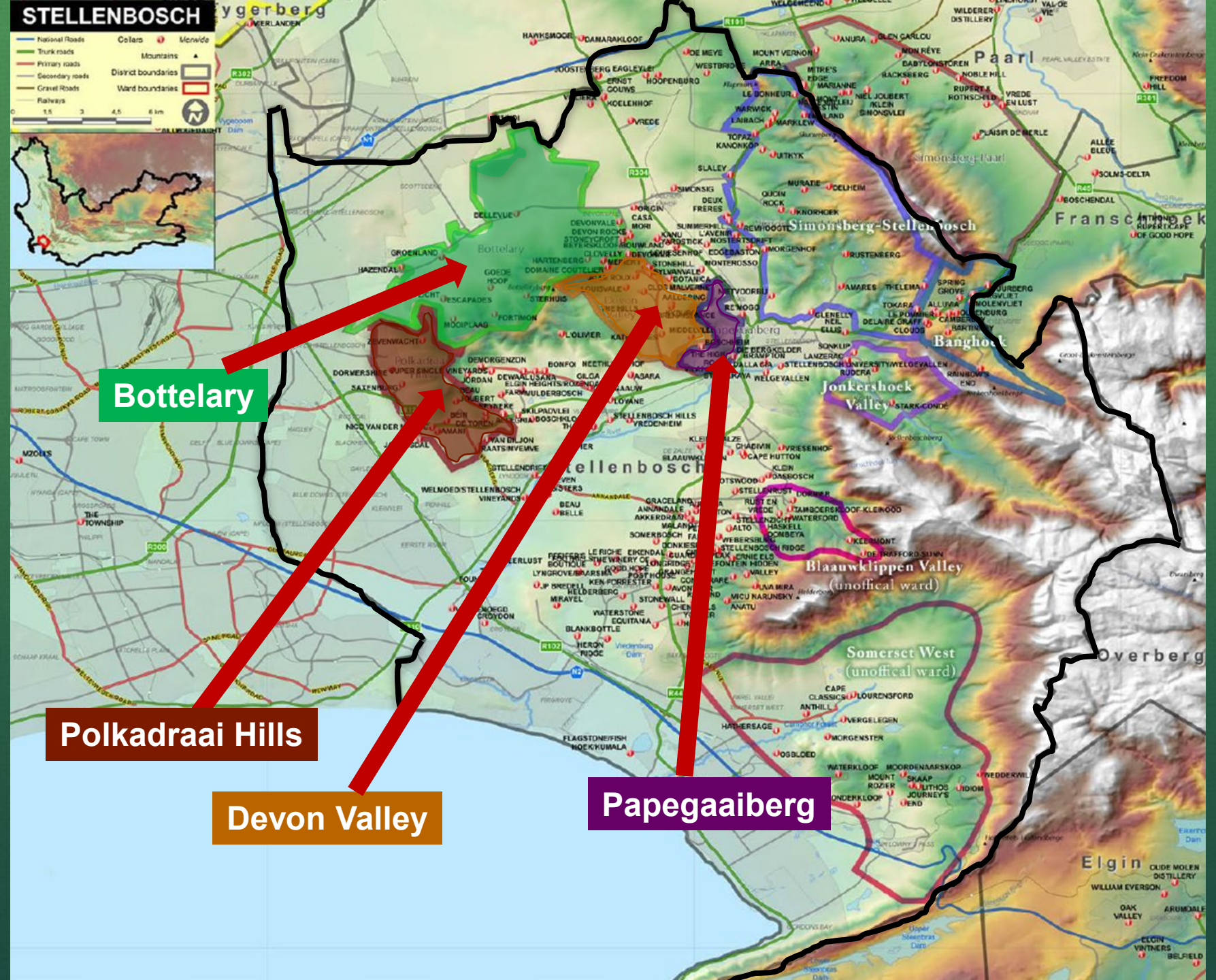
Scale: 0 1.5 3 4.5 6 km

Bottelary

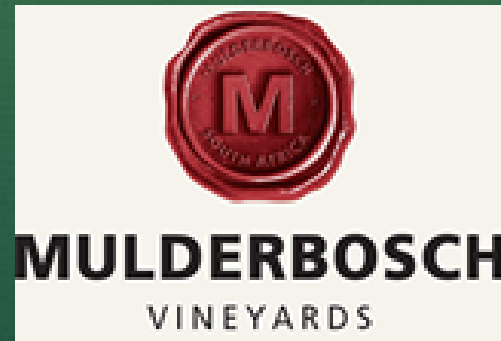
Polkadraai Hills

Devon Valley

Papegaaiberg



Leading producers in Stellenbosch include:



Any questions

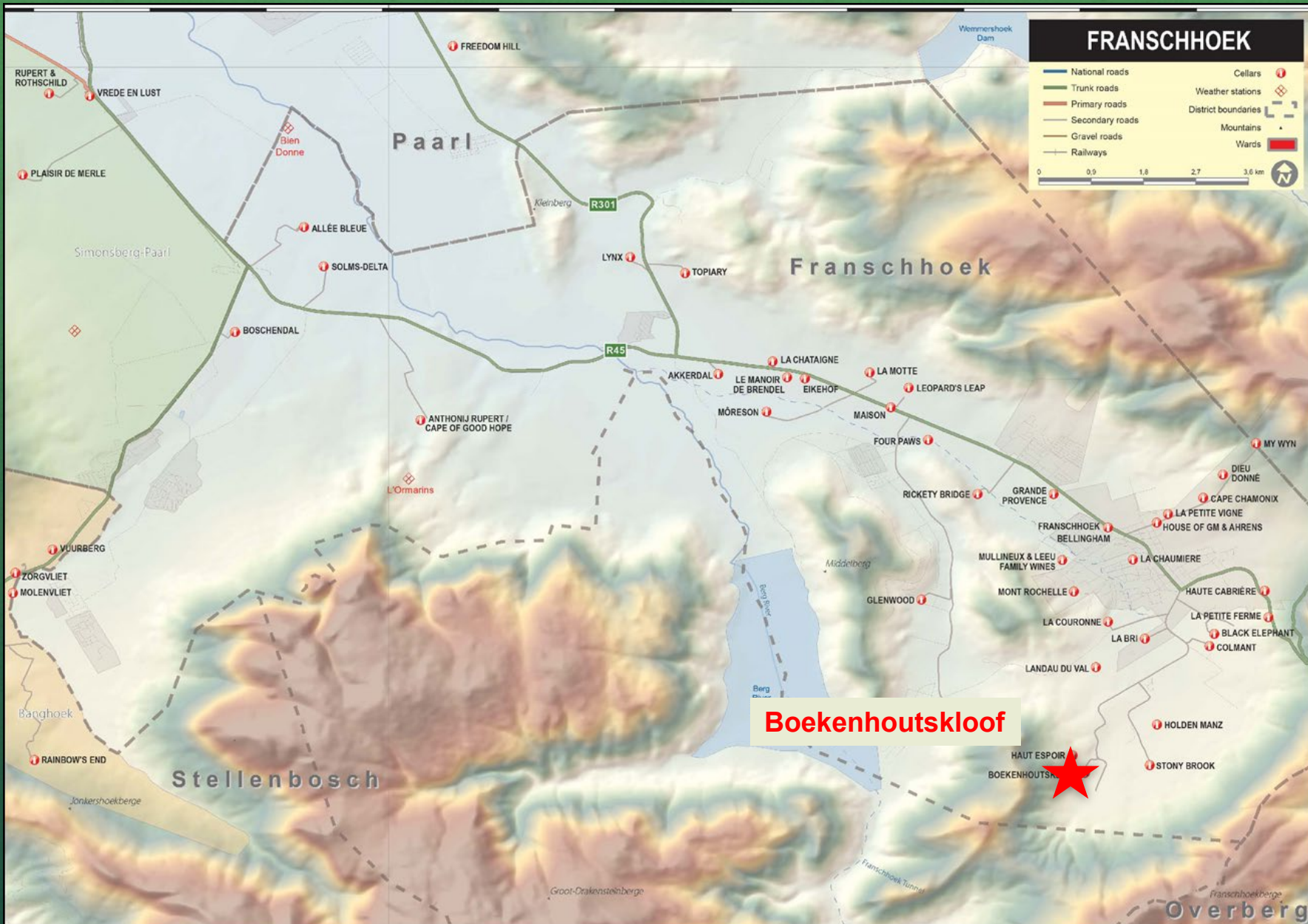


Taste-along:

Boekenhoutskloof Chocolate Block 2017



BOEKENHOUTSKLOOF





The ravine of the Boekenhout
(Cape Beech Tree)



Here are my tasting notes for Boekenhoutskloof Chocolate Block 2017

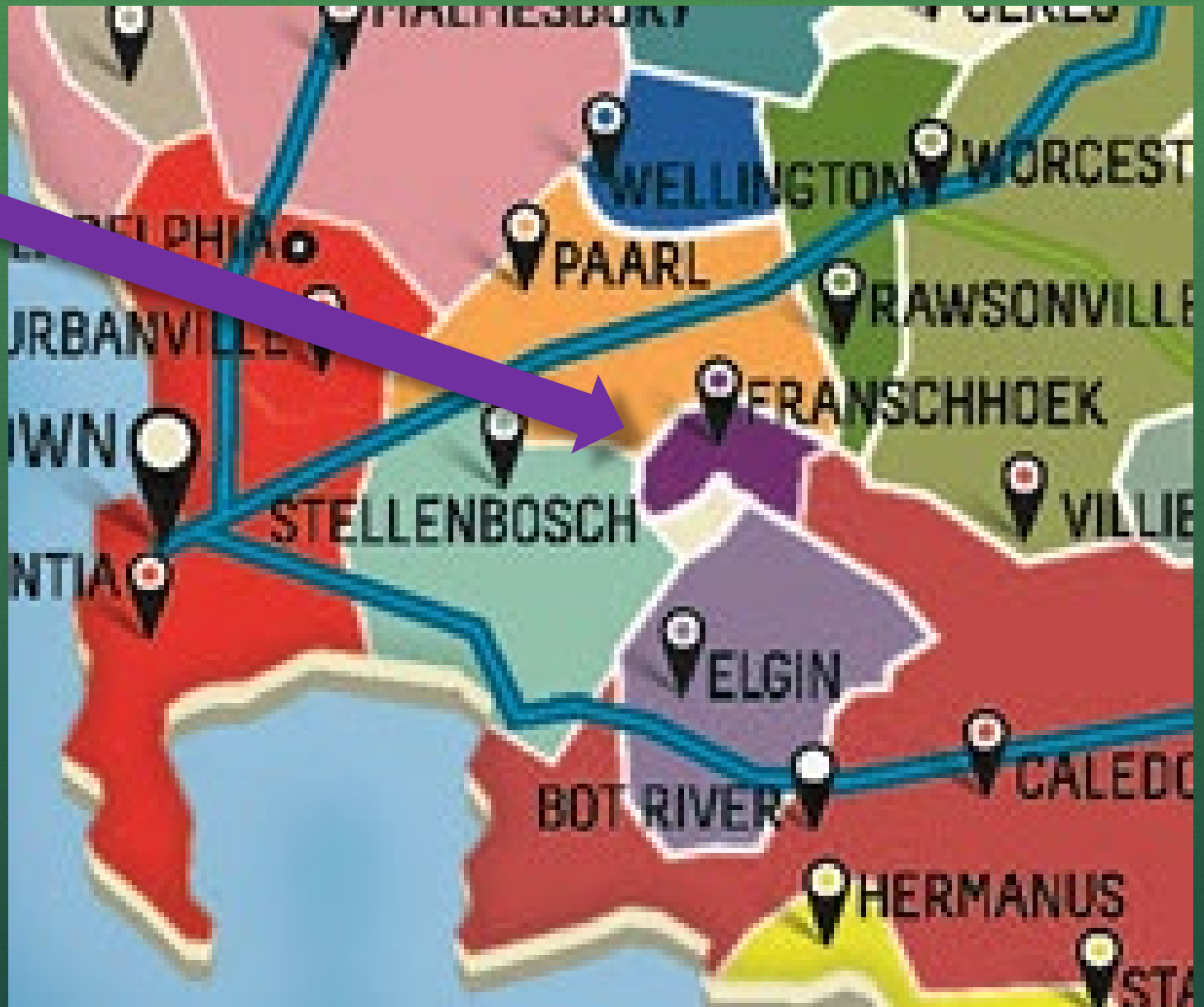
- Red Blend:** 64% Syrah, 14% Grenache, 11% Cinsault, 10% Cabernet Sauvignon, 1% Viognier
- 14.76%abv
- Aromas:** Dark berries, cocoa, lavender, red current, cedar, bramble
- Palate:** Rich, velvety
- Flavors:** Blackberry, blueberry, black pepper
- Finish:** Lingering and rich



The background features a stylized mountain range in shades of green, with a jagged, torn-paper-like edge separating the top green section from the bottom yellow section.

Franschhoek Valley District

as part of South Africa's Coastal Region in the Western Cape Geographic Unit

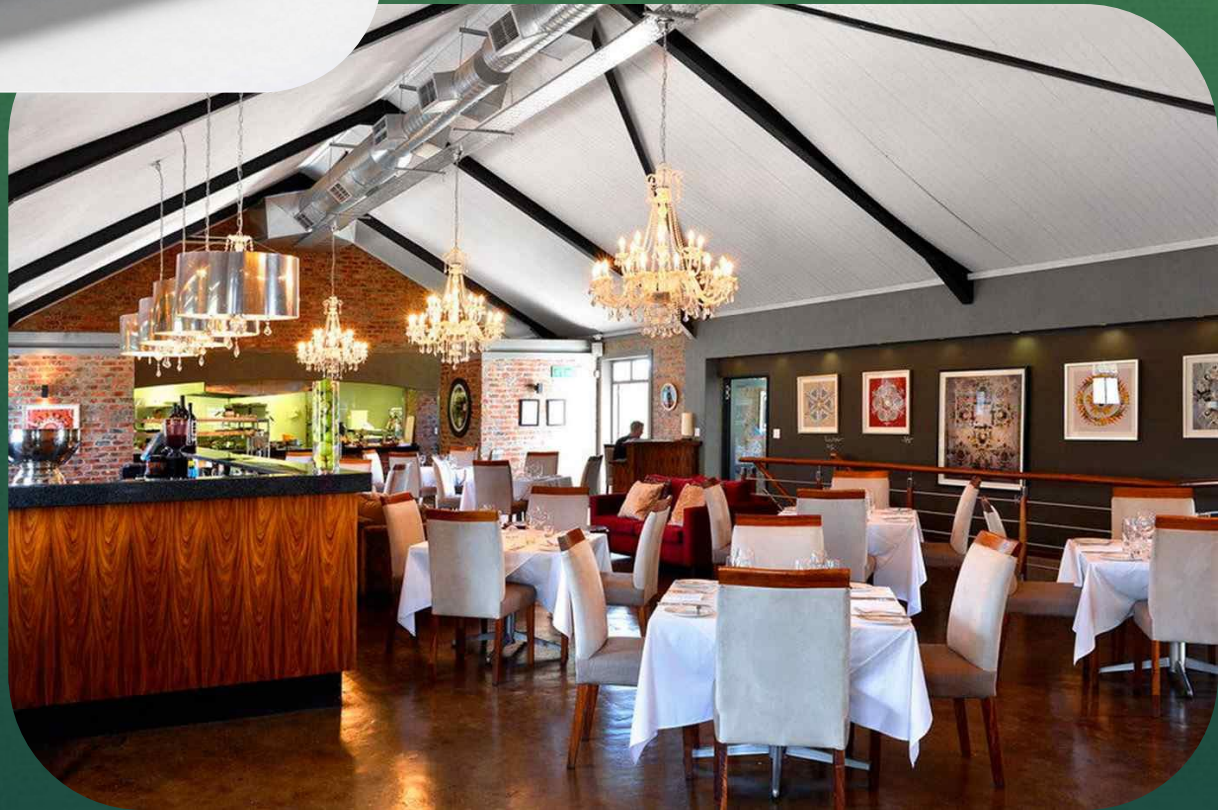


The area was originally inhabited by the Khoisan people, and—beginning in 1688—was settled by French Huguenots



Photo of the Huguenot Memorial by Janet Szymanowski via Wikimedia Commons

The Franschoek Kitchen @ Holden Manz

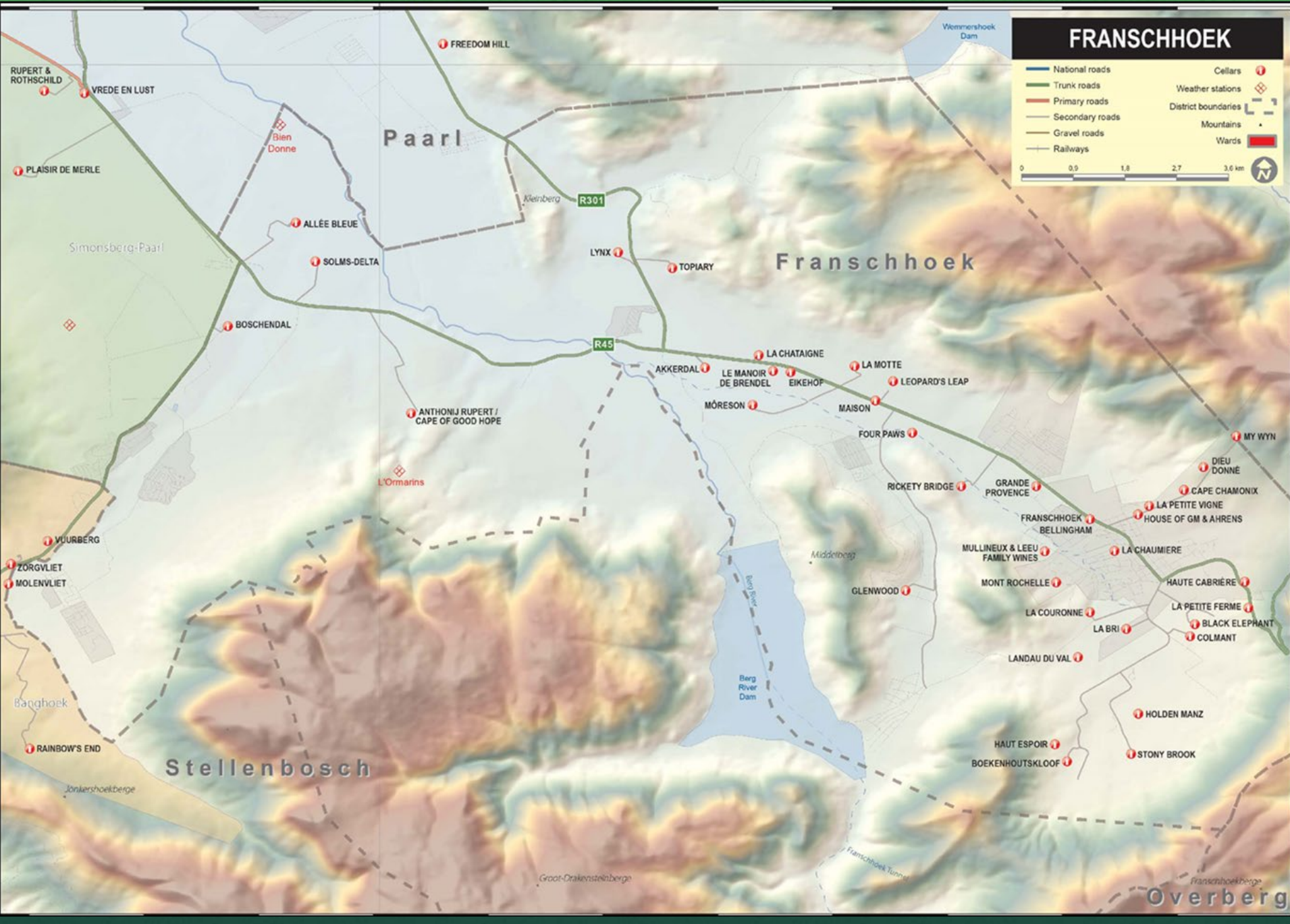


Photos via: <http://holdenmanz.com/>

FRANSCHHOEK

National roads	Cellars
Trunk roads	Weather stations
Primary roads	District boundaries
Secondary roads	Mountains
Gravel roads	Wards
Railways	

0 0,5 1,8 2,7 3,6 km



FRANSCHHOEK

National roads	Cellars
Trunk roads	Weather stations
Primary roads	District boundaries
Secondary roads	Mountains
Gravel roads	Wards
Railways	

0 0.9 1.8 2.7 3.6 km

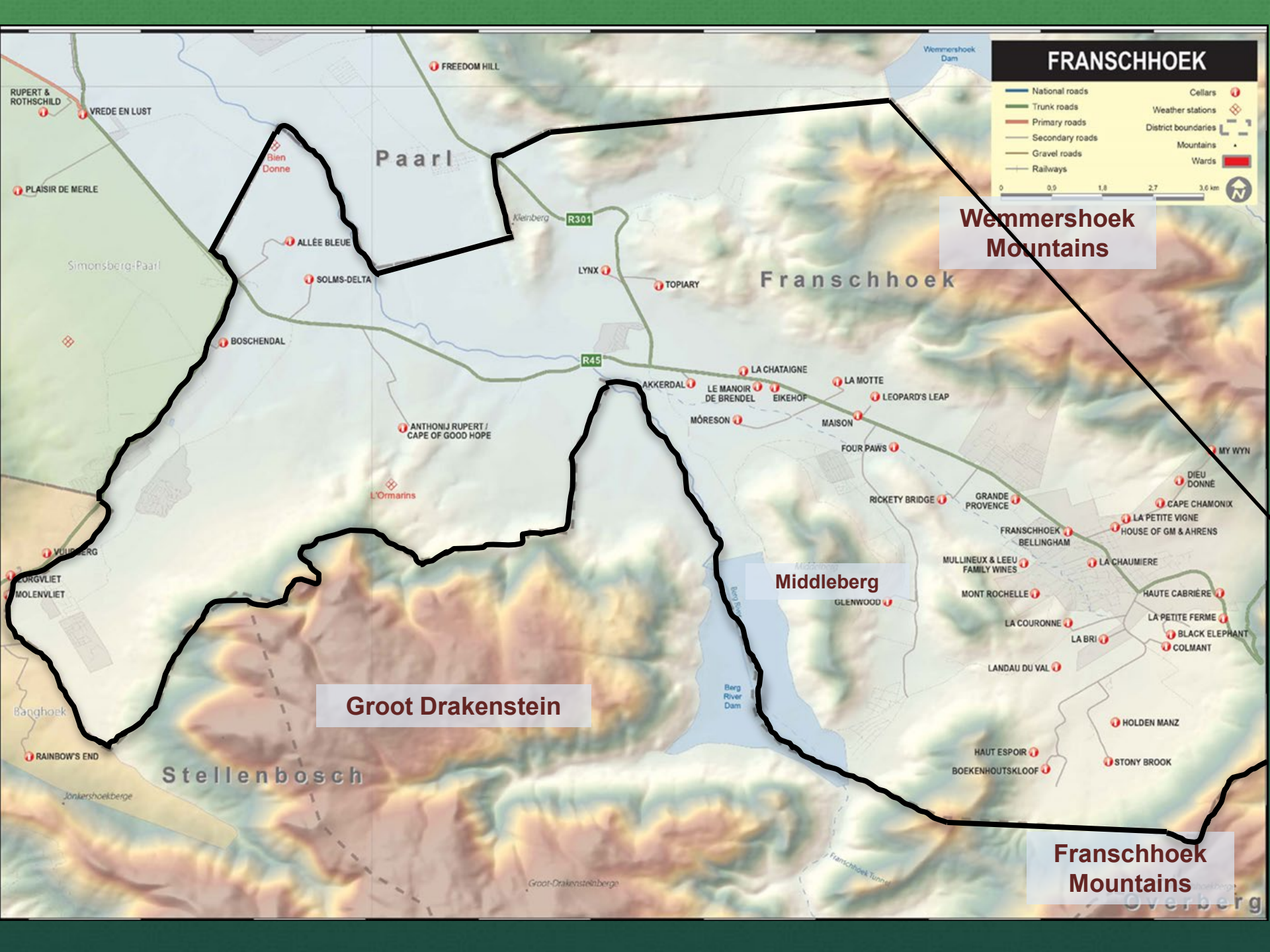
Wemmershoek Mountains

Franschhoek

Middleberg

Groot Drakenstein

Franschhoek Mountains



FRANSCHHOEK

National roads	Cellars
Trunk roads	Weather stations
Primary roads	District boundaries
Secondary roads	Mountains
Gravel roads	Wards
Railways	

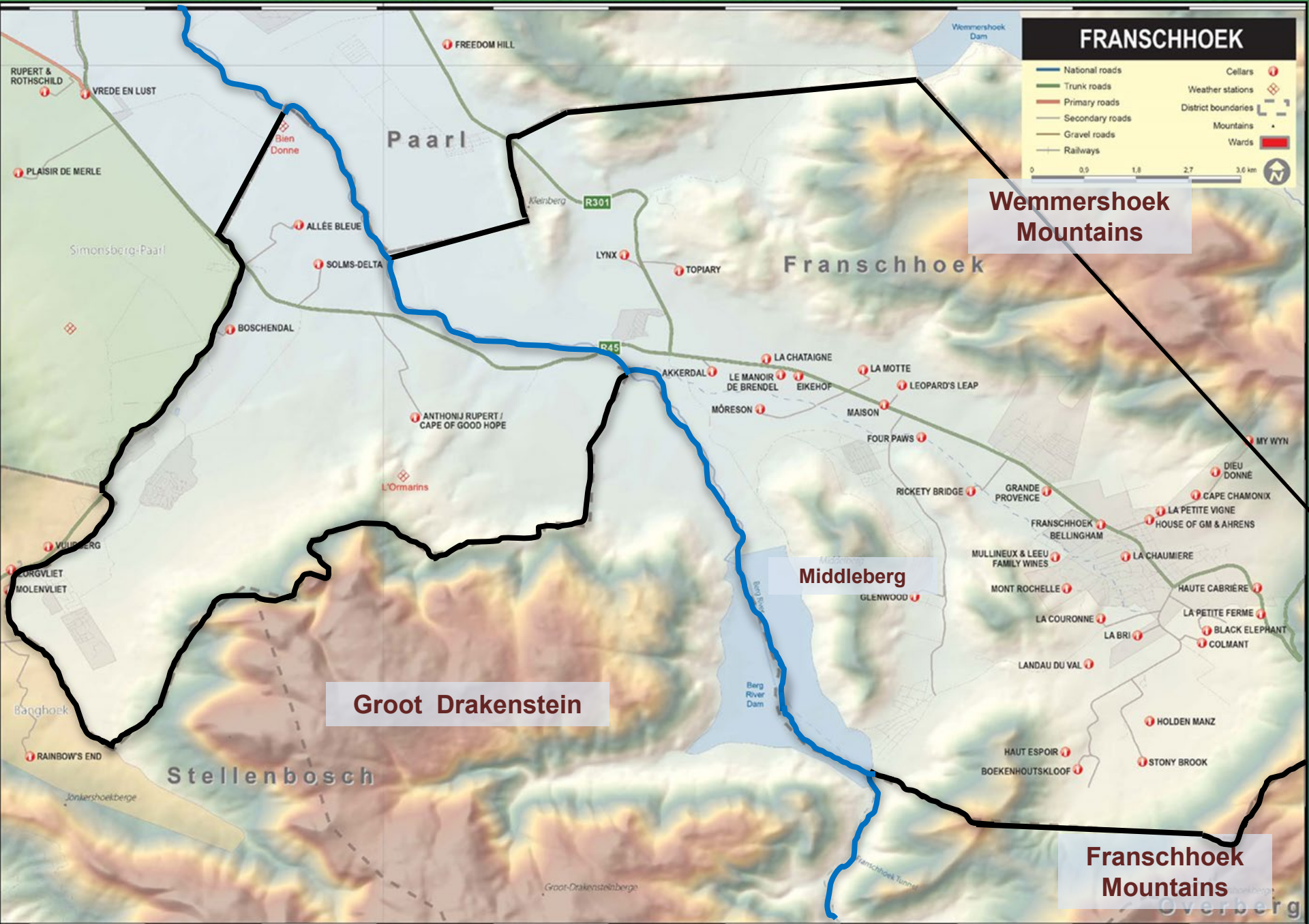
0 0.9 1.8 2.7 3.6 km

Wemmershoek Mountains

Groot Drakenstein

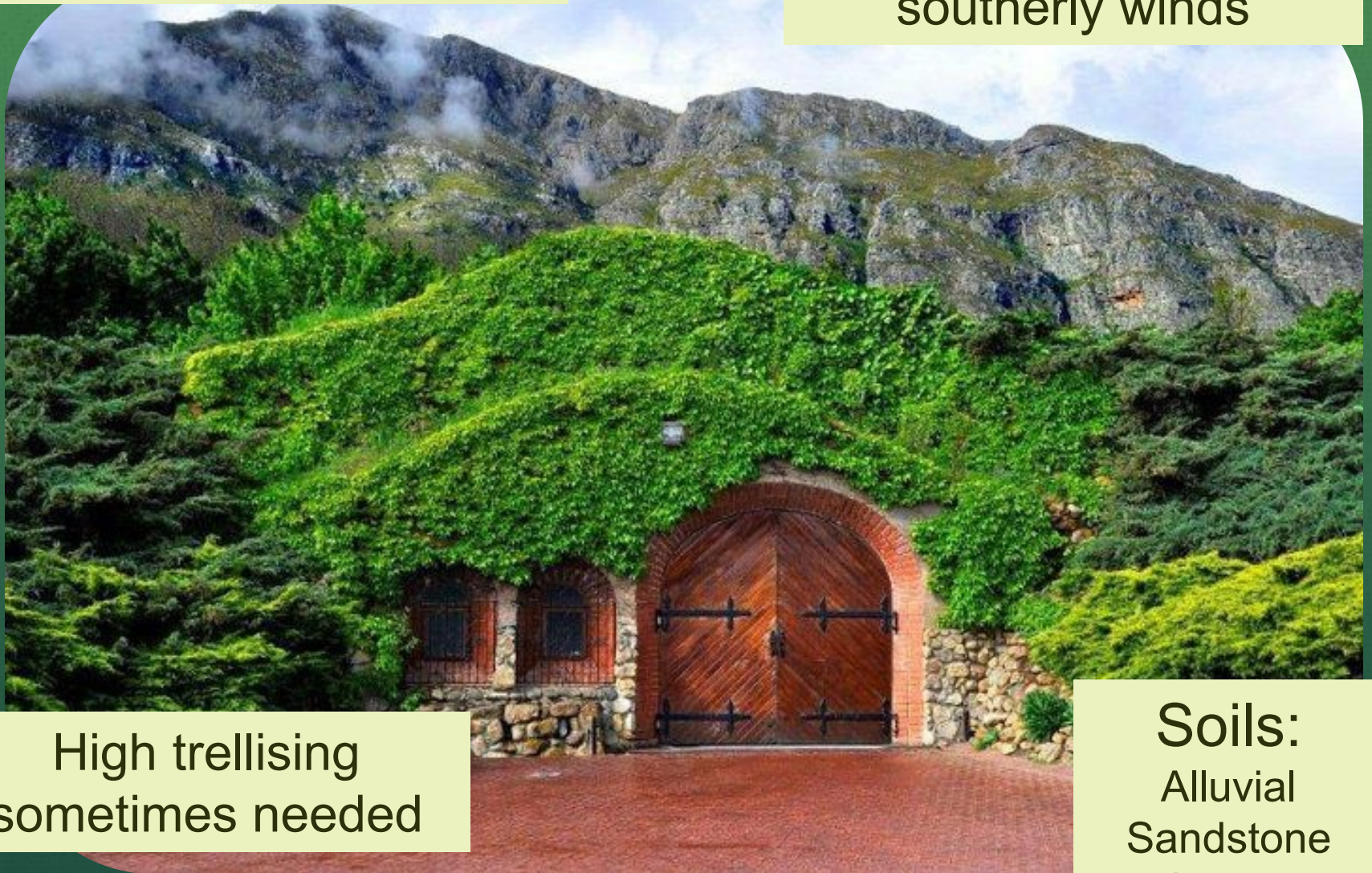
Middleberg

Franschhoek Mountains



Franshhoek Climate:
Warm Mediterranean

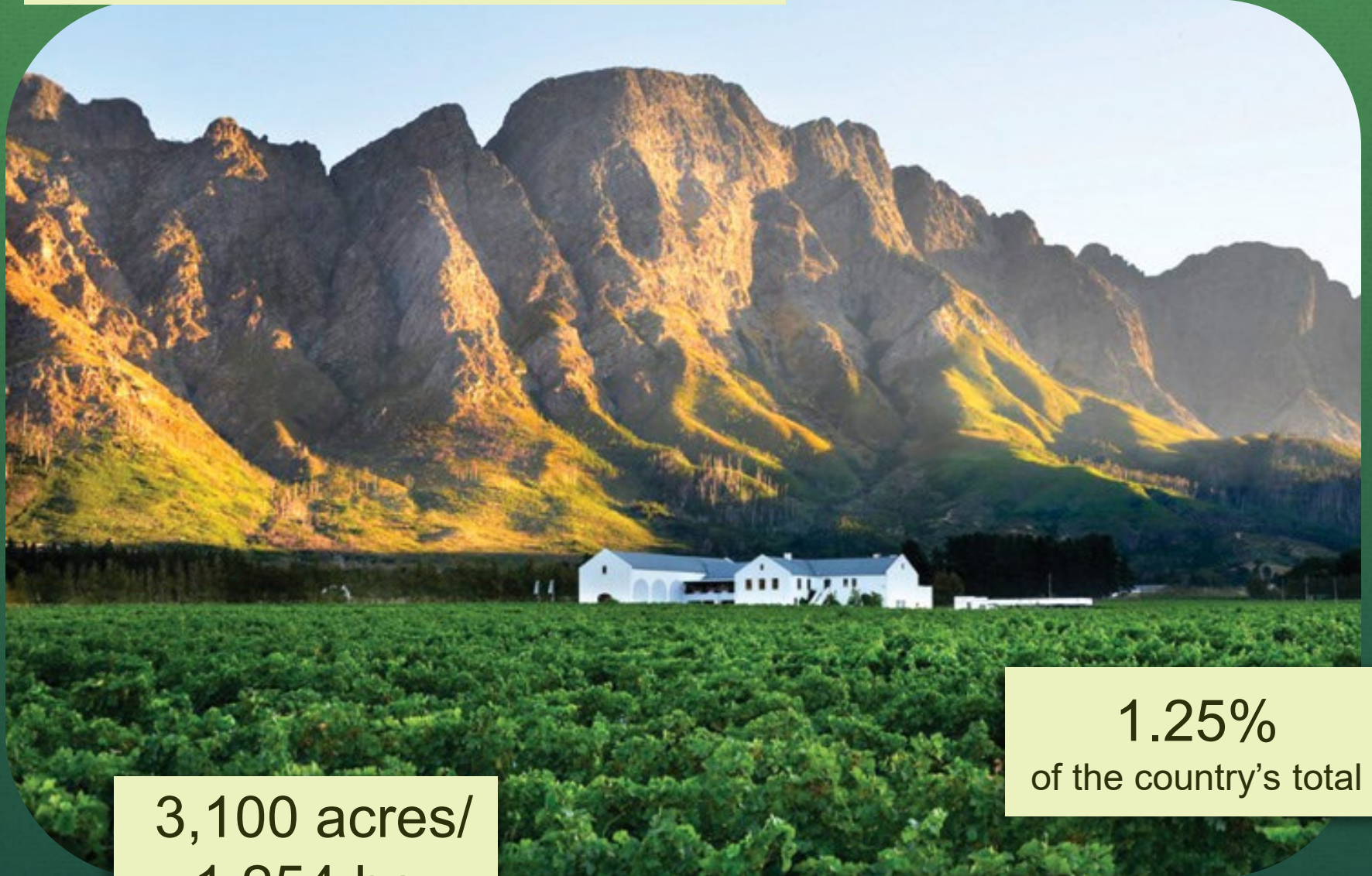
Mountains trap cool
southerly winds



High trellising
sometimes needed

Soils:
Alluvial
Sandstone
Granite

Franschhoek Valley



3,100 acres/
1,254 ha

1.25%
of the country's total

Franschhoek – Red Grapes: 55%



**Cabernet
Sauvignon
16%**



**Syrah
15%**



**Merlot
10%**



**Pinot Noir
6%**



**Other reds
2%**



**Cabernet Franc
2%**



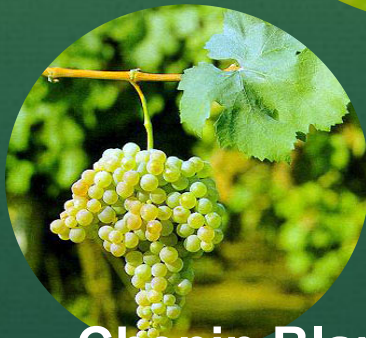
**Pinotage
3%**

Franschhoek – White Grapes: 45%

**Sauvignon
Blanc%**
15



Chardonnay
14%



Chenin Blanc
6%



Semillon
7%

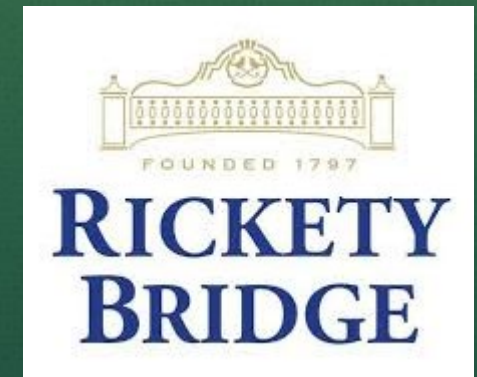


Other white
3%

Franschhoek is South Africa's leading area for *Méthode Cap Classique* (MCC), with more than 20 estates specializing in sparkling wine



Leading producers in Franshhoek include:



Any questions

