



Wines of
**South
Africa**

welcome to our world of discovery

WELCOME



South Africa ranks as eighth in the overall volume production of wine and produces 4.1% of the world's wine (2017)

WINEGROWING AREAS OF SOUTH AFRICA

WESTERN CAPE

COASTAL REGION Districts:

- SWARTLAND
- STELLENBOSCH
- CAPE TOWN
- TULBAGH
- PAARL
- FRANSCHHOEK VALLEY
- DARLING
- WELLINGTON

KLEIN KAROO Districts:

- CALITZDORP
- LANGEBERG-GARCIA

CAPE SOUTH COAST Districts:

- OVERBERG
- WALKER BAY
- SWELLENDAM
- CAPE AGULHAS
- PLETTENBERG BAY
- ELGIN

OLIFANTS RIVER Districts:

- LUTZVILLE VALLEY
- CITRUSDAL VALLEY
- CITRUSDAL MOUNTAIN

BREEDER RIVER VALLEY Districts:

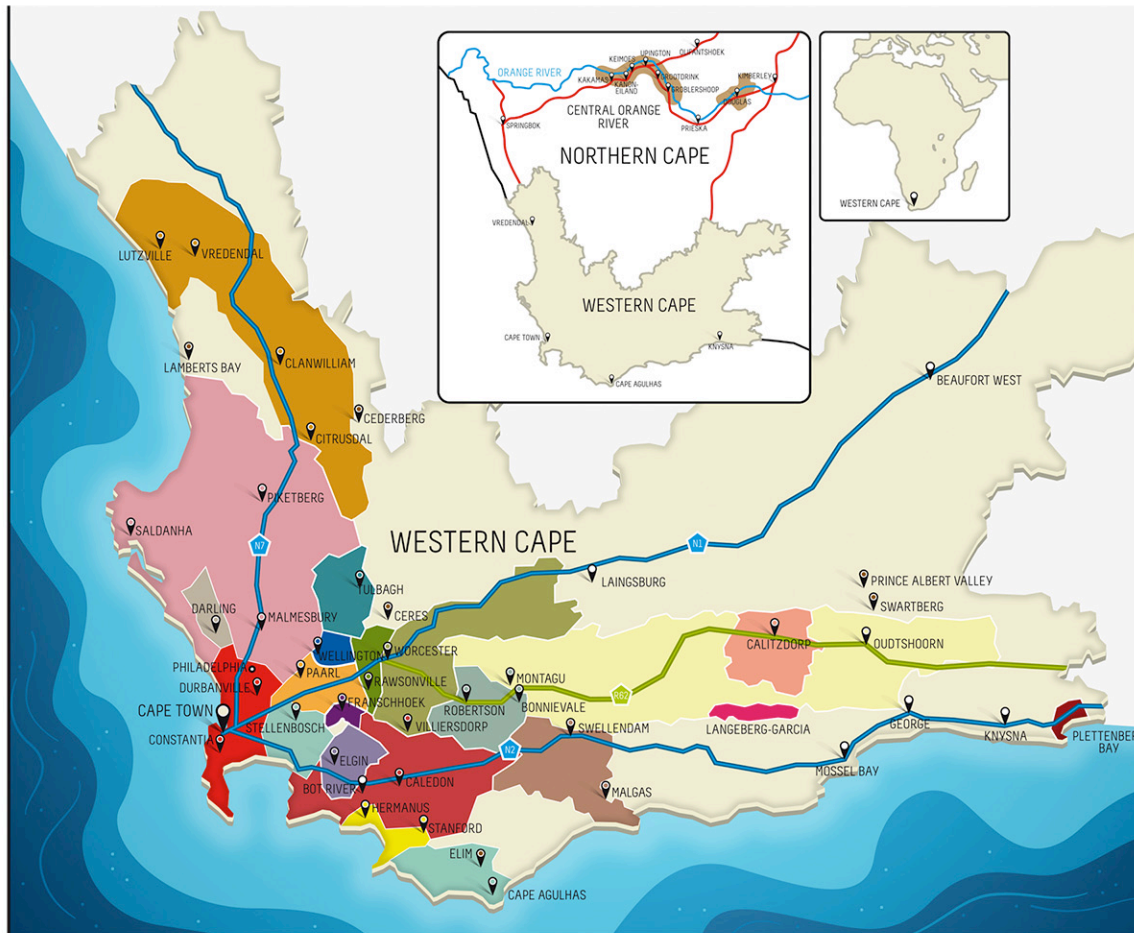
- BREEDEKLOOF
- WORCESTER
- ROBERTSON

WARDS NOT PART OF A REGION

- CERES
- CEDERBERG
- PRINCE ALBERT VALLEY
- SWARTBERG
- LAMBERTS BAY

NORTHERN CAPE

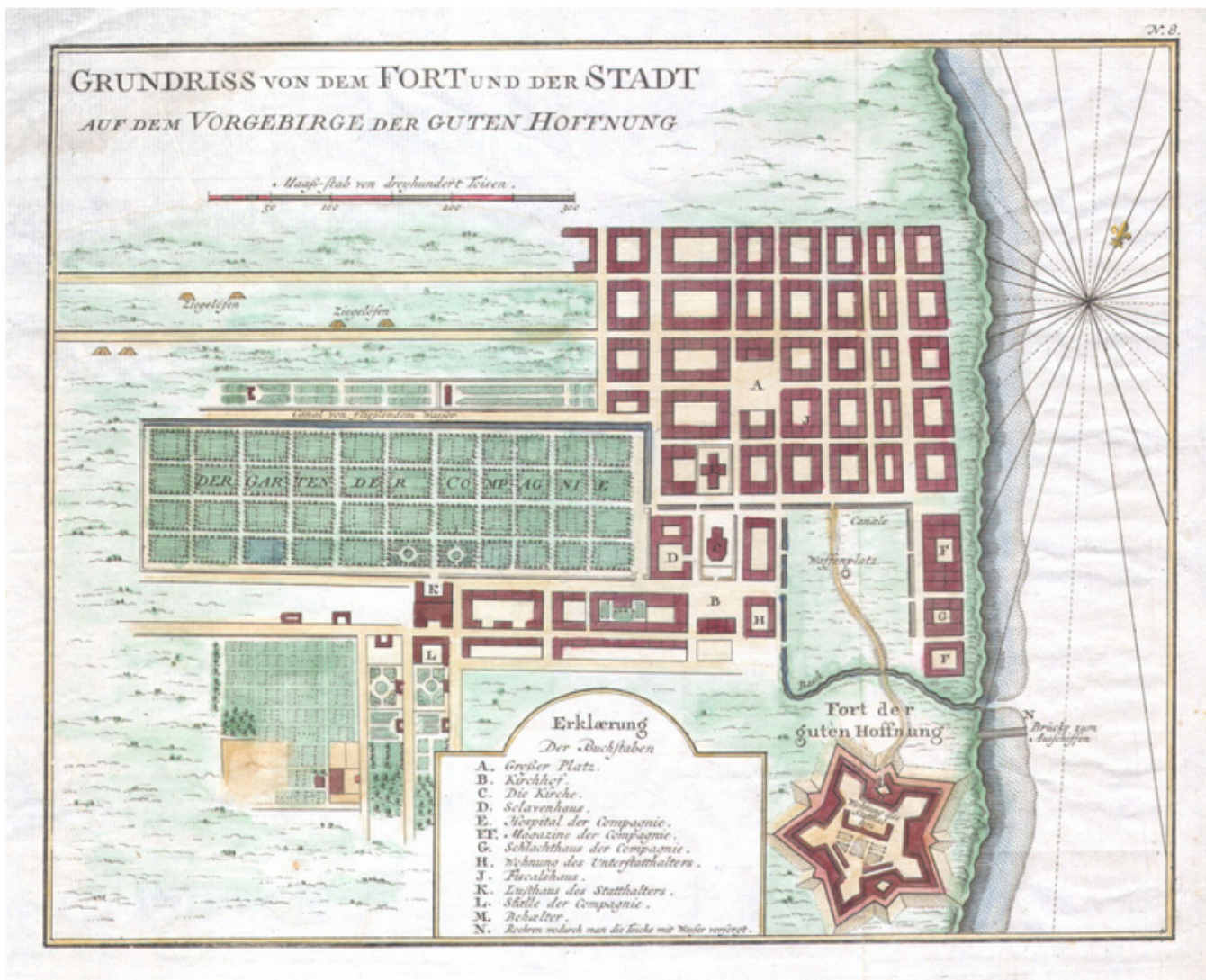
- CENTRAL ORANGE RIVER (Ward)



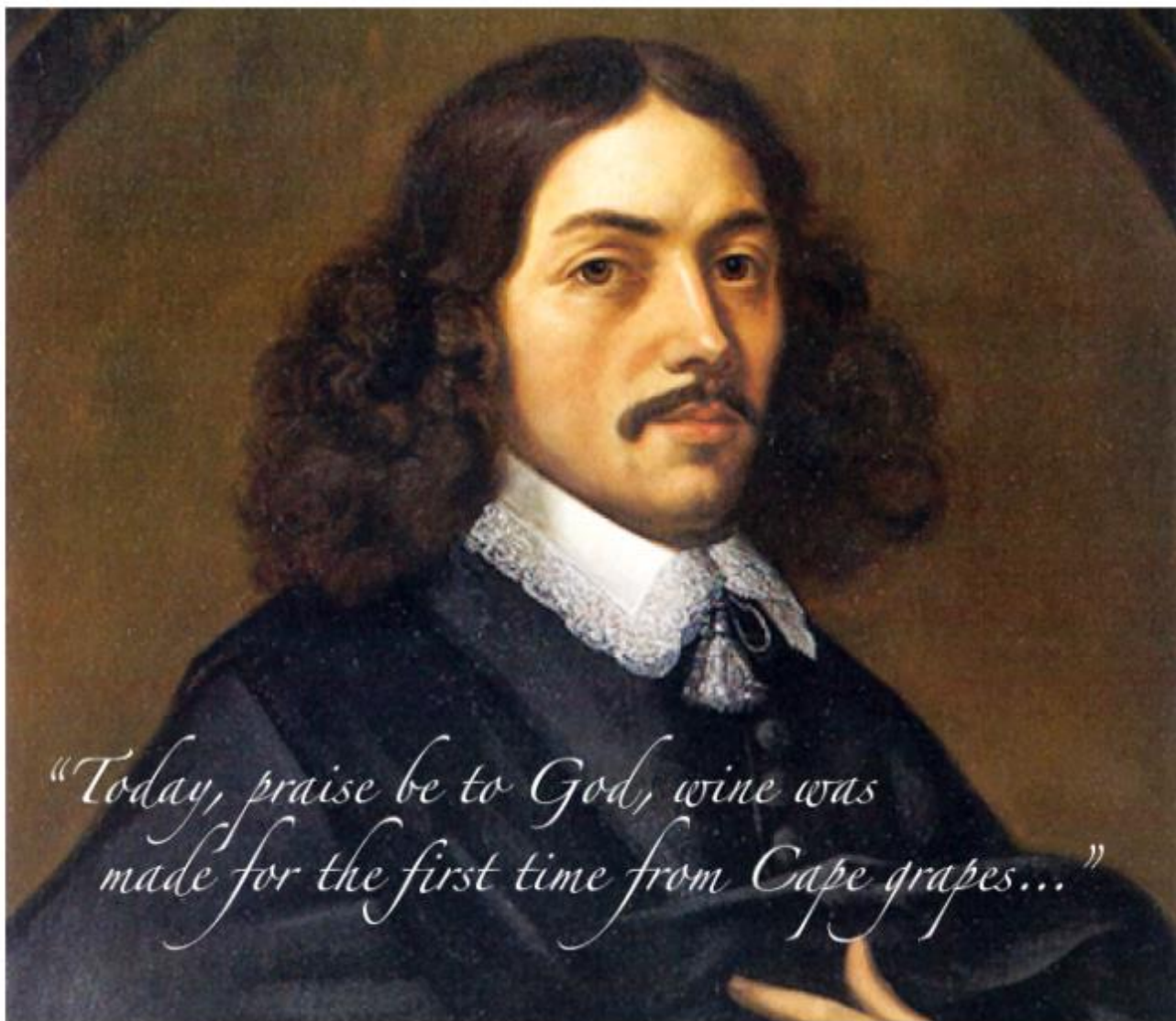
www.wosa.co.za



1652 – The Dutch East India Company established a refreshment station to provide for the ships en route to the spice trade in the East



1655 – Governor Jan van Riebeeck planted the first vines, imported from France, Spain and the Rhineland, in the Company Gardens



Jan van Riebeeck's famous diary entry of 2 February 1659



1688 – French Huguenots



Mid-1700s – Our wine was famous in the courts of Europe

WINEGROWING AREAS OF SOUTH AFRICA

WESTERN CAPE

COASTAL REGION Districts:

- SWARTLAND
- STELLENBOSCH
- CAPE TOWN
- TULBAGH
- PAARL
- FRANSCHHOEK VALLEY
- DARLING
- WELLINGTON

KLEIN KAROO Districts:

- CALITZDORP
- LANGEBERG-GARCIA

CAPE SOUTH COAST Districts:

- OVERBERG
- WALKER BAY
- SWELLENDAM
- CAPE AGULHAS
- PLETTENBERG BAY
- ELGIN

OLIFANTS RIVER Districts:

- LUTZVILLE VALLEY
- CITRUSDAL VALLEY
- CITRUSDAL MOUNTAIN

BREEDE RIVER VALLEY Districts:

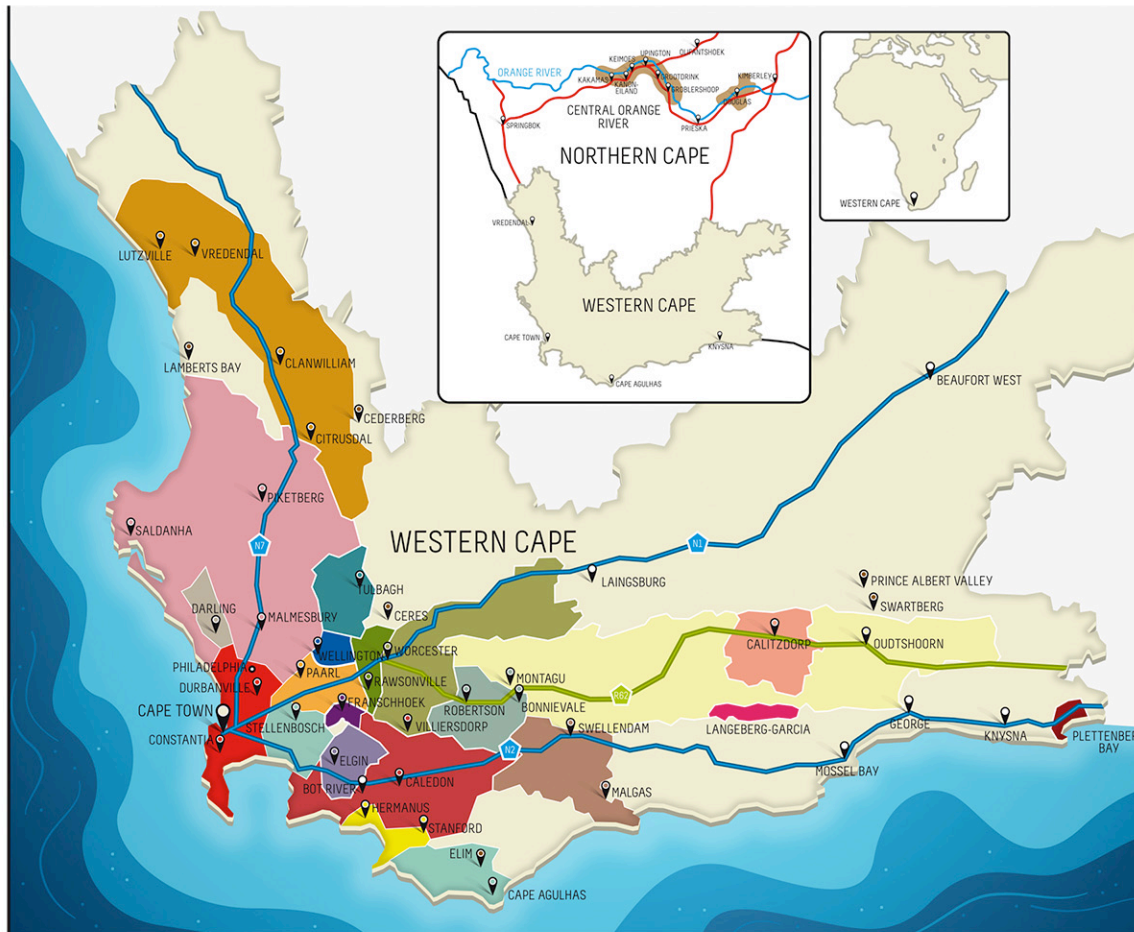
- BREDEKLOOF
- WORCESTER
- ROBERTSON

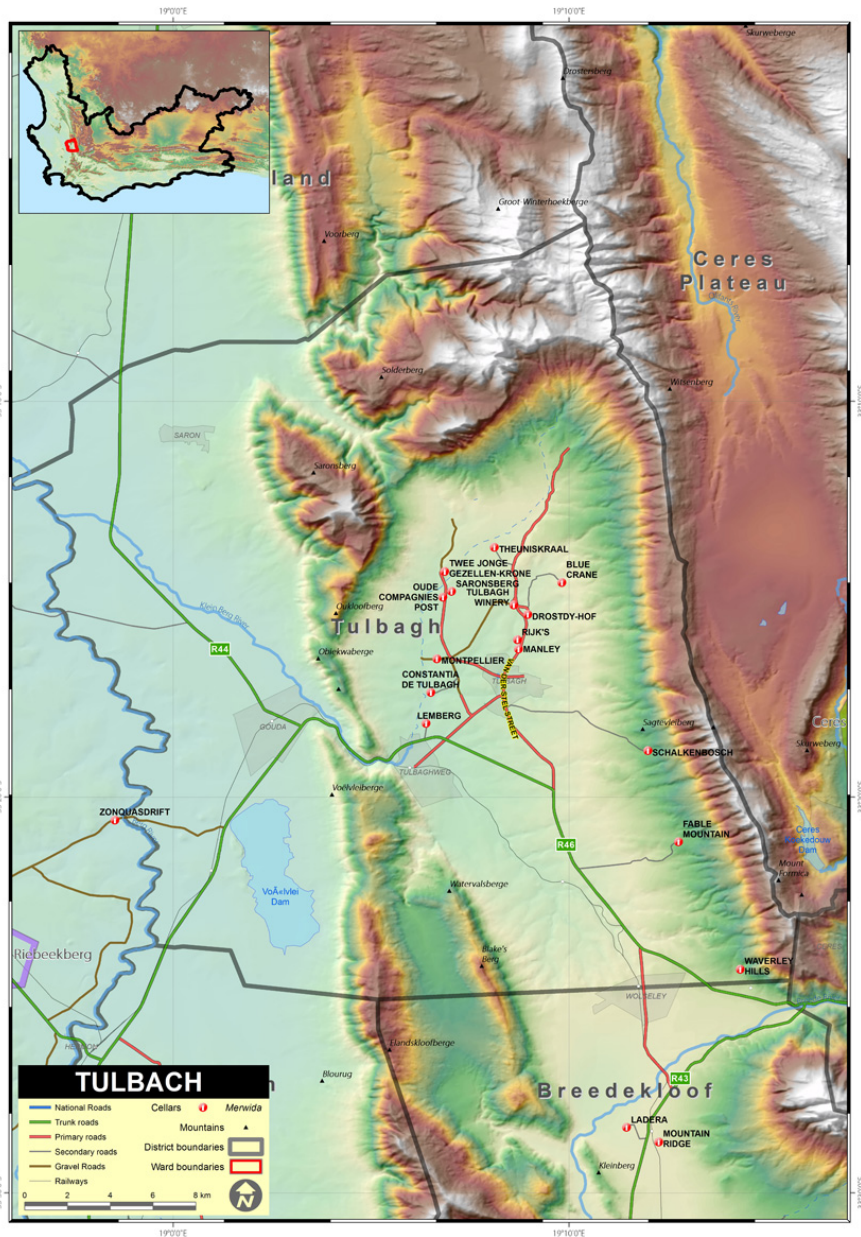
WARDS NOT PART OF A REGION

- CERES
- CEDERBERG
- PRINCE ALBERT VALLEY
- SWARTBERG
- LAMBERTS BAY

NORTHERN CAPE

- CENTRAL ORANGE RIVER (Ward)





Tulbagh

Sandy soils on valley floor, Granite and sandstone on the mountainsides

Largely wheat fields and orchards

Ave. Annual Rainfall 551mm

Mean Feb Temperature 24 C

“Cold trap”



Krone Cuvée Rosé Brut 2017

1710: Land granted to 2 Huguenots

“Two Young Bachelors”

1st vines early 18th century

1st Krone of the name 1916

NC Krone 1st in SA to install cold fermentation equipment

1959: Wins 13 Gold Medals, spurring growth of modern equipment

1977 began night harvesting

1987 began producing traditional method wines

2012 Purchased by Vinimark

85% Pinot Noir, 15% Chardonnay

Stephan de Beer, winemaker: “A tribute to Pinot Noir”

Only free-run juice

18 months on lees

6.1h/L RS

TA 5.3 g/L



WINEGROWING AREAS OF SOUTH AFRICA

WESTERN CAPE

COASTAL REGION Districts:

- SWARTLAND
- STELLENBOSCH
- CAPE TOWN
- TULBAGH
- PAARL
- FRANSCHHOEK VALLEY
- DARLING
- WELLINGTON

KLEIN KAROO Districts:

- CALITZDORP
- LANGEBERG-GARCIA

CAPE SOUTH COAST Districts:

- OVERBERG
- WALKER BAY
- SWELLENDAM
- CAPE AGULHAS
- PLETTENBERG BAY
- ELGIN

OLIFANTS RIVER Districts:

- LUTZVILLE VALLEY
- CITRUSDAL VALLEY
- CITRUSDAL MOUNTAIN

BREEDER RIVER VALLEY Districts:

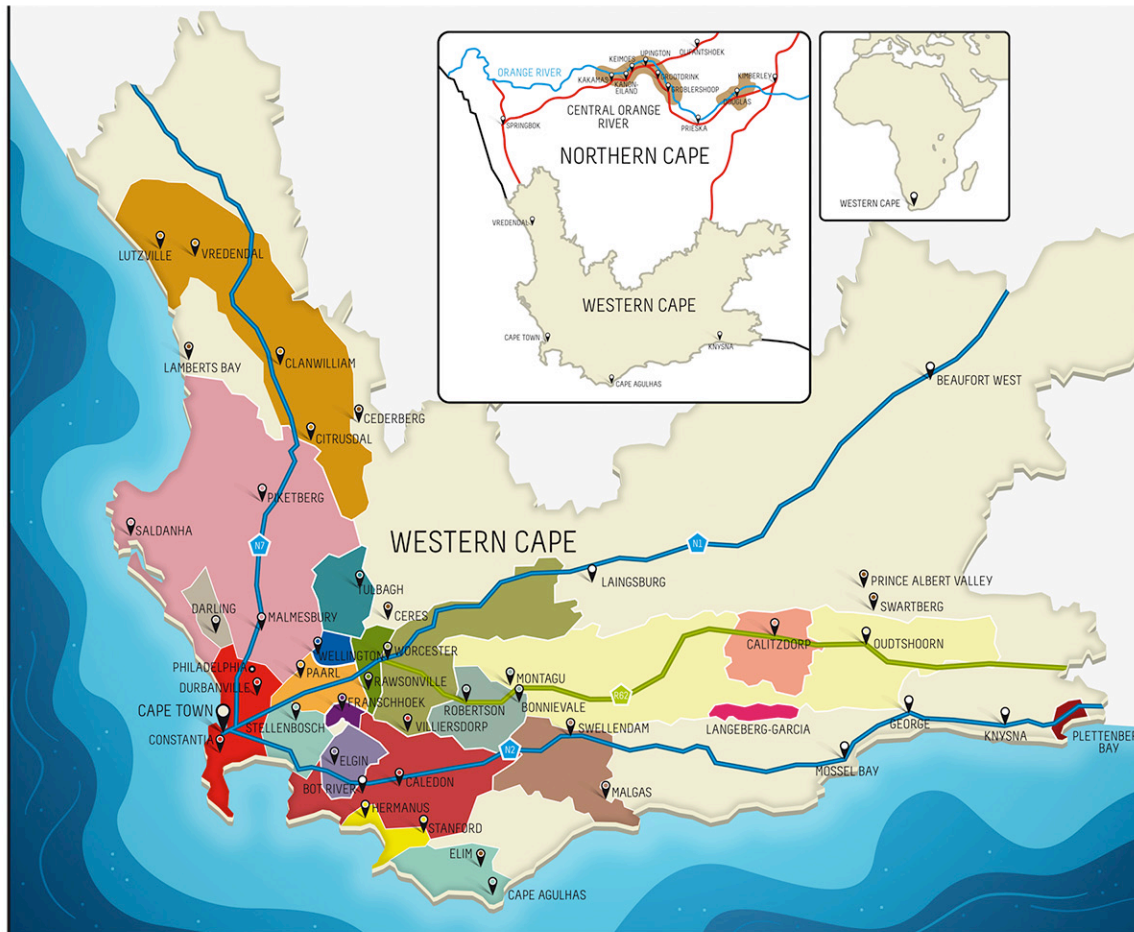
- BREEDEKLOOF
- WORCESTER
- ROBERTSON

WARDS NOT PART OF A REGION

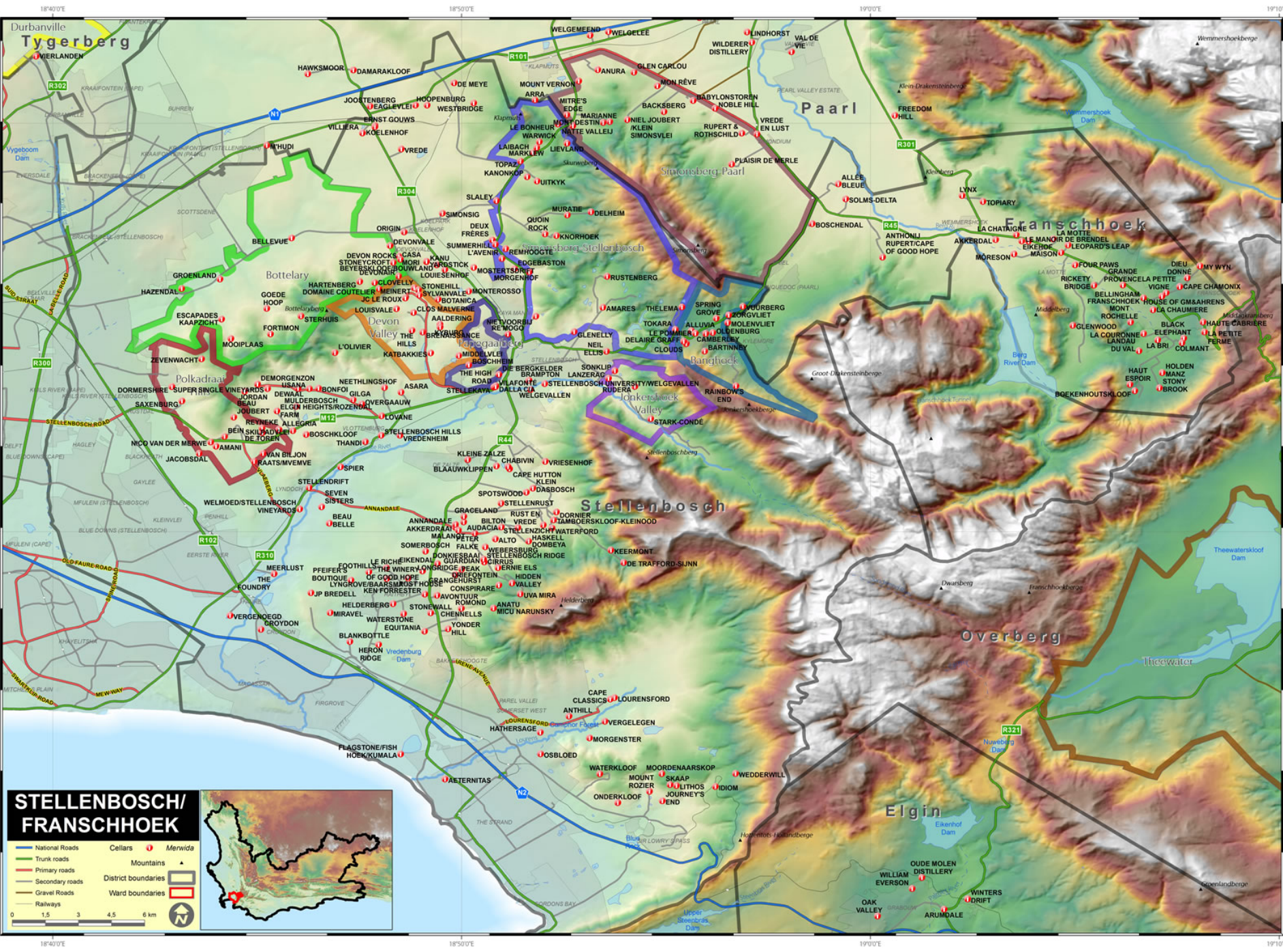
- CERES
- CEDERBERG
- PRINCE ALBERT VALLEY
- SWARTBERG
- LAMBERTS BAY

NORTHERN CAPE

- CENTRAL ORANGE RIVER (Ward)

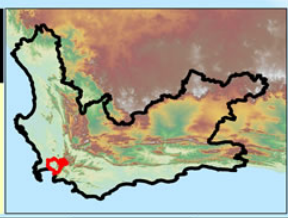


www.wosa.co.za



STELLENBOSCH/ FRANSCHHOEK

- National Roads
- Trunk roads
- Primary roads
- Secondary roads
- Gravel Roads
- Railways
- Cellars
- ▲ Mountains
- District boundaries
- Ward boundaries





Franschhoek Valley



Bellingham Bernard Series Old Vine Chenin Blanc 2017

Sourced from Agter-
Paarl, Stellenbosch, &
Cape Town

35-47 years old
bushvines

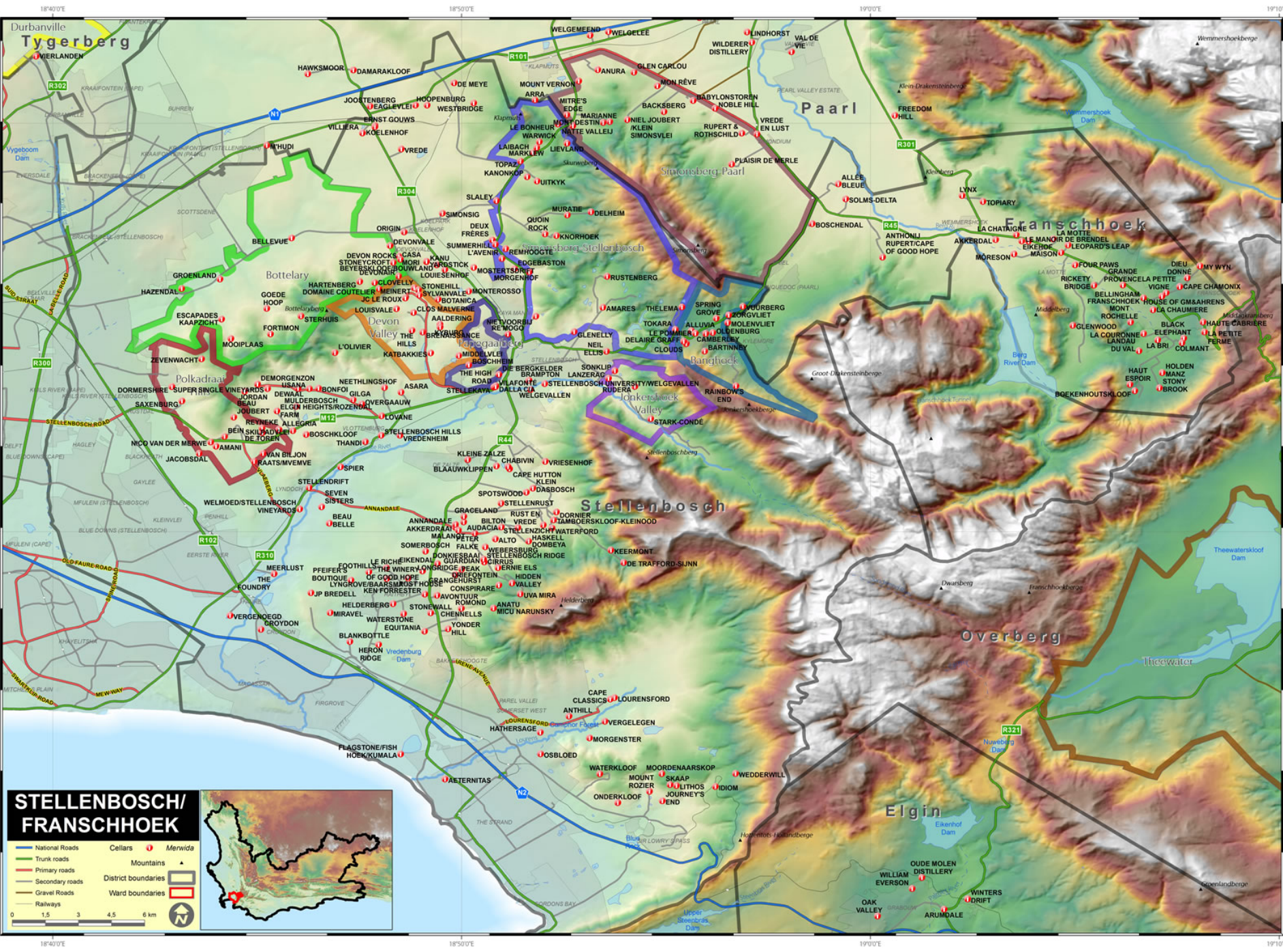
12 months in 50% new
French oak

Farm established 1693 by Gerritt Janz Van Vuuren
And his wife, a Huguenot

Original name “Bellin Champ,” “Beautiful Field”

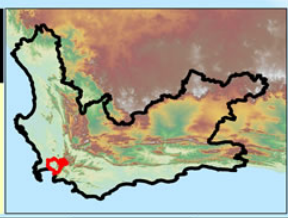
Purchased by Bernard and Fredagh Podlashuk in 1943: “Fredagh and Pod”

South Africa’s 1st Rosé 1949, and 1st Shiraz in 1956



STELLENBOSCH/ FRANSCHHOEK

- National Roads
- Trunk roads
- Primary roads
- Secondary roads
- Gravel Roads
- Railways
- Cellars
- ▲ Mountains
- District boundaries
- Ward boundaries





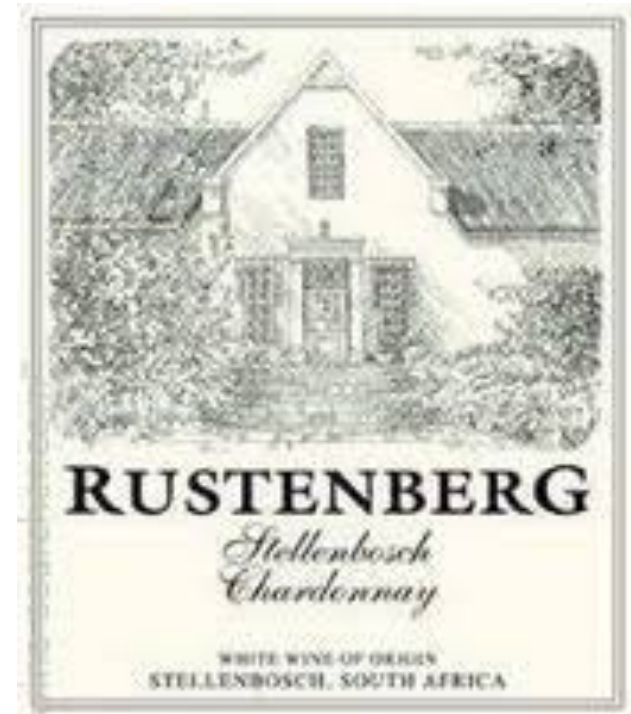
Rustenberg

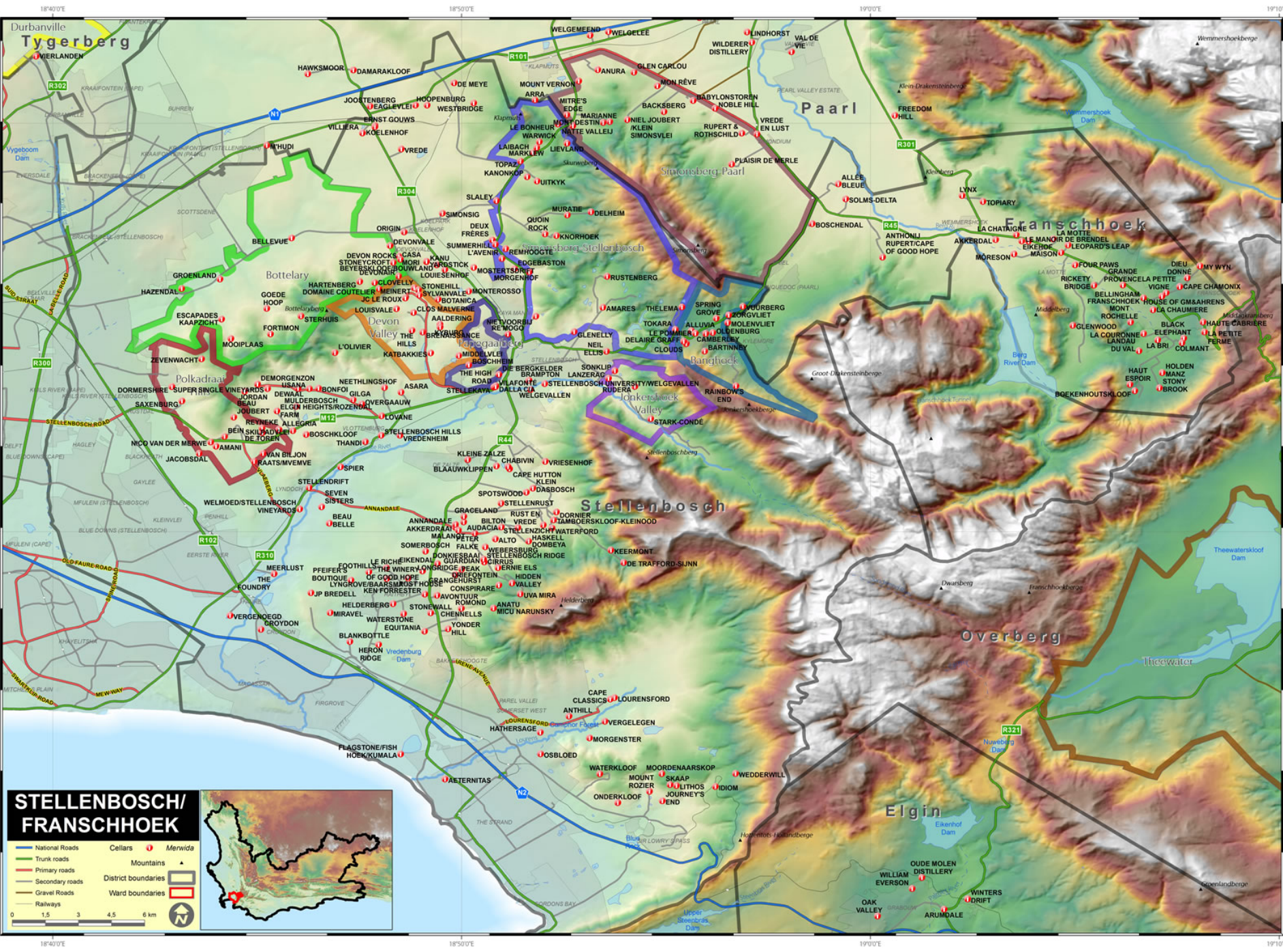


Rustenberg Chardonnay 2017

Decomposed Granite soils

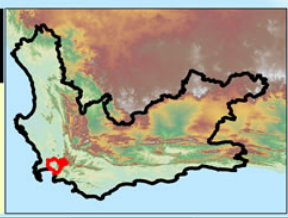
100% Malo 25% New French Oak





STELLENBOSCH/ FRANSCHHOEK

- National Roads
- Trunk roads
- Primary roads
- Secondary roads
- Gravel Roads
- Railways
- Cellars
- ▲ Mountains
- District boundaries
- Ward boundaries
- ⬇ Merwida





Boschendal

Boschendal Elgin Chardonnay 2017

1685: Granted to Jean Le Long, a French Huguenot

1710: Purchased by Abraham de Villiers; stays in family until 1879

1812: Farmhouse built

Incorporated other farms along the way: Rhone, Languedoc, Bethlehem, Nieuwedorp, Goode Hoop

1879: Purchased by Rhodes and largely converted into orchards (phylloxera)

1969: Purchased by Anglo-American, who build new winery

2004: Boschendal Ltd, formed, with partial black ownership

2012: New Ownership and reinvestment

Built up from 50 workers to 550



WINEGROWING AREAS OF SOUTH AFRICA

WESTERN CAPE

COASTAL REGION Districts:

- SWARTLAND
- STELLENBOSCH
- CAPE TOWN
- TULBAGH
- PAARL
- FRANSCHHOEK VALLEY
- DARLING
- WELLINGTON

KLEIN KAROO Districts:

- CALITZDORP
- LANGEBERG-GARCIA

CAPE SOUTH COAST Districts:

- OVERBERG
- WALKER BAY
- SWELLENDAM
- CAPE AGULHAS
- PLETTENBERG BAY
- ELGIN

OLIFANTS RIVER Districts:

- LUTZVILLE VALLEY
- CITRUSDAL VALLEY
- CITRUSDAL MOUNTAIN

BREEDER RIVER VALLEY Districts:

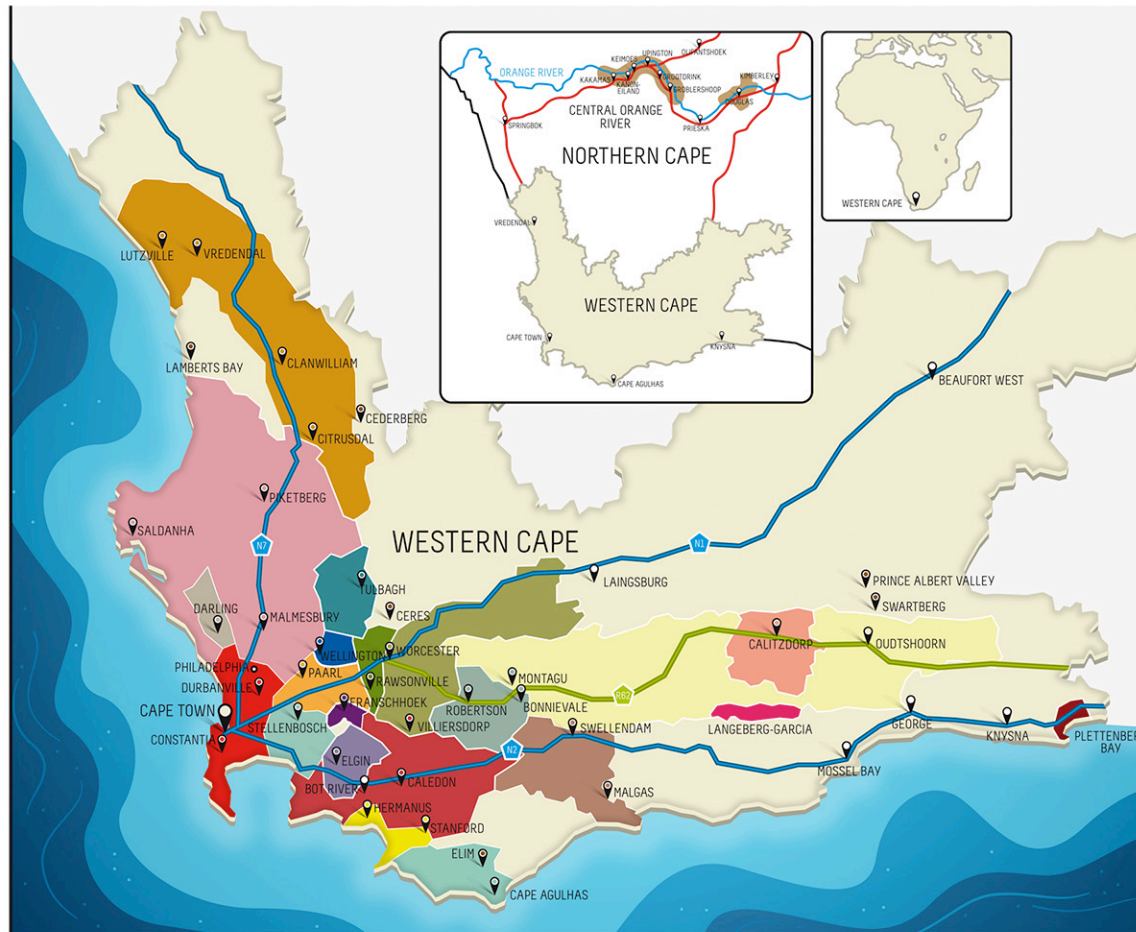
- BREDEKLOOF
- WORCESTER
- ROBERTSON

WARDS NOT PART OF A REGION

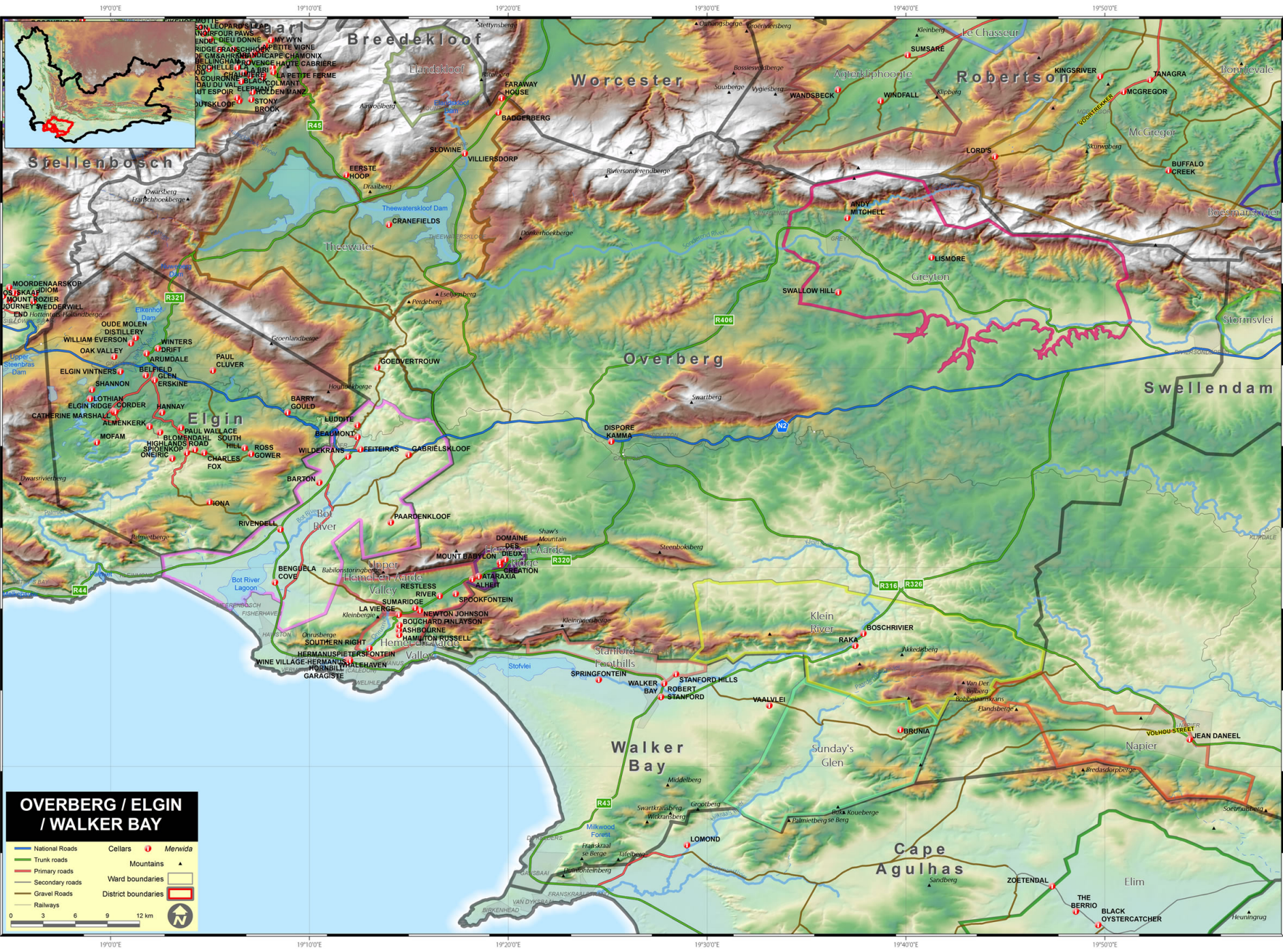
- CERES
- CEDERBERG
- PRINCE ALBERT VALLEY
- SWARTBERG
- LAMBERTS BAY

NORTHERN CAPE

- CENTRAL ORANGE RIVER (Ward)



www.wosa.co.za



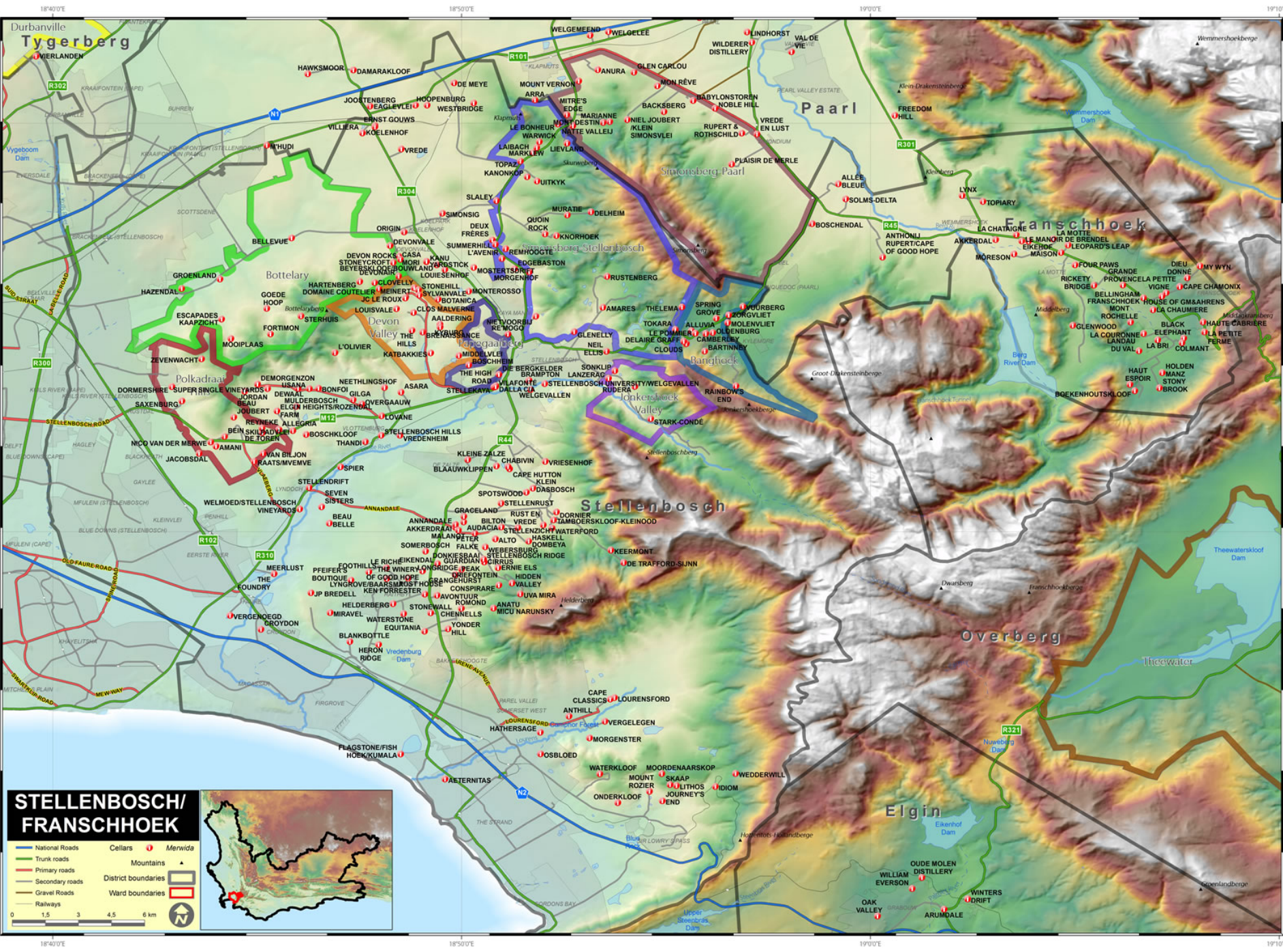
OVERBERG / ELGIN / WALKER BAY

	National Roads		Cellars		Merwida
	Trunk roads		Mountains		Ward boundaries
	Primary roads		District boundaries		
	Secondary roads				
	Gravel Roads				
	Railways				



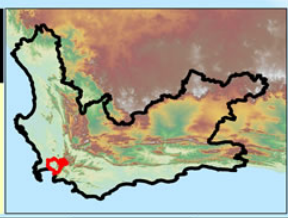


Elgin



STELLENBOSCH/ FRANSCHHOEK

- National Roads
- Trunk roads
- Primary roads
- Secondary roads
- Gravel Roads
- Railways
- Cellars
- ▲ Mountains
- District boundaries
- Ward boundaries



Meerlust Red 2015



1690: Vrijburgher Henning Huysing granted land, named Welmoed

1693: Sold portion, renamed remainder Meerlust

1698: Wine production begins

1702: Sells to Abraham de Villiers

1756: bought by Jonhhes Albertus Myburgh; now in 8th generation

1970s: Nico Myburgh replants

1975: releases Cabernet

1980: releases Rubicon

2002: Re-introduced Meerlust Red

WINEGROWING AREAS OF SOUTH AFRICA

WESTERN CAPE

COASTAL REGION Districts:

- SWARTLAND
- STELLENBOSCH
- CAPE TOWN
- TULBAGH
- PAARL
- FRANSCHHOEK VALLEY
- DARLING
- WELLINGTON

KLEIN KAROO Districts:

- CALITZDORP
- LANGEBERG-GARCIA

CAPE SOUTH COAST Districts:

- OVERBERG
- WALKER BAY
- SWELLENDAM
- CAPE AGULHAS
- PLETTENBERG BAY
- ELGIN

OLIFANTS RIVER Districts:

- LUTZVILLE VALLEY
- CITRUSDAL VALLEY
- CITRUSDAL MOUNTAIN

BREEDER RIVER VALLEY Districts:

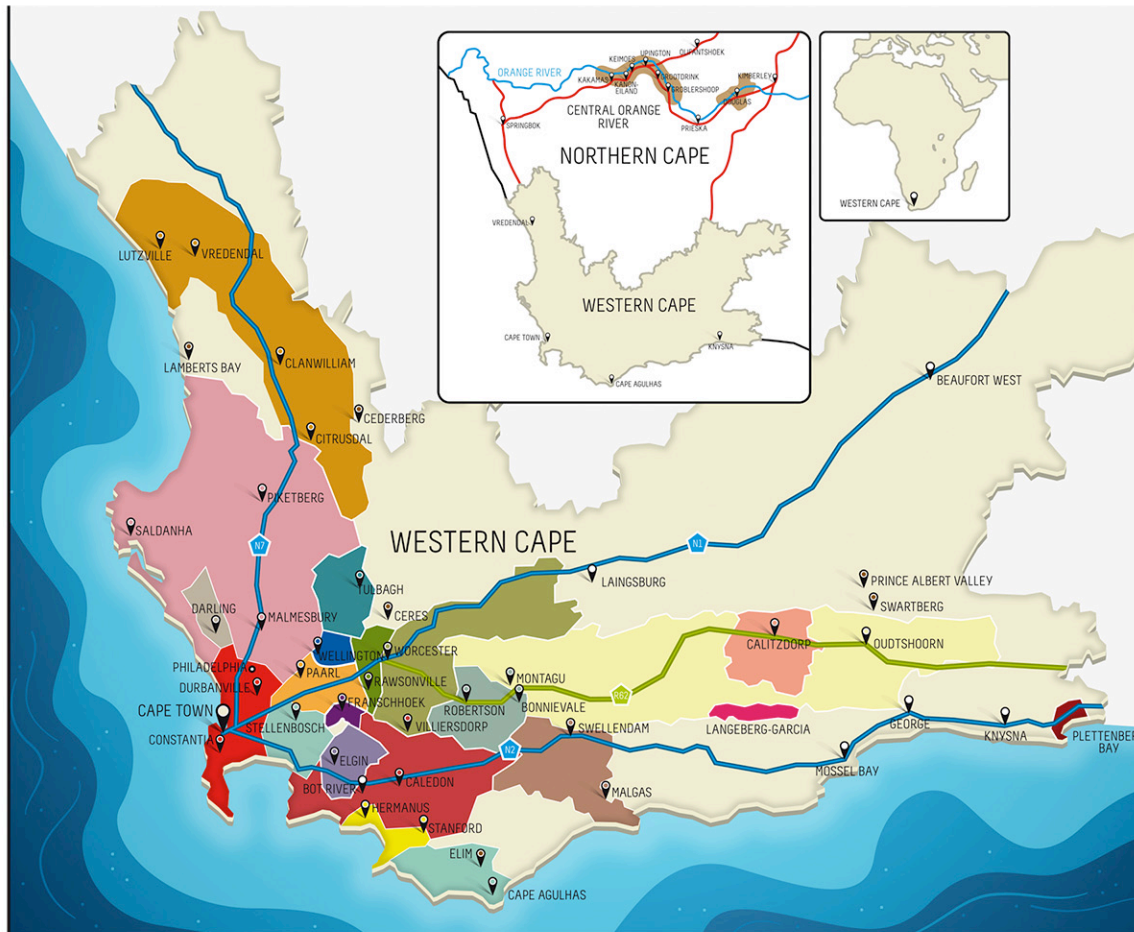
- BREEDEKLOOF
- WORCESTER
- ROBERTSON

WARDS NOT PART OF A REGION

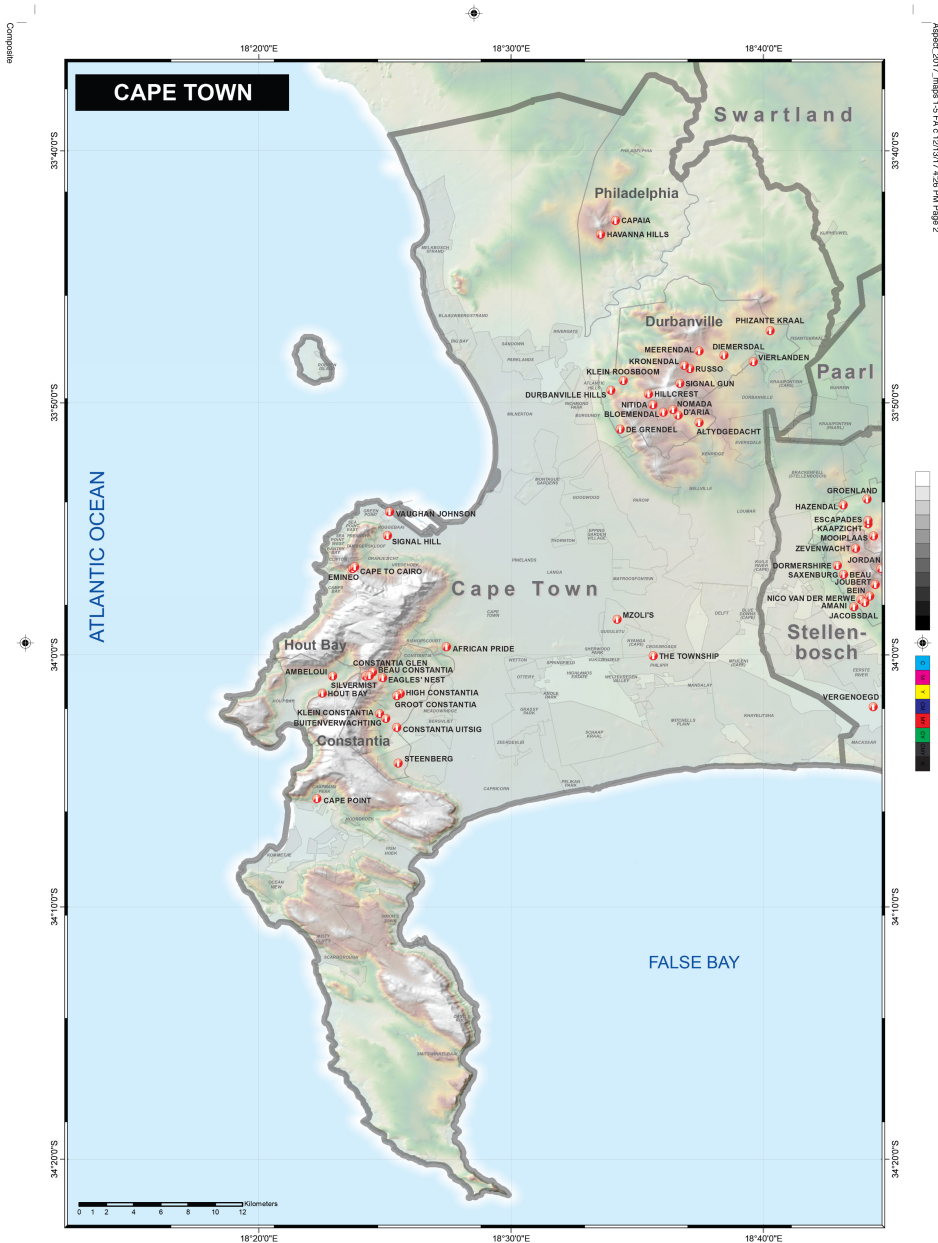
- CERES
- CEDERBERG
- PRINCE ALBERT VALLEY
- SWARTBERG
- LAMBERTS BAY

NORTHERN CAPE

- CENTRAL ORANGE RIVER (Ward)



www.wosa.co.za



Constantia:

1679: Simon van Der Stel named Commander

July 13 1685: Van Der Stel granted 763ha, 53x the usual grant. Planted 10,000 vines

1691: Van Der Stel named 1st Governor of the Cape

1692: VOC in Amsterdam and Batavia acknowledge quality of wine

1709: 70,000 vines planted. Producing 5630L of wine per year

1712: Van Der Stel dies

1716: Land sold at auction: divided into Groot Constantia, Klein Constantia, and Hoop op Constantia

1718: Johannes Colijn marries widow who owns Hoop op Constantia

1724: Colijn remarries; new wife is related to the Cloete family

1734: Johann Colijn secures loan for his brother-in-law to purchase Groot Constantia; effectively controls both estates

1778: Hendrik Cloete purchases Groot

1823: Today's klein Constantia separated from Groot Constantia

1857: Colijns go bankrupt

1872: Cloete's go bankrupt

1885: Government purchases Groot Constantia, intended as a model farm. Last commercial of "old" Constantia

1920s: Groot Constantia vineyards leased to private farmers

1940s/50s: Replanting; production begins again

1980: Dougie Jooste buys Klein Constantia

1986: First Vin de Constance of modern era



Groot Constantia

Groot Constantia Pinotage 2017



Klein Constantia vin de Constance 2015



Past Constantia Fans:

Napoleon and his nemesis, the Duke of Wellington

Baudelaire, who visited the estate in 1841

Jane Austen

Louis XVI, 1782: 2,634 bottles of Constantia in cellar at Versailles

Charles Dickens

George Washington

WINEGROWING AREAS OF SOUTH AFRICA

WESTERN CAPE

COASTAL REGION Districts:

- SWARTLAND
- STELLENBOSCH
- CAPE TOWN
- TULBAGH
- PAARL
- FRANSCHHOEK VALLEY
- DARLING
- WELLINGTON

KLEIN KAROO Districts:

- CALITZDORP
- LANGEBERG-GARCIA

CAPE SOUTH COAST Districts:

- OVERBERG
- WALKER BAY
- SWELLENDAM
- CAPE AGULHAS
- PLETTENBERG BAY
- ELGIN

OLIFANTS RIVER Districts:

- LUTZVILLE VALLEY
- CITRUSDAL VALLEY
- CITRUSDAL MOUNTAIN

BREEDER RIVER VALLEY Districts:

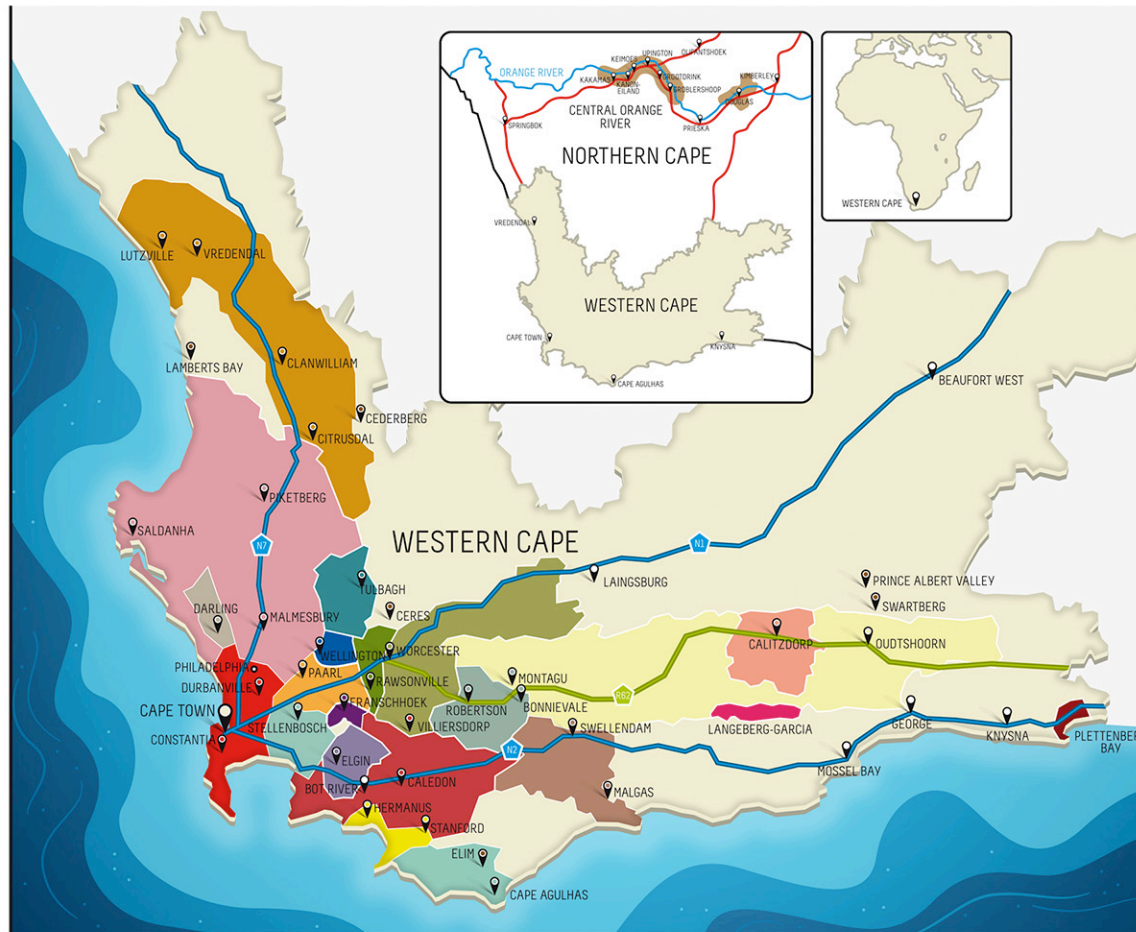
- BREEDEKLOOF
- WORCESTER
- ROBERTSON

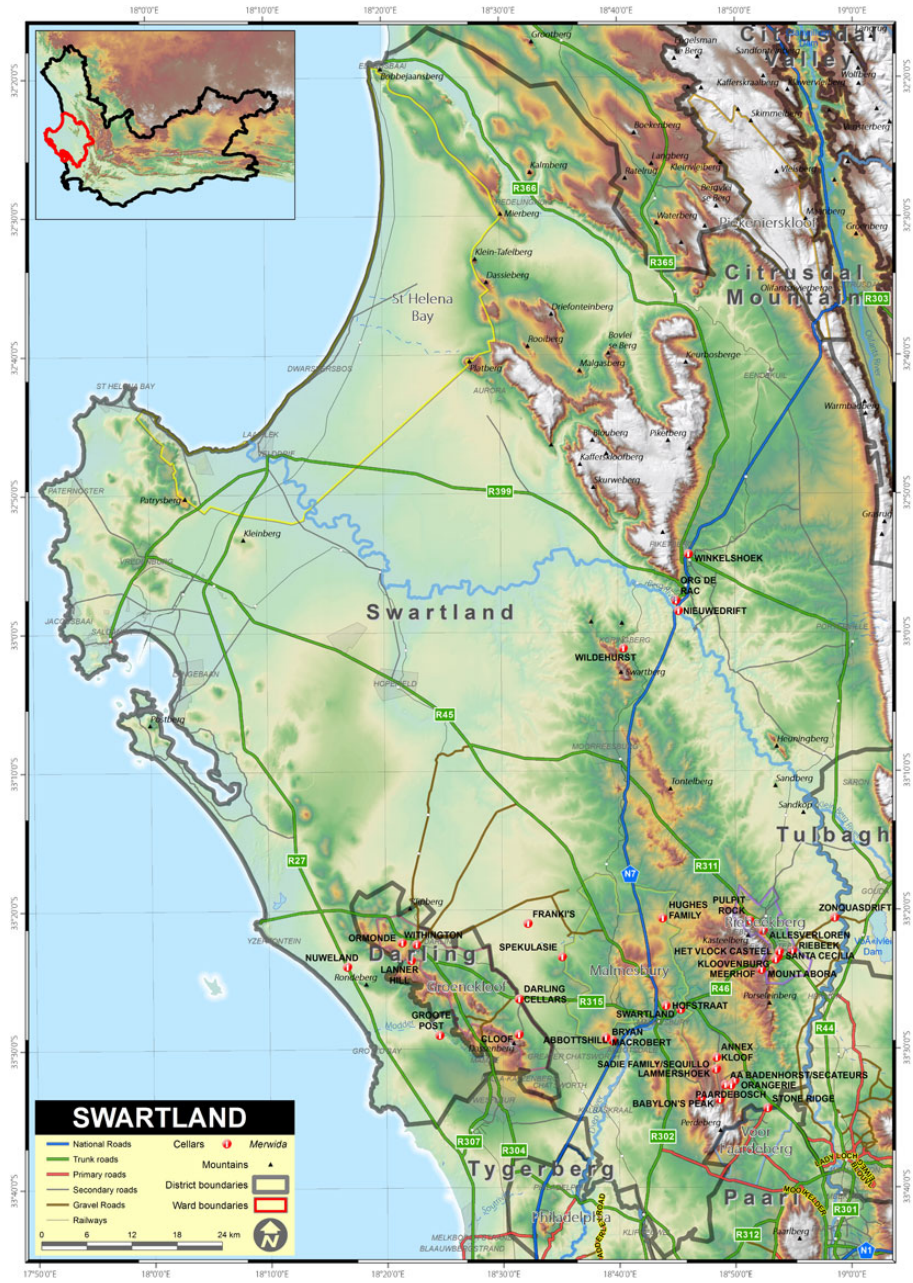
WARDS NOT PART OF A REGION

- CERES
- CEDERBERG
- PRINCE ALBERT VALLEY
- SWARTBERG
- LAMBERTS BAY

NORTHERN CAPE

- CENTRAL ORANGE RIVER (Ward)





Swartland:

300-500mm rainfall

Mostly shale and granitic soils, with some iron-rich clays

Mean February temperature 23.3 C

Mostly wheat fields

50/50 bush vines vs/ trellised;
home to 91% of South Africa's
bushvines



Allesverloren

1694: Farm first settled by a widow named Cloete

1704: Family returns from Cape Town to find property burnt and sacked. "All is lost"
Farm is rebuilt, and land officially granted

1806: First winegrapes harvested.

1872: Daniel Francois Malan buys farm. Now 5th generation

Allesverloren Fine Old Vintage 2010

Dry farmed since 1954

Blend of Tinta Barocca, Touriga Nacional, Souzao, Tinta Francesca, Tinta Amarella

Sandstone and Shale soils

170-350m elevation

6 tons/ha

20 months in 2nd and 3rd fill 400L French oak

21.16% alcohol 101.7 g/L RS





Wines of
**South
Africa**

welcome to our world of discovery

The end