

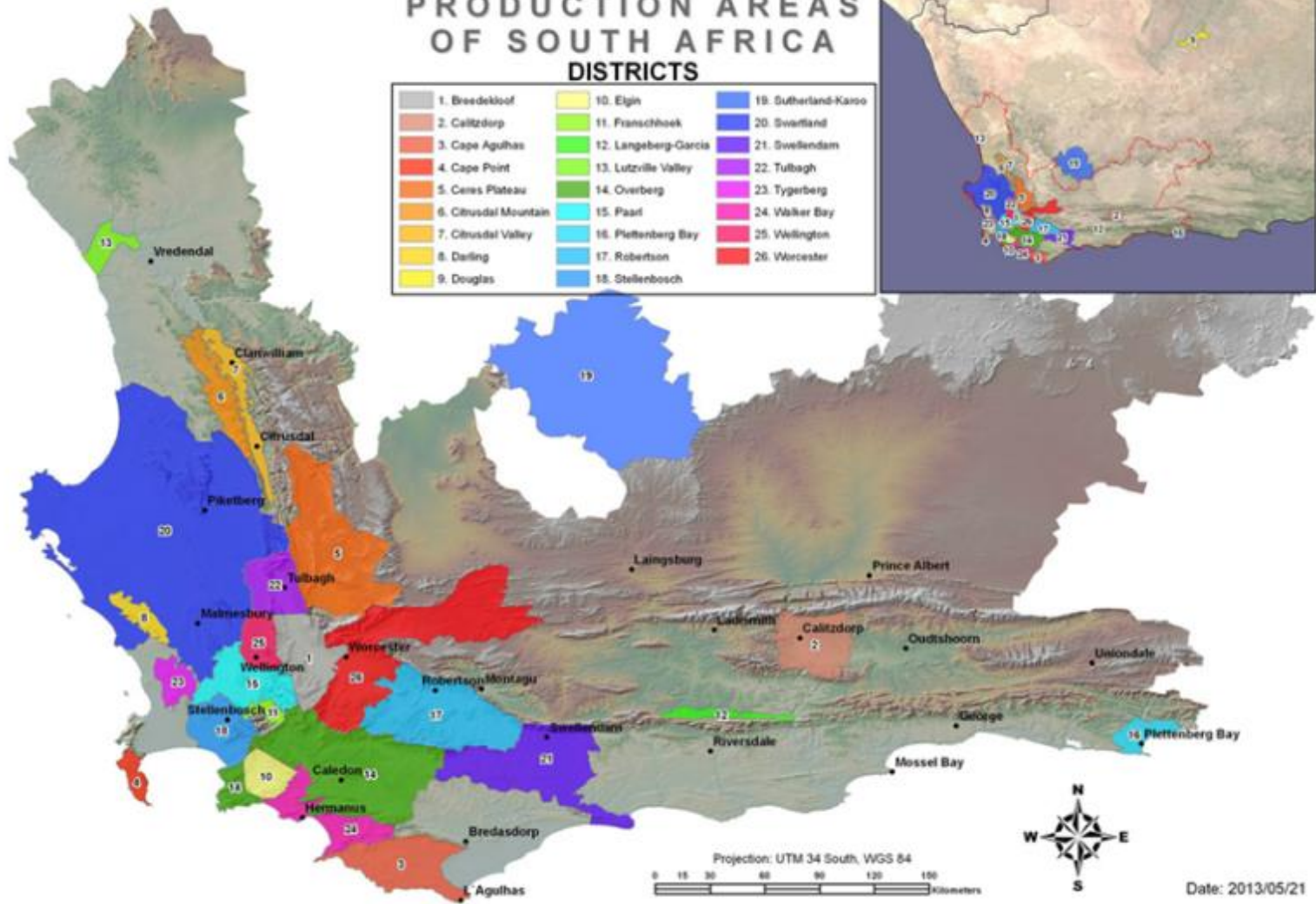


Wines of
**South
Africa**

welcome to our world of discovery

PRODUCTION AREAS OF SOUTH AFRICA DISTRICTS

1. Breede-kloof	10. Elgin	19. Sutherland-Karoo
2. Calitzdorp	11. Franschhoek	20. Swartland
3. Cape Agulhas	12. Langeberg-Garcis	21. Swellendam
4. Cape Point	13. Lutzville Valley	22. Tulbagh
5. Ceres Plateau	14. Overberg	23. Tygerberg
6. Citrusdal Mountain	15. Paarl	24. Walker Bay
7. Citrusdal Valley	16. Plettenberg Bay	25. Wellington
8. Darling	17. Robertson	26. Worcester
9. Douglas	18. Stellenbosch	



Districts of South Africa.

Coastal Region

Region: Coastal

District: Stellenbosch

Wards: Banghoek

Bottelary

Devon Valley

Jonkershoek Valley

Papegaaiberg

Polkadraai Hills

Simonsberg-Stellenbosch



The historical town of Stellenbosch, the 'town of oaks', boasts a winemaking tradition that stretches back to the mid-17th century.



The town and surrounding farms feature some of the finest examples of Cape Dutch architecture in the winelands.



Stellenbosch is the business hub of the South African wine industry.



Stellenbosch is also the educational and research centre of the winelands.



Stellenbosch University is the only university in South Africa which offers a degree in viticulture and oenology.



The Elsenburg School of Agriculture is also near Stellenbosch.



Stellenbosch has the most vineyard plantings in the winelands.

“At the Cape, as in the Medoc, Cabernet spells quality in dry red wine”

- Professor Abram Perold

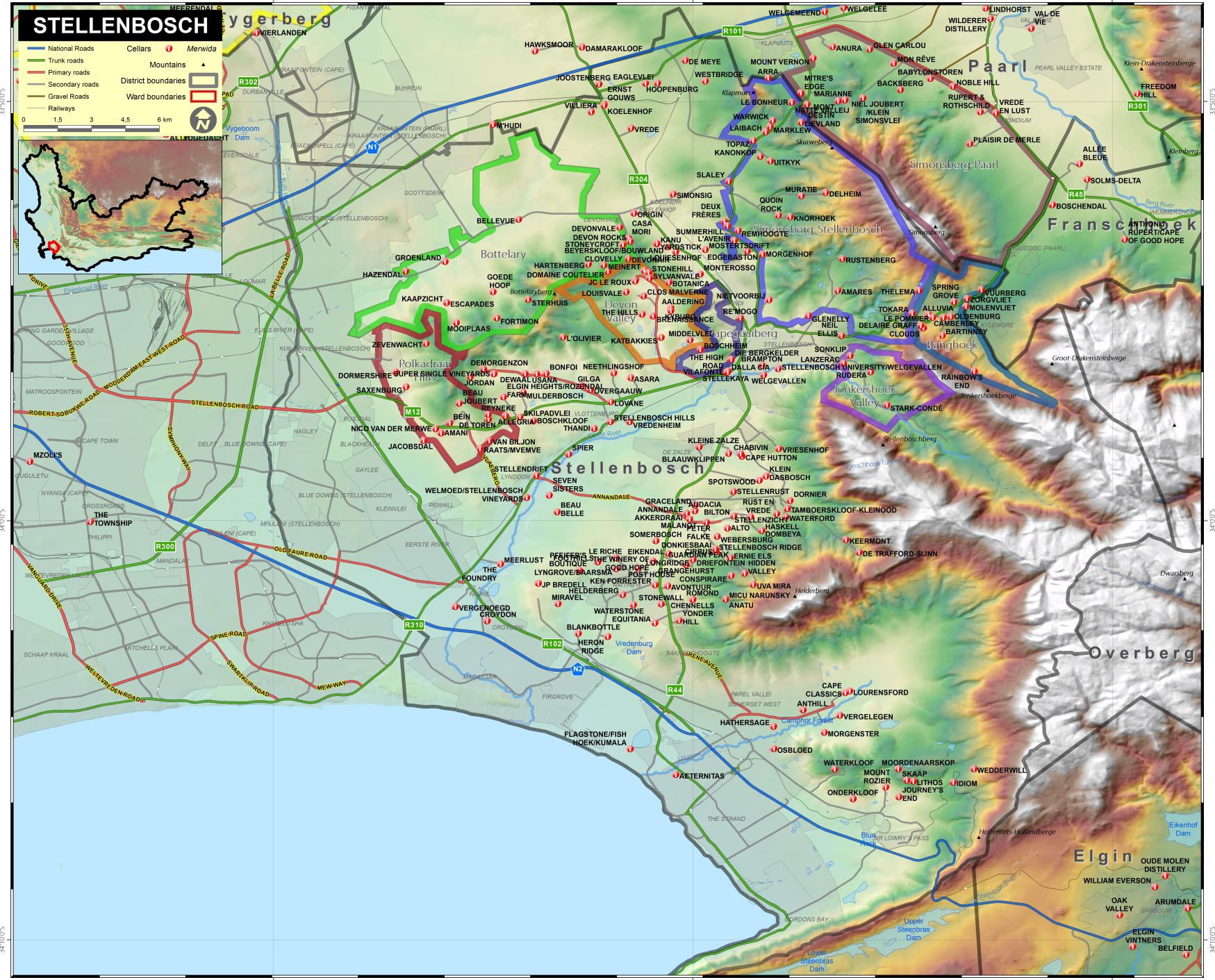
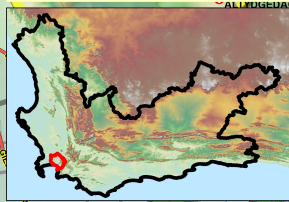
Through the years:	Stellenbosch	Overall:
1988:	<i>N/A</i>	<i>2.7%</i>
1998:	<i>41.7%</i>	<i>5.6%</i>
2008:	<i>12.5%</i>	<i>29%</i>
2018:	<i>19.7%</i>	<i>11%</i>

STELLENBOSCH

- National Roads
 - Trunk roads
 - Primary roads
 - Secondary roads
 - Gravel Roads
 - Railways
- Cellars
- Mountains
- District boundaries
- Ward boundaries



0 1,5 3 4,5 6 km



TODAY'S WINES, BY WARD/SUB-REGION

SIMONSBERG-STELLENBOSCH:

5. Rustenberg
6. Kanonkop
7. Edgebaston 'GS'

BANGHOEK VALLEY:

4. Tokara

BOTTELARY:

8. De Toren 'Fusion V'

UPPER BLAUWKLIPPEN VALLEY:

3. Keermont

HELDERBERG:

1. Boschendal '1685'
2. Rust en Vrede

Stellenbosch Cabernet Sauvignon Plantings by Ward:

None: 1497 ha

Simonsberg 299 ha

Banhoek 61ha

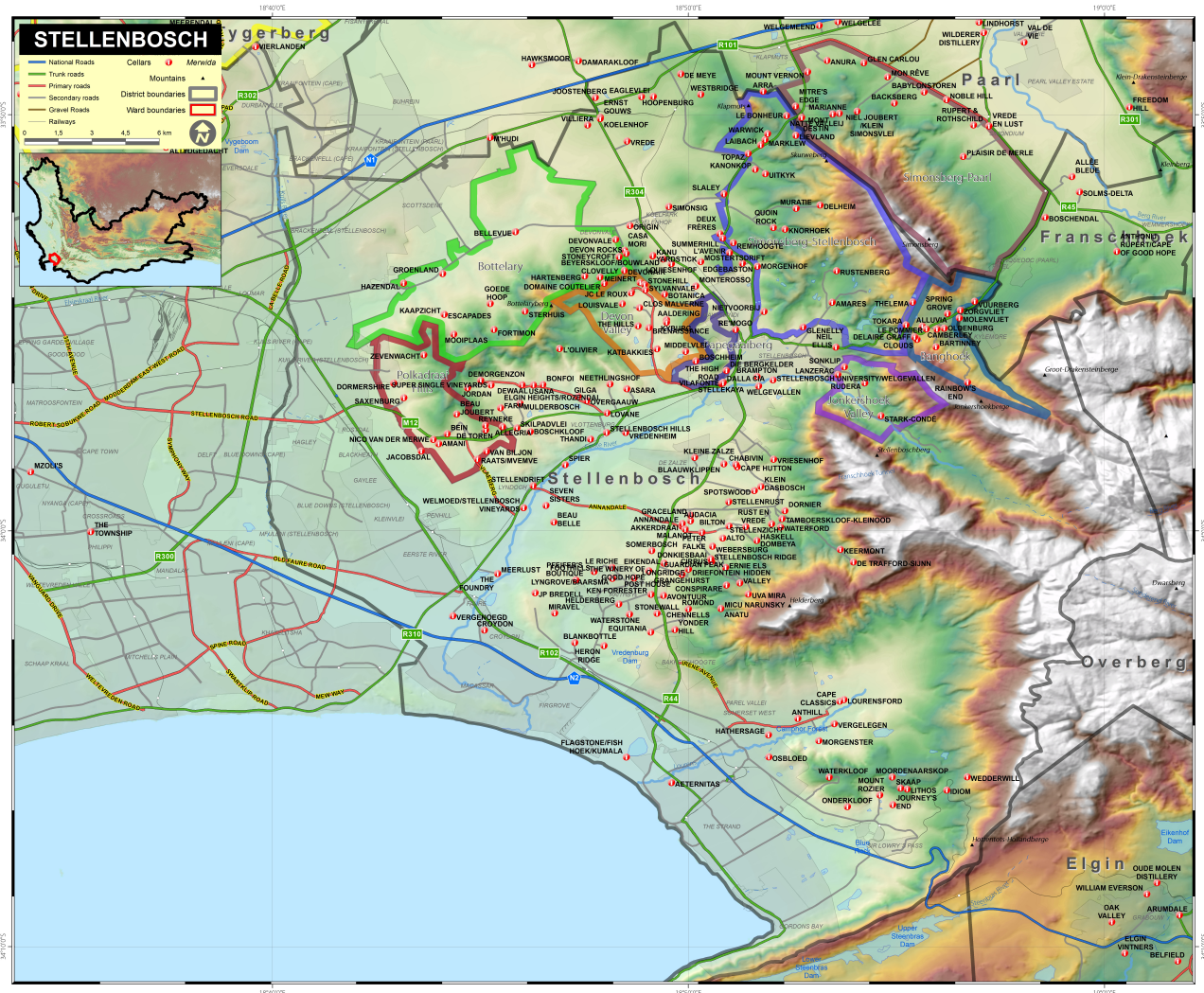
Jonkershoek: 54ha

Bottelary: 357ha

Devon Valley: 86ha

Papegaaiberg: 8ha

Polkadraai: 140ha

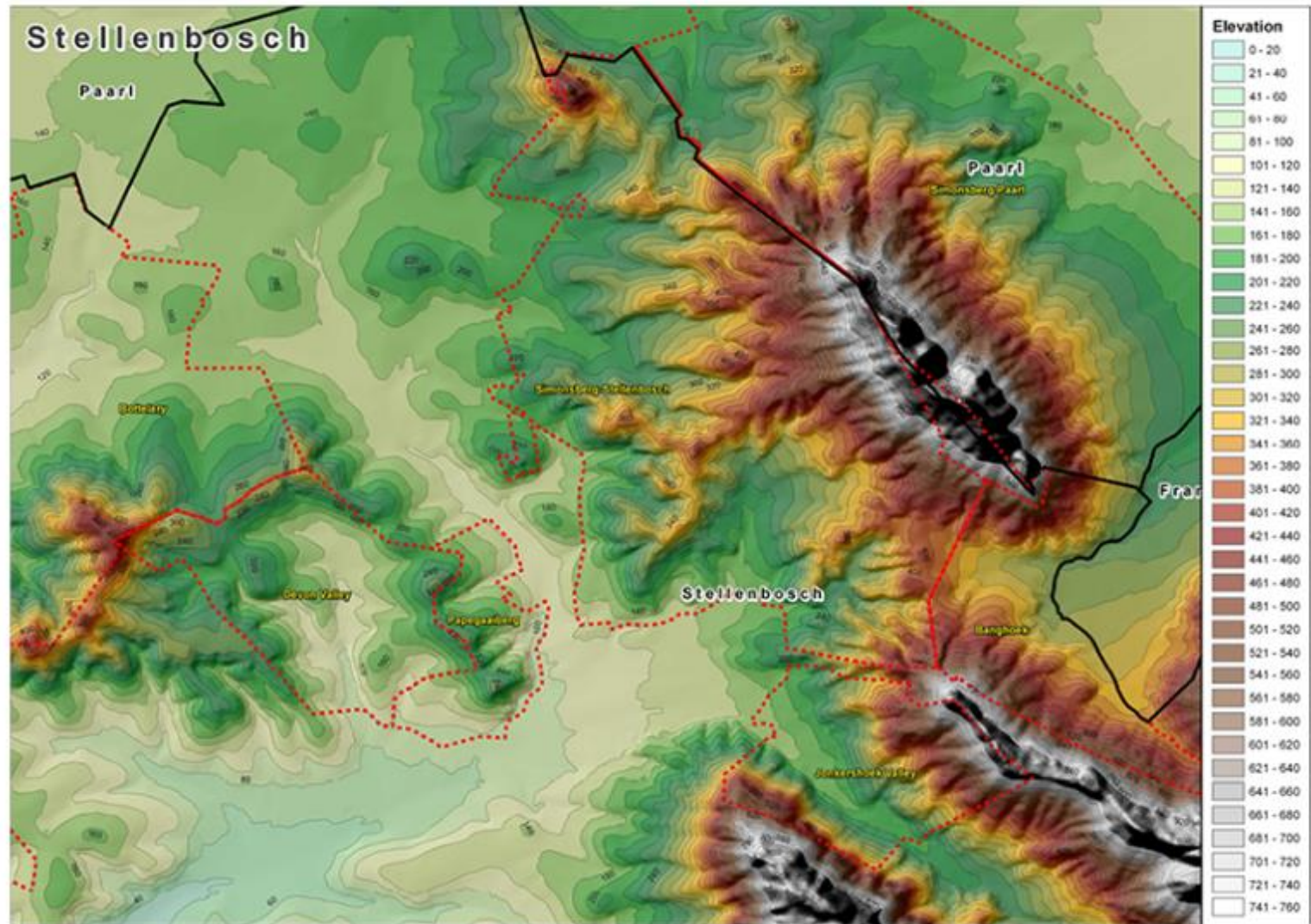




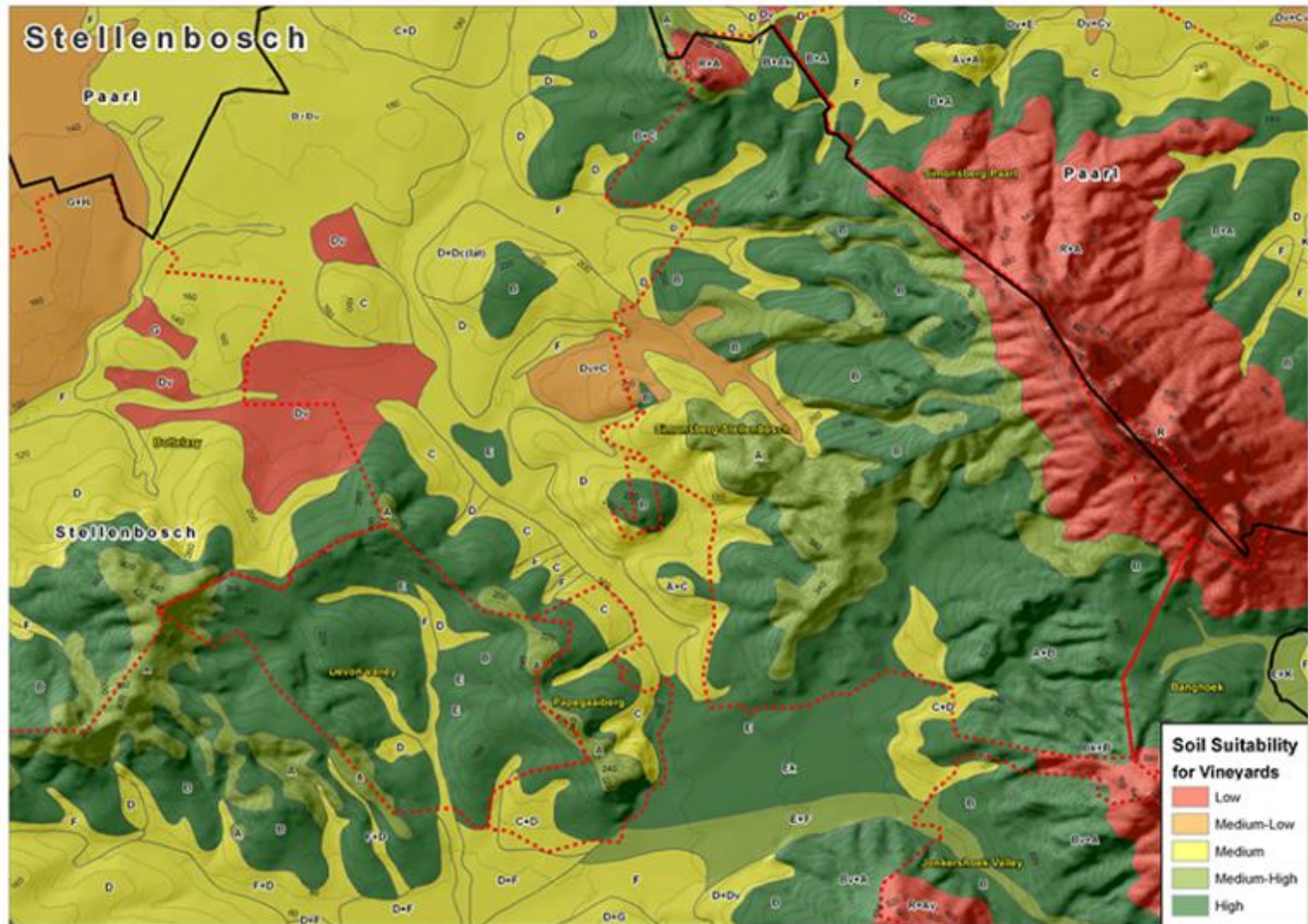
The average rainfall in the district varies from 600–2 000 mm a year.



The mean February temperature is 21.8°C (Nietvoorbij Weather Station).



This ward has predominantly south-westerly aspects and, because of altitudes commonly higher than 200 m, it is generally open to the cool south-westerly summer breezes originating from False Bay, some 25 km away.



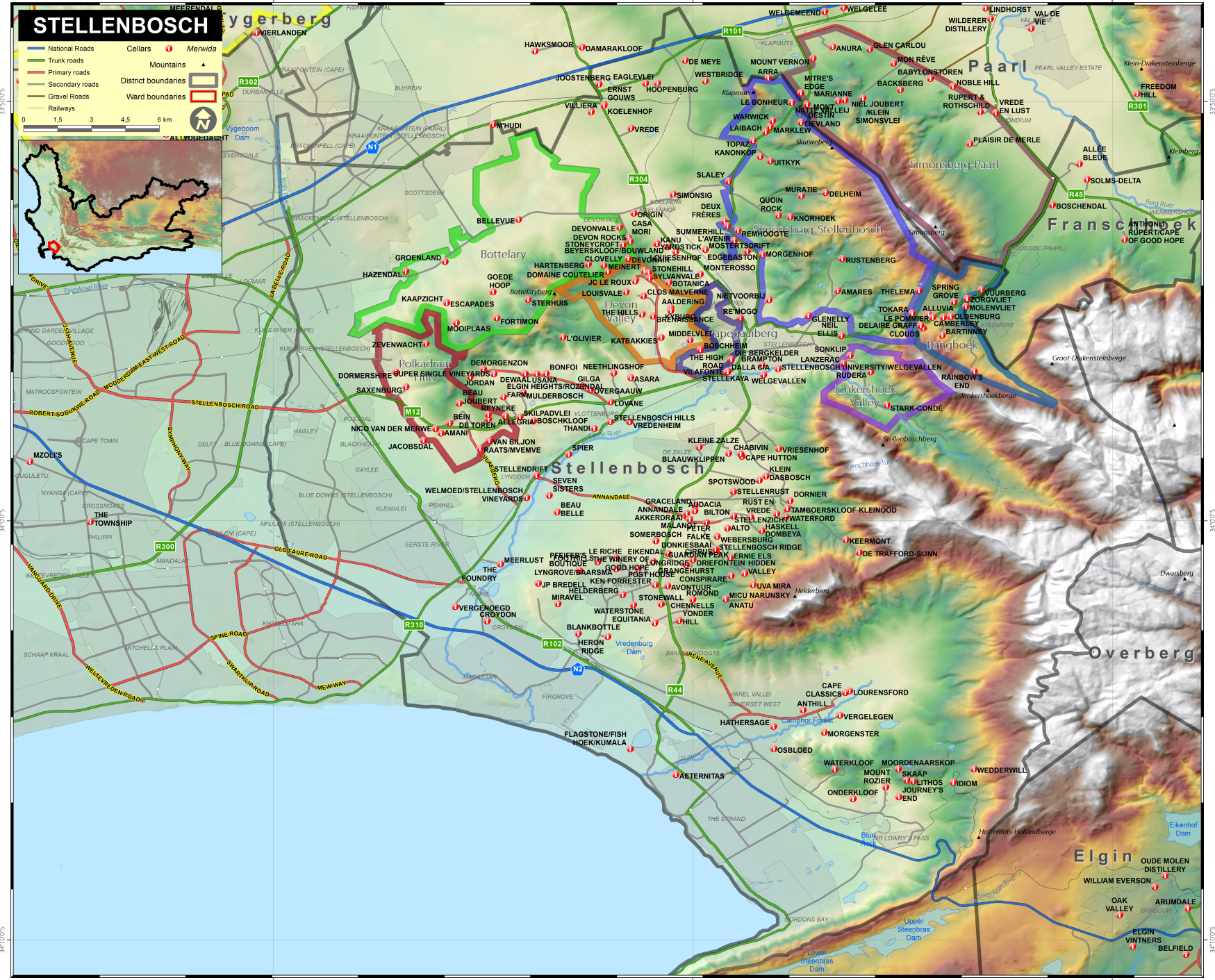
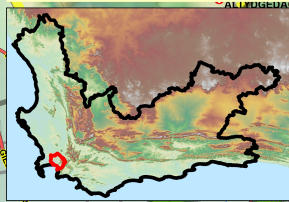
The sands and alluvial soils of the valley floors give way to predominantly granitic and shale yellow and reddish Oakleaf and Tukulu soils on the slopes.

STELLENBOSCH

- National Roads
 - Trunk roads
 - Primary roads
 - Secondary roads
 - Gravel Roads
 - Railways
- Cellars
- Mountains
- District boundaries
- Ward boundaries



0 1,5 3 4,5 6 km



18°40'0"E

18°50'0"E

19°0'0"E

33°50'0"S

34°0'0"S

34°10'0"S

33°50'0"E

34°0'0"E

34°10'0"E



Boschendal

**Rust
en
Vrede**

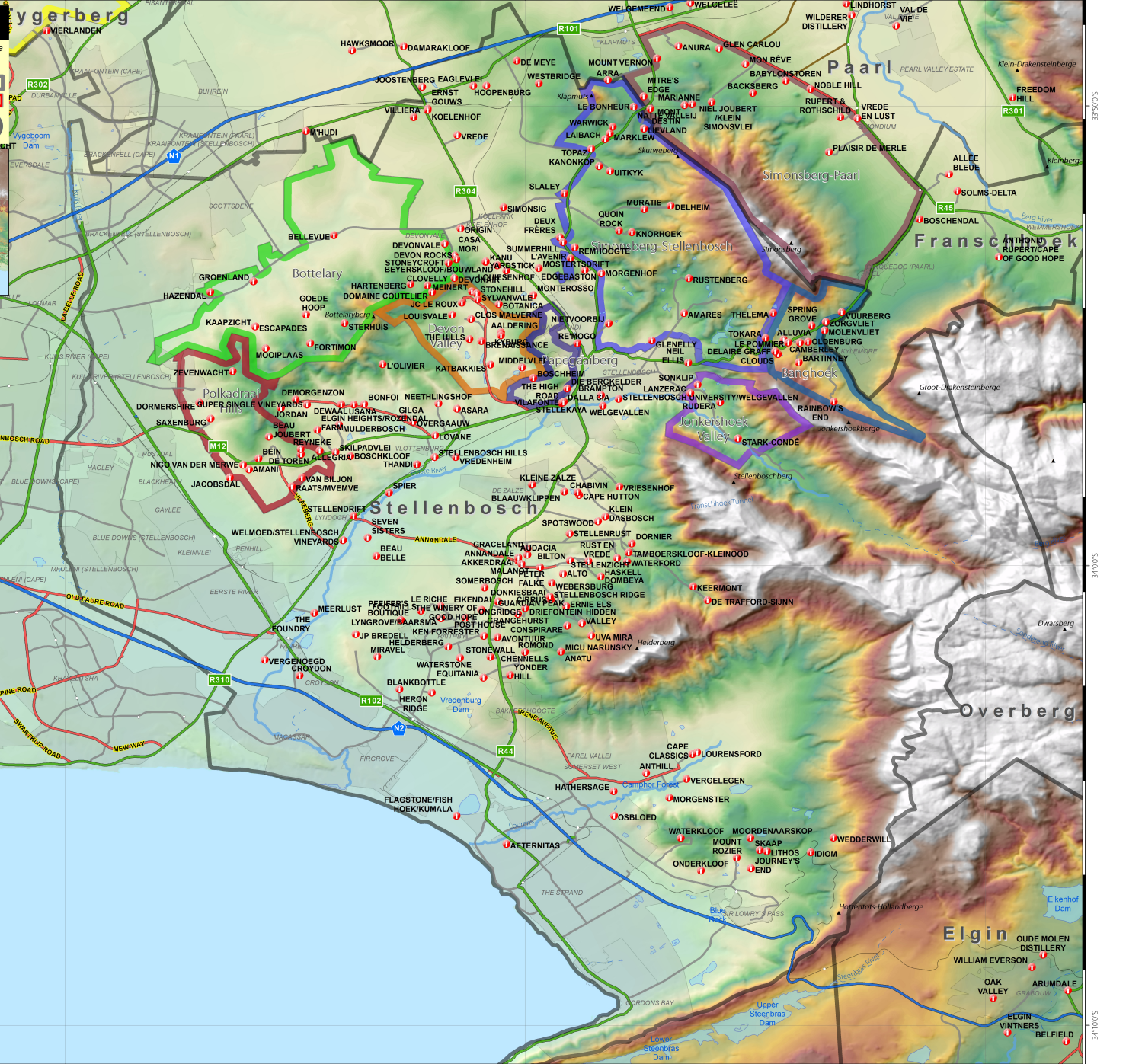
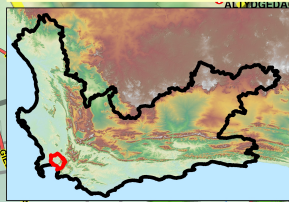


STELLENBOSCH

- National Roads
 - Trunk roads
 - Primary roads
 - Secondary roads
 - Gravel Roads
 - Railways
- Cellars
- Mountains
- District boundaries
- Ward boundaries



0 1,5 3 4,5 6 km





Keermont

320m elevation E-N-W facing ridge clay and decomposed granite soils

22 months in French Oak 18 months in bottle before release



The scenic Jonkershoek Valley ward is home to several top producers and boutique wineries.



The landscape is dominated by the majestic Twin Peaks, which tower up to 1 494 m high.



The average rainfall in the district varies from 600–2 000 mm a year.



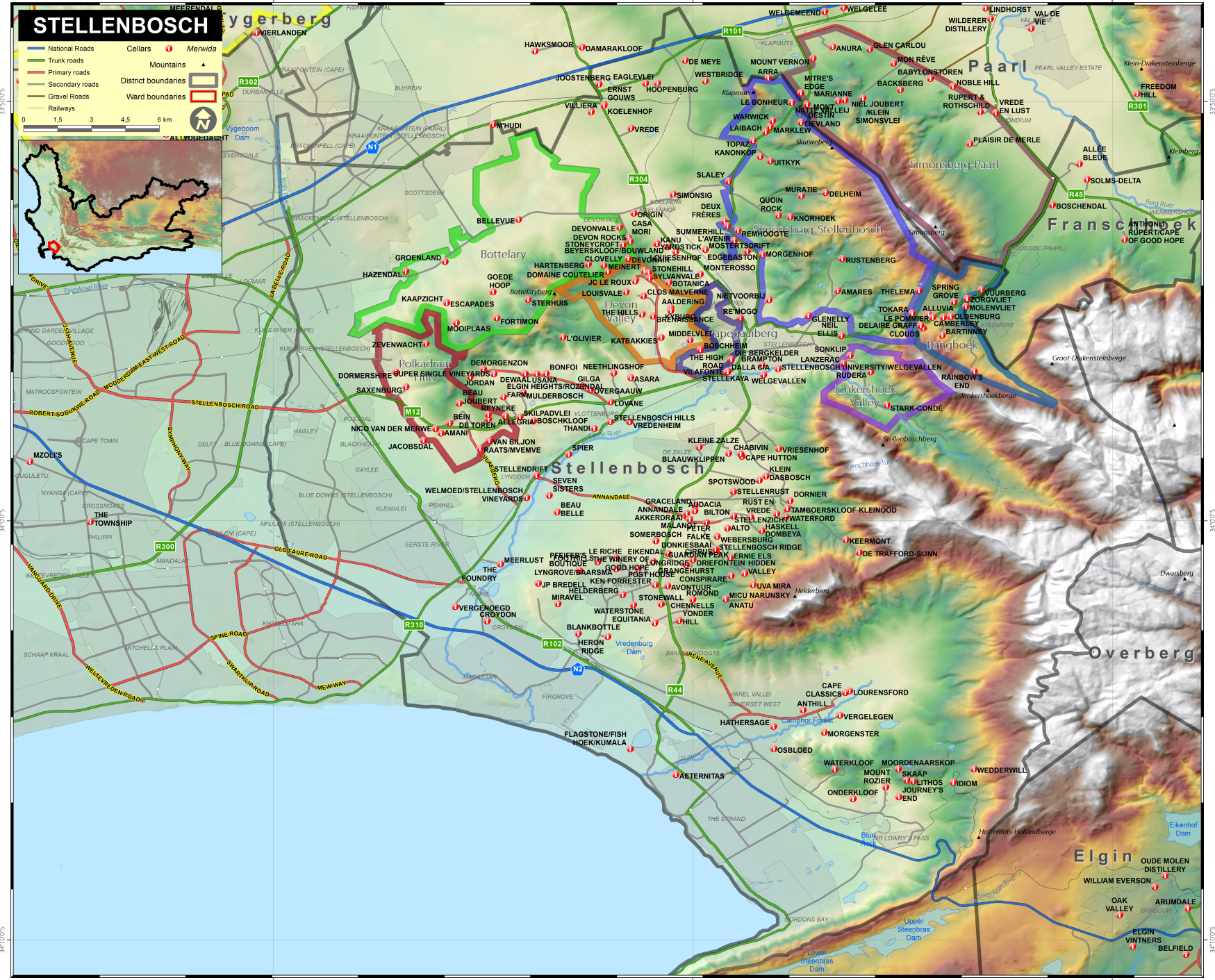
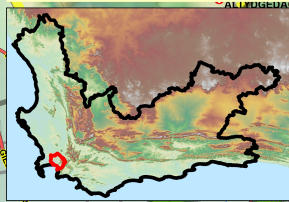
The mean February temperature is 21.8°C (Nietvoorbij Weather Station).

STELLENBOSCH

- National Roads
 - Trunk roads
 - Primary roads
 - Secondary roads
 - Gravel Roads
 - Railways
- Cellars Merwida
- Mountains
- District boundaries
- Ward boundaries



0 1,5 3 4,5 6 km



18°40'0"E

18°50'0"E

19°0'0"E

33°50'0"S

34°0'0"S

34°10'0"S

33°50'0"E

34°0'0"E

34°10'0"E



Banghoek is relatively new as a viticultural area with most vineyards planted in the last 20 years. It is mainly known for Sauvignon Blanc and red Bordeaux varieties.



These viticultural zones are characterised by yellow-brown to reddish brown, deeply weathered mountain foothill soils with good drainage and water-holding properties, typically situated at altitudes of 150–400 m.

Tokara

350-550m elevation 3-12 tons/ha

Decomposed granite and sandstone

18 months in 20% new French Oak



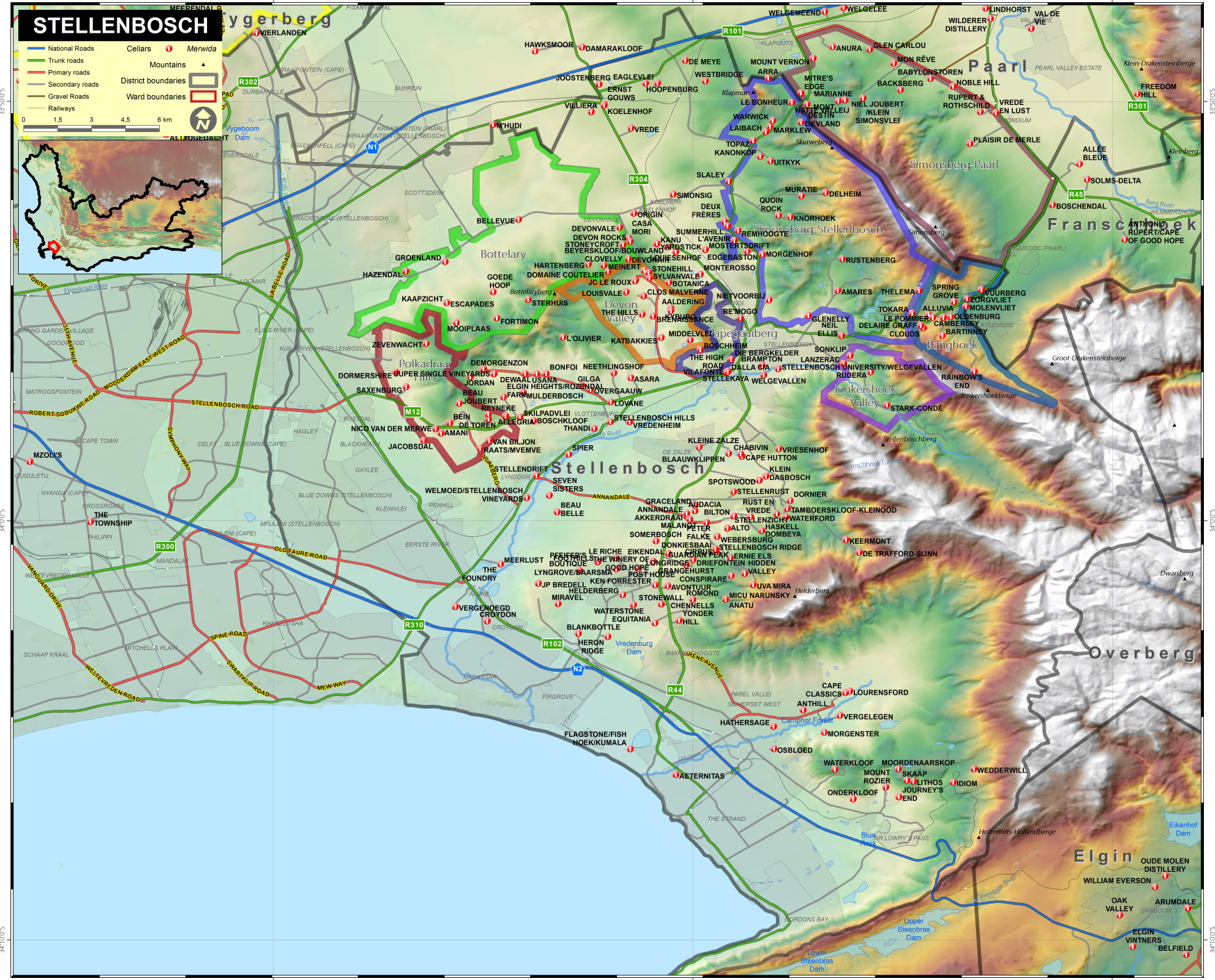
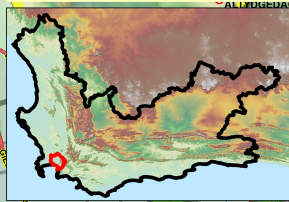
89% Cabernet Sauvignon
8% Petit Verdot
3% Merlot

STELLENBOSCH

- National Roads
 - Trunk roads
 - Primary roads
 - Secondary roads
 - Gravel Roads
 - Railways
- Cellars Merwida
- Mountains
- District boundaries
- Ward boundaries



0 1,5 3 4,5 6 km



18°40'0"E

18°50'0"E

19°0'0"E

33°50'0"S

34°0'0"S

34°10'0"S

33°50'0"E

34°0'0"E

34°10'0"E



The Simonsberg-Stellenbosch ward encompasses several well-known estates and private cellars.



Rustenberg

Estate dates back to 1682

Classic Cape Dutch architecture

Decomposed granite soils

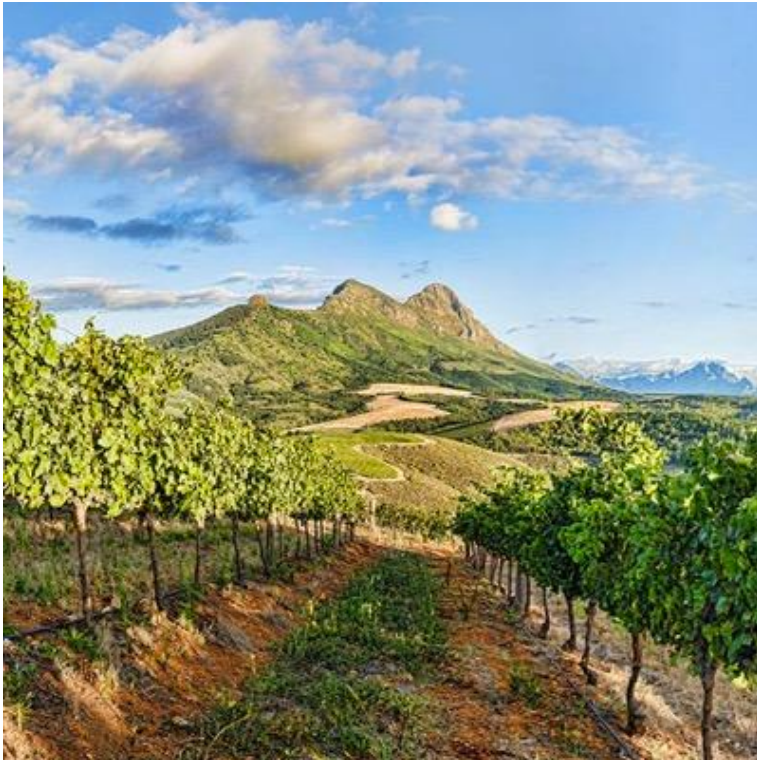
20% new French Oak; 15 months



Kanonkop

Decomposed granite soils

24 months in 50% new French oak



Edgebaston

Shale soils

18 months in 300L new French Oak

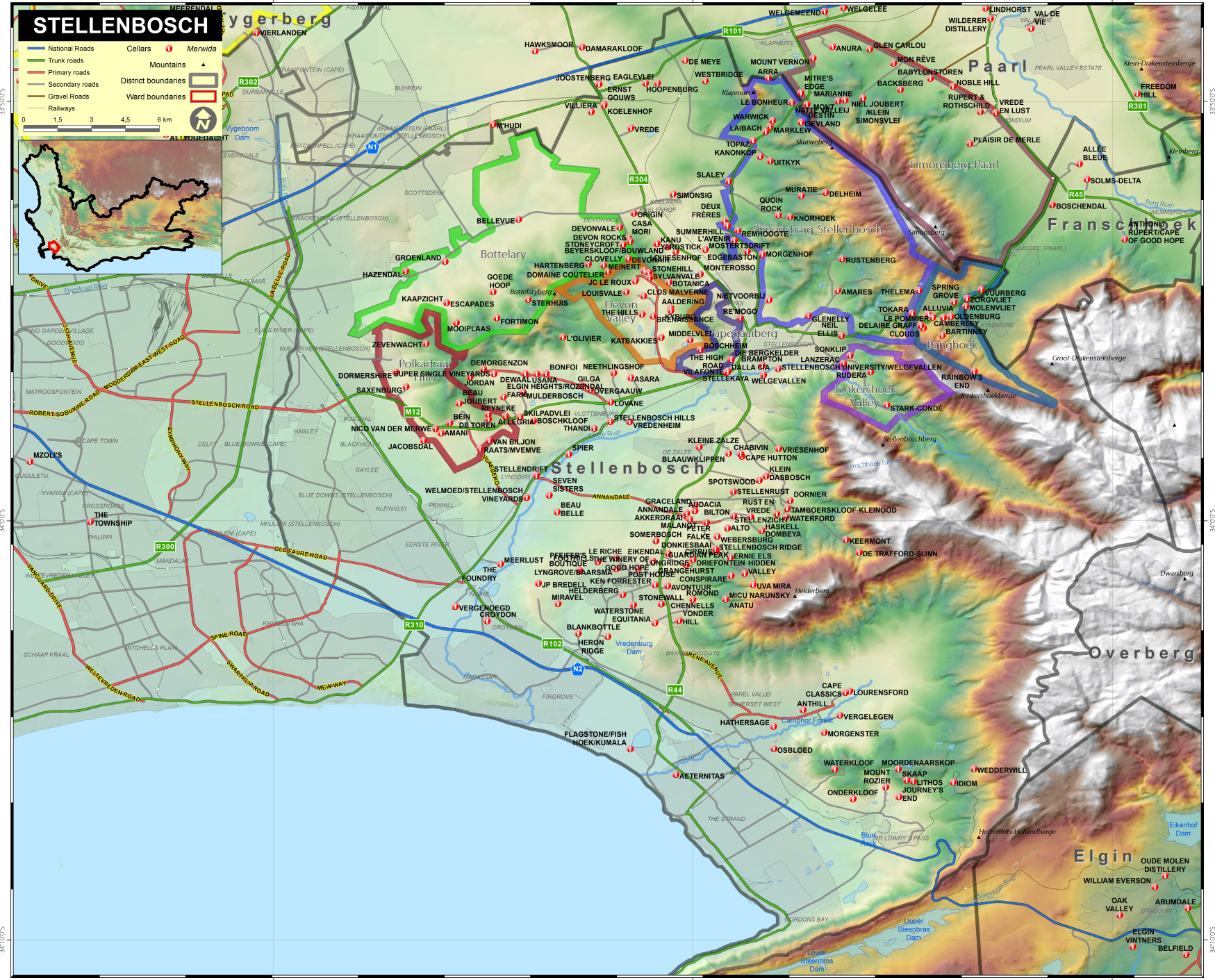
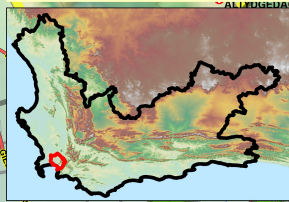
STELLENBOSCH

- National Roads
 - Trunk roads
 - Primary roads
 - Secondary roads
 - Gravel Roads
 - Railways
- Cellars
- Mountains
- District boundaries
- Ward boundaries

- Merwida
- ALTIEDERDAHT



0 1,5 3 4,5 6 km



18°40'0"E

18°50'0"E

19°0'0"E

34°50'0"S

34°0'0"S

34°0'0"S

34°50'0"E

34°0'0"E

34°0'0"E



Four of the seven wards demarcated in the district are situated in the hills of Bottelary: Papegaaiberg, Devon Valley, Bottelary and Polkadraai Hills.



All four of these again benefit from cooling summer breezes.

De Toren



52% Cabernet Sauvignon 16% Malbec. 14% Cabernet Franc 11% Merlot 7% Petit Verdot

12 months in 50% new French Oak (American Oak for the Malbec)



Wines of
**South
Africa**

welcome to our world of discovery