



[f /WOSAUS](#)
[@WOSA\\_USA](#)
[@WOSA\\_USA](#)  
 #drinkSA

1

WOSA

Wine grapes as % of total vineyard area

Variety	2019
Chenin Blanc	18.6%
Colombar(d)	11.5%
Sauvignon Blanc	10.5%
Chardonnay	7.3%
Total white-wine varieties	55.5%
Cabernet Sauvignon	11.0%
Shiraz	10.0%
Pinotage	7.2%
Merlot	5.8%
Total red-wine varieties	

SOURCE: SAWIS

2

WOSA



The most Chenin Blanc plantings in the world

3

---

---

---

---

---

---

---

---

---

---

---

---

---

---

---

---

---

---

---

---

---

---

---

---

---

---

---

---

---

---

---

WOSA



1652 – The Dutch East India Company established a refreshment station to provide for the ships en route to the spice trade in the East

4

---

---

---

---

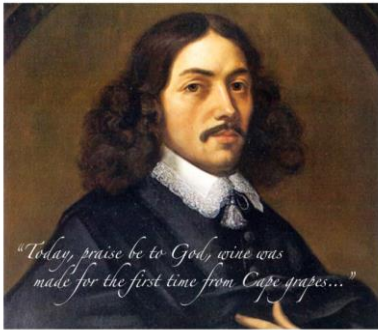
---

---

---

---

WOSA



Jan van Riebeeck's famous diary entry of 2 February 1659

5

---

---

---

---

---

---

---

---

WOSA



1918 – KWV

6

---

---

---

---

---

---

---

---

## Chenin Blanc in South Africa

Year	Hectares	% of total plantings
1978	26,352	26.7%
1988	31,002	33.2%
1998	25,875	25.6%
2008	18,852	18.6%
2018	17,103	18.5%

---

---

---

---

---

---

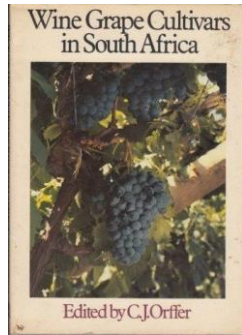
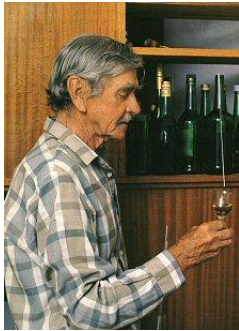
---

---

---

---

7




---

---

---

---

---

---

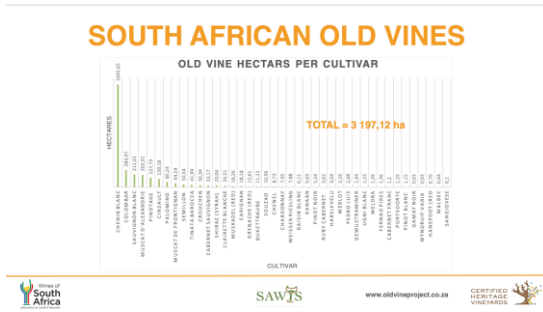
---

---

---

---

8




---

---

---

---

---

---

---

---

---

---

9

WOSA



1990 – Nelson Mandela

10

---

---

---

---

---

---

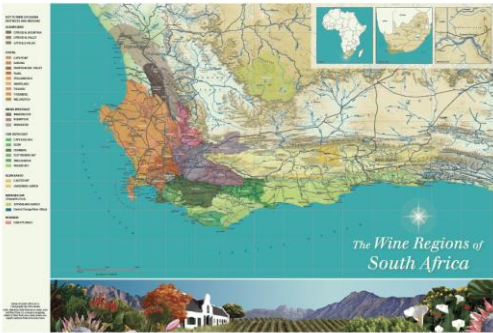
---

---

---

---

WOSA



Wine of Origin Districts

11

---

---

---

---

---

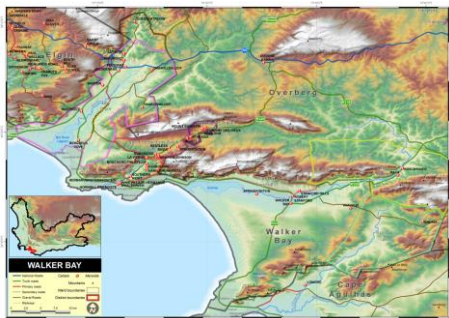
---

---

---

---

---



12

---

---

---

---

---

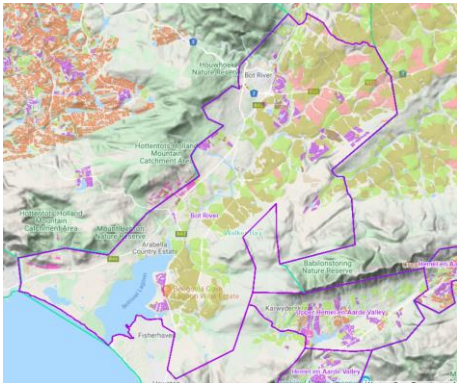
---

---

---

---

---



13

---

---

---

---

---

---

---

---

WOSA



Bot River

14

---

---

---

---

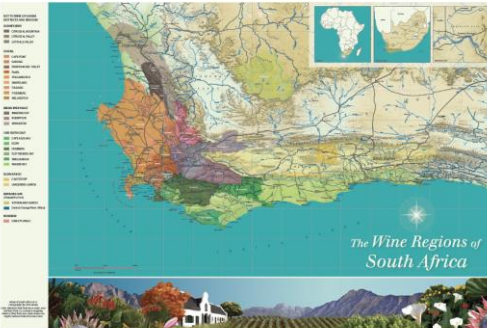
---

---

---

---

WOSA



Wine of Origin Districts

15

---

---

---

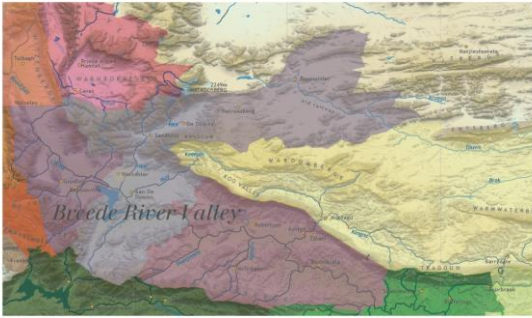
---

---

---

---

---



Breede River Valley Robertson

16

---

---

---

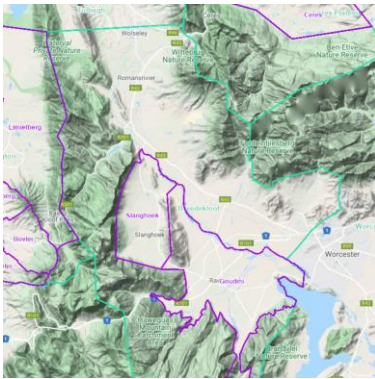
---

---

---

---

---



17

---

---

---

---

---

---

---

---

WOSA



Breedekloof – a traditionally high-yielding region with a recent trend towards smaller batches

18

---

---

---

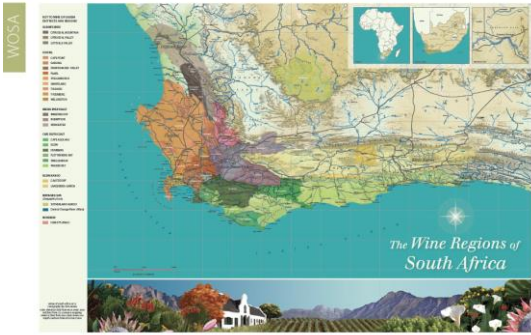
---

---

---

---

---



Wine of Origin Districts

19

---

---

---

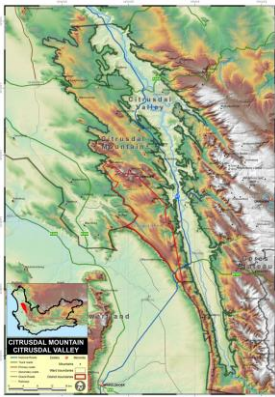
---

---

---

---

---



20

---

---

---

---

---

---

---

---



21

---

---

---

---

---

---

---

---

WOSA



Olifants River

22

---

---

---

---

---

---

---

---



23

---

---

---

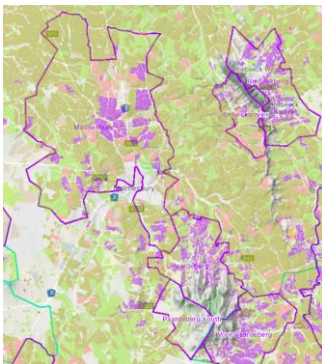
---

---

---

---

---



24

---

---

---

---

---

---

---

---



WOSA



Swartland

---

---

---

---

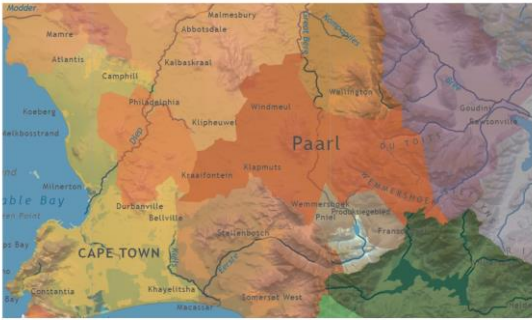
---

---

---

---

25



Coastal Region Paarl

---

---

---

---

---

---

---

---

26



---

---

---

---

---

---

---

---

27



It is the second largest in the world, the biggest being Uluru (previously Ayers Rock) in Australia. This is formed by three rounded domes, the most prominent of which is named Paarl Rock.

Coastal Region Paarl

28

---

---

---

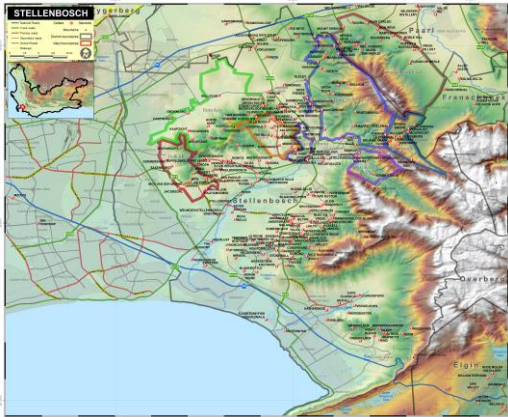
---

---

---

---

---



29

---

---

---

---

---

---

---

---

WOSA



Stellenbosch

30

---

---

---

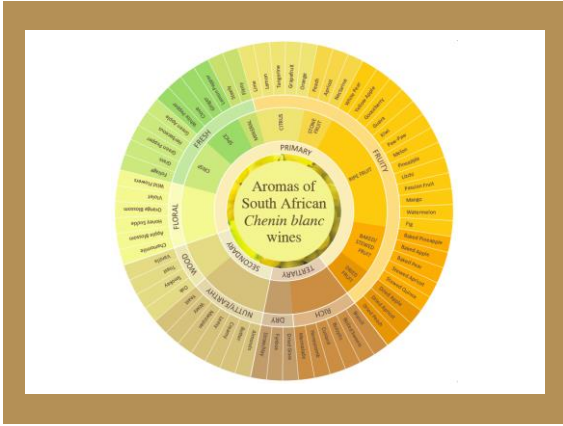
---

---

---

---

---



31

---

---

---

---

---

---

---

---

The Chenin Blanc Association's (previous classification) of the six recognized styles:

- Fresh & fruity (less than 9 g/ℓ residual sugar)
- Rich & ripe – unwooded (less than 9 g/ℓ residual sugar)
- Rich & ripe – wooded (less than 9 g/ℓ residual sugar)
- Rich & ripe – slightly sweet (between 9 and 30 g/ℓ residual sugar)
- Sweet (more than 30 g/ℓ residual sugar)
- Sparkling Tank fermented or Cap Classique

32

---

---

---

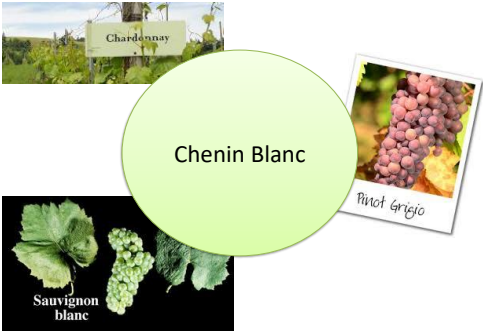
---

---

---

---

---



33

---

---

---

---




---

---

---

---



 /WOSAUS  @WOSA\_USA  @WOSA\_USA

#drinkSA

---

---

---

---

---

---

---

---