



1



2



3



Typical flavor profile: Oregon Pinot Gris

Dry to slightly off-dry
 Body: medium/medium-plus
 Acidity: medium
 (Possible) some phenolic bitterness

Aromas and Flavors:
 Citrus fruit: lemon, lime
 Other fruit: green apple, yellow apple, peach, pear, nectarine, apricot, melon
 Floral: white flowers
 (Less common): lees, earthy/mushroom, mineral

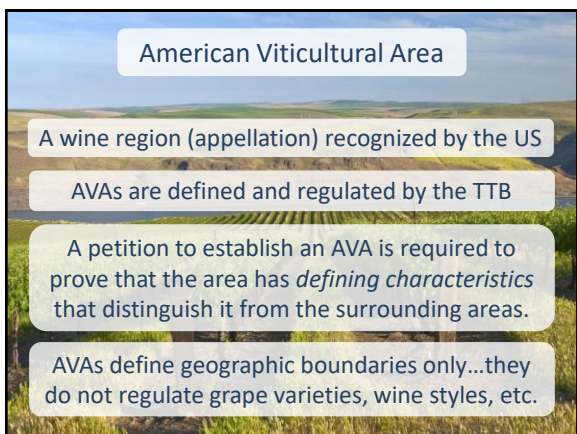
4

Here are my tasting notes for
King Estate Willamette Valley Pinot Gris 2018

- 13.5% abv
- Temperature-controlled, stainless steel ferment
- Aging: four months sur lie
- Aromas:
 - Fruit: Peach, pear, lime, nectarine
 - Other: Wildflowers, crushed gravel
- On the palate:
 - Viscous, medium-plus body
 - Lively finish, lingering aromas of tropical fruit/papaya



5



American Viticultural Area

A wine region (appellation) recognized by the US

AVAs are defined and regulated by the TTB

A petition to establish an AVA is required to prove that the area has *defining characteristics* that distinguish it from the surrounding areas.

AVAs define geographic boundaries only...they do not regulate grape varieties, wine styles, etc.

6

There are currently ___ AVAs in the United States.



7



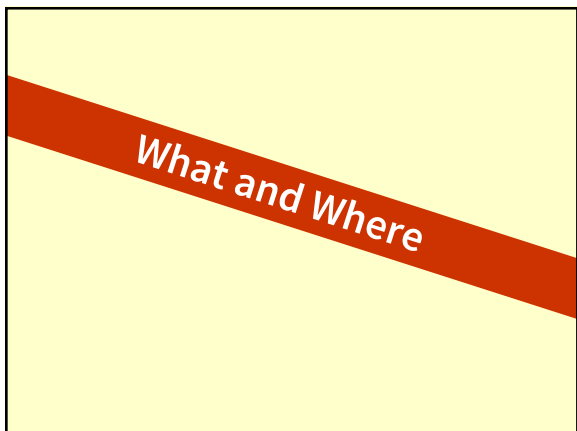
8



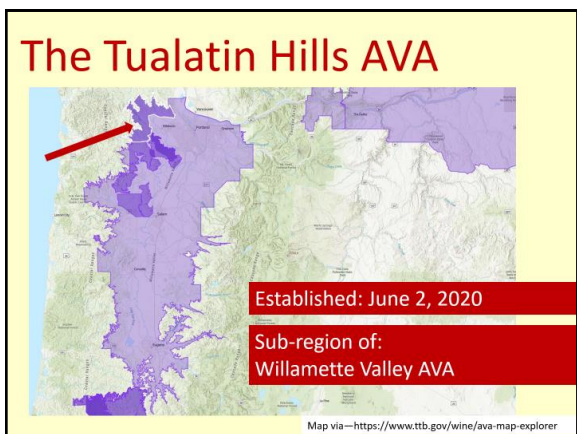
9



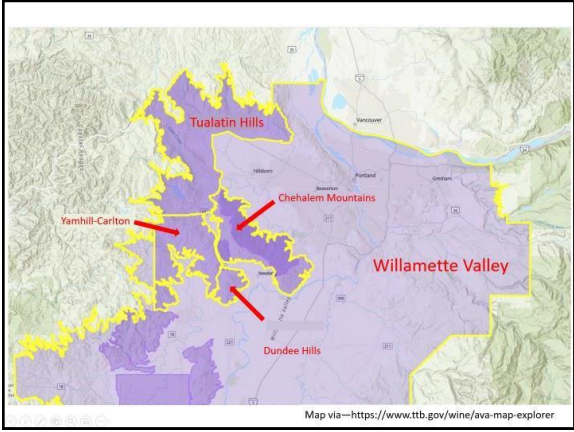
10



11



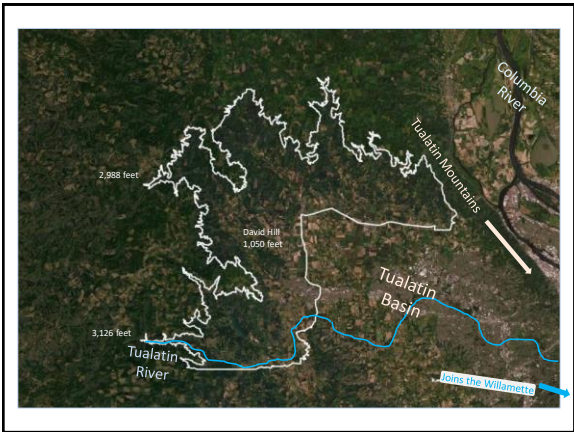
12



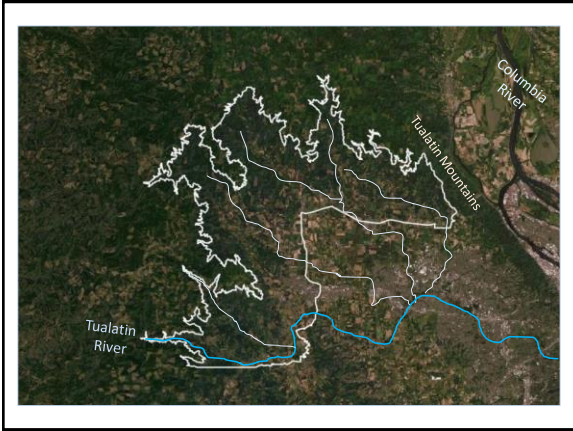
13



14



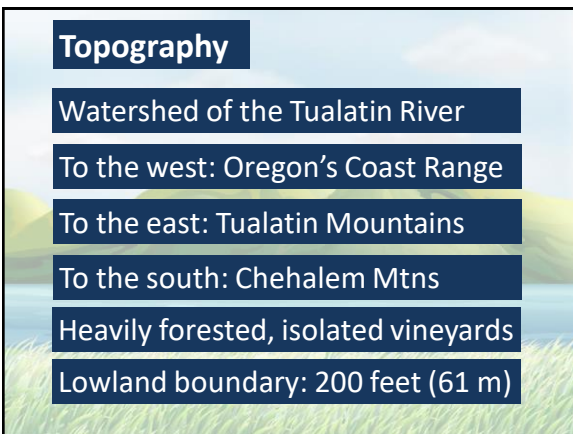
15



16



17



18

Soils

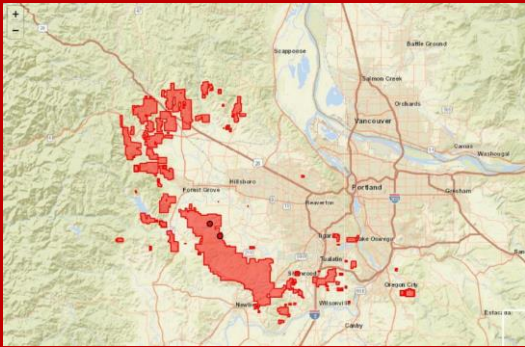
Laurelwood Soils:
Wind-blown silt (loess) over
fractured basalt

Low-to-moderate fertility

Deep soils (up to 100 feet) and
moderate clay content eliminate
the need for irrigation

19

Laurelwood Soils



California Soil Research Lab: <https://csoilresource.lwr.ucdavis.edu>

20

Climate



Cooler springs, warmer autumns, less
rainfall than surrounding areas

Some protection (rain shadow) from
the Oregon Coast Range

Harvest typically 2 weeks later than
surrounding AVAs

21



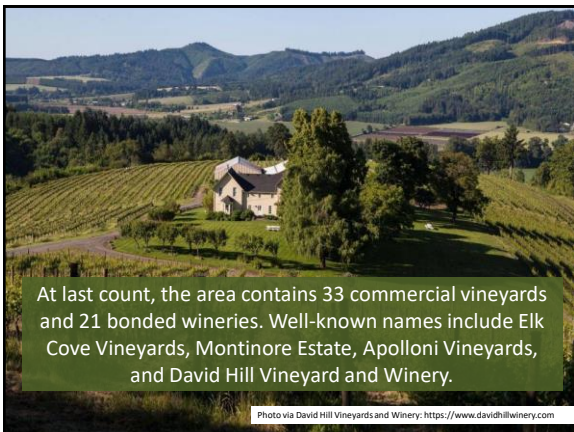
22



The Tualatin Hills AVA covers 144,000 total acres (58,275 ha); of these, about 1,009 acres (408 ha) are planted to vine. Leading varieties include Pinot Noir, Pinot Gris, Pinot Blanc, Chardonnay, and Gewürztraminer

Photo via Elk Cove Vineyards: <https://elkcove.com>

23



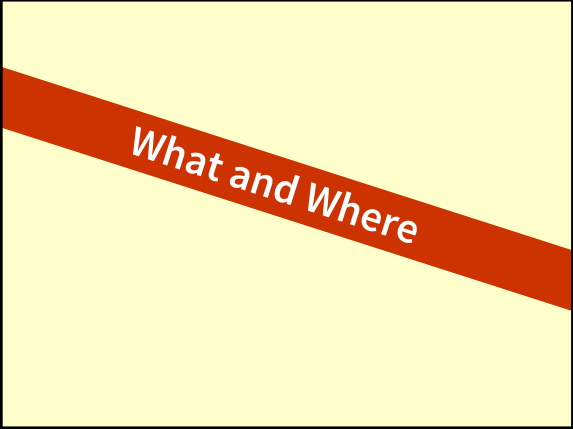
At last count, the area contains 33 commercial vineyards and 21 bonded wineries. Well-known names include Elk Cove Vineyards, Montinore Estate, Apolloni Vineyards, and David Hill Vineyard and Winery.

Photo via David Hill Vineyards and Winery: <https://www.davidhillwinery.com>

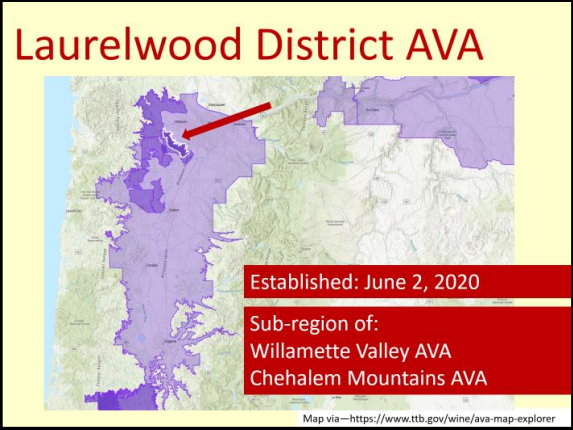
24



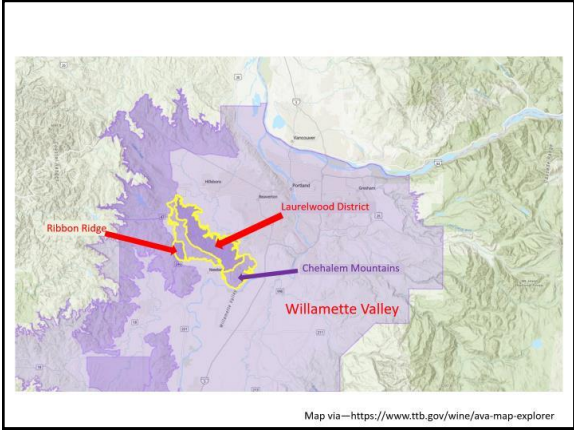
25



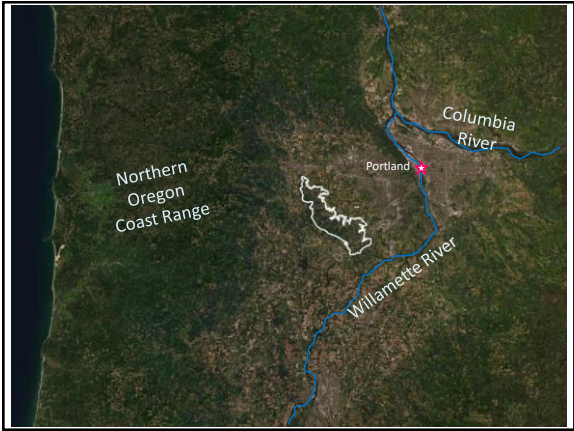
26



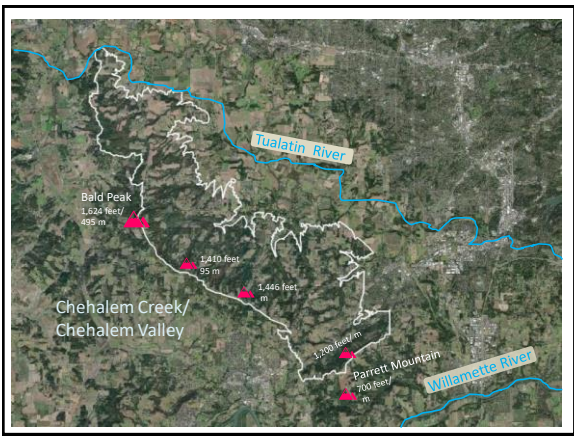
27



28



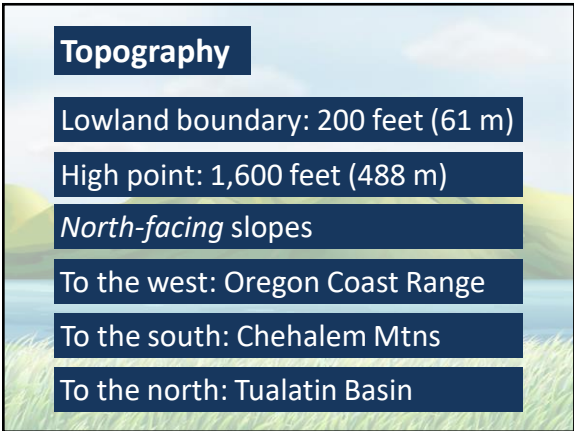
29



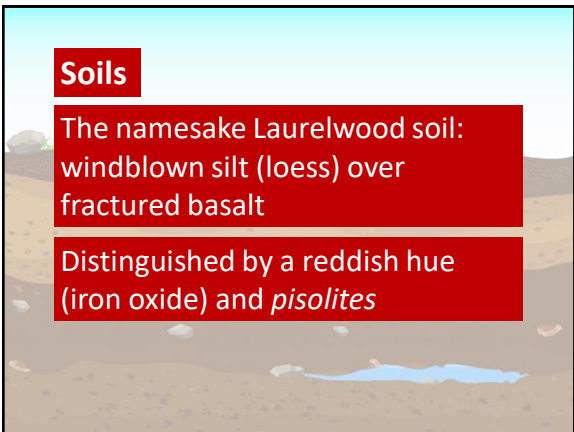
30



31




32



33

Climate

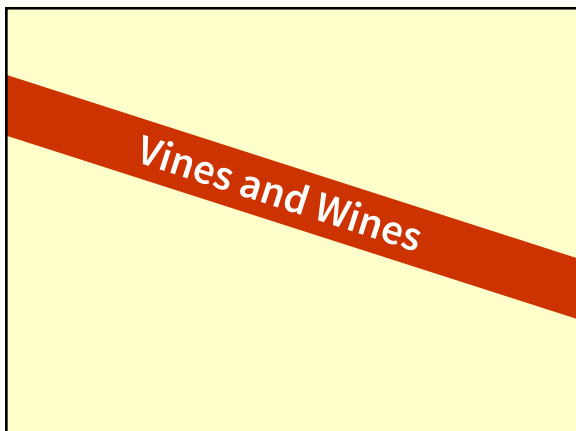


Influenced by winds from the Columbia Gorge

Rain shadow created by the spine of the Chehalem Mountains

Lower rainfall than the AVAs to the south

34



Vines and Wines

35

The Laurelwood District AVA encompasses 33,600 total acres (13,596 ha). With 975 acres (396 ha) planted to vines, leading grapes include Pinot Noir, Chardonnay, and Pinot Gris.




Photo via Ponzal Vineyards: www.ponzalvineyards.com

36

At last count, the Laurelwood District AVA contains 70 commercial vineyards and more than 20 wineries. These include Ponzi Vineyards, Raptor Ridge Winery, Dion Vineyard, and Freja Cellars.

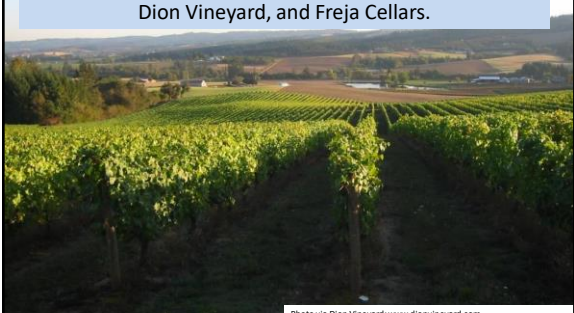


Photo via Dion Vineyard: www.dionvineyard.com

37

Taste-along!



38

Let's talk about California Viognier



Introduced to California in the mid-1980s
At last count: 3,000 acres/1,215 ha
Leading areas: Amador, Lodi, Santa Barbara

39

Typical flavor profile: California Viognier


Dry to slightly off-dry
 Body: medium and higher
 Acidity: low to medium
 (Typically) some phenolic bitterness

Aromas and Flavors:
 Fruit: apricot, peach
 Ripe Citrus: Mandarin orange, tangerine
 Ripe Tropical Fruit: pineapple, mango, fruit cocktail
 Floral: honeysuckle, jasmine, rose, orange blossom, perfume
 Sweet Spice: vanilla, cardamom, gingerbread

40

Here are my tasting notes for
Calera Mount Harlan Viognier 2017

- 14.5% abv
- Slow, cool (60°F/15.5°C) ferment, 100% MLF
- 14 months aging:
 - 20% stainless steel, 20% concrete, 60% neutral French Oak
- Aromas:
 - Fruit: peach, nectarine, lemon peel
 - Other: honeysuckle, jasmine
- On the palate:
 - Med acidity (3.35 pH), some bitterness
 - Long finish (lemon meringue)

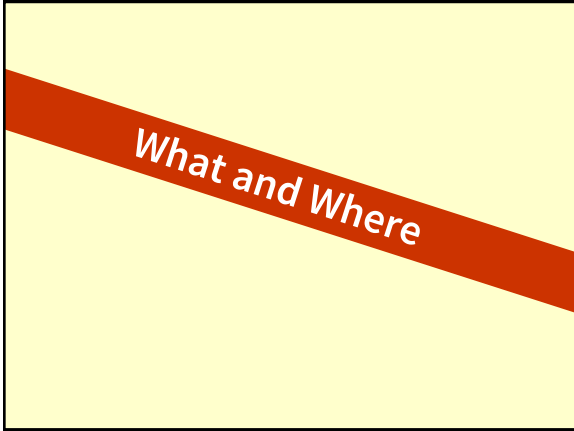


41

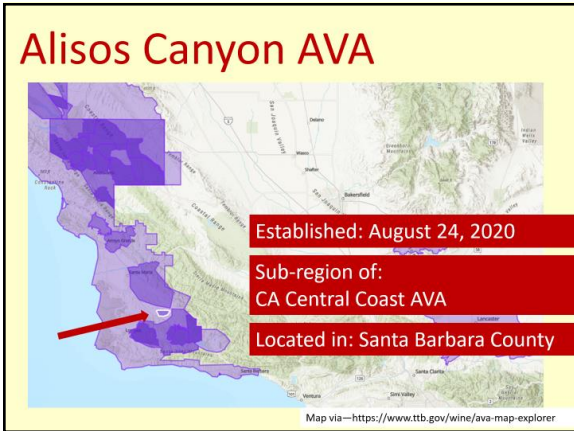


Alisos Canyon AVA—California

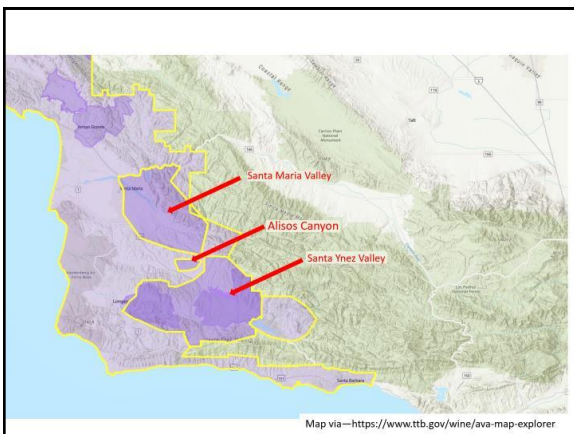
42



43



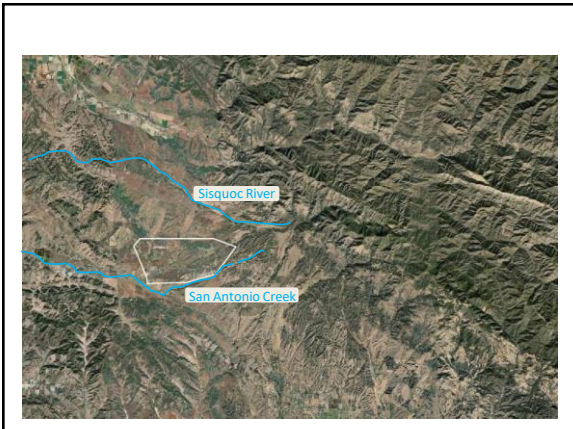
44



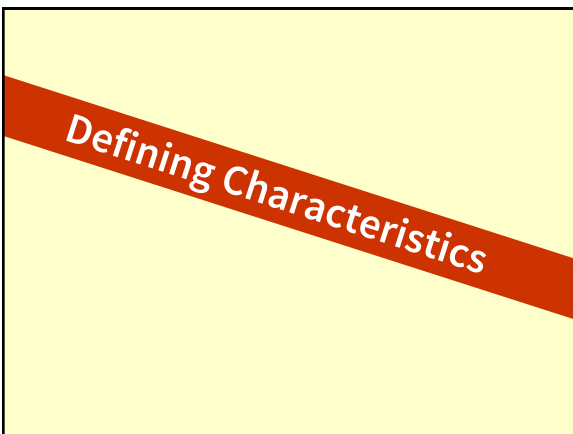
45



46



47



48

Topography

20 miles inland from the Ocean

Defined by San Antonio Creek, which runs directly from the mouth of Alisos Canyon to the sea

Elevation: 673 feet/205 meters to 1,412 feet/430 meters

49

Soils

Weathered sandstone (sand) and shale (Paso Robles formation)

A rare (for California) streak of limestone (along the center)

Some clay

50

Climate

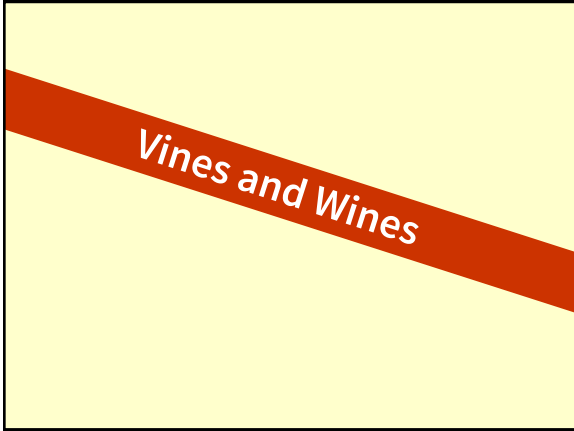


Cooling marine influence funneled along San Antonio Creek

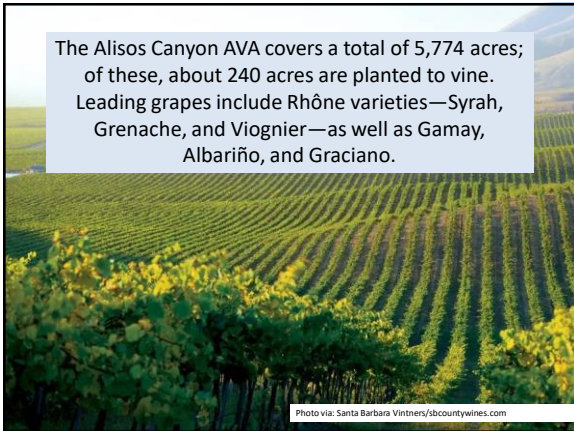
Among the coolest of the 7 Santa Barbara AVAs (Winkler Region II)

...slightly warmer than regions to the west

51



52



53



54

Taste-along!



55

Let's talk about Washington State Syrah



First planted in 1986 at Red Willow Vineyard (Yakima Valley)
 #3 Red Grape in Washington
 Currently: 4,565 acres/1,847 ha

56

Typical flavor profile: Washington Syrah

Dry
 Full-bodied
 Acidity: Medium to medium-high
 Medium-high (or higher) tannins


Aromas and Flavors:
 Fruit: Blackberry, Currant, Blueberry, Plum, Fig, Raisin, Date
 Spice: Black Pepper, Dried Savory Spices, Licorice
 Floral: Dried flowers, Lavender
 Herbal: Eucalyptus, Tobacco, Dried Herbs, Rosemary
 Other: Chocolate/Cocoa, Coffee, Smoke

57

Here are my tasting notes for
Powers Winery Washington State Syrah 2017

- 88.5% Syrah, 9% Merlot, 2.5% Viognier (co-fermented)
- 14.5% abv
- Stainless ferment
- Aging: 22 months—French oak (mixed new & used)
- Aromas:
 - Fruit: blackberry, blueberry, currant
 - Other: herbs, tobacco, leather, licorice
- On the palate:
 - Rich, full body, savory flavors
 - Long finish (blueberry & herb)

POWERS



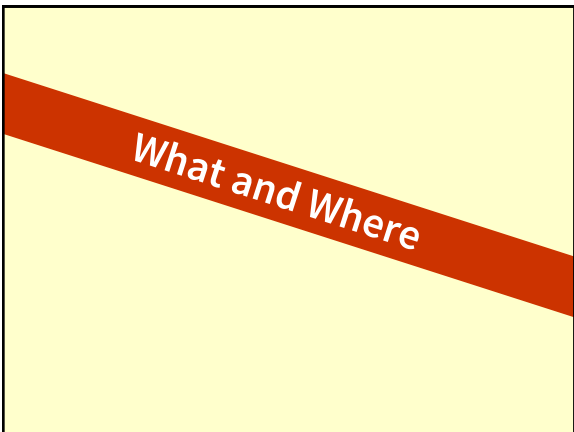
SYRAH
COLUMBIA VALLEY

58



Royal Slope AVA—Washington State

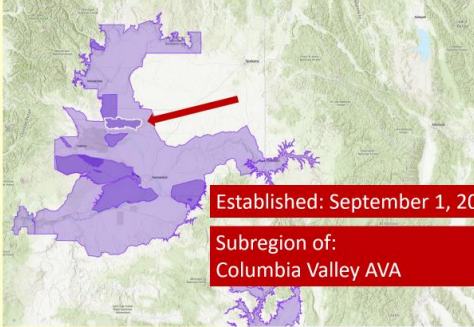
59



What and Where

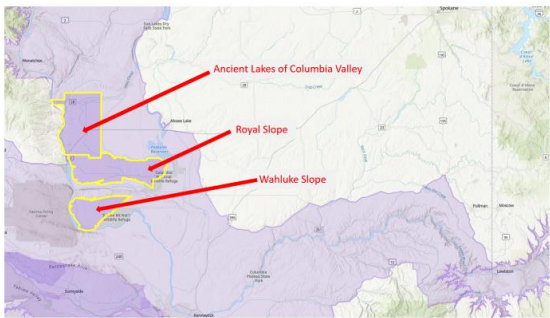
60

Royal Slope AVA



Map via—<https://www.ttb.gov/wine/ava-map-explorer>

61



Map via—<https://www.ttb.gov/wine/ava-map-explorer>

62



63



64



65

Topography

Located on the south-facing slopes of the Frenchman Hills

Gentle slope gradient/3° to 15°

Elevation: 1,756 feet (535 meters) to 320 feet (107 meters)

66

Soils

Wind-deposited silt (loess) and sand atop sedimentary deposits from the Missoula Floods

Some areas: very thin topsoil (10" to 20") over basalt

Frenchman Hills: coarser soils with very low organic content

67

Climate

Cooler than the Wahluke Slope; warmer than Ancient Lakes

Avg. (only) 9 *very hot* days per growing season (over 95°F/35°C)

Long growing season: avg. 234 days between hard freezes



68

Vines and Wines

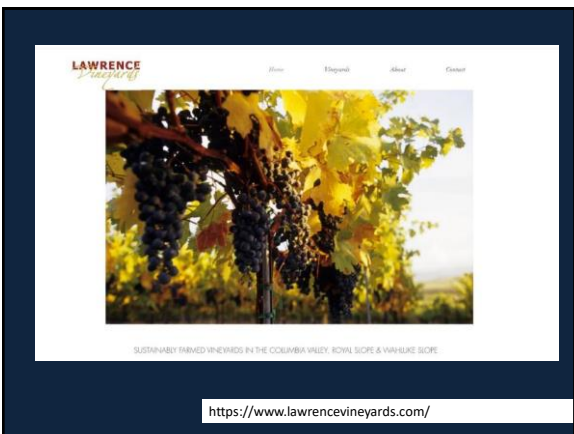
69



70



71



72

Sean P. Sullivan - Washington Wine Report

HOME WINE REVIEWS RATING SYSTEM ABOUT + SUBSCRIBE CONTACT

Charles Smith Royal City Syrah - A Record Breaking Wine

February 11, 2010 9 Comments

Royal City

When highly respected and highly rated, Washington red wines have had something of a glass ceiling in wine Spectator over the years. As noted previously, every top score has been a high water mark for Washington in this publication. In fact, of the many Washington wines reviewed by Wine Spectator each year, only seven wines from three wineries, Cananda, Lawrence, and Cole Riverwinery, have ever received a score of 90 points. This figure has a 600-year history.

This is nothing to be ashamed of. Rather it is an indication of the rare air of each score in this publication. To wit, in the most recent twelve months, only 38 out of 8,127 red wines reviewed by Wine Spectator have received scores of 90 points or higher (91% for those being back at home). That said, no Washington wine has ever been in that group.

Charles Smith Wines Royal City Syrah 2006 100 Points, Wine Enthusiast

Wine Spectator's Wine Spectator has awarded Charles Smith's 2006 Royal City Syrah a 97 point.

First ever 100-point score from Wine Enthusiast for a Washington wine

Stoneridge Vineyard (managed by Lawrence Vineyards)

<https://www.wawinereport.com/2010/02/charles-smith-royal-city-syrah-record.html>

73

Candy Mountain AVA—Washington State

74

What and Where

75

Candy Mountain AVA

Established: September 24, 2020

Subregion of:
Yakima Valley AVA
Columbia Valley AVA

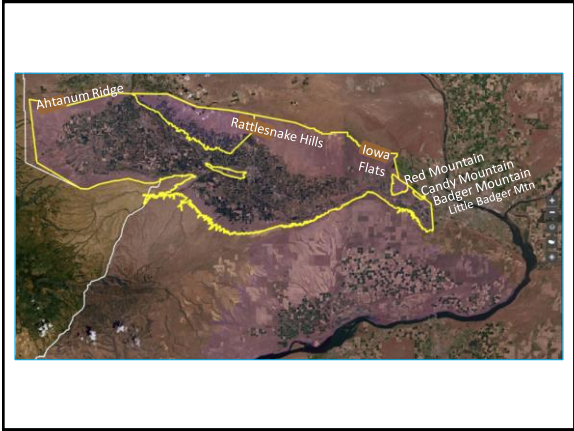
Map via—<https://www.ttb.gov/wine/ava-map-explorer>

76

Map via—<https://www.ttb.gov/wine/ava-map-explorer>

77

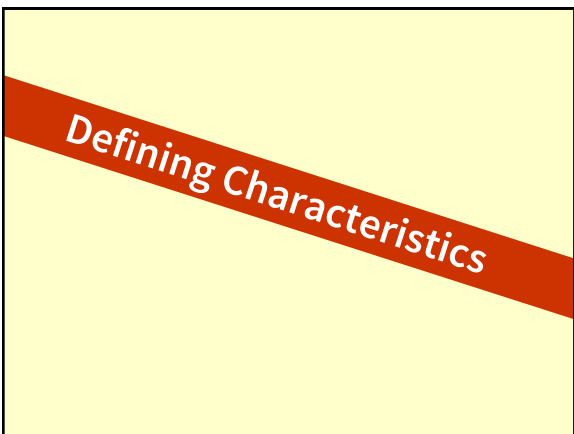
78



79



80



81

Topography

Located on the south/southwest facing slopes of Candy Mountain

Gentle slope gradient/2° to 20°

Elevation: 640 feet (195 meters) to 1,360 feet (415 meters)

82

Soils

Wind-deposited silt (loess) and sand atop sedimentary deposits from the Missoula Floods

Basalt bedrock

Topsoils: thinner than the surrounding areas

83

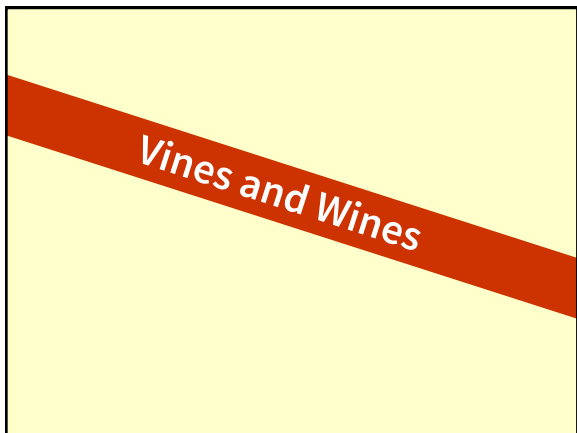
Climate

Overall, slightly warmer than surrounding areas (4° to 12° F)

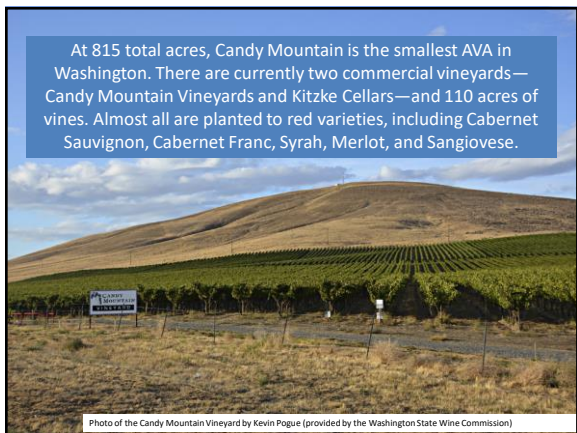
Lower risk of spring/harvest frost

Wind: more frequent and higher velocity

84



85



At 815 total acres, Candy Mountain is the smallest AVA in Washington. There are currently two commercial vineyards—Candy Mountain Vineyards and Kitzke Cellars—and 110 acres of vines. Almost all are planted to red varieties, including Cabernet Sauvignon, Cabernet Franc, Syrah, Merlot, and Sangiovese.

Photo of the Candy Mountain Vineyard by Kevin Pogue (provided by the Washington State Wine Commission)

86



Kitzke Cellars—a family-owned, boutique winery—is the only bonded winery located in the Candy Mountain AVA.

Photo via www.kitzkecellars.com

87

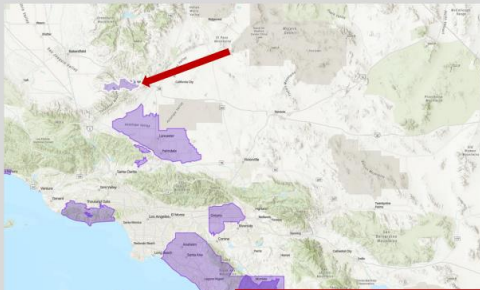
The grapes from the Candy Mountain Vineyards have (historically) been sold to Long Shadows Winery and L'Ecole 41 Winery, which produces a vineyard-designated Candy Mountain Vineyard Red Wine.



<https://www.lecole.com/wine/2014-candy-mountain-vineyard-red/>

88

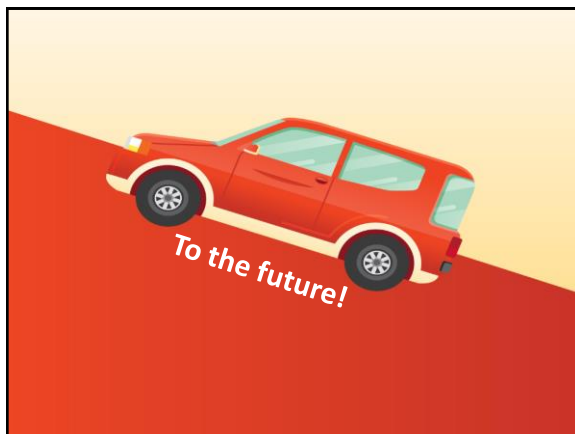
Tehachapi Mountains AVA



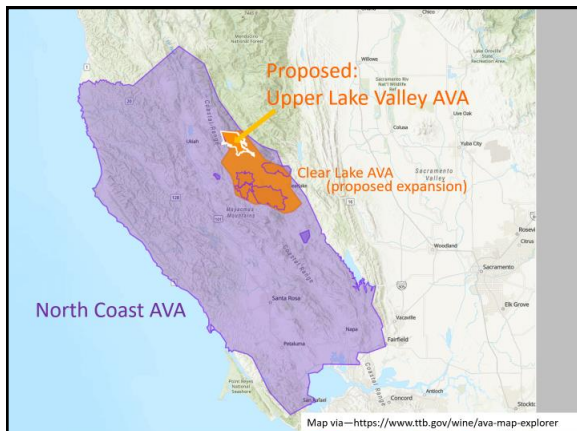
Established: November 18, 2020

Map via - <https://www.ttbgov/wine/ava-map-explorer>

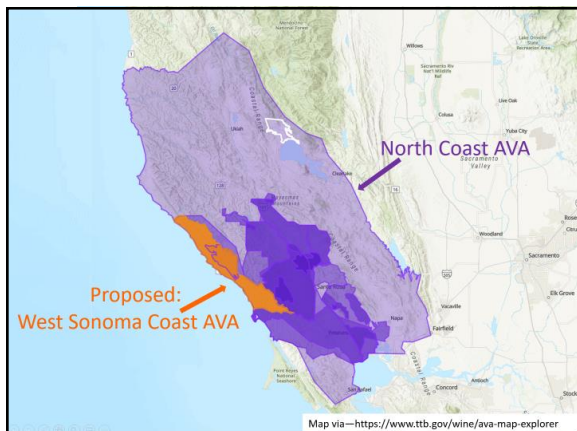
89



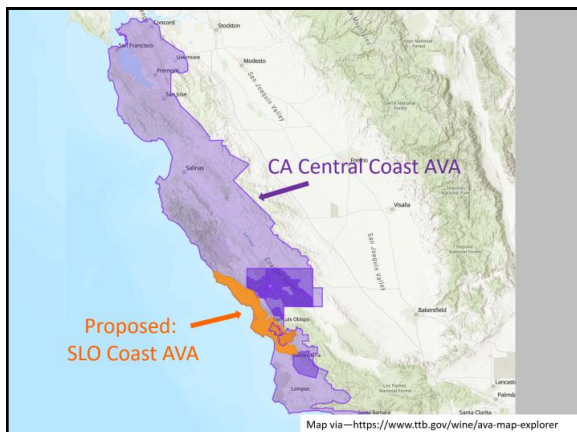
90



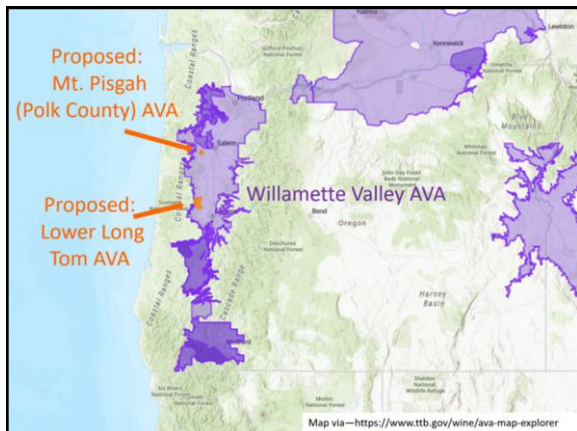
91



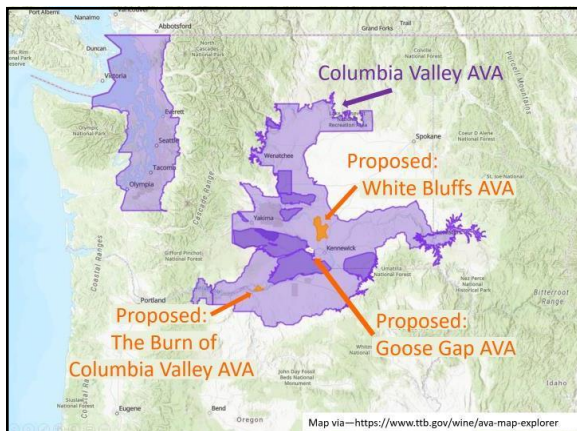
92



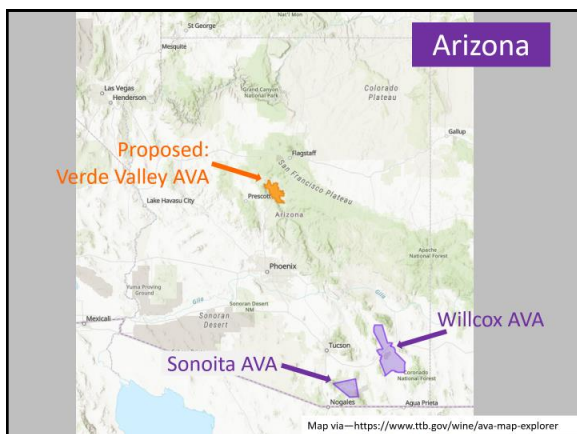
93



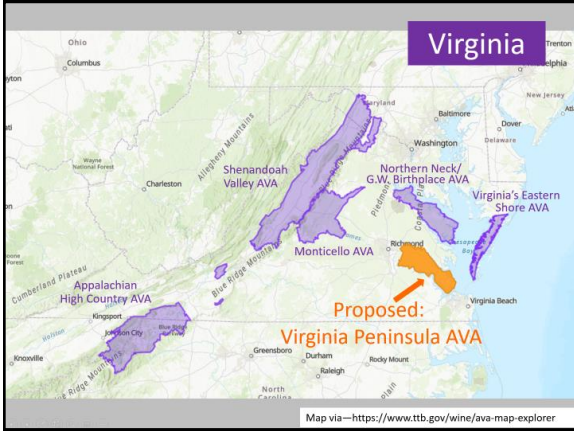
94



95



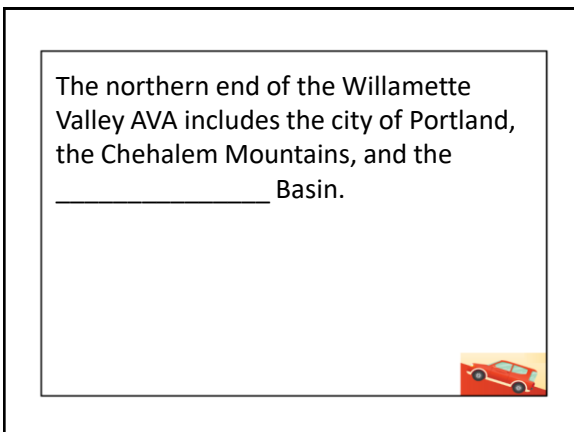
96



97



98



99

What term is used to describe fine, wind-blown soils?



100

Oregon's two newest AVAs are rich with what specific type of loess soil?




101

Where (in what county) is the Alisos Canyon AVA located?




102

The Alisos Canyon AVA follows the valley of _____ Creek.




103

What is the smallest AVA in Washington State?



104

What AVA is located north of Wahluke Slope?



105

The _____ River, which is almost one mile wide at this point, defines the west boundary of the Royal Slope AVA.



106

Focusing on California, Oregon, or Washington State, name one (pending) AVA that is at the proposal stage:



107

Study Tool

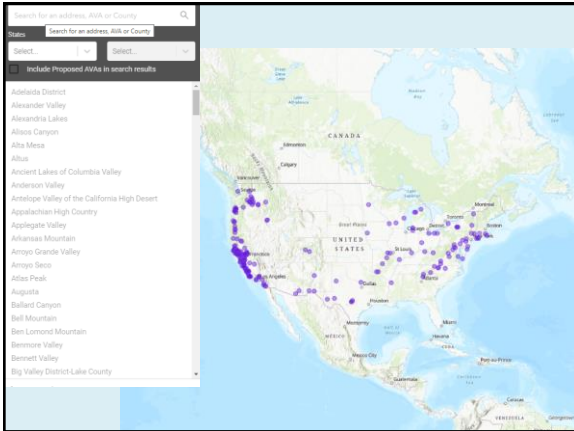


AVA Explorer Map

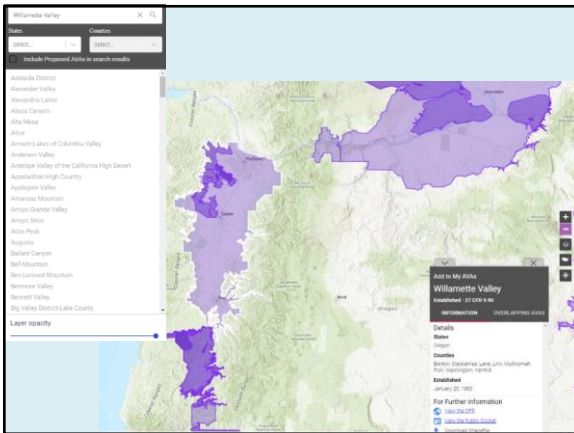
<https://www.ttb.gov/wine/ava-map-explorer>



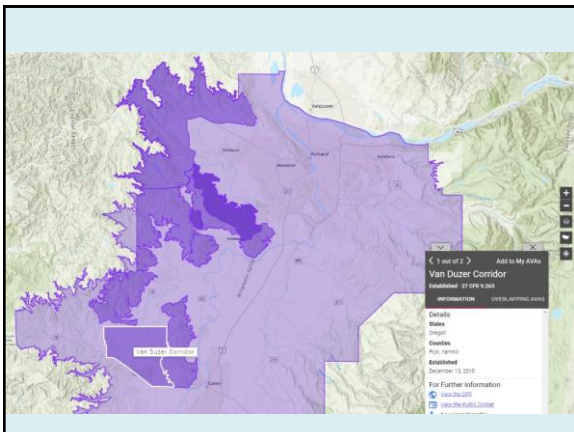
108



109



110



111

References/for more information:



AVA Explorer Map: <https://www.ttb.gov/wine/ava-map-explorer>

Laurelwood District/Tualatin Hills:
<https://www.regulations.gov/docket/TTB-2019-0003/document>
<http://winewitandwisdomswe.com/2020/06/03/welcome-to-the-world-tualatin-hills-and-laurelwood-district-avas/>

Alisos Canyon:
<https://www.regulations.gov/docket/TTB-2019-0007/document>
https://sbcountywines.com/portfolio_page/alisos-canyon/
<http://winewitandwisdomswe.com/2020/08/26/welcome-to-the-world-alisos-canyon-ava-and-the-goldilocks-rhone-zone/>

Candy Mountain:
<https://www.washingtonwine.org/wine/facts-and-stats/regions-and-avas/candy-mountain>
<https://www.regulations.gov/docket/TTB-2019-0006/document>
<http://winewitandwisdomswe.com/2020/09/25/welcome-to-the-world-candy-mountain-ava/>

Royal Slope:
<https://www.regulations.gov/docket/TTB-2019-0008/document>
<http://winewitandwisdomswe.com/2020/09/02/welcome-to-the-world-royal-slope-ava/>

112



113



114