

1

---

---

---

---

---

---

---

---



2

---

---

---

---

---

---

---

---



3

---

---

---

---

---

---

---

---

# GALICIA



4

---

---

---

---

---

---

---

---



5

---

---

---

---

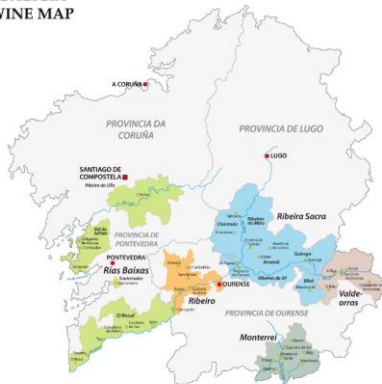
---

---

---

---

## GALICIA WINE MAP



6

---

---

---

---

---

---

---

---

# GALICIA

Mild climate, marine influence; part of *Green Spain*

Well-known for white wines (Albariño, Treixadura, Godello), some Mencía-based red (and rosado)

Five DOs:

Rías Baixas, Ribeiro, Ribeira Sacra, Valdeorras, Monterrei

Known for:

- Celtic culture
- Oceans-rivers-estuaries-bays
- Textiles, fishing, canning, livestock, forestry, automobiles
- *The Way*: the Camino de Santiago

7

---

---

---

---

---

---

---

---



8

---

---

---

---

---

---

---

---



9

---

---

---

---

---

---

---

---



10

---

---

---

---

---

---

---

---



11

---

---

---

---

---

---

---

---



12

---

---

---

---

---

---

---

---



**Queimada**

*The Fire Drink of Galicia*  
 1 liter orujo  
 2/3 cup granulated sugar  
 Zest of 1 medium lemon (cut in strips)  
 4 T. coffee beans

Photo credit: Jose A. Bernat Bacete / Getty Images

13

---

---

---

---

---

---

---

---



**Cape Finisterre**

14

---

---

---

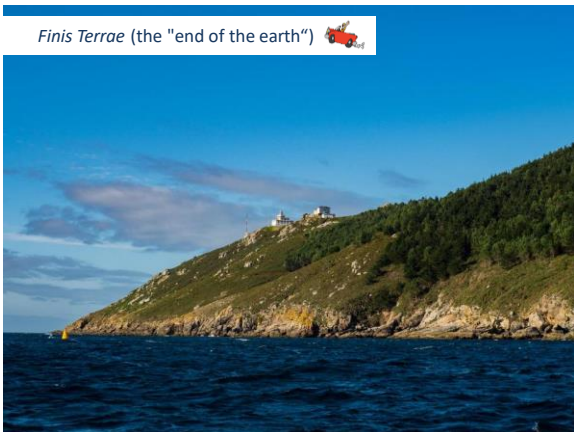
---

---

---

---

---



*Finis Terrae* (the "end of the earth")

15

---

---

---

---

---

---

---

---



16

---

---

---

---

---

---

---

---



17

---

---

---

---

---

---

---

---



18

---

---

---

---

---

---

---

---



19

---

---

---

---

---

---

---

---



20

---

---

---

---

---

---

---

---



21

---

---

---

---

---

---

---

---



Tarta de Santiago

Photo credit: bascofinefoods.com

22

---

---

---

---

---

---

---

---



23

---

---

---

---

---

---

---

---



24

---

---

---

---

---

---

---

---



Parque Nacional Marítimo-Terrestre das Illas Atlánticas de Galicia/Cies Islands



25

---

---

---

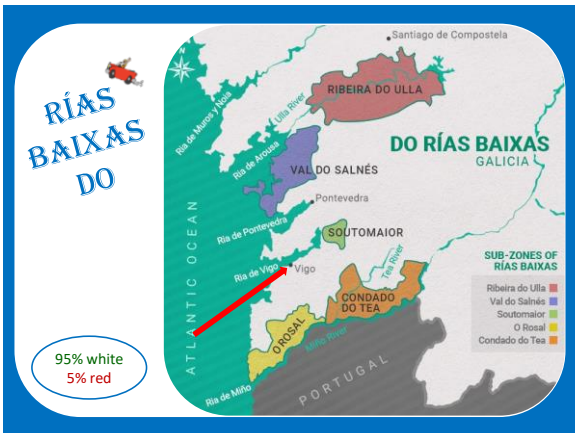
---

---

---

---

---



26

---

---

---

---

---

---

---

---



Rías Baixas DO

Located along the “lower estuaries” of Galicia’s southwest coastline (just north of Portugal)

Authorized for: Varietal Albariño (100%), Blanco, Blanco Barrica, Tinto, and Espumoso

Albariño rules!

Best known for Albariño-based dry white wines with intense aromatics, crisp acidity, and floral notes

27

---

---

---

---

---

---

---

---

**Albariño in Rías Baixas**

Native to the area (aka *Alvarinho*)

Vigorous, thick-skinned, thrives in marine climates

Good acidity, aromas of fruit (lemon, grapefruit, orange peel, nectarine), flowers (honeysuckle, white flowers), herbs (bergamot, basil), and salinity/wet stones/minerality

Red grapes are rare, but include Mencia, Brancellao, & Pedral

Other white grapes (accessory varieties) allowed include Godello, Loureira, and Treixadura

28

---

---

---

---

---

---

---

---

# LET'S TASTE!



29

---

---

---

---

---

---

---

---

*Here are my tasting notes for Bodegas Fillaboia Albariño Rías Baixas 2020:*

- 13% abv
- 100% Albariño
- Temperature-controlled, stainless steel ferment
- 6 months lees aging
- Aromas:
  - Fruit: Apple, mango, pineapple, citrus
  - Other: Floral, wet gravel, lees
- On the palate:
  - Fresh acidity, well-balanced, nice structure
  - Persistent finish (hint of lemon peel bitterness)



30

---

---

---

---

---

---

---

---



31

---

---

---

---

---

---

---

---



32

---

---

---

---

---

---

---

---



33

---

---

---

---

---

---

---

---

Catedral do San Martiño



34

---

---

---

---

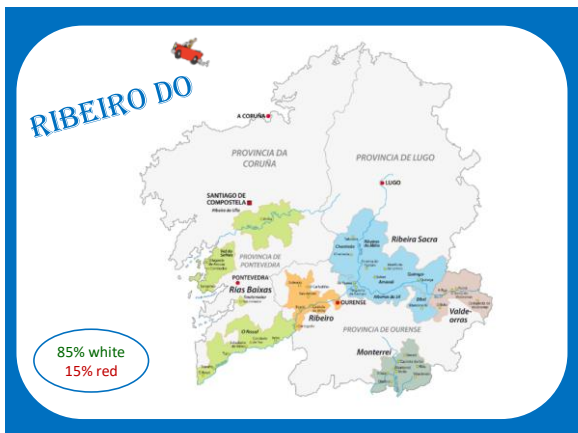
---

---

---

---

RIBEIRO DO



35

---

---

---

---

---

---

---

---



36

---

---

---

---

---

---

---

---



37

---

---

---

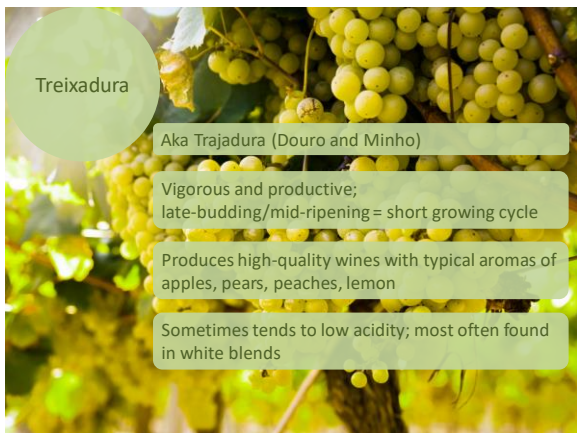
---

---

---

---

---



38

---

---

---

---

---

---

---

---



39

---

---

---

---

---

---

---

---



 Castelo de Monterrei

40

---

---

---

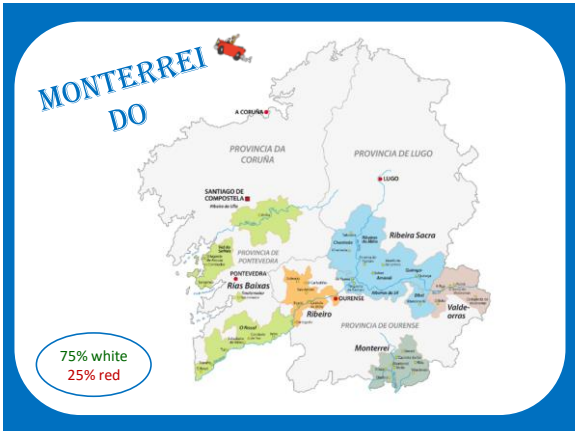
---

---

---

---

---



41

---

---

---

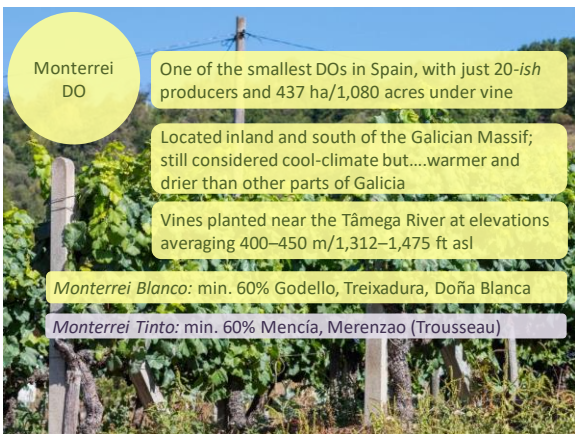
---

---

---

---

---



42

---

---

---

---

---

---

---

---



43

---

---

---

---

---

---

---

---



44

---

---

---

---

---

---

---

---



45

---

---

---

---

---

---

---

---



The Sil River/Río Sil

46

---

---

---

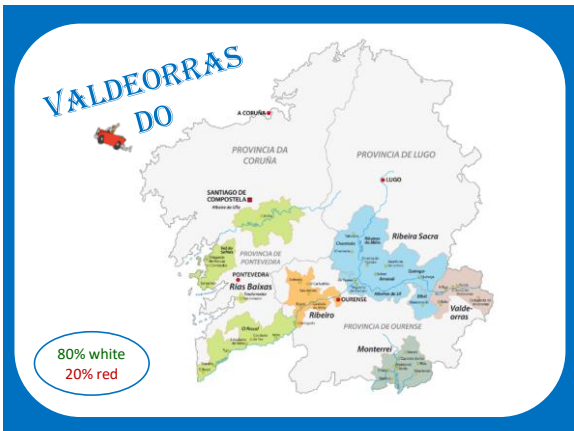
---

---

---

---

---



47

---

---

---

---

---

---

---

---

**Valdeorras DO**

Situated in the mountainous, eastern edge of Galicia, focused along the banks of the Sil River

Climature is predominantly continental; somewhat moderated by the Atlantic Ocean

Average elevation: 2,300 ft/700 m—980 ft/300 m

Leading grape: Godello

Also approved for red wines (tinto)—blends & varietals (castes)—sparkling wines (espumoso) and dried-grape wines (tostado)

48

---

---

---

---

---

---

---

---



**Vinos Tostados**

Two of Galicia's DOs—Valdeorras and Ribeiro—are approved for this style of dried-grape wine

Typically white, but red grapes are also allowed

Grapes are hand-harvested at a high degree of ripeness, and then left to air-dry for a min. of 90 days

The super-sweet must is allowed to undergo natural (typically partial) fermentation. Oak aging is often used.

The resulting wine—rich, flavorful, expensive, and sweet—is traditionally used in ceremonies and celebrations

49

---

---

---

---

---

---

---

---



50

---

---

---

---

---

---

---

---



51

---

---

---

---

---

---

---

---



Ponte Vella over the Cabe River 

52

---

---

---

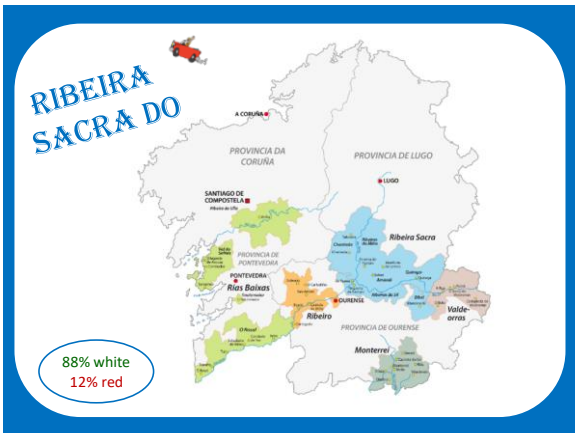
---

---

---

---

---



53

---

---

---

---

---

---

---

---



Ribeira  
Sacra  
DO

Located inland of Ribeiro; follows the Minho River (Río Miño) and the Sil River (Río Sil)

Specializes in the production of Mencía-based red wines; an estimated 70% of the grapes are Mencía

Other preferred red grapes include Brancellao (Alvarelhao) and Merenzao (Trousseau)

Leading white grapes include Godello, Treixadura, and Albarino

54

---

---

---

---

---

---

---

---

**Mencía**

Native to northwest Spain and best-known for its use in the Bierzo DO and the red wines of Galicia

Thick-skinned, moderately productive; moderate tannins, violet-blue grapes

Known as Jaen in Portugal's Dão Region

22,375 acres/9,055 ha in Spain; 6,370 acres/2,578 ha in Portugal

Typical aromas include red fruit (strawberry, raspberry, pomegranate, cherry), black fruit (blackberry), herbs (mint, thyme), spices (pepper, licorice), earthy aromas, minerality, floral

55

---

---

---

---

---

---

---

---



56

---

---

---

---

---

---

---

---



57

---

---

---

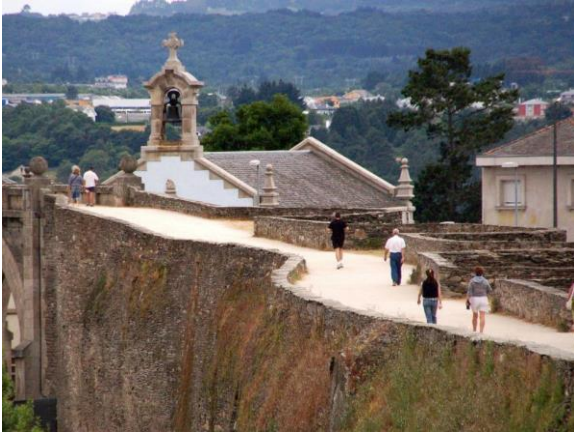
---

---

---

---

---



58

---

---

---

---

---

---

---

---



59

---

---

---

---

---

---

---

---



60

---

---

---

---

---

---

---

---

What Galician DO is located closest to the town of Vigo?



61

---

---

---

---

---

---

---

---

What DO is best-known for white wine blends based on the Treixadura grape?



62

---

---

---

---

---

---

---

---

What DO is most heavily planted to red grapes (at close to 88% of production dedicated to red wine)?



63

---

---

---

---

---

---

---

---

What is the main grape of  
Ribeira Sacra (also the main red  
grape of Monterrei Tinto)?



64

---

---

---

---

---

---

---

---

What is the orujo-based  
*Fire Drink* of Galicia?



65

---

---

---

---

---

---

---

---

What two Galician DOs are  
approved for the production of  
*Vinos Tostados*?



66

---

---

---

---

---

---

---

---

What river flows through the Valdeorras and Ribeira Sacra DOs?



67

---

---

---

---

---

---

---

---

Name one of the five sub-regions of the Rías Baixas DO:



68

---

---

---

---

---

---

---

---

Of all the places we “visited” today, where would you most like to go?



69

---

---

---

---

---

---

---

---



Thank  
you for  
joining  
us!

---

---

---

---

---

---

---