



1

---

---

---

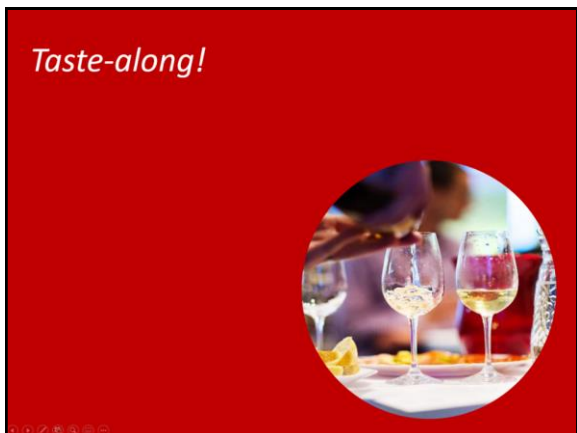
---

---

---

---

---



2

---

---

---

---

---

---

---

---

*Here are my tasting notes for*  
**Kistler Les Noisetiers Chardonnay, Sonoma Coast 2020**

- Native yeast, barrel ferment
- Complete mlf, barrel aging (11 months, no stirring)
- 344 barrels produced
- Aromas:
  - Fruit: Stone fruit (peach, apricot), citrus (lemon) pear, pineapple
  - Other: Hazelnut, floral (honeysuckle), mineral, butterscotch
- On the palate:
  - Viscous, medium-plus body
  - Lively finish, dry, lingering minerality

*Kistler*

*Sonoma Coast  
Les Noisetiers*

3

---

---

---

---

---

---

---

---

### American Viticultural Area

A wine region (appellation) recognized by the US

AVAs are defined and regulated by the TTB

A petition to establish an AVA is required to prove that the area has *defining characteristics* that distinguish it from the surrounding areas.

AVAs define geographic boundaries only...they do not regulate grape varieties, wine styles, etc.

4

---

---

---

---

---

---

---

---

There are currently \_\_\_\_ AVAs in the United States.

Of these,

\_\_\_\_ are in California,

\_\_\_\_ are in Washington State,

\_\_\_\_ are in Oregon, and

\_\_\_\_ is/are in Hawaii.

5

---

---

---

---

---

---

---

---



West Sonoma Coast AVA—California  
SLO Coast—California  
Lower Long Tom AVA—Oregon  
Ulupalakua AVA—Hawaii  
Rocky Reach AVA—Washington

6

---

---

---

---

---

---

---

---



7

---

---

---

---

---

---

---

---



8

---

---

---

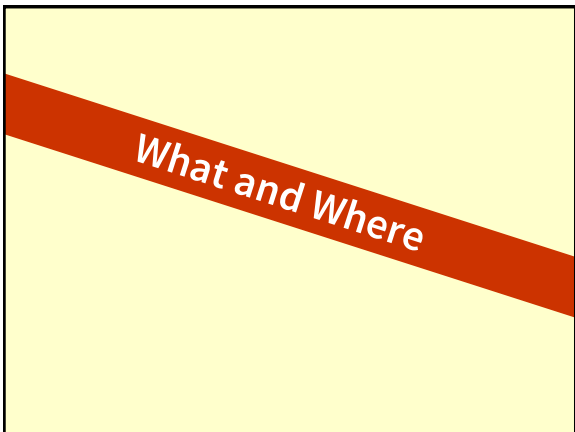
---

---

---

---

---



9

---

---

---

---

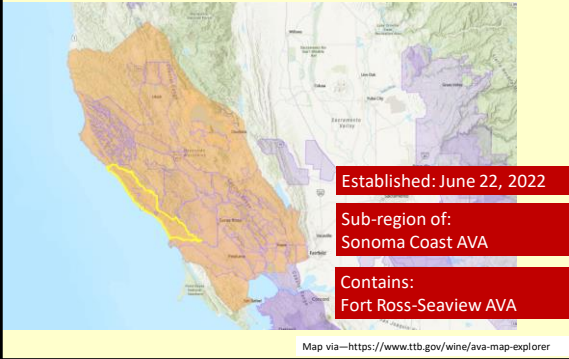
---

---

---

---

# West Sonoma Coast AVA



10

---

---

---

---

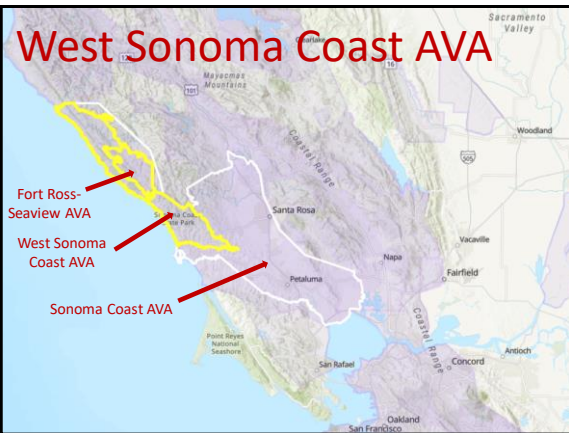
---

---

---

---

# West Sonoma Coast AVA



11

---

---

---

---

---

---

---

---

# West Sonoma Coast AVA



12

---

---

---

---

---

---

---

---

# Defining Characteristics

13

---

---

---

---

---

---

---

---



14

---

---

---

---

---

---

---

---



15

---

---

---

---

---

---

---

---

## Topography

Rugged—Sonoma Coast Highlands

To the north: Gualala River, Mendocino County

To the south: Bodega Bay, Estero Americano, Petaluma Gap AVA

To the west: 51 miles of coastline

16

---

---

---

---

---

---

---

---

## Soils

Franciscan Complex soils—  
greywacke, shale

Rocks are not easily eroded =  
rugged ridgelines, steep slopes

High sand content = excellent  
drainage, low fertility

17

---

---

---

---

---

---

---

---

## Climate

Overall—maritime climate influenced  
by coastal breezes, fog, & cool temps

Vineyards are planted about five miles  
inland—tucked into the mountains—in  
high elevations (above the fog line)  
and on (many south-facing) slopes

18

---

---

---

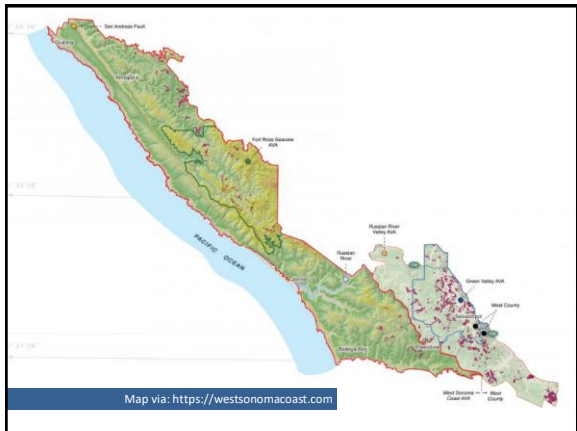
---

---

---

---

---



19

---

---

---

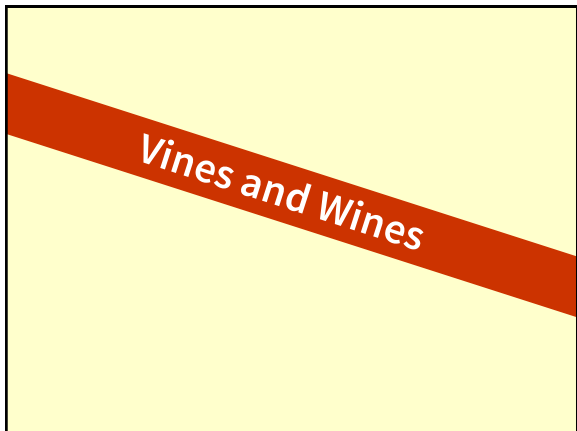
---

---

---

---

---



20

---

---

---

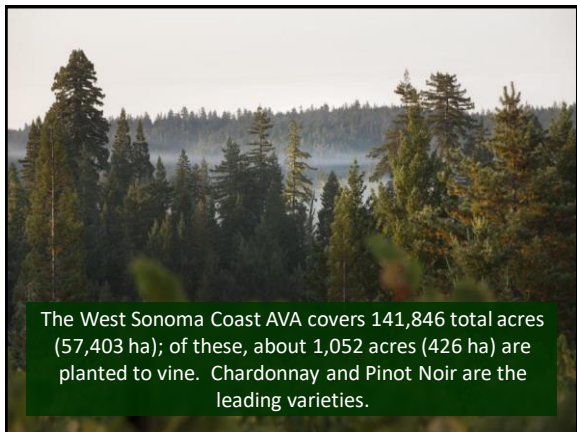
---

---

---

---

---



The West Sonoma Coast AVA covers 141,846 total acres (57,403 ha); of these, about 1,052 acres (426 ha) are planted to vine. Chardonnay and Pinot Noir are the leading varieties.

21

---

---

---

---

---

---

---

---

At last count, the area contains 47 commercial vineyards and 28 bonded wineries. Well-known names include Faila Wines, Hirsch Vineyards, Flowers Winery, & Peay Vineyards.



22

---

---

---

---

---

---

---

---



23

---

---

---

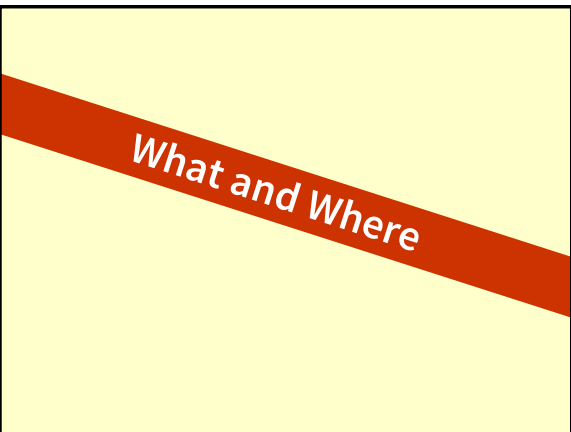
---

---

---

---

---



24

---

---

---

---

---

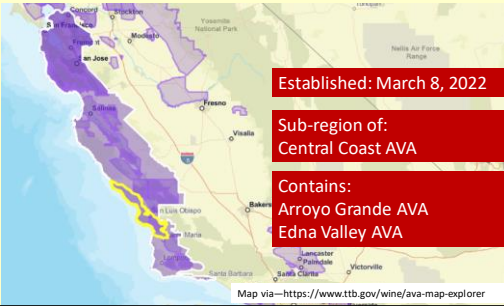
---

---

---



# San Luis Obispo Coast/ SLO Coast AVA



25

---

---

---

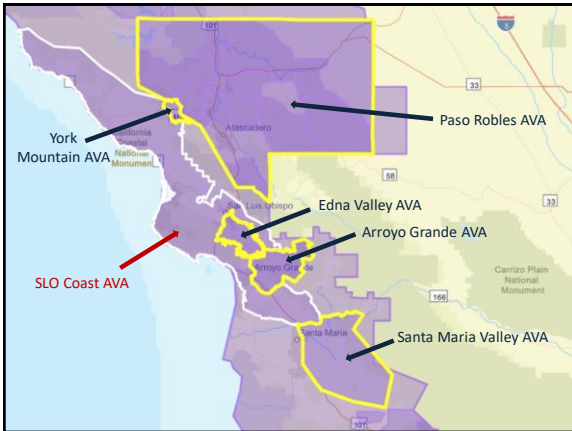
---

---

---

---

---



26

---

---

---

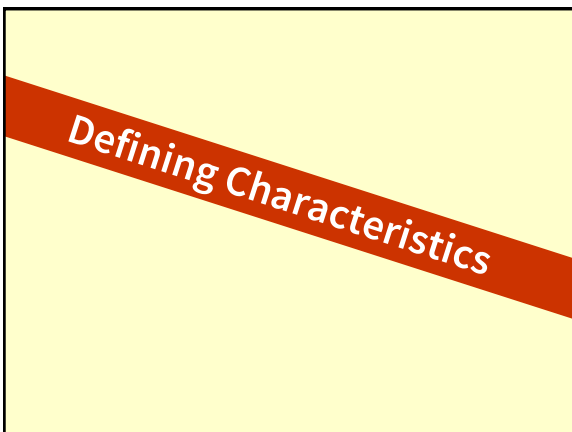
---

---

---

---

---



27

---

---

---

---

---

---

---

---



28

---

---

---

---

---

---

---

---

**Topography**

Low-lying coastal terraces, foothills, & small valleys along the Pacific Coast

To the west: 65 miles/105 km of Pacific Coastline

To the east: The Santa Lucia Range, Coast Mountains

To the south: Santa Maria River, Santa Maria Valley

29

---

---

---

---

---

---

---

---

**Soils**

On the coast: wind deposits and sand dunes (not suitable for viti)

Inland/to the east: volcanic soils

To the north: weathered sedimentary soils including sandstone and shale

To the south: marine deposits, sand, loam

30

---

---

---


---

---

---

---

---

**Climate** 

Overall: cool, maritime

Region I (Winkler); average temperature during the growing season: 47° to 52° (low); 70° to 78° (high)

Fog cover typical (night and early mornings)

31

---

---

---

---

---

---

---

---

*Vines and Wines*

32

---

---

---

---

---

---

---

---



The SLO Coast AVA currently contains over 78 commercial vineyards planted to just over 5,000 acres/2,025 hectares of vines. Chardonnay (43%) and Pinot Noir (35%) are the leading varieties.

33

---

---

---

---

---

---

---

---

There are over 50 wineries located in the SLO Coast AVA, including Niner Wine Estates, Filippini Ranch, Laetitia Vineyard & Winery, and Kynsi Winery.



34

---

---

---

---

---

---

---

---

*Taste-along!*



35

---

---

---

---

---

---

---

---

*Here are my tasting notes for  
Elk Cove Vineyards Estate Pinot Noir, Willamette Valley 2020*

- Open-top, (small) stainless steel fermentors
- Aging: ten months French oak
- Aromas:
  - Fruit: cherry, raspberry, black currant
  - Other: earthy (dry leaves, forest floor), spice (clove, nutmeg, black pepper), smoky (rhubarb)
- On the palate:
  - Dusty, gritty tannins, smooth acidity
  - Medium-bodied, slight bitterness on the finish



36

---

---

---

---

---

---

---

---



Lower Long Tom AVA—Oregon

37

---

---

---

---

---

---

---

---



38

---

---

---

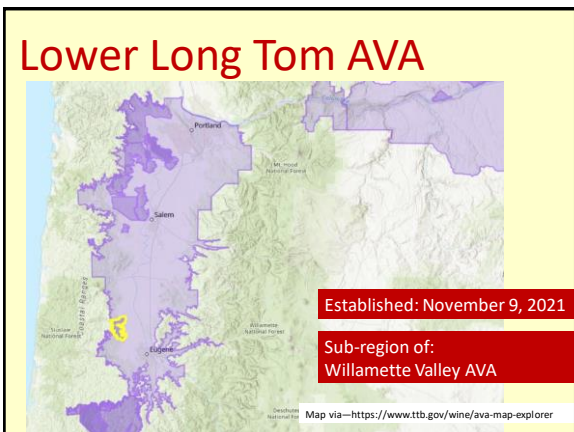
---

---

---

---

---



39

---

---

---

---

---

---

---

---

# Defining Characteristics

---

---

---

---

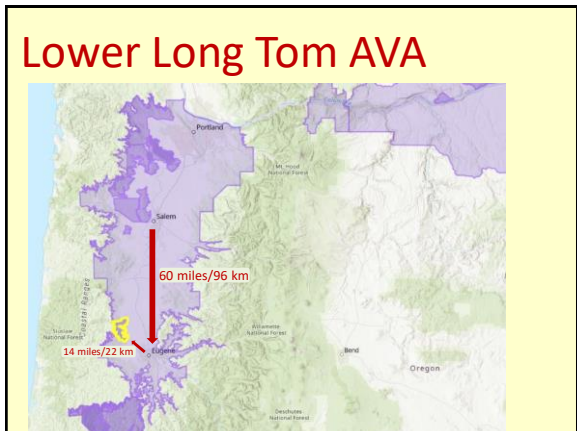
---

---

---

---

40



---

---

---

---

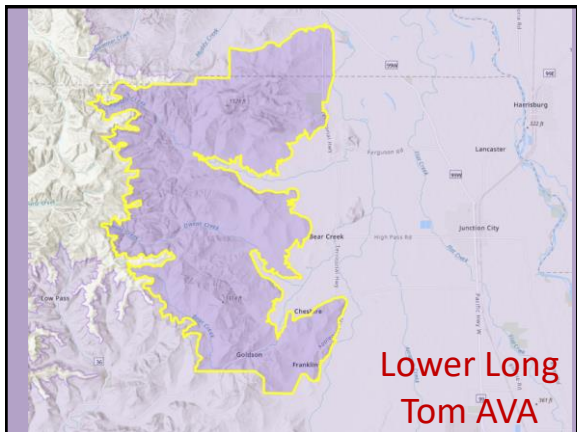
---

---

---

---

41



---

---

---

---

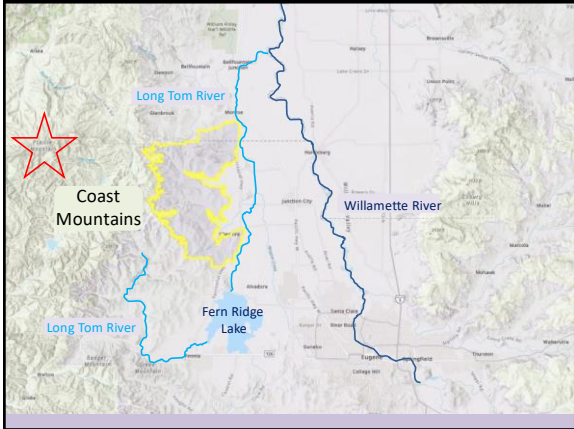
---

---

---

---

42



43

---

---

---

---

---

---

---

---

**Topography**

Elevations range from 1,000 feet/305 m (in the west) to 550 feet/168 m (center and east)

To the west: the Coast Mountains

To the east: the Long Tom River & the Willamette valley floor

44

---

---

---

---

---

---

---

---

**Soils**

Main soils: Bellpine (decomposed sandstone) and Jory (volcanic) atop sandstone/siltstone

Moderate depth/moderate water retention

45

---

---

---

---

---

---

---


---



**Climate**

Slightly warmer than surrounding areas; Coast Range rain shadow blocks cooling influences

Prairie Mountain—3,422 feet/1,430 m, located directly west—re-directs cooling breezes to the north and south



---

---

---

---

---

---

---

---

46

*Vines and Wines*



---

---

---

---

---

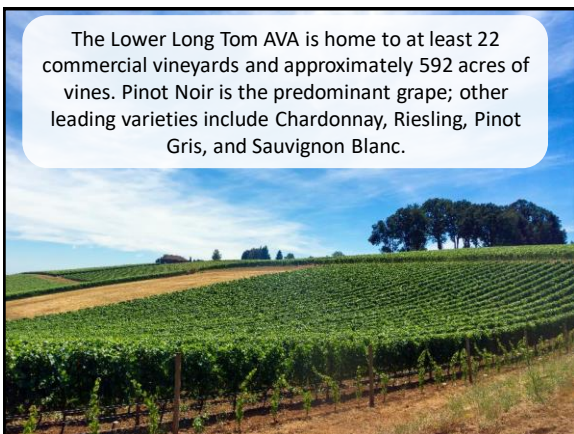
---

---

---

47

The Lower Long Tom AVA is home to at least 22 commercial vineyards and approximately 592 acres of vines. Pinot Noir is the predominant grape; other leading varieties include Chardonnay, Riesling, Pinot Gris, and Sauvignon Blanc.



---

---

---

---

---

---

---

---

48



The Lower Long Tom AVA is home to 10 wineries, including Benton-Lane Winery, High Pass Winery, Antiquum Farm, and Bennett Wine Company.



Photo via: benton-lane.com

49

---

---

---

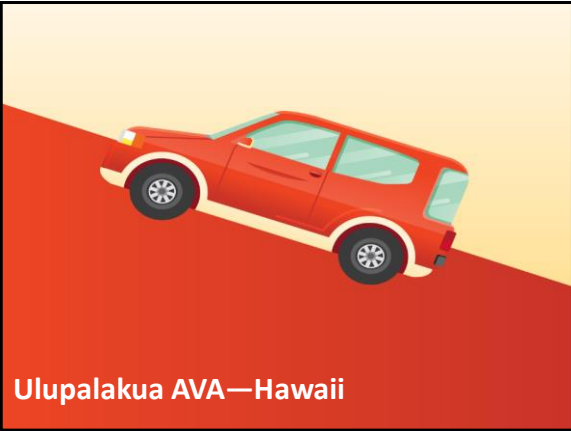
---

---

---

---

---



Ulupalakua AVA—Hawaii

50

---

---

---

---

---

---

---

---



What and Where

51

---

---

---

---

---

---

---

---

# Ulupalakua AVA



Established: June 30, 2021

The first (and only) AVA in Hawaii

Map via—<https://www.ttb.gov/wine/ava-map-explorer>

52

---

---

---

---

---

---

---

---

## Defining Characteristics

53

---

---

---

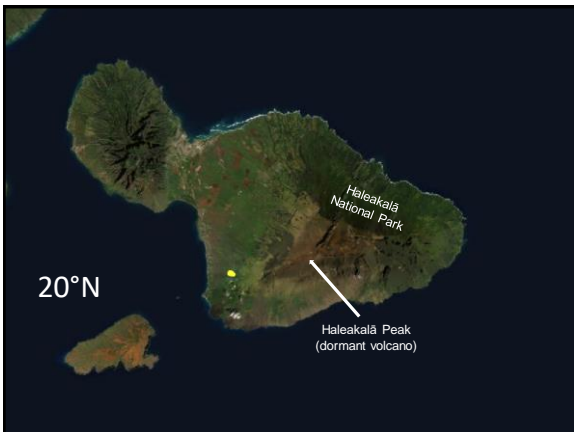
---

---

---

---

---



54

---

---

---

---

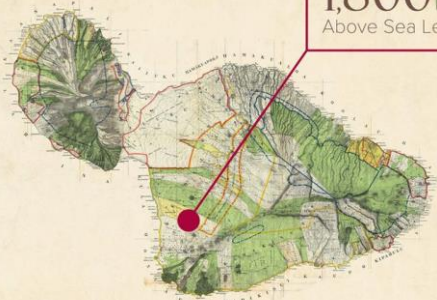
---

---

---

---

# Ulupalakua AVA



Map via: <https://mauiwine.com>

55

---

---

---

---

---

---

---

---

## Topography

Located atop gently sloping, southwest-facing benchlands

Elevation: 1,560 feet/475 m to 1,850 feet/564 m

To the south and east: Haleakalā Peak, steep slopes, & exposed volcanic rock

To the west: The Pacific Ocean

56

---

---

---

---

---

---

---

---

## Soils

80%: volcanic ash & the weathered remains of igneous volcanic rock

20%: silt, loam, and clay

57

---

---

---

---


---

---

---

---

**Climate**



Tropical and mild: year-round temperatures stay between 50°F/10°C and 85°F/29°C

Average rainfall: 30 inches per year

Rain rarely falls in July or August, but otherwise humidity can be an issue

58

---

---

---

---

---

---

---

---



*Vines and Wines*

59

---

---

---

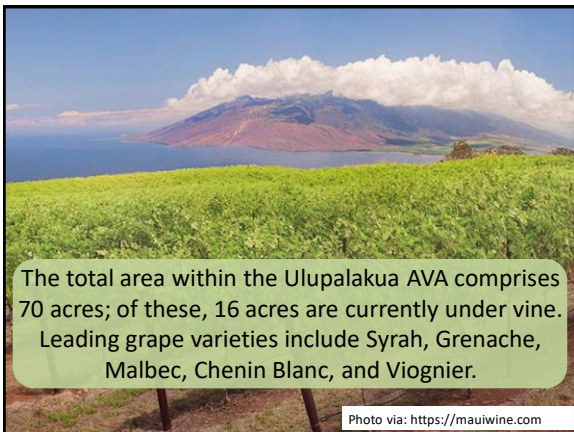
---

---

---

---

---



The total area within the Ulupalakua AVA comprises 70 acres; of these, 16 acres are currently under vine. Leading grape varieties include Syrah, Grenache, Malbec, Chenin Blanc, and Viognier.

Photo via: <https://mauiwine.com>

60

---

---

---

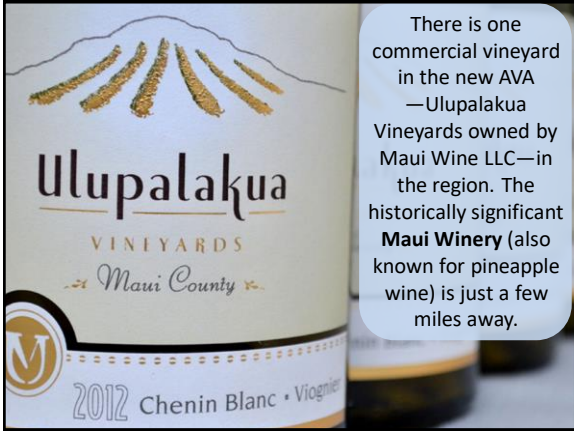
---

---

---

---

---



There is one commercial vineyard in the new AVA —Ulupalakua Vineyards owned by Maui Wine LLC—in the region. The historically significant **Maui Winery** (also known for pineapple wine) is just a few miles away.

---

---

---

---

---

---

---

---

61



Rocky Reach AVA—Washington State

---

---

---

---

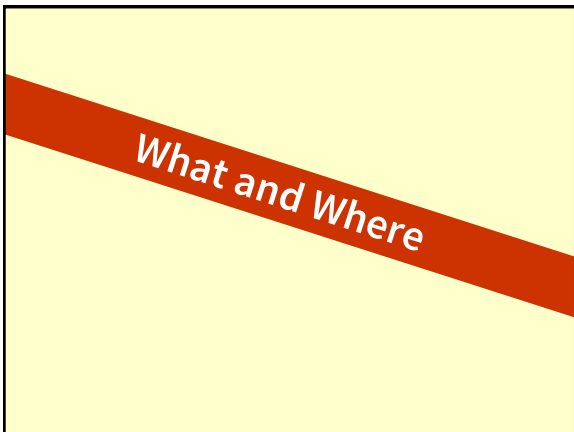
---

---

---

---

62



---

---

---

---

---

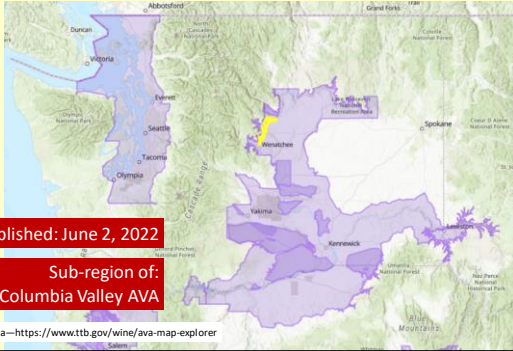
---

---

---

63

# Rocky Reach AVA



Established: June 2, 2022

Sub-region of:  
Columbia Valley AVA

Map via—<https://www.ttb.gov/wine/ava-map-explorer>

---

---

---

---

---

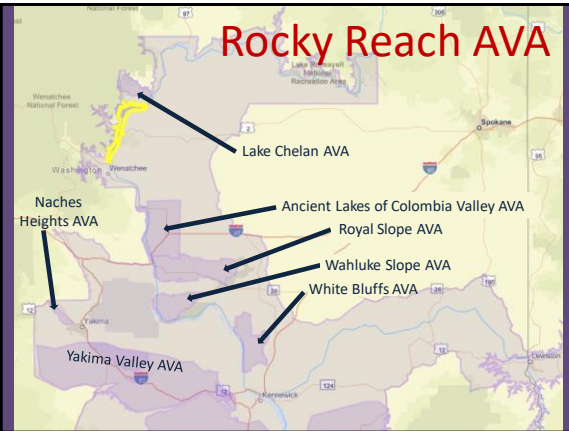
---

---

---

64

# Rocky Reach AVA



---

---

---

---

---

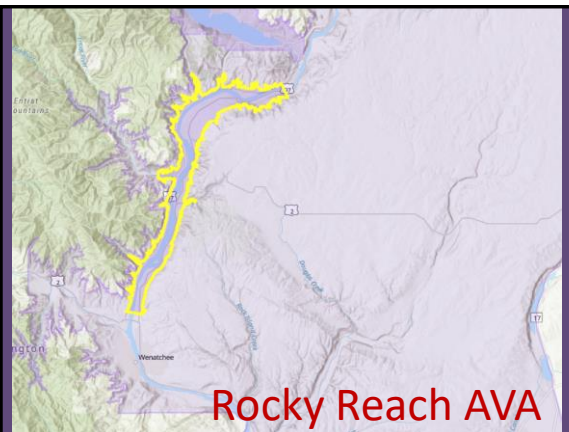
---

---

---

65

# Rocky Reach AVA



---

---

---

---

---

---

---

---

66

# Defining Characteristics

67

---

---

---

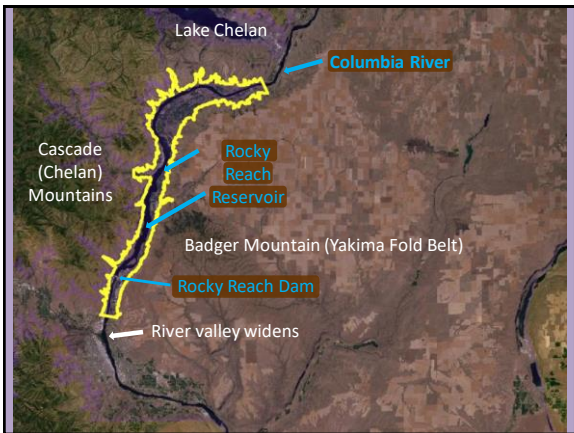
---

---

---

---

---



68

---

---

---

---

---

---

---

---

## Topography

2.5 miles (on either side) of the Columbia River

Low elevation, level terraces between the Cascades (to the west) and Badger Mountain (to the east)

To the south: river valley widens

To the north: glacier-influenced

69

---

---

---

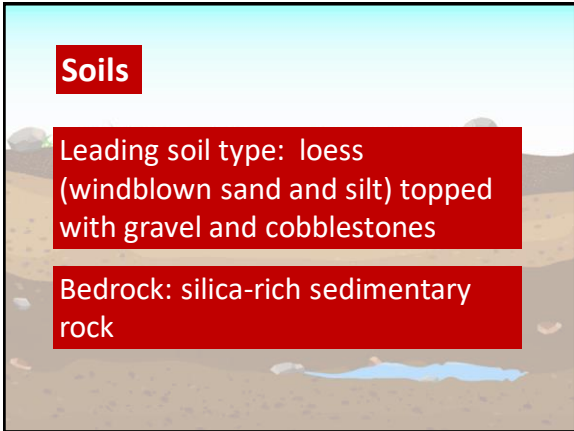
---

---

---

---

---

A slide titled "Soils" with a background illustration of a landscape. The text is contained in red boxes.

**Soils**

Leading soil type: loess (windblown sand and silt) topped with gravel and cobblestones

Bedrock: silica-rich sedimentary rock

70

---

---

---

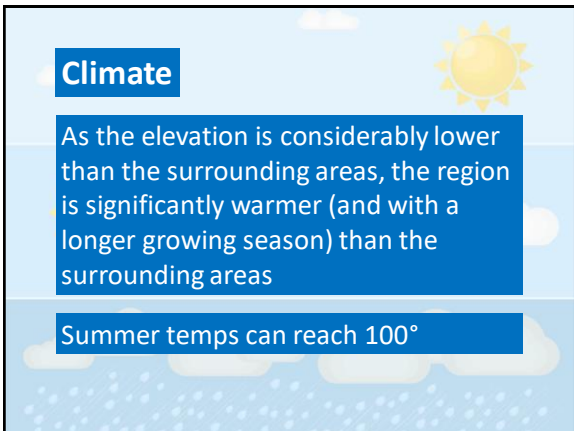
---

---

---

---

---

A slide titled "Climate" with a background illustration of a sunny day. The text is contained in blue boxes.

**Climate**

As the elevation is considerably lower than the surrounding areas, the region is significantly warmer (and with a longer growing season) than the surrounding areas

Summer temps can reach 100°

71

---

---

---

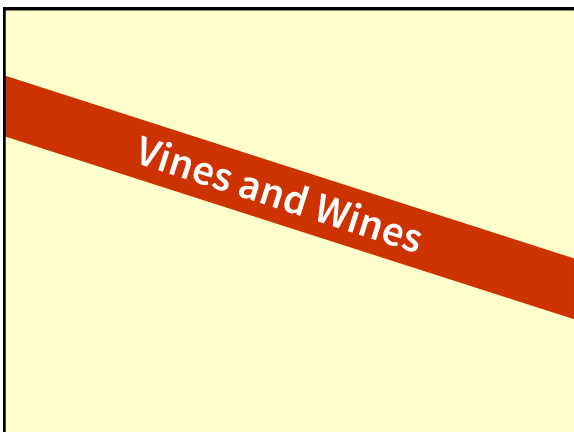
---

---

---

---

---

A slide with a yellow background and a red diagonal banner.

**Vines and Wines**

72

---

---

---

---

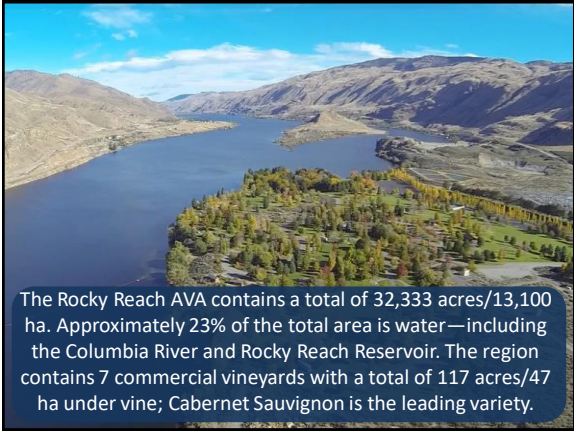
---

---

---

---





The Rocky Reach AVA contains a total of 32,333 acres/13,100 ha. Approximately 23% of the total area is water—including the Columbia River and Rocky Reach Reservoir. The region contains 7 commercial vineyards with a total of 117 acres/47 ha under vine; Cabernet Sauvignon is the leading variety.

73

---

---

---

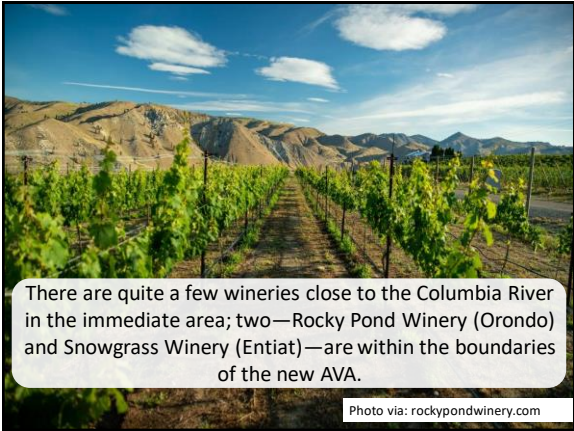
---

---

---

---

---



There are quite a few wineries close to the Columbia River in the immediate area; two—Rocky Pond Winery (Orondo) and Snowgrass Winery (Entiat)—are within the boundaries of the new AVA.

Photo via: rockypondwinery.com

74

---

---

---

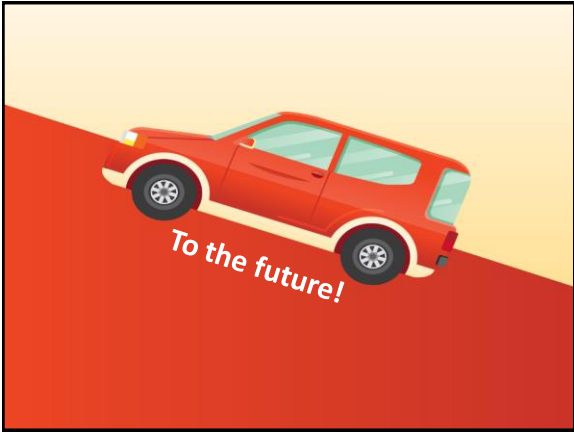
---

---

---

---

---



75

---

---

---

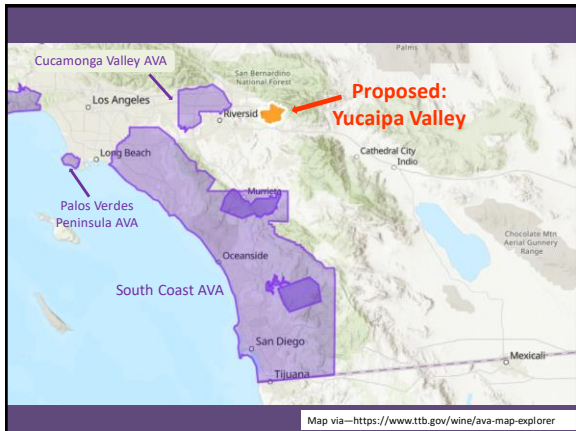
---

---

---

---

---



76

---

---

---

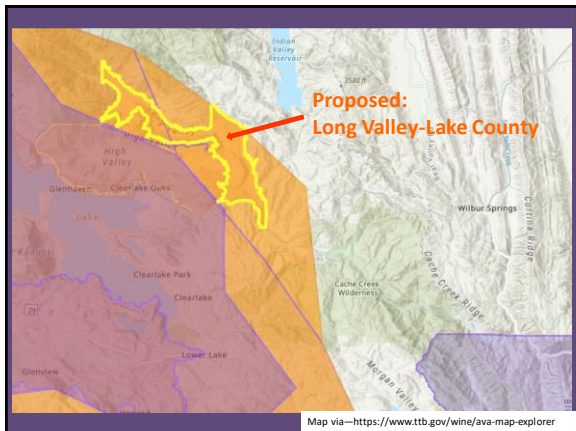
---

---

---

---

---



77

---

---

---

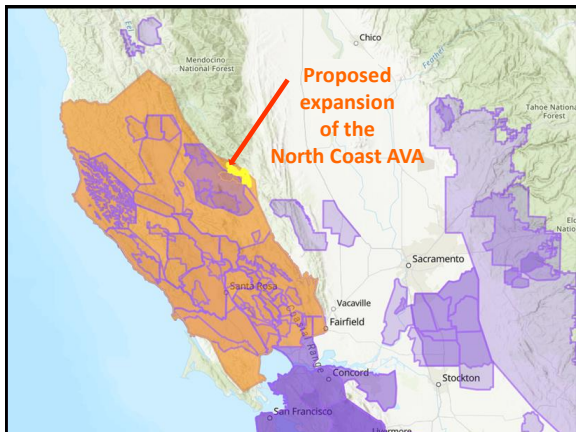
---

---

---

---

---



78

---

---

---

---

---

---

---

---

Let's Review!



---

---

---

---

---

---

---

---

79

The \_\_\_\_\_ River flows through Fern Ridge Lake before merging with the Willamette River.



---

---

---

---

---

---

---

---

80

\_\_\_\_\_ Mountain (3,422 feet/ 1,430 m) is located directly west of the Lower Long Tom AVA and keeps the region slightly \_\_\_\_\_ than the surrounding areas.



---

---

---

---

---

---

---

---

81

What new AVA contains the Fort Ross-Seaview AVA?



---

---

---

---

---

---

---

---

82

The *Estero Americano* (located within the Petaluma Gap AVA) forms a portion of the border between which two counties?



---

---

---

---

---

---

---

---

83

The Rocky Reach AVA is located along the Columbia River, just to the south of the \_\_\_\_\_ AVA.



---

---

---

---

---

---

---

---

84

What two AVAs are contained within the SLO Coast AVA?



---

---

---

---

---

---

---

---

85

What tiny AVA is located between the SLO Coast and Paso Robles AVAs?



---

---

---

---

---

---

---

---

86

On what island is the Ulupalakua AVA located?



---

---

---

---

---

---

---

---

87

Up to 80% of the soils of the  
Ulupalakua AVA are composed of:



---

---

---

---

---

---

---

---

88

Study Tool → AVA Explorer Map

<https://www.ttb.gov/wine/ava-map-explorer>



---

---

---

---

---

---

---

---

89

References/for more information:

- West Sonoma Coast:
  - <https://westsonomacoast.com/>
  - <http://winewitandwisdomswe.com/2022/05/23/welcome-to-the-world-west-sonoma-coast-ava/>
- SLO Coast:
  - <https://slocoastwine.com/>
  - <http://winewitandwisdomswe.com/2022/03/09/welcome-to-the-world-slo-coast-ava/>
- Ulupalakua:
  - <https://mauiwine.com/our-wines/>
  - <http://winewitandwisdomswe.com/2021/07/05/welcome-to-the-world-ulupalakua-ava/>
- Rocky Reach:
  - <https://www.washingtonwine.org/resource/rocky-reach-ava/http://winewitandwisdomswe.com/2022/06/04/welcome-to-the-world-rocky-reach-ava/>
- Lower Long Tom:
  - <https://www.oregonwine.org/regions/willamette-valley/lower-long-tom-ava/http://winewitandwisdomswe.com/2021/11/11/one-more-for-oregon-introducing-the-lower-long-tom-ava/>



---

---

---

---

---

---

---

---

90



91

---

---

---

---

---

---

---