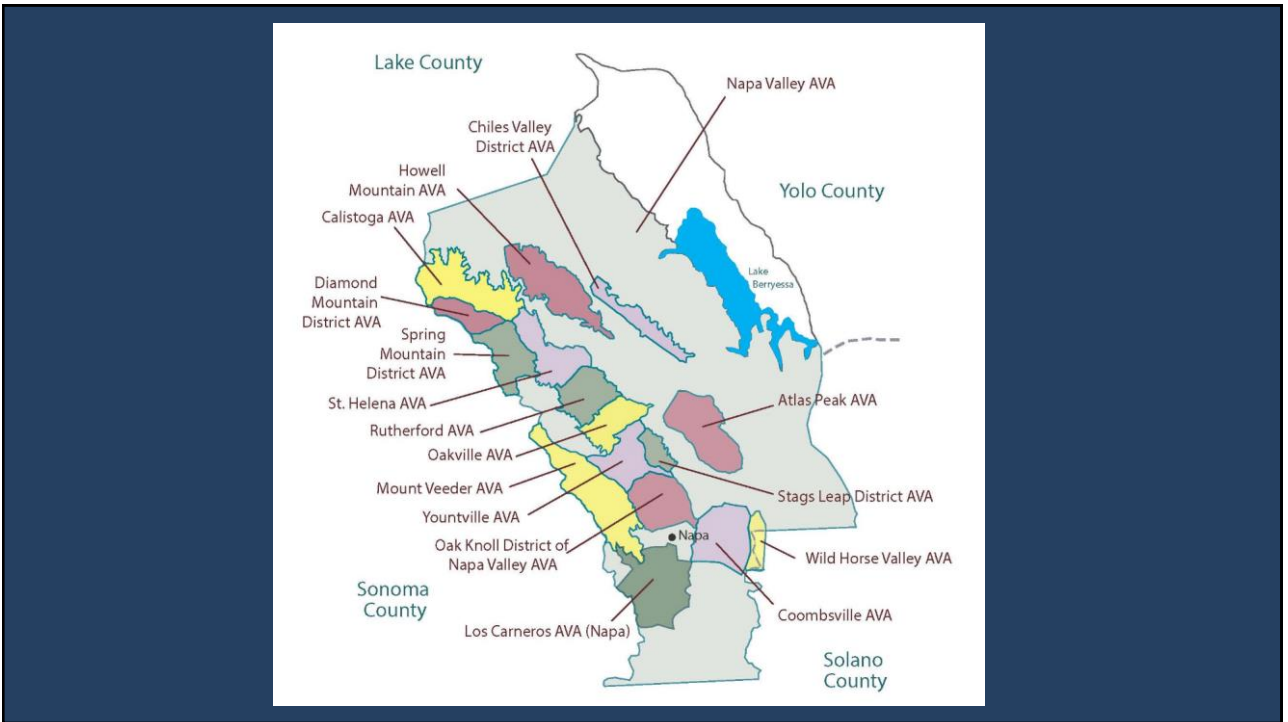




*So...you
think you
know
Napa?*

1



2

Taste along:

Napa Valley Chardonnay



3

Here are my tasting notes for
Chateau Montelena Napa Valley Chardonnay 2020

- 100% Chardonnay
- 13.8% abv
- Viticulture: Warm, dry spring (just two bouts of rain); hot, sunny summer leading to earlier-than-usual harvest; *exceptional ripeness*
- Aging: 10 months in French oak
- Aromas:
 - Fruit: Green apple, citrus (lime, lemon zest), green pear, apricot
 - Other: Floral (orange blossom, honeysuckle), vanilla, (fresh) oak, brioche
- On the palate:
 - Tropical fruit (pineapple) flavors, medium-plus body, some viscosity, crisp acidity
 - Finish: warm, lingering, with a hint of lemon peel bitterness



4



Sample Question:

What is the most widely planted grape variety in the Napa Valley?

- a. Merlot
- b. Zinfandel
- c. Pinot Noir
- d. Cabernet Sauvignon

5

Cabernet in Napa History

Introduced in the late 1800s

Early icons: Beringer, Inglenook, Charles Krug

1940: BV George de Latour Private Reserve

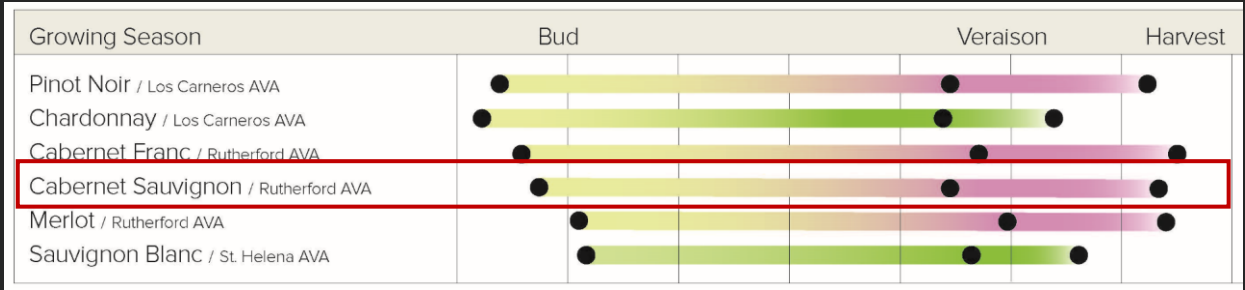
1970s: Franco-American Projects

1976: Paris Tasting

1990s: Here come the cult Cabernets!

6

Viticultural Character—Napa Cabernet Sauvignon



- Vigorous
- Late (mid-to late) budding
- Mid-to-late harvest
- Bunches and berries are small
- Skins are thick with a blu-ish hue

Chart via: napavintners.com

7

Primary Flavor Notes—Napa Cabernet Sauvignon



Black Cherry



Black Plum



Tobacco



Graphite



Baking Spices

Wine Style

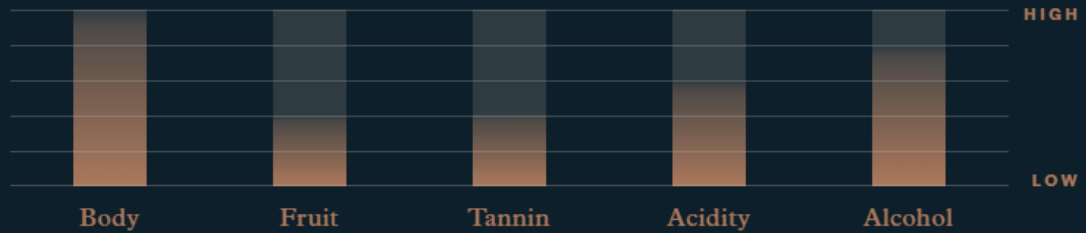


Chart via: napavintners.com

8



1. What is the most widely planted white grape variety in Napa Valley?

- a. Chardonnay
- b. Sauvignon Blanc
- c. Riesling
- d. Pinot Gris

9

Chardonnay in Napa History

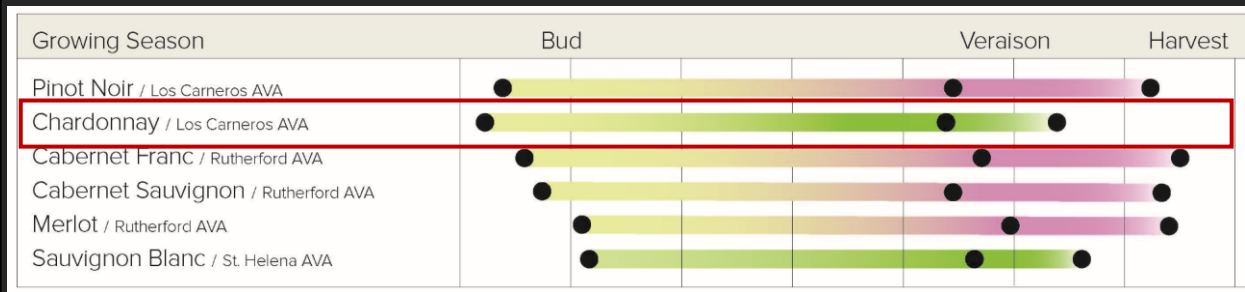
The first (recorded) Napa Chardonnay vineyard was planted in 1947

Despite its popularity in Europe and elsewhere, no one paid much attention to California Chardonnay until the Paris Tasting of 1976

Today, Chardonnay is the second-most planted variety in Napa (and the most heavily planted white grape)

10

Viticultural Character—Napa Chardonnay



- Vigorous and productive
- Early budding/prey to Spring Frost/early ripening
- Relatively thin-skinned, susceptible to some rot/diseases
- Loves the limestone/calcium rich soils of Carneros
- Medium-size bunches, green berries

Chart via: napavintners.com

11

Primary Flavor Notes—Napa Chardonnay



Yellow Apple



Pineapple



Vanilla



Citrus Blossom



Honeycomb

Wine Style

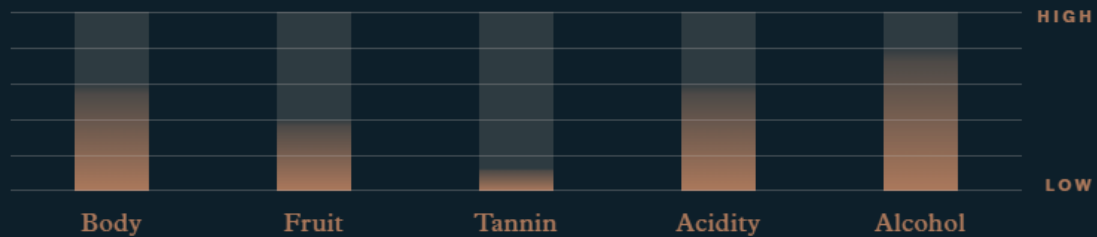
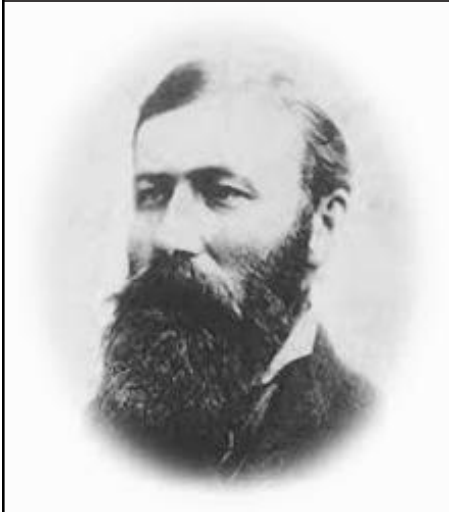


Chart via: napavintners.com

12



2. Captain Gustave Niebaum created the _____ Winery (now owned by Francis Ford Coppola) in 1879.

- a. Beringer
- b. Schramsberg
- c. Charles Krug
- d. Inglenook

13



1868

Captain Gustave Niebaum
arrives in San Francisco



1879

Captain Niebaum purchases
the Inglenook Property



1887

Inglenook's Chateau Winery
is completed

14



1908

Captain Niebaum passes away; winemaking stops for a few years until a new team is hired



1915

Inglenook wines win multiple Gold Medals at the Panama-Pacific International Exposition in S.F.



1939

Daniel Jr (the captain's nephew and heir) takes over, producing very high-quality wines

Photos via: www.inglenook.com/story

15



1964

The brand (and much of the estate) is sold to United Vintners



1975

Francis Ford Coppola buys a portion of the estate and opens Niebaum-Coppola Winery

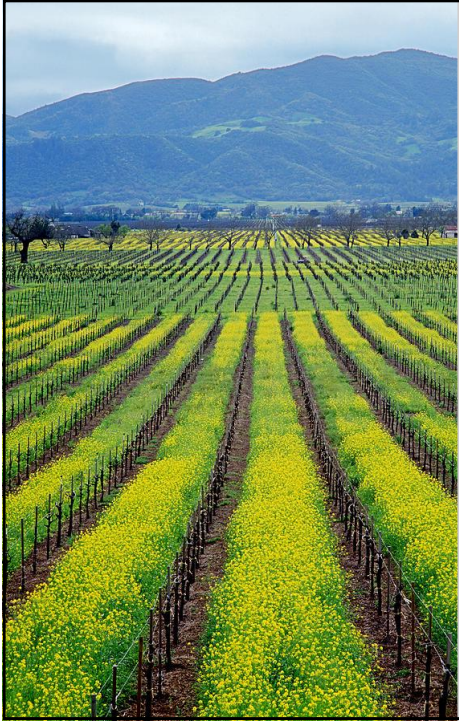


2011

Coppola completes the purchase of the original estate AND the Inglenook Brand

Photos via: www.inglenook.com/story

16

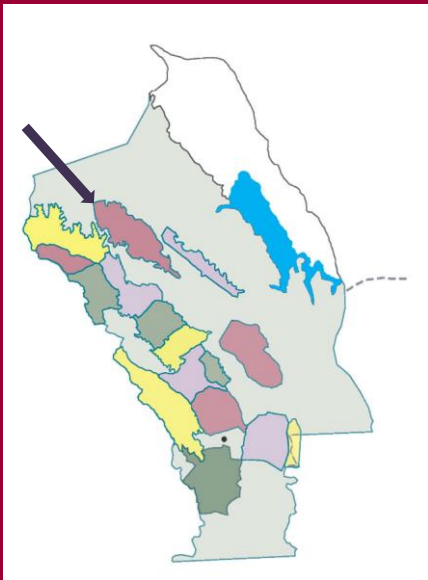


3. Which AVA has a *minimum* elevation of 1,400 feet?

- a. Mount Veeder
- b. Atlas Peak
- c. Howell Mountain
- d. Calistoga

17

Howell Mountain AVA



18

Established in 1983

Napa's only elevation-specific AVA

Boundaries follow the 1,400 foot/425 m contour

Above the fog line, receives some ocean breezes

Soils: Predominantly volcanic, shallow and infertile



19

4. What year was Napa Valley recognized as an AVA?

- a. 1980
- b. 1981**
- c. 1986
- d. 1970

20

The first AVA to be established—the AUGUSTA AVA (located in Missouri)—was approved on June 19, 1980...

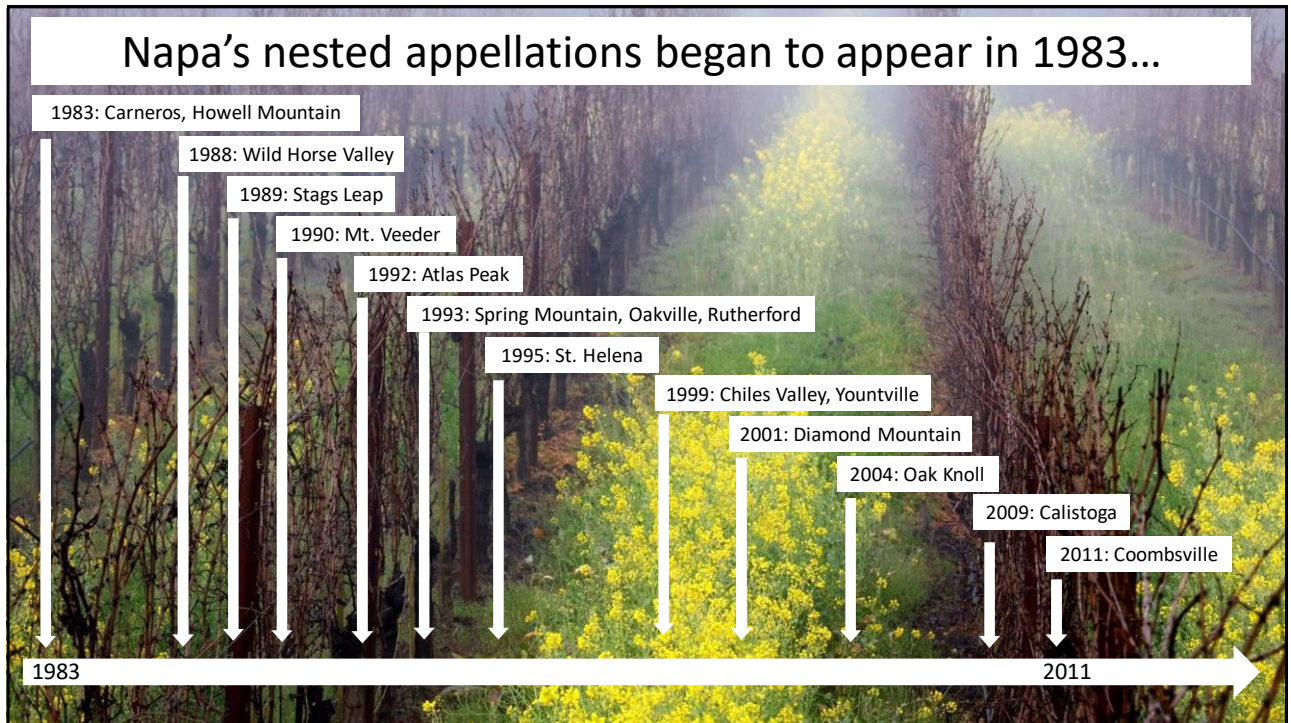


21



The Napa Valley AVA—the second to be established—was approved on January 27, 1981...

22



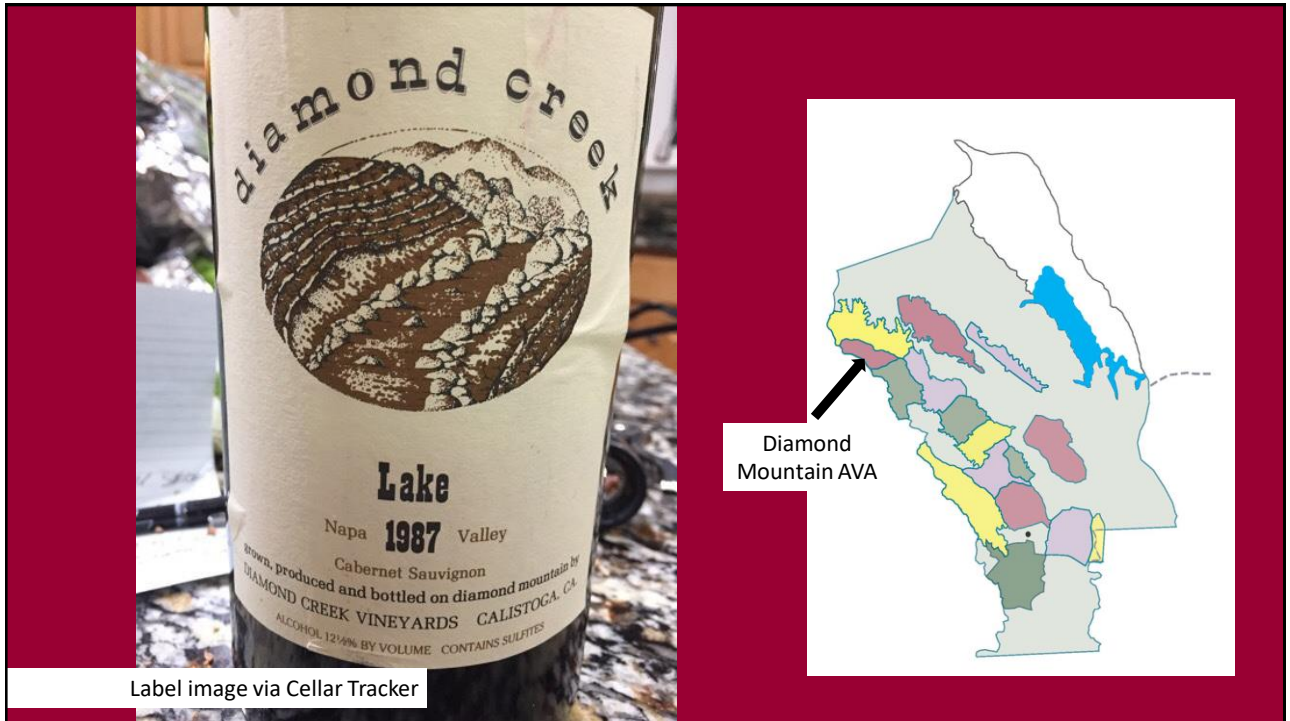
23



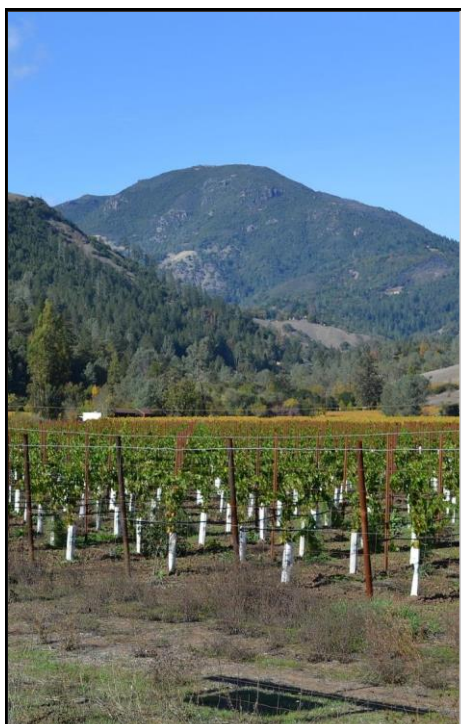
5. What was the first Napa Valley wine to cost \$100?

- Screaming Eagle 2014
- Opus One 1978
- Marcassin Blue Slide Ridge Pinot Noir 1985
- Diamond Creek Lake Vineyard Cab Sauv 1987**

24



25



6. What is the highest peak in Napa County?

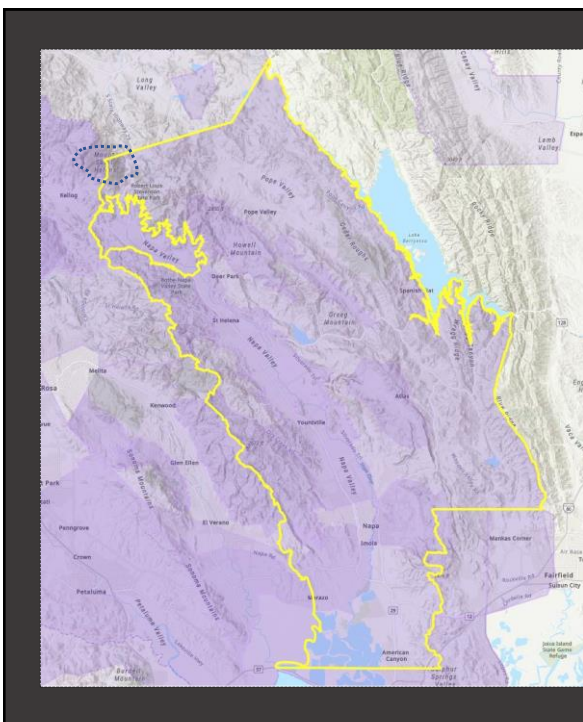
- a. Mount Saint Helena
- b. Mount Veeder
- c. Berryessa Peak
- d. Cobb Mountain

26

The east summit of Mount Saint Helena, at 4,200 feet (1,280 m)—the second highest of the mountain's five peaks—is the highest point in Napa County



27



About Mount Saint Helena

Part of the Mayacamas Mountain Range

Source of the Napa River

Situated just north of the city of Calistoga (and the Calistoga AVA)

Located within Robert Louis Stevenson State Park (you can hike to the summit!)

28



7. Who planted the *To Kalon* Vineyard?

- a. Charles Krug
- b. H.W. Crabb
- c. Tim Mondavi
- d. Jacob Schram

29

H.W. Crabb—a native of Ohio born in 1828—arrived in California in 1852...most likely looking for gold.

By 1868, he had turned his attention to agriculture and purchased 240 acres of farmland from E.L. Sullivan—George Yount's son-in-law.



30

The land that he called *To-Kalon* would become one of the most famous vineyards in Napa



31

Taste along: Napa Valley Cabernet Sauvignon



32

Here are my tasting notes for
Honig Vineyard & Winery Napa Valley Cabernet Sauvignon 2019

- 84% Cabernet Sauvignon
 - 6% Petit Verdot, 4% Merlot, 4% Malbec, 1% Cabernet Franc, 1% Petite Syrah
- Viticulture: Rainy spring, warm summer, great harvest weather
- Production: Vineyard lots fermented separately; 10 to 30 days on the solids/lees
- Aging: 18 months in oak (25% new/American, 15% new/French)
- Aromas:
 - Fruit: Plum, raspberry, black currant/cassis, black cherry
 - Other: Cinnamon, nutmeg, cedar, chocolate, anise, vanilla, tobacco
- On the palate:
 - Full-bodied, rich/ripe tannins, flavors of fruit-baking spices-cocoa, lingering/warm finish



33

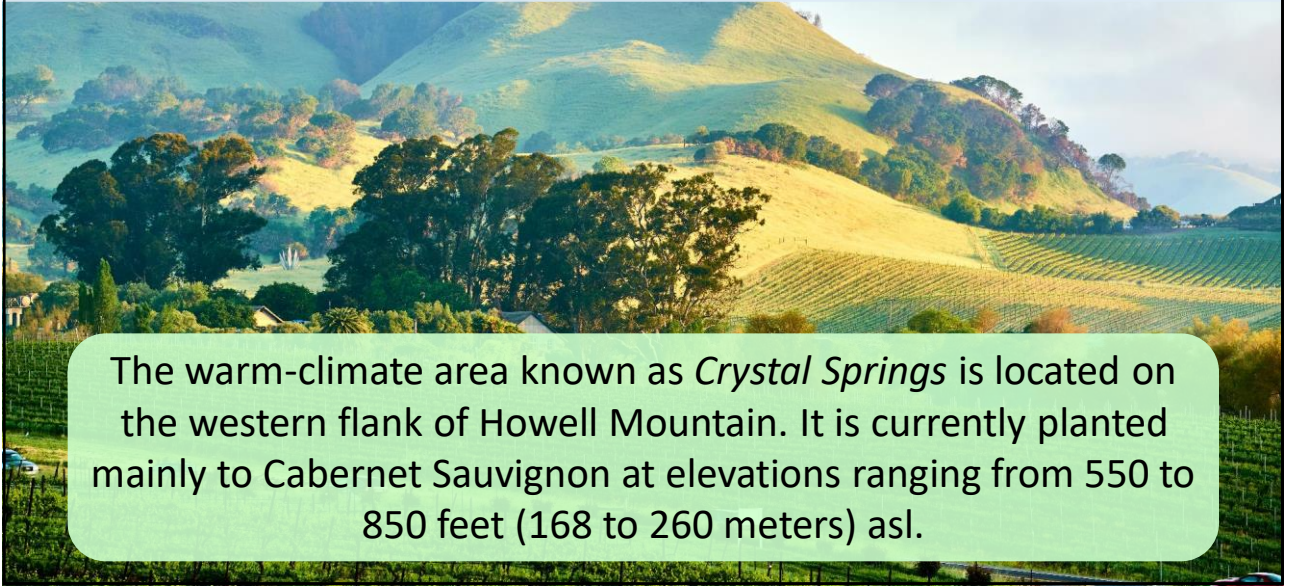


8. Which of the following areas has an accepted application on file for a new AVA?

- a. Pope Valley
- b. Steel Canyon
- c. Crystal Springs**
- d. Berryessa Highlands

34

An application for the Crystal Springs of Napa Valley AVA was accepted on September 2, 2020.

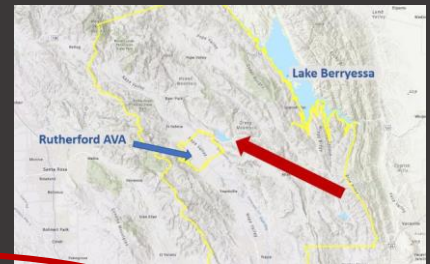


The warm-climate area known as *Crystal Springs* is located on the western flank of Howell Mountain. It is currently planted mainly to Cabernet Sauvignon at elevations ranging from 550 to 850 feet (168 to 260 meters) asl.

35

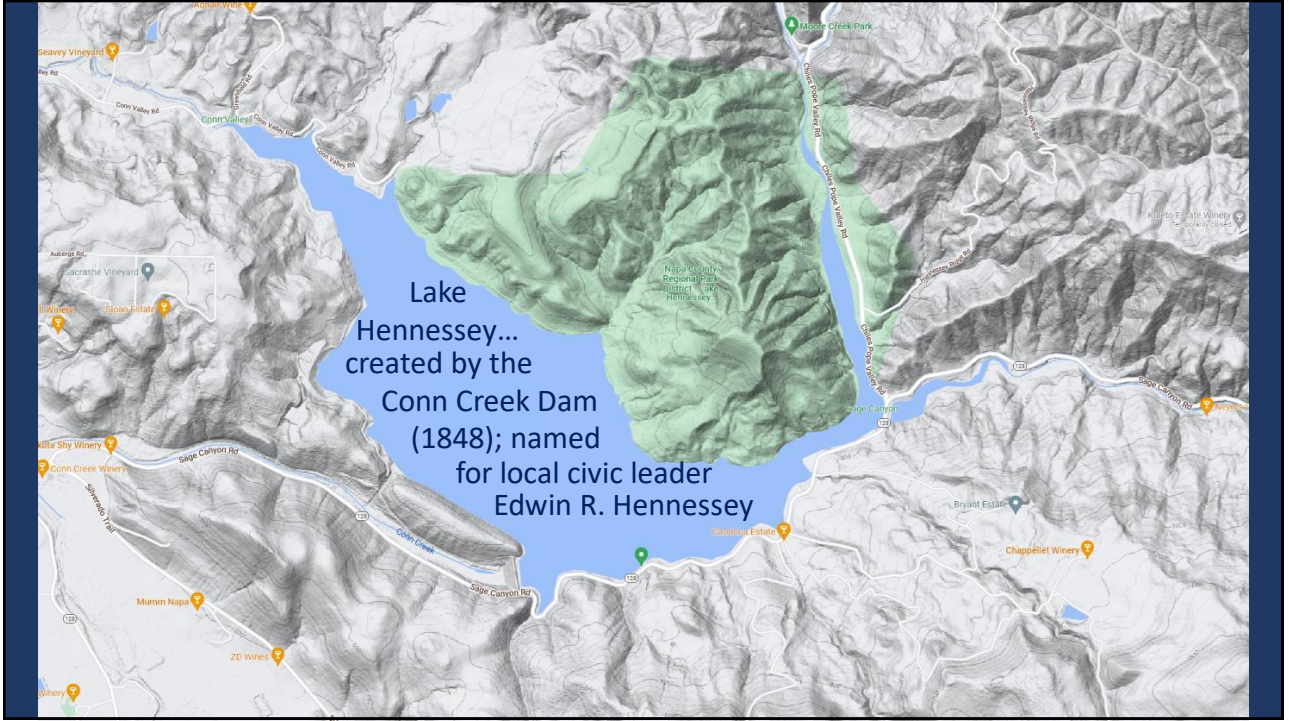


9. What lake is this?

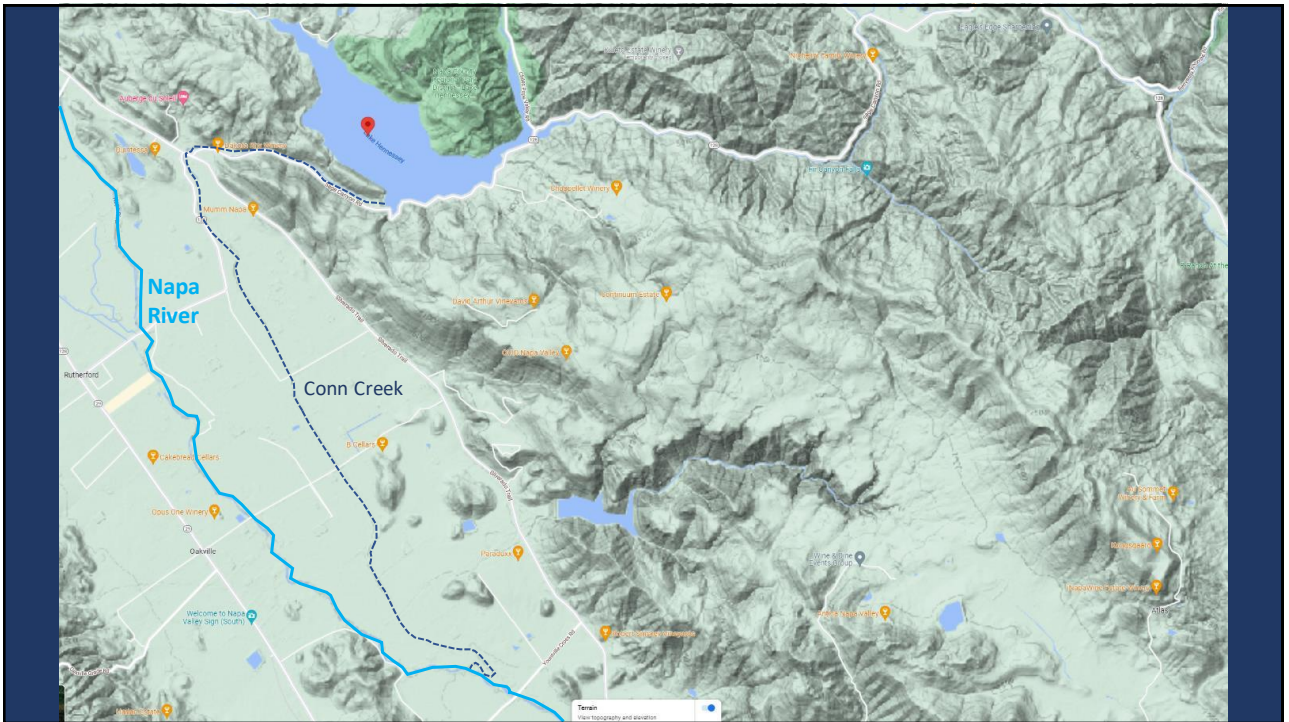


- a. Lake Hennessey
- b. Annabel Lake
- c. Lake Cascade
- d. Lake Anza

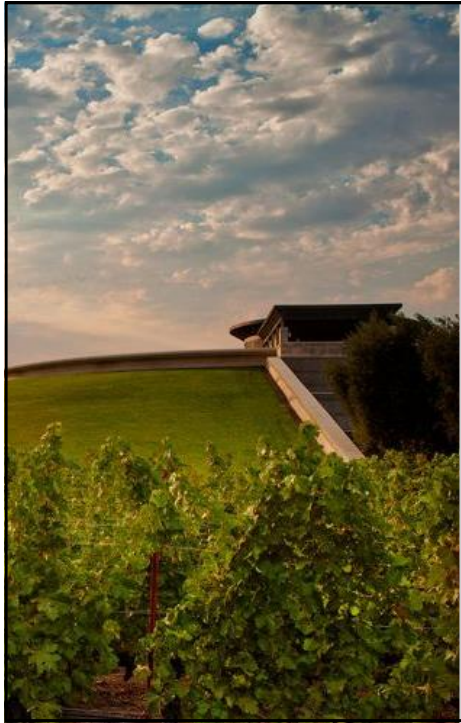
36



37



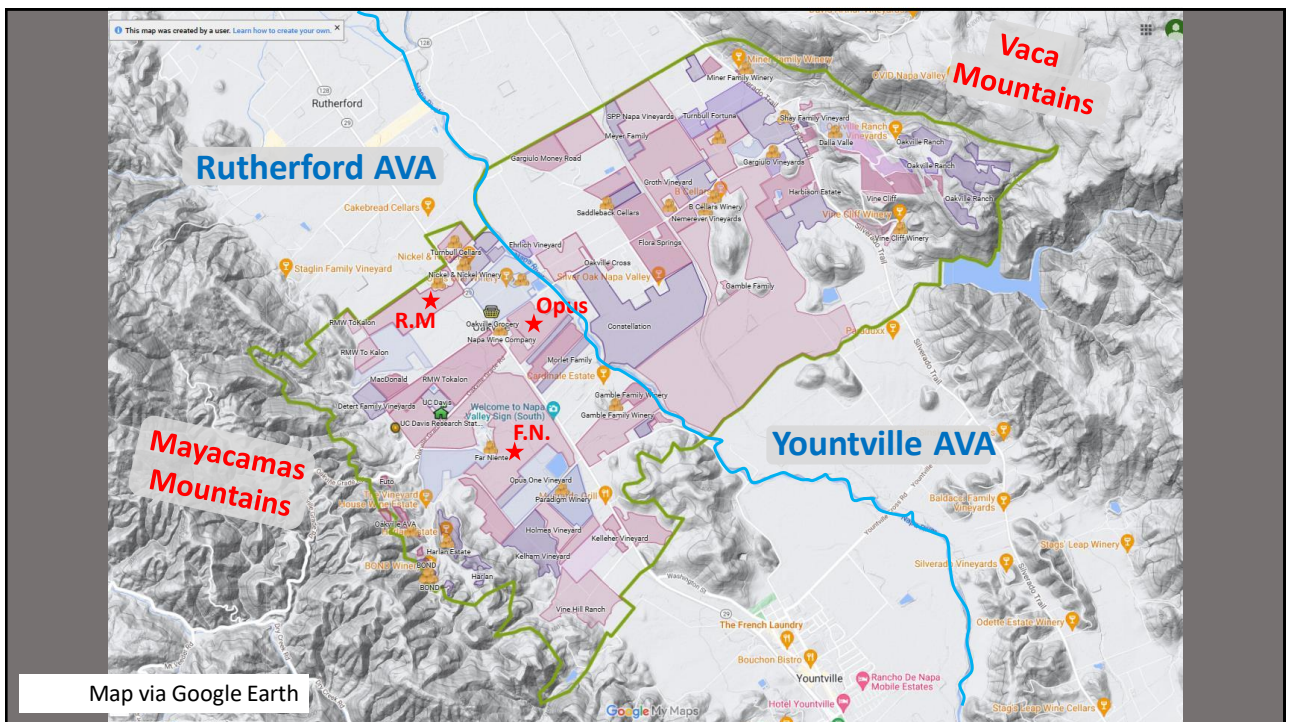
38



10. Which AVA is home to the Robert Mondavi Winery, Opus One, and Far Niente?

- a. Calistoga
- b. Rutherford
- c. Oakville**
- d. Mount Veeder

39



40



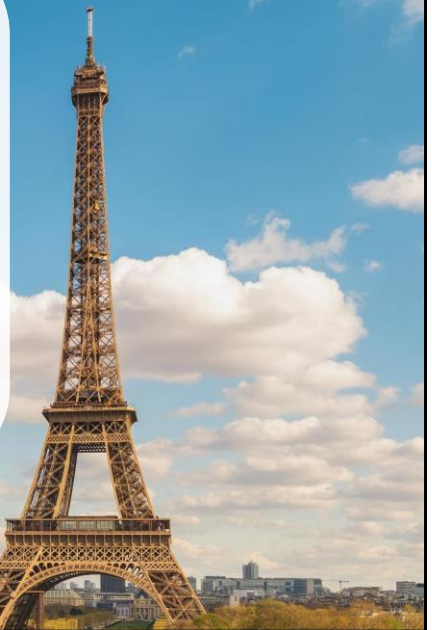
11. Which of the following wineries did **NOT** have a red wine in the Paris Tasting?

- a. Mayacamas Vineyards
- b. Clos du Val
- c. Heitz
- d. Joseph Phelps


41

Paris Tasting—Red Wine Results

1. Stag's Leap Wine Cellars Cab Sauv, 1973
2. Château Mouton-Rothschild 1970
3. Château Haut-Brion 1970
4. Château Montrose 1970
5. Ridge Vineyards Monte Bello Cab Sauv, 1971
6. Château Leoville Las Cases 1971
7. Mayacamas Vineyards Cab Sauv, 1971
8. Clos du Val Winery Cab Sauv, 1972
9. Heitz Wine Cellars Martha's Vineyard Cab Sauv, 1970
10. Freemark Abbey Winery Cab Sauv, 1969



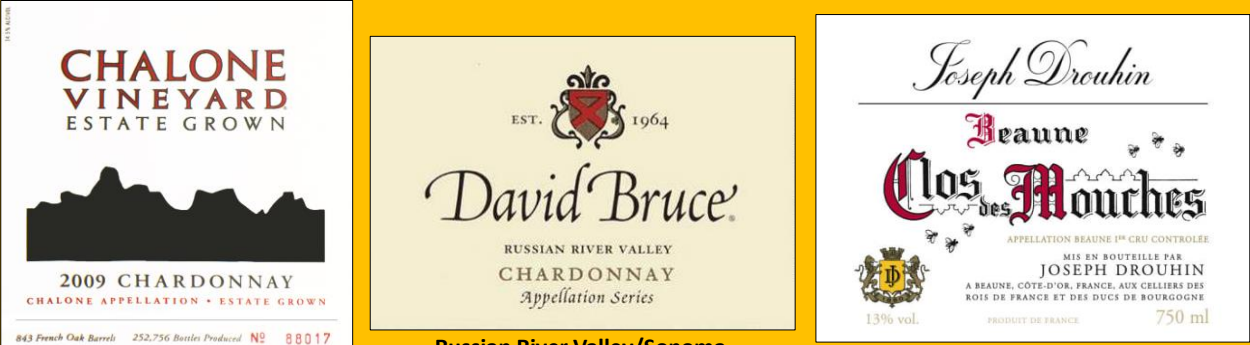
42



12. Which of the following is a Napa Winery that had a white wine in the Paris Tasting?

- a. Chalone Vineyard
- b. Spring Mountain**
- c. David Bruce
- d. Joseph Drouhin

43



**Chalone/Monterey County/
Central Coast**

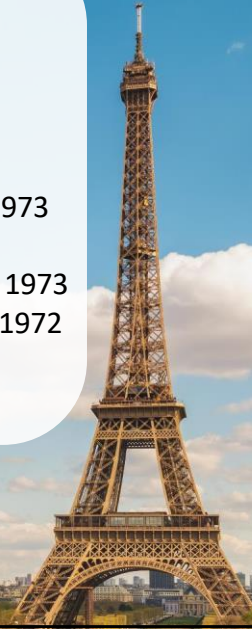
Russian River Valley/Sonoma

FRANCE!

44

Paris Tasting—White Wine Results

1. Chateau Montelena Chardonnay, 1973
2. Domaine Roulot Charmes Meursault 1973
3. Chalone Vineyard Chardonnay, 1974
4. Spring Mountain Vineyard Chardonnay, 1973
5. Joseph Drouhin Beaune-Les Clos des Mouches (1^{er} Cru) 1973
6. Freemark Abbey Winery Chardonnay, 1972
7. Dom. Ramonet-Prudhon Batard-Montrachet (Grand Cru) 1973
8. Dom. Leflaive Puligny-Montrachet Les Pucelles (1er Cru) 1972
9. Veedercrest Vineyards Chardonnay, 1972
10. David Bruce Winery Chardonnay, 1973



45

SCREAMING



EAGLE

13. Who was the first winemaker at Screaming Eagle (1986)?

- a. Heidi Barret
- b. Mike Grgich
- c. Robert Foley
- d. Helen Turley

46

Heidi Peterson Barret



- 1980: BS in Fermentation Science, UC Davis
- 1983: Buehler Vineyards (Winemaker)
- 1992: Winemaker for Screaming Eagle (100 Parker Points)
- 1994: Founded her own brand, La Sirena
- 2008: Founded Barrett & Barrett (with husband Bo Barrett)

47



14. NVV estimates that Napa County accounts for _____ of California's wine grape harvest.

- a. 4%
- b. 12%
- c. 20%
- d. 40%

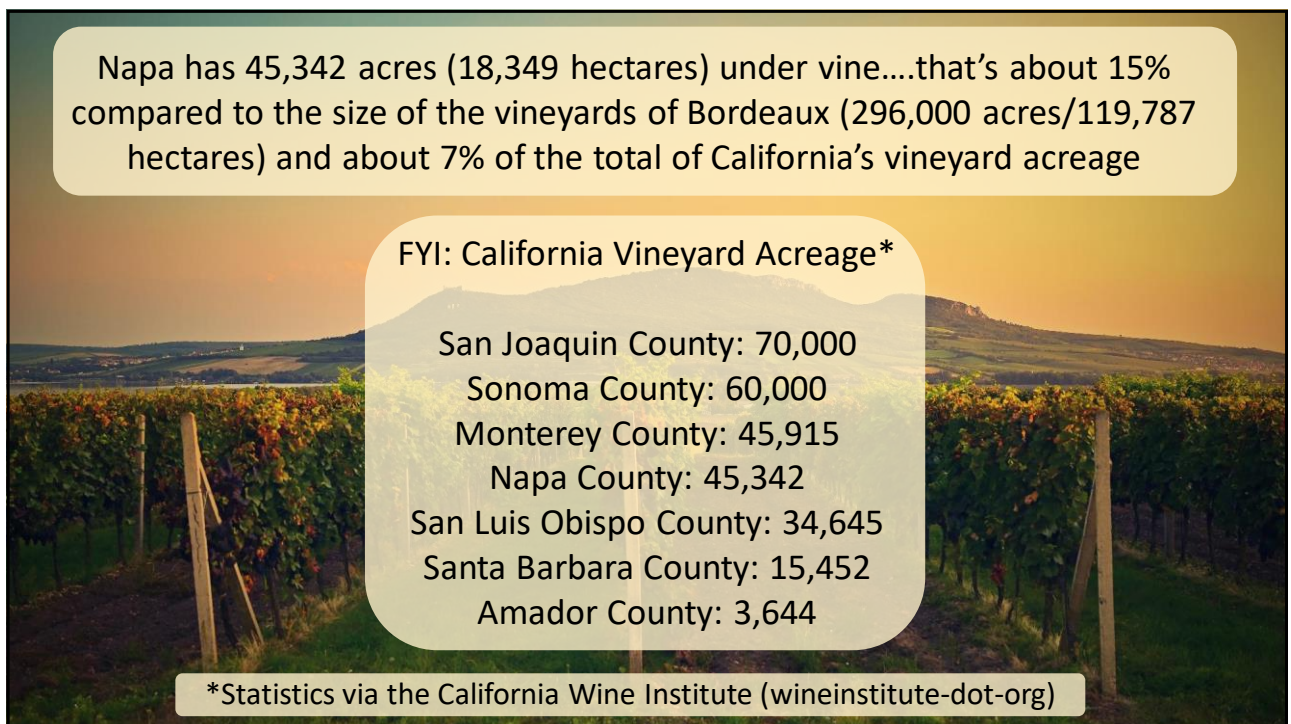
48



Napa's wine production is small...
yield and production are kept low; quality is kept high...

Despite the small quantity...due to the consistently high prices of Napa Valley wines, they typically account for over 25% of the state's total wine revenues.

49



Napa has 45,342 acres (18,349 hectares) under vine...that's about 15% compared to the size of the vineyards of Bordeaux (296,000 acres/119,787 hectares) and about 7% of the total of California's vineyard acreage

FYI: California Vineyard Acreage*

San Joaquin County:	70,000
Sonoma County:	60,000
Monterey County:	45,915
Napa County:	45,342
San Luis Obispo County:	34,645
Santa Barbara County:	15,452
Amador County:	3,644

*Statistics via the California Wine Institute (wineinstitute-dot-org)

50

Napa's Benchmark Properties Include:

Beaulieu Vineyards
 Beringer Vineyards
 Chappellet Winery
 Charles Krug Winery
 Chateau Montelena
 Diamond Creek Winery
 Domaine Chandon
 Dominus
 Grgich Hills Estate

Harlan Estate
 Heitz Wine Cellar
 Inglenook
 Louis M. Martini Winery
 Opus One
 Robert Mondavi Winery
 Rubicon Estate
 Schramsberg
 Screaming Eagle
 Stags Leap Wine Cellars
 Sterling Vineyards

51

References/for more information:

Napa Valley—History, general information, statistics:

- <https://napavintners.com/>
- https://capstonecalifornia.com/study-guides/regions/north_coast/napa_valley

Inglenook:

- <https://www.inglenook.com/story/history>

The Judgement of Paris/1976 Tasting:

- <https://www.ridgewine.com/about/explore/judgment-of-paris/>
- https://en.wikipedia.org/wiki/Judgment_of_Paris_%28wine%29

Oakville:

- https://napavintners.com/napa_valley/oakville-ava/

Howell Mountain:

- https://napavintners.com/napa_valley/howell-mountain-ava/

Lake Hennessey:

- https://en.wikipedia.org/wiki/Lake_Hennessey

H.W. Crabb and To Kalon:

- https://en.wikipedia.org/wiki/Henry_Walker_Crabb

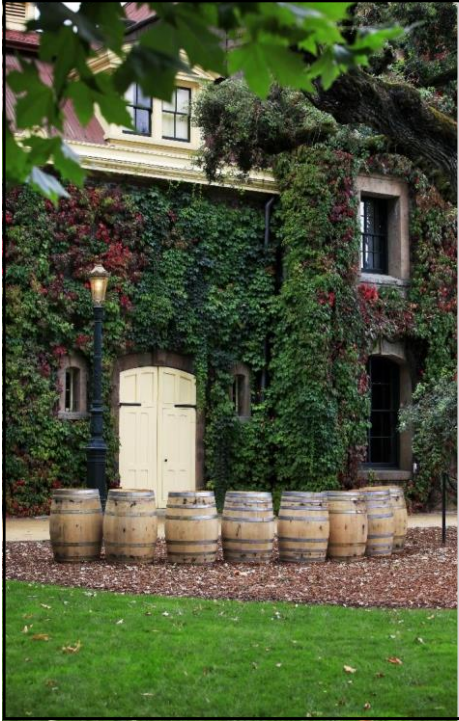
Mount Saint Helena:

- <https://www.summitpost.org/mount-saint-helena/150521>

Heidi Barret and La Sirena:

- <https://www.lasirenawine.com/>

52



*Thank you
for joining
us!*