

*So...you
think you
know
Bubbly?*

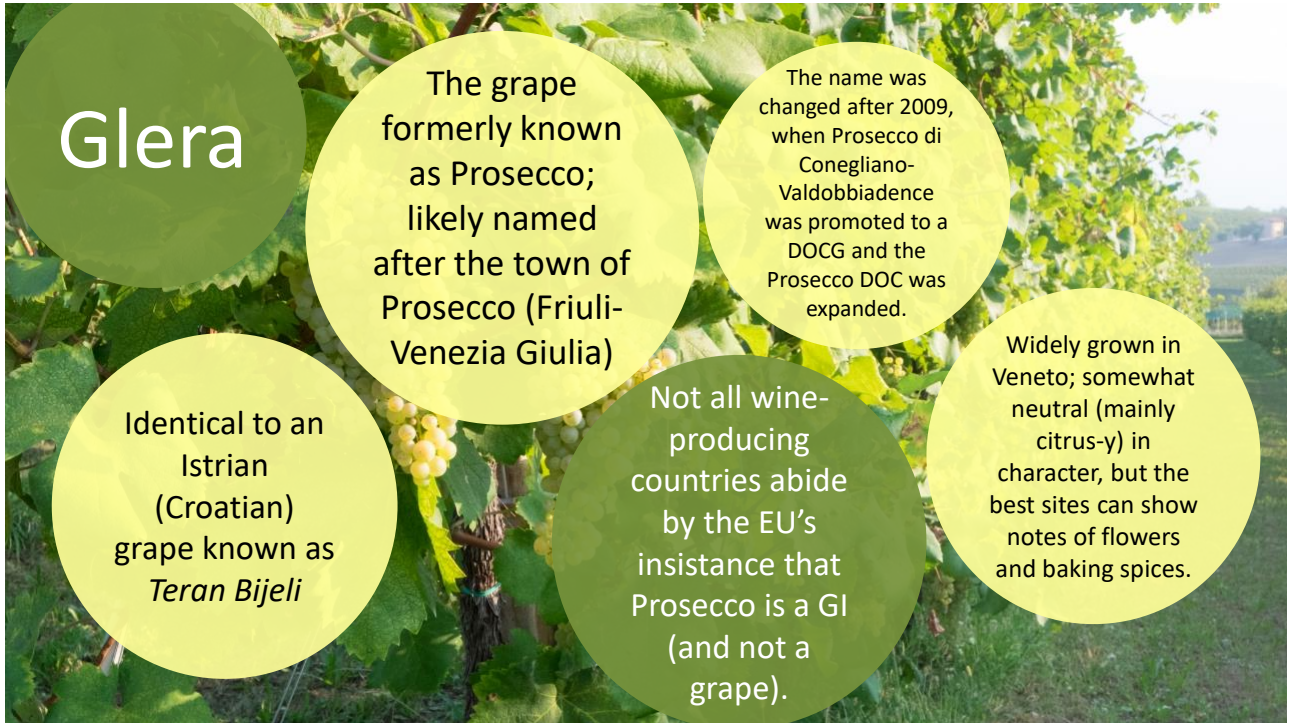
1



Sample Question:
What is the main
grape variety of
Prosecco?

- a. Pinot Blanc
- b. Pinot Noir
- c. Chardonnay
- d. Glera**

2



3

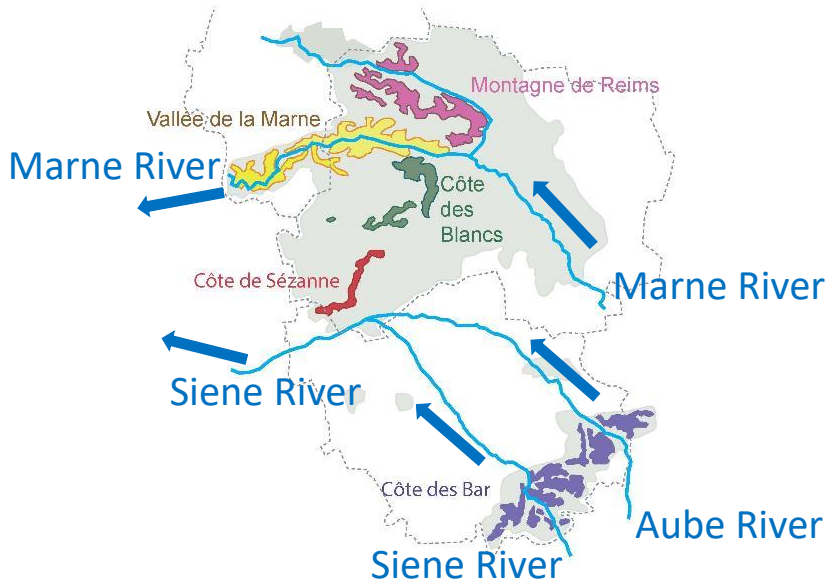


1. Which of the following rivers flows through the Champagne District?

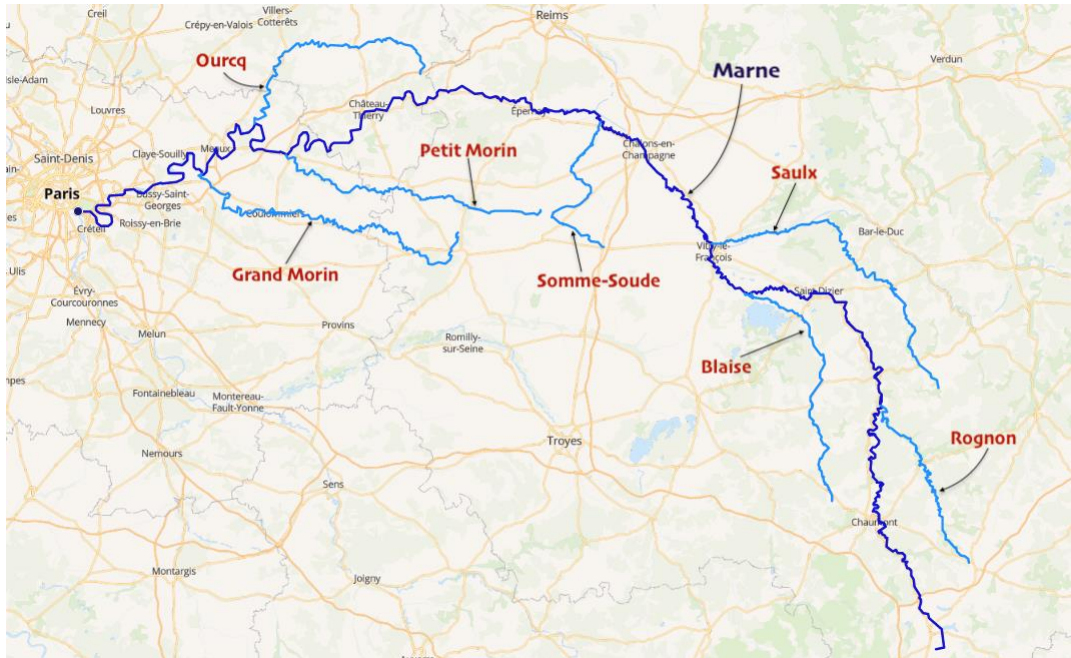
- a. Yonne
- b. Marne**
- c. Charente
- d. Serein

4

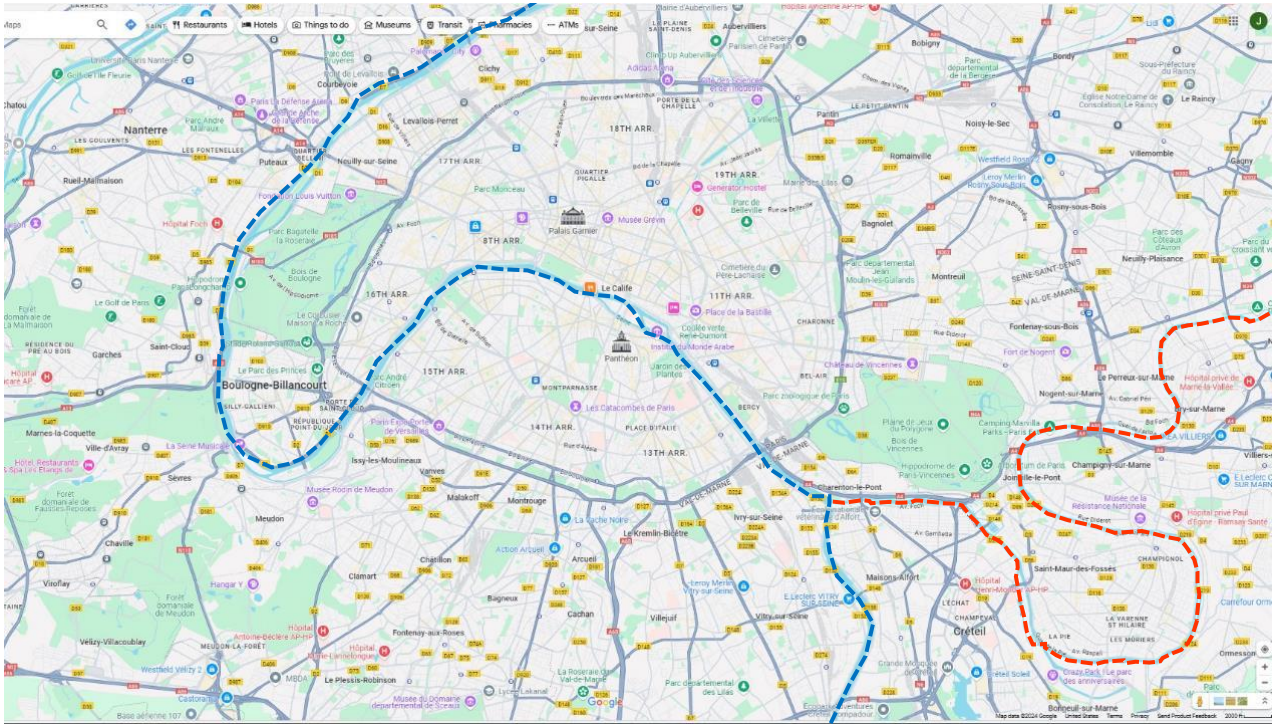
The Champagne Region



5



6



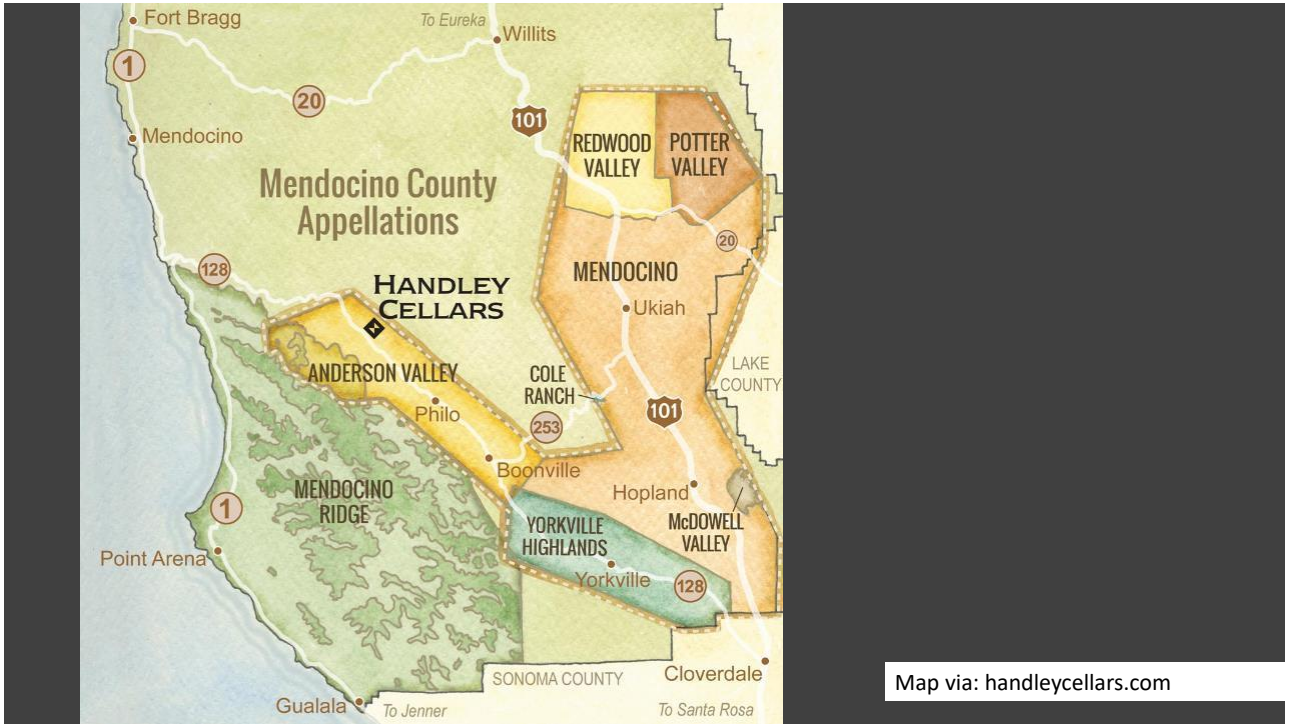
7



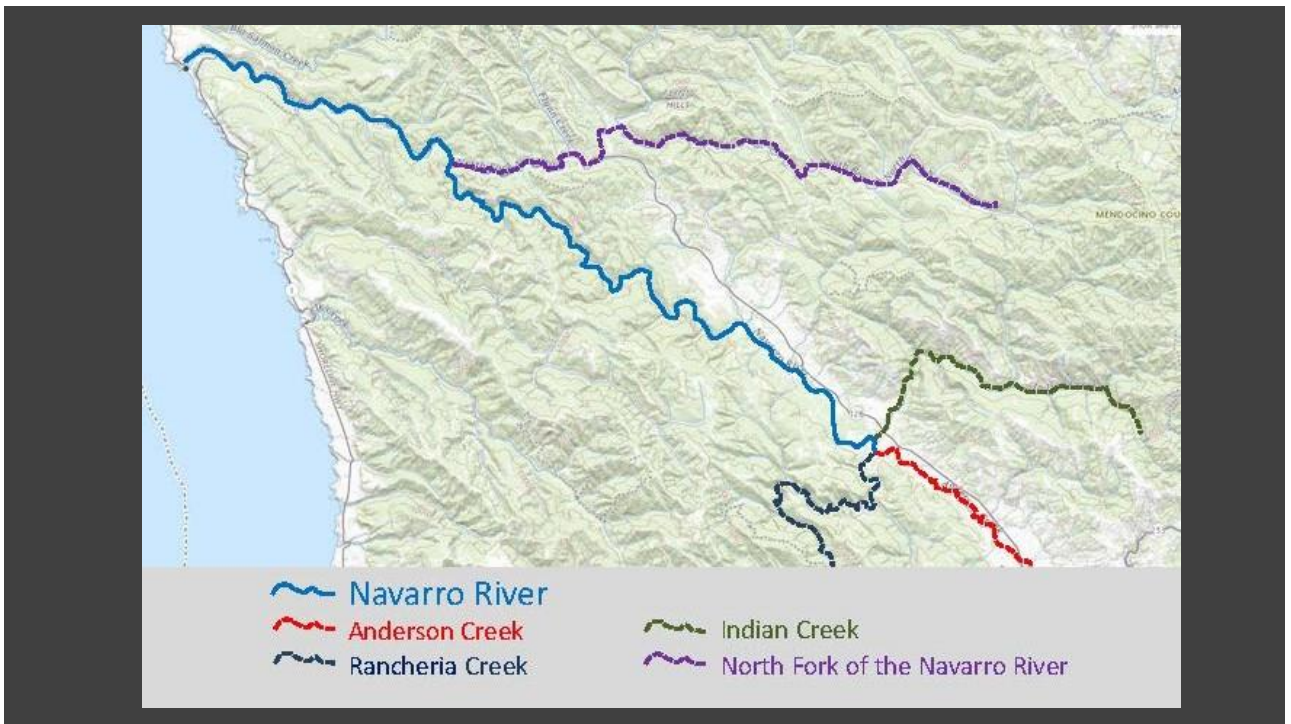
2. What Mendocino AVA is particularly well-known for sparkling wine?

- a. Anderson Valley AVA
- b. Yorkville Highlands AVA
- c. Mendocino Ridge AVA
- d. Cole Ranch AVA

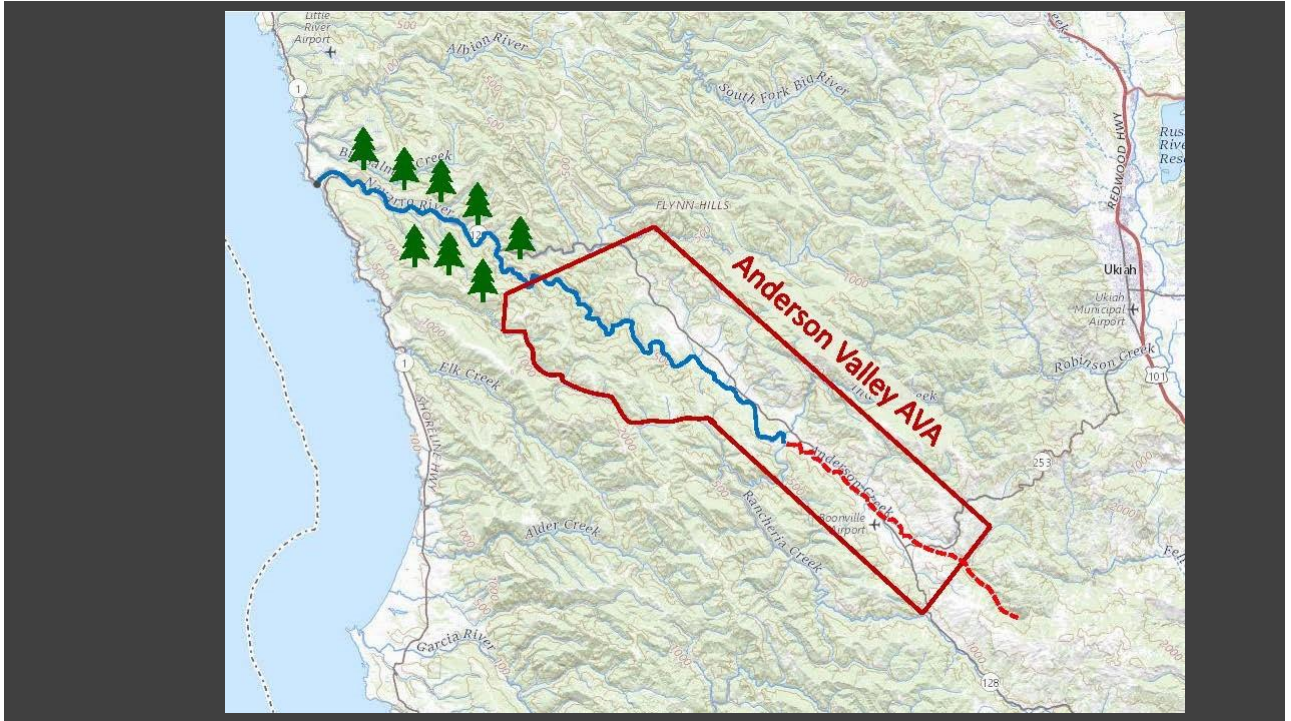
8



9



10



11

Anderson Valley AVA

Stretches for just over 15 miles/24 km along a narrow valley formed by Anderson Creek and the Navarro River

Cool climate: the western edge is just 10 miles from the Pacific Ocean

2,457 acres/994 ha under vine

69% Pinot Noir, 21% Chardonnay

12



3. Which of the following grapes is allowed to be used in Franciacorta DOCG?

- a. Erbamato
- b. Pinot Grigio
- c. Glera
- d. Trebbiano

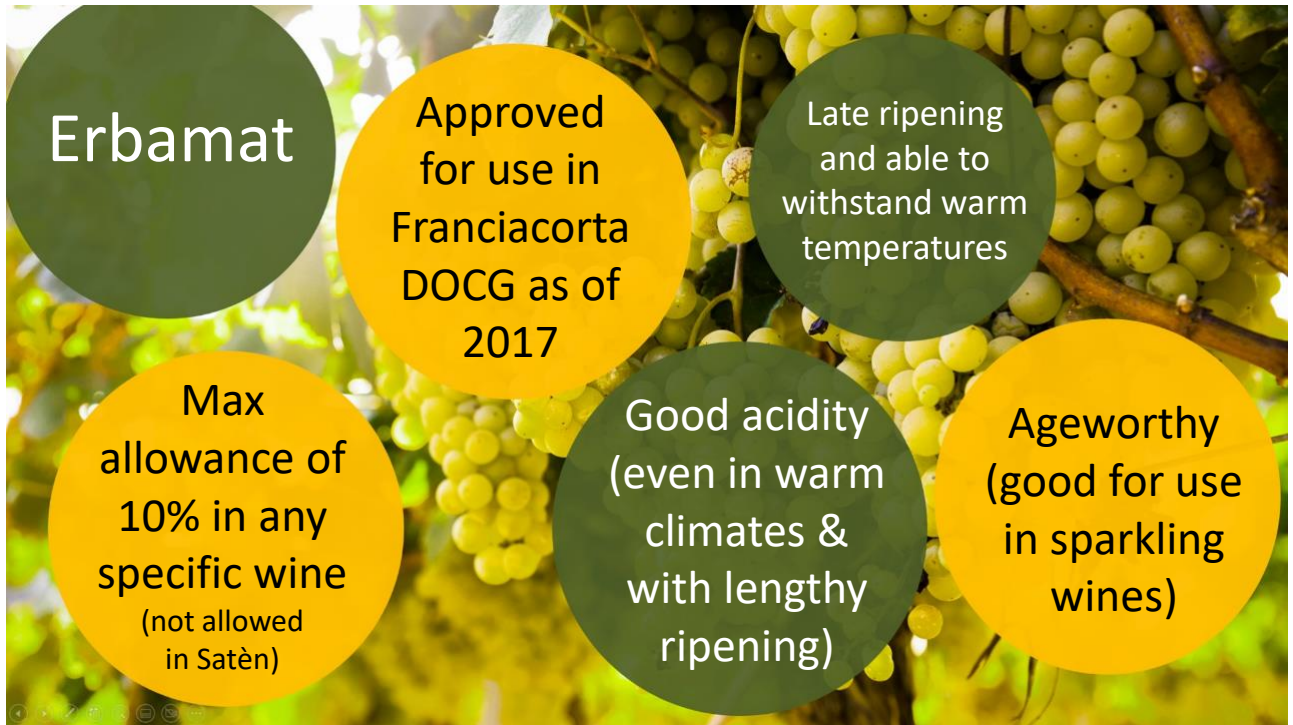
13



Franciacorta DOCG
Metodo classico
sparkling wine
Product of Lombardy

Grape varieties:
Chardonnay
Pinot Nero
Pinot Bianco (max. 50%)
Erbamat (max. 10%)

14



15



4. Altos de Pinto Bandeira is a sparkling wine-only appellation of _____.

- a. Brazil
- b. Portugal
- c. Spain
- d. Chile

16



17

ALTOS DE PINTO BANDEIRA

ABOUT WINERIES CHARACTERISTICS VISIT FREQUENTLY ASKED QUESTIONS CONTACT

The first exclusive Denominación de Origen (DO) of sparkling wines from the new world!

The terroir's characteristics combined with the region's natural entrepreneurial vocation bring you Altos de Pinto Bandeira, the first Denomination of Origin (D.O.) exclusive to sparkling wines from the New World. Such an achievement is the result of a 10-year process developing the Association of Wine Producers of Pinto Bandeira (Asprovinho), in meticulous work for proofs and adaptations to strict control rules at Aurora, Don Giovanni, Família Geisse and Valmarino wineries which are the four wine cellars licensed to use the D.O.

Sparkling wines from Altos de Pinto Bandeira are synonyms of excellence and versatility due to the certified grape's quality and origin, and all the steps that the wine go through from vineyard to the glass. They are notably elegant and deliver good body structure (allowing longer aging periods) and preserve excellent freshness & exceptional balance making them very gastronomic too.

D.O.
ALTOS DE PINTO BANDEIRA

<https://www.altosdepintobandeira.com.br/i>

18

Altos de Pinto Bandeira DO

Approved grape varieties: Chardonnay, Pinot Noir and Riesling Italico (Welschriesling)

Must be produced using the traditional method (second fermentation in the bottle) with (min) 12 months lees aging

Plantings are allowed in the rolling hills at elevations between 520 m/1,700 ft & 770 m/2,525 feet

Non-sparkling wines from the same area = Pinto Bandeira IP

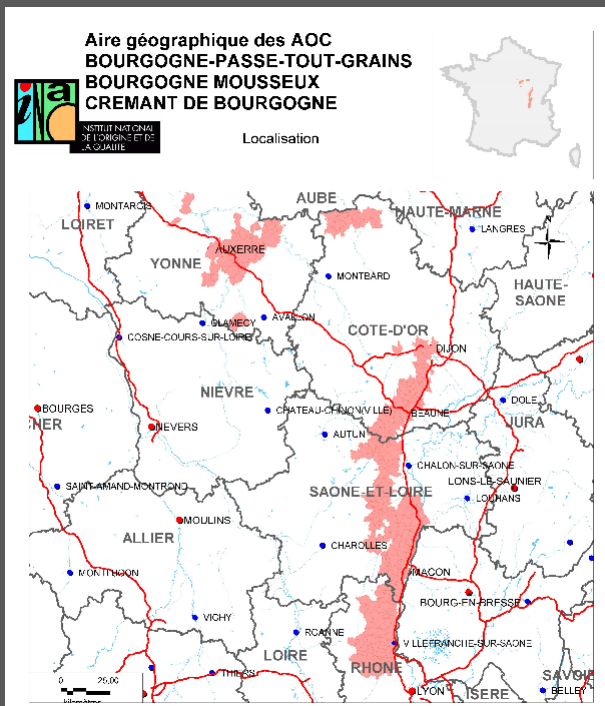
19



5. Which of the following AOCs is approved for sparkling wine produced in Burgundy (Bourgogne)?

- a. Coteaux Bourguignons AOC
- b. Crémant de Bourgogne AOC
- c. Bourgogne Mousseux AOC
- d. Both b and c

20



21

Bourgogne Mousseux AOC

Approved for traditional method, red sparkling wine—
Vin Mousseux Rouge—only!

Principal varieties: Pinot Noir and Gamay
(plus César, if grown in Yonne Département)

Accessory varieties (max 49%) include Chardonnay, Aligoté,
Gamay de Bouze, Gamay de Chaudenay, Melon,
Pinot Blanc, & Pinot Gris

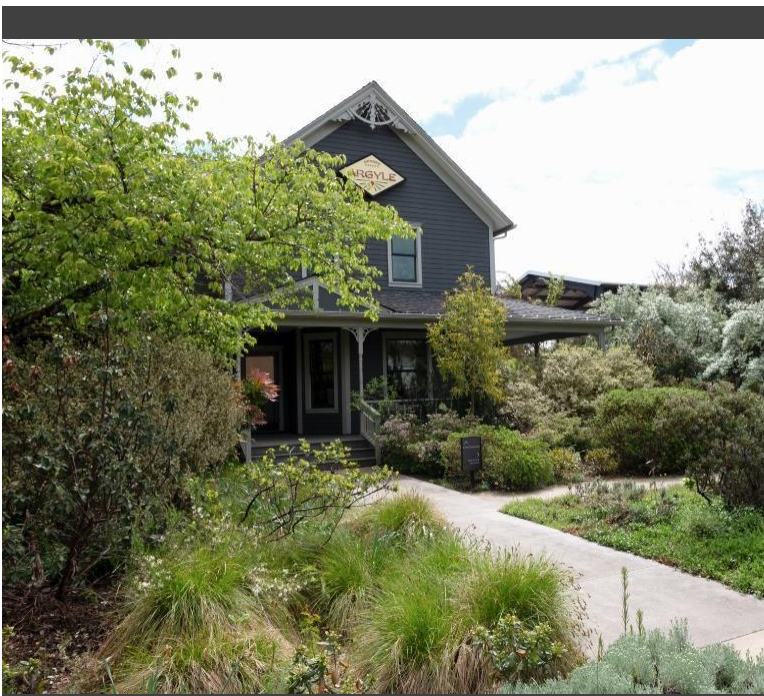
22



6. Where is Argyle Winery located?

- a. Napa
- b. Sonoma
- c. Oregon
- d. New York

23



Founded in 1987 in Dundee, Argyle Winery bills itself as “Oregon’s Original Sparkling Wine House.” These days, however, they are also known for still wines—including the “Nuthouse” and “Spirit House” brands.

Photo via: argylewinery.com

24

Argyle produces an impressive range of sparkling wines, including:

- Vintage Brut sparklers produced from Pinot Noir, Chardonnay, and Meunier
- Limited release (75 cases), single-vineyard, extended tirage sparklers aged 10 years or more on the lees
- Blanc de Blancs
- Rosé!



Photos via: argylewinery.com

25



7. What is the leading region for the production of Cava DO?

- Valencia
- Ebro Valley
- Penedès
- Extremadura

26

The four main areas
of the Cava DO:

Comtats de Barcelona
(Penedès, Catalonia)

Ebro Valley/
Valle de Ebro

Viñedos de
Almendralejo
(Extremadura)

Requena (Valencia)

www.cava.wine/en/origin-cava/4-zones/

27

Four Main Areas of the Cava DO:

Comtats de Barcelona: produces more than 95% of all Cava, home to the first Cava ever produced (1872)

Ebro Valley: contains the northernmost vineyards of the DO, located along both sides of the Ebro River

Viñedos de Almendralejo: located in the southwestern reaches of the DO (in a flat, dry valley)

Requena: located in the interior of the province of Valencia between the *Río Cabriel* and the *Sierras Ibéricas del Molón*

28

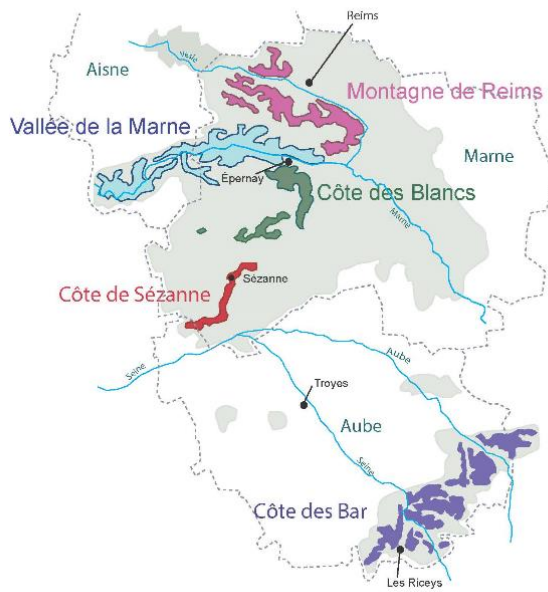


8. Which of the following towns is located the furthest NORTH?

- a. Éperney
- b. Les Riceys
- c. Sézanne
- d. Reims**

29

The Champagne Region



Copyright: The Society of Wine Educators 2023

30



31



9. Which of the following is a sparkling wine-only appellation?

- a. Prosecco DOC
- b. Alta Langa DOCG**
- c. Freisa d'Asti DOC
- d. Oltrepò Pavese DOC

32

ALTA LANGA DOCG



ZONA DI PRODUZIONE



<https://www.altalangadocg.com>

33



<https://www.altalangadocg.com>

34

Alta Langa DOCG

Produces sparkling wine (spumante) in white and rosato

Min. 90% Pinot Noir and/or Chardonnay

Must be traditional method and vintage-dated

Minimum 30 months lees aging required
For *reserva*: minimum 36 months lees aging required

Vines planted at a min. elevation of 250 meters/820 feet

35



10. What Sonoma-based winery produces “Wedding Cuvée” Sparkling Wine?

- a. Domaine Carneros
- b. Iron Horse Vineyards**
- c. Artesa
- d. Patz & Hall

36



Founded in 1976 and located in Sebastopol, CA (within the Green Valley of Russian River Valley AVA), Iron Horse Vineyards is well-known for its “outdoor tasting room with a view.”

Photo via: www.ironhorsevineyards.com

37

Iron Horse Wedding Cuvée is a vintage-dated, traditional method *blanc de noirs* first released in 1983 and crafted specifically for weddings.

Photo via: www.ironhorsevineyards.com



38



11. How long must *Cava de Guarda DO* be aged on the lees?

- a. 9 months
- b. 12 months
- c. 30 months
- d. 36 months

39

Cava de Guarda

New tier of high-quality Cava approved in 2021

Must be traceable from vineyard to bottle

Vines must be at least ten years of age

Vines must be farmed organically (ten-year grace period)

Must be vintage dated

40

Minimum Lees Aging



Cava/Cava de Guarda:
Min 9 months



Cava/Cava de Guarda Reserva:
Min 18 months

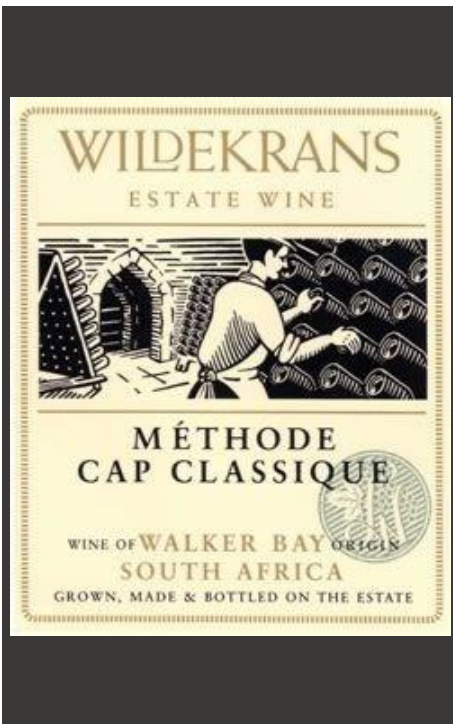


Cava/Cava de Guarda Gran Reserva:
Min 30 months



Cava de Paraje Calificado:
Min 36 months
Sourced from a recognized single vineyard

41



12. What area produces a sparkling wine known as MCC?

- a. Alsace
- b. Australia
- c. New Zealand
- d. South Africa

42

Méthode Cap Classique

Term used for South African wines made using the traditional method, with the following standards:

As of 2023, all grapes must be whole-bunch pressed

Min. 12 months lees aging (raised from 9 months in 2023)

Cap Classique with Extended Lees Aging must have min. 36 months lees aging and must be produced using Chardonnay, Pinot Noir and/or Pinot Meunier.

43



13. What estate produces “Cuvée Winston Churchill” Champagne?

- a. Pol Roger
- b. Veuve Clicquot
- c. Charles Heidsieck
- d. Tattinger

44



Pol Roger Cuvée Sir Winston Churchill:
first released in 1975

"My tastes are simple, I am easily
satisfied with the best."

Declared the Pol Roger Estate to be "the
most drinkable address in the world."

Only made in the best vintages; released later than the other vintage
dated Champagnes from Pol Roger—marking Churchill's appreciation
for older wines.

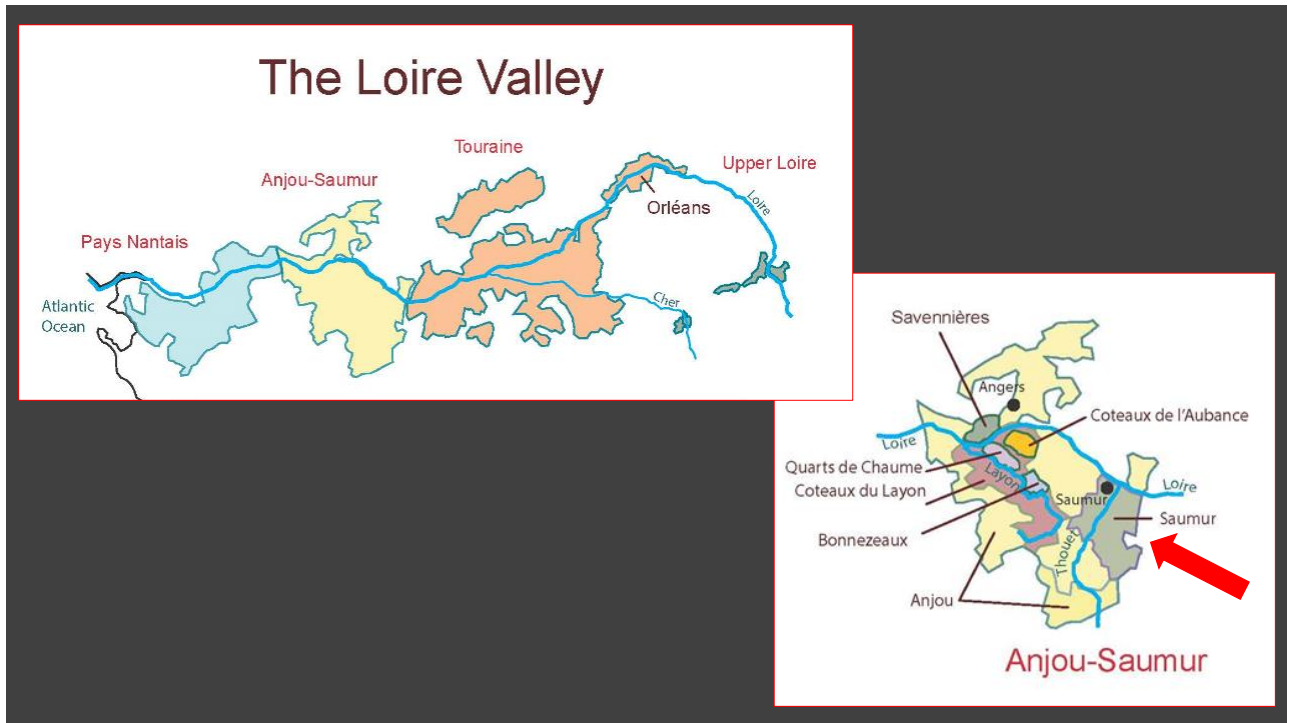
45



14. Saumur is a leading
region for sparkling wines of
_____.

- a. The Loire Valley
- b. Alsace
- c. Lombardy
- d. Veneto

46



47



15. What is the leading red grape variety of Champagne?

- a. Petite Verdot
- b. Meunier
- c. Pinot Noir**
- d. Cabernet Franc

48

Total Vineyard Area in Champagne:
34,200 Hectares/84,510 acres



38% Pinot Noir



31% Chardonnay



31% Meunier

Trace amounts: Pinot Gris, Pinot Blanc Arbane, Petit Meslier, Voltis

*According to the Comité Champagne, 2024: <https://www.champagne.fr/en>

49



Thank you for
joining us!

How did you do?

50