



What's New(s) in the Wine World?

January 2025

1

Beverly, Washington AVA
Crystal Springs of Napa Valley AVA
Terre d'Abruzzo IGT
IGP Lorraine
Alsace Grand Cru Vorbourg (Red Wines)
Campo de Calatrava DO

2



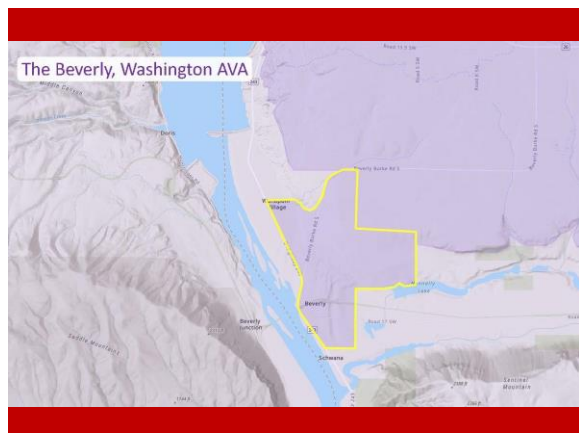
Beverly, Washington AVA

3



A new AVA approved in October of 2024

4



5

Beverly, Washington AVA

Low, gently rolling hills (515 to 950 feet asl); generally south-/southwest-facing

Soils—derived from the Missoula Floods—are mainly sand and gravel atop basalt bedrock

These soils retain heat efficiently and are quite coarse and well-drained (as compared to the finer, more prone-to-erosion soils in adjacent regions)

6

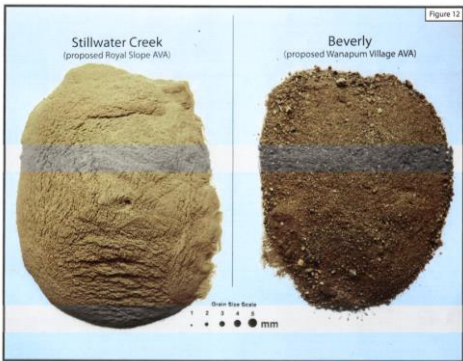


Photo via the original petition for the Beverly, Washington (Wanapum Village AVA), as submitted by Kevin Pogue (November 2022)

7

Beverly, Washington AVA

wines and vines

Covers a total of 2,415 acres; of these—about 550 acres are planted to vines

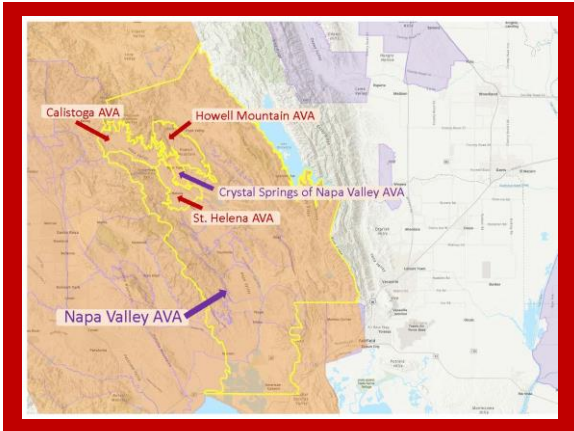
Contains two commercial vineyards

Leading grapes include Merlot (50%) and Cabernet Sauvignon (30%) as well as Syrah, Malbec, Cabernet Franc, and Mourvèdre

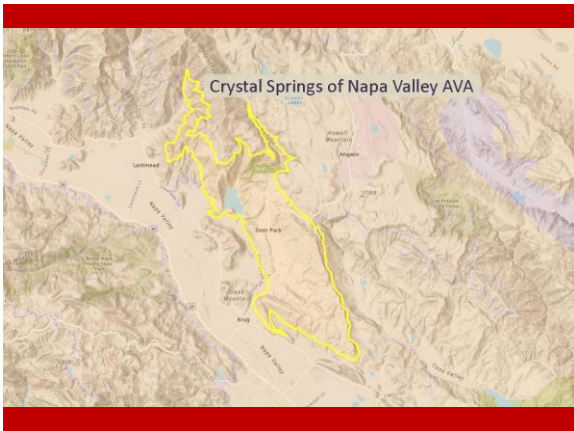
8



9



10



11

Crystal Springs of Napa Valley AVA

“All hillside” on the western face of the Vaca Mountains

400 to 1,400 feet asl

Abundant sunshine, low frost risk, long growing season

Thin topsoil, volcanic bedrock

12

Crystal Springs of Napa Valley AVA

wines and vines

Covers a total of 4,000 acres; of these—about 230 acres are planted to vines

Home to approximately 30 commercial vineyards

Leading grape varieties include Cabernet Sauvignon, Merlot, Cabernet Franc, and Sauvignon Blanc

13



14



15



16



17

Terre d'Abruzzo IGT

Allows for red (rosso), white (bianco), and rosé (rosato) in still (non-sparkling), frizzante (slightly sparkling), and passito (dried grape)

34 grape varieties are allowed:

These include several obscure, local varieties such as Mostosa, Passerina, and Pecorino; better-known Italian grapes such as Garganega, Moscato, Sangiovese, Pinot Grigio, & Primitivo and International varieties—such as Merlot, Cabernet Sauvignon, Chardonnay, & Pinot Noir

18

Terre d'Abruzzo IGT

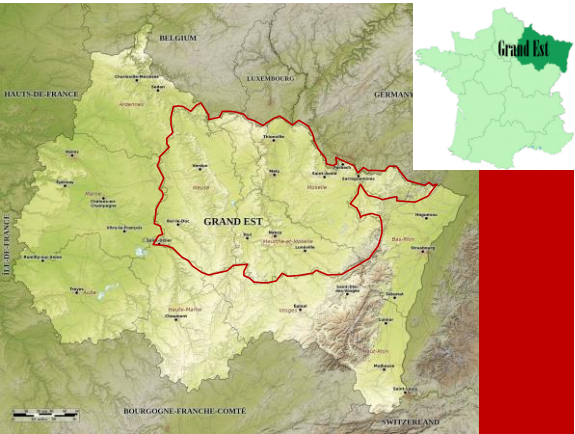
There are currently 8 other IGTs in Abruzzo, but the Terre d'Abruzzo is meant to replace all of them.



19



20



21

IGP Lorraine

Covers the French departments of Meurthe-et-Moselle, Meuse, and Moselle (in the Grand Est administrative region)

Cool-climate area defined by the foothills of the Vosges Mountains & a series of river valleys (Meuse, Ornain, Aisne, Moselle)

22



23

IGP Lorraine

wines and vines

Approved for sparkling wines—*Lorraine Mousseux de Qualité*—in white (blanc), red (rouge), and rosé

A total of 17 allowed grape varieties:

White: Chardonnay, Pinot Blanc, Riesling, Aubin, Auxerrois, Müller-Thurgau, Johanniter, Muscaris, Solaris

(max. 30% Riesling)

Red: Pinot Noir, Gamay, Meunier, Cabernet Cortis, Gamaret, Pinotin

Gris: Pinot Gris, Sauvignier Gris

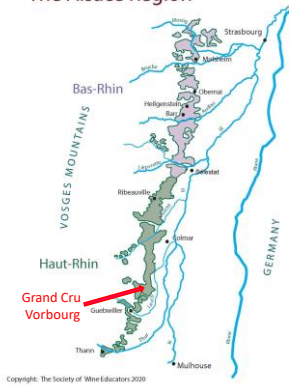
24

Alsace Grand Cru Vorbourg (Red Wines)



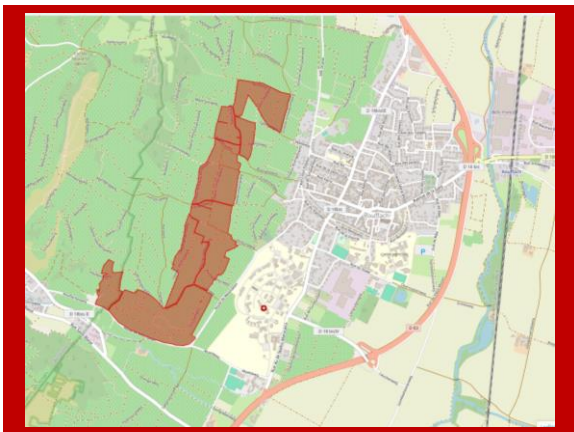
25

The Alsace Region



Copyright: The Society of Wine Educators 2020

26



27

Alsace Grand Cru Vorbourg

One of the southernmost of the Alsace Grands Crus

Planted to 53% Gewurztraminer

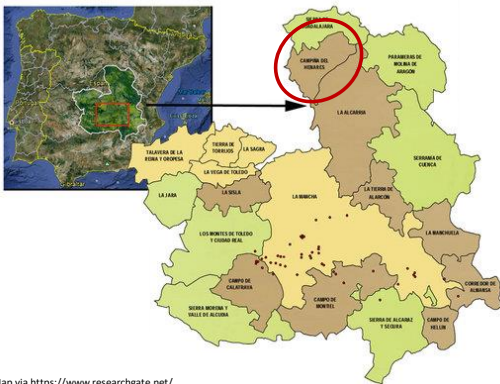
Approved for Grand Cru Red Wines (Pinot Noir) in 2024

28

Campo de Calatrava DO



29



Map via <https://www.researchgate.net/>

30

Campo de Calatrava DO

Located within Castilla-La Mancha, atop the Campo de Calatrava Volcanic Field

Within the Vino de la Tierra-La Mancha (IGP)

31



32



33

Campo de Calatrava DO

wines and vines

Allows for a long list of wines styles to be produced.

These include dry white, red, and rosé wines, quality sparkling wine, and sweet (late harvest) wines.

34



35



36



37



38



39

The Beverly, Washington AVA is located just to the south of the _____ AVA.



40

What are the two leading grape varieties of the Beverly, Washington AVA?



41

What new Napa AVA is tucked between the Howell Mountain, St. Helena and Calistoga AVAs?



42

The Crystal Springs of Napa Valley AVA is tucked into the western face of the _____.



43

The newest IGT in Italy covers the entirety of the _____ province.



44

The includes/covers _____ other IGTs in Abruzzo



45

The IGP Lorraine is approved for _____ wine only.

Blank orange box for answer.

Seven horizontal lines for writing.



46

What is the unique geological feature of the Campo de Calatrava DO?

Blank orange box for answer.

Seven horizontal lines for writing.



47

In 2024, the _____ Alsace Grand Cru was approved for the production of red wines.

Blank orange box for answer.

Seven horizontal lines for writing.



48

**Thank you
for
joining us!**



49
